

PARK AVENUE WEST 80' R/W



BEARINGS ARE BASED ON AN ASSUMED MERIDIAN AND ARE INTENDED TO BE USED FOR ANGULAR DETERMINATION ONLY.

"The grantor, grantee and all subsequent owners or assignees taking title from, under or through the grantor or grantee agrees that any use or improvement made on this land shall be in conformity with all existing valid zoning, platting, health, or other laws, rules and regulations."

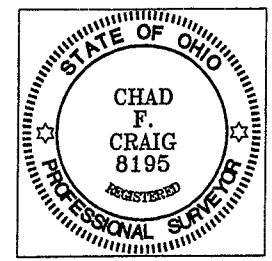
NEW SPLIT
RICHLAND COUNTY
TAX MAP OFFICE
MIB 8-18-06
INITIAL DATE

NEW SURVEY
OF EXISTING PARCEL
RICHLAND COUNTY
TAX MAP OFFICE
MIB 8-18-06
INITIAL DATE

Chad F. Craig

SURVEY BY: CHAD F. CRAIG PS. #8195
for SEILER & CRAIG SURVEYING
52-1/2 NORTH MAIN STREET
MANSFIELD, OHIO 44902
(419) 525-3644
FAX (419) 525-3696

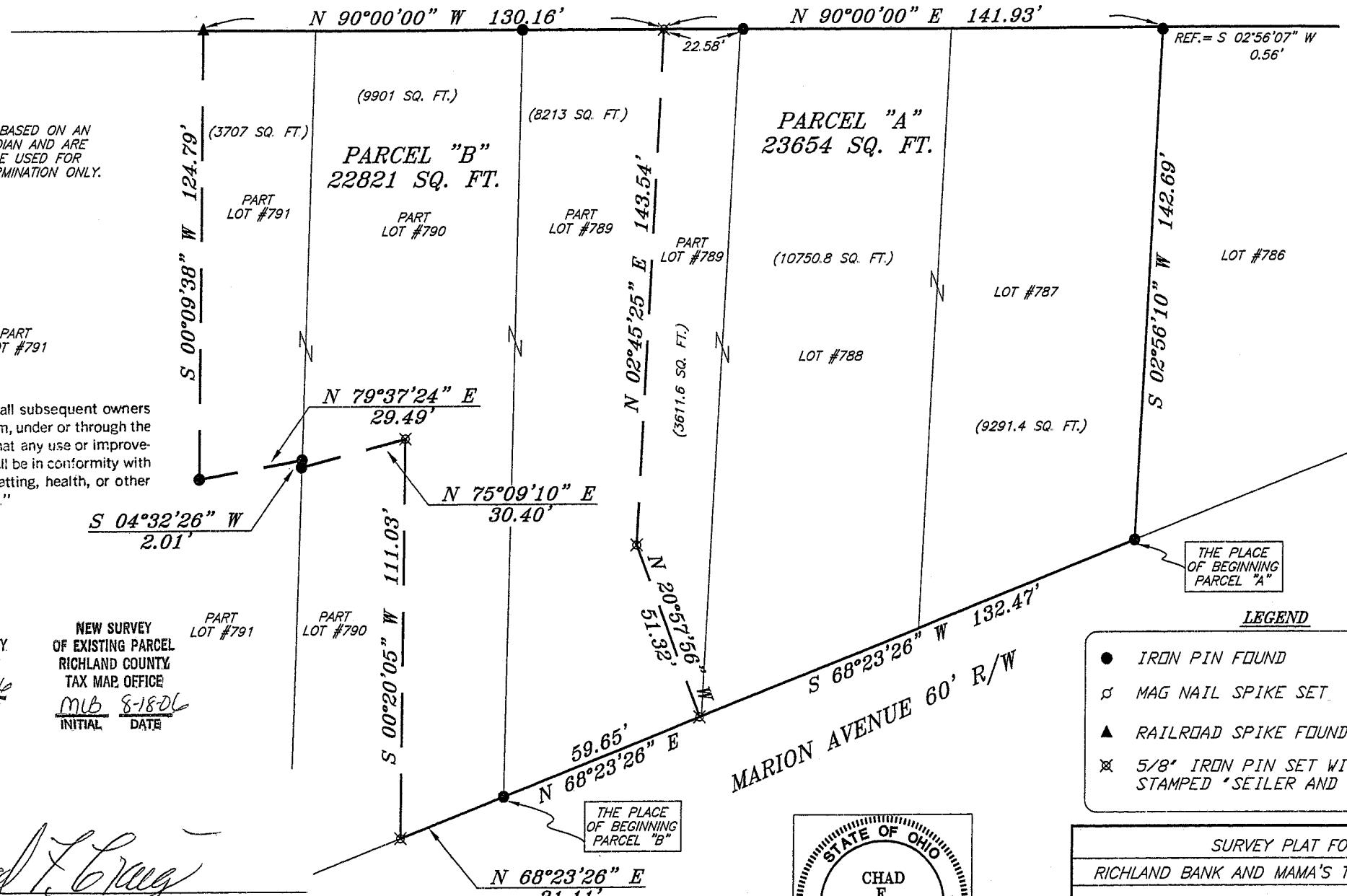
APPROVED BY THE MANSFIELD CITY PLANNING COMMISSION;
NO PLAT REQUIRED.
SIGNED: *[Signature]*
SECRETARY, CITY PLANNING COMMISSION;
DATE: 8/19/06



LEGEND

- IRON PIN FOUND
- ⊕ MAG NAIL SPIKE SET
- ▲ RAILROAD SPIKE FOUND
- ⊗ 5/8" IRON PIN SET WITH CAP STAMPED "SEILER AND CRAIG, INC."

| | |
|---|---------------|
| SURVEY PLAT FOR | |
| RICHLAND BANK AND MAMA'S TOUCH OF ITALY | |
| LOT # 787, 788, 789, AND PT. LOT #790 & 791 | |
| CITY OF MANSFIELD | |
| RICHLAND COUNTY, OHIO | |
| DATE: AUGUST 4, 2006 | SCALE: 1"=30' |
| RICHBANKBNDRY.DWG | |



X-79

SEILER & CRAIG SURVEYING, INC.

Douglas C. Seiler, PS & Chad F. Craig, PS
52 1/2 North Main Street
Mansfield, Ohio 44902
419-525-3644 Fax 419-525-3696
www.seilerandcraig.com

**SURVEY DESCRIPTION
PARCEL "A"**

LOT #787, LOT #788
and PART OF LOT #789
CITY OF MANSFIELD, OHIO

Situated in the City of Mansfield, County of Richland, State of Ohio and being known as Lot #787, Lot #788 and a part of Lot #789 of the consecutively numbered lots in said city, the entire tract being more particularly described as follows:

Beginning for the same at an iron pin found and accepted as marking the southeast corner of Lot #787; Thence, South 68 degrees 23 minutes 26 seconds West with the south line of said lot and the westerly prolongation thereof, a distance of 132.47 feet to an iron pin set;

Thence, North 20 degrees 57 minutes 56 seconds West a distance of 51.32 feet to an iron pin set;

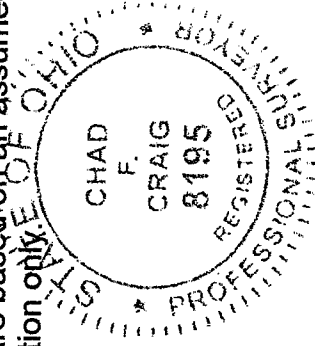
Thence, North 02 degrees 45 minutes 25 seconds East a distance of 143.54 to an iron pin set on the north line of Lot #789;

Thence, North 90 degrees 00 minutes 00 seconds East and the easterly prolongation thereof, passing through an iron pin found for reference at 22.58 feet, a total distance of 141.93 feet to the northeast corner of Lot #787, said corner referenced by an iron pin found on a bearing of South 02 degrees 56 minutes 07 seconds West and at a distance of 0.56 feet;

Thence, South 02 degrees 56 minutes 10 seconds West with the east line of said lot, a distance of 142.69 feet to the place of beginning containing a total of 23654 square feet, of which 9291 square feet are located within said Lot #787, 10751 square feet are located within Lot #788 and 3612 square feet are located within part of said Lot #789, according to survey by Chad F. Craig, Professional Surveyor #8195 on August 4, 2006.

Iron pins set are 5/8" rods with caps stamped "SEILER AND CRAIG INC".

Bearings are based on an assumed meridian and are intended to be used for angular determination only.



NEW SPLIT
RICHLAND COUNTY
TAX MAP OFFICE

MFB 81804
INITIAL DATE

Chad F. Craig

APPROVED BY THE MANSFIELD CITY PLANNING COMMISSION;
NO PLAT REQUIRED.

For Seiler & Craig Surveying, Inc.
SECRETARY, CITY PLANNING COMMISSION;

SIGNED: *Trish Blue*

DATE: 8/14/06

SEILER & CRAIG SURVEYING, INC.

Douglas C. Seiler, PS & Chad F. Craig, PS

52 1/2 North Main Street

Mansfield, Ohio 44902

419-525-3644 Fax 419-525-3696

www.seilerandcraig.com

**SURVEY DESCRIPTION
PARCEL "B"**

PART LOT #789, PART LOT #790
and PART LOT #791
CITY OF MANSFIELD, OHIO

Situated in the City of Mansfield, County of Richland, State of Ohio and being known as part Lot #789, part Lot #790 and a part of Lot #791 of the consecutively numbered lots in said city, the entire tract being more particularly described as follows:

Beginning for the same at an iron pin found and accepted as marking the southwest corner of Lot #789; Thence, North 68 degrees 23 minutes 26 seconds East with the south line of said lot a distance of 59.65 feet to an iron pin set;

Thence, North 20 degrees 57 minutes 56 seconds West a distance of 51.32 feet to an iron pin set;

Thence, North 02 degrees 45 minutes 25 seconds East a distance of 143.54 to an iron pin set on the north line of Lot #789;

Thence, North 90 degrees 00 minutes 00 seconds West with said north line and the westerly prolongation thereof, a total distance of 130.16 feet to a railroad spike found on the north line of Lot #791;

Thence, South 00 degrees 09 minutes 38 seconds West a distance of 124.79 feet to an iron pin found;

Thence, North 79 degrees 37 minutes 24 seconds East a distance of 29.49 feet to an iron pin found;

Thence, South 04 degrees 32 minutes 26 seconds West a distance of 2.01 feet to an iron pin found;

Thence, North 75 degrees 09 minutes 10 seconds East a distance of 30.40 feet to an iron pin set;

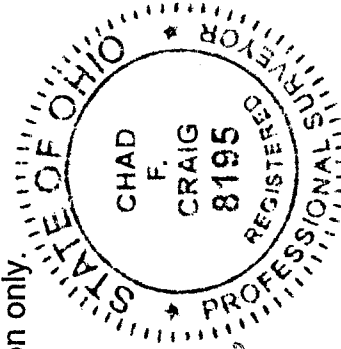
Thence, South 00 degrees 20 minutes 05 seconds West a distance of 111.03 feet to an iron pin set on the south line of Lot #790;

Thence, North 68 degrees 23 minutes 26 seconds East with said south line, a distance of 31.11 feet to the place of beginning containing a total of 22821 square feet, of which 8213 square feet are located within said part of said Lot #789, 9901 square feet are located within part of said Lot #790 and 3707 square feet are located within part of said Lot #791, according to survey by Chad F. Craig, Professional Surveyor #8195 on August 4, 2006.

Iron pins set are 5/8" rods with caps stamped "SEILER AND CRAIG INC".

Bearings are based on an assumed meridian and are intended to be used for angular determination only.

NEW SURVEY
OF EXISTING PARCEL
RICHLAND COUNTY
TAX MAP OFFICE
Mcb 8-18-06
INITIAL DATE



Chad F. Craig

For Seiler & Craig Surveying, Inc.

APPROVED BY THE MANSFIELD CITY PLANNING COMMISSION;
NO PLAT REQUIRED.

SIGNED: *Chad F. Craig*
SECRETARY, CITY PLANNING COMMISSION;

DATE: 8/18/06

X-79