

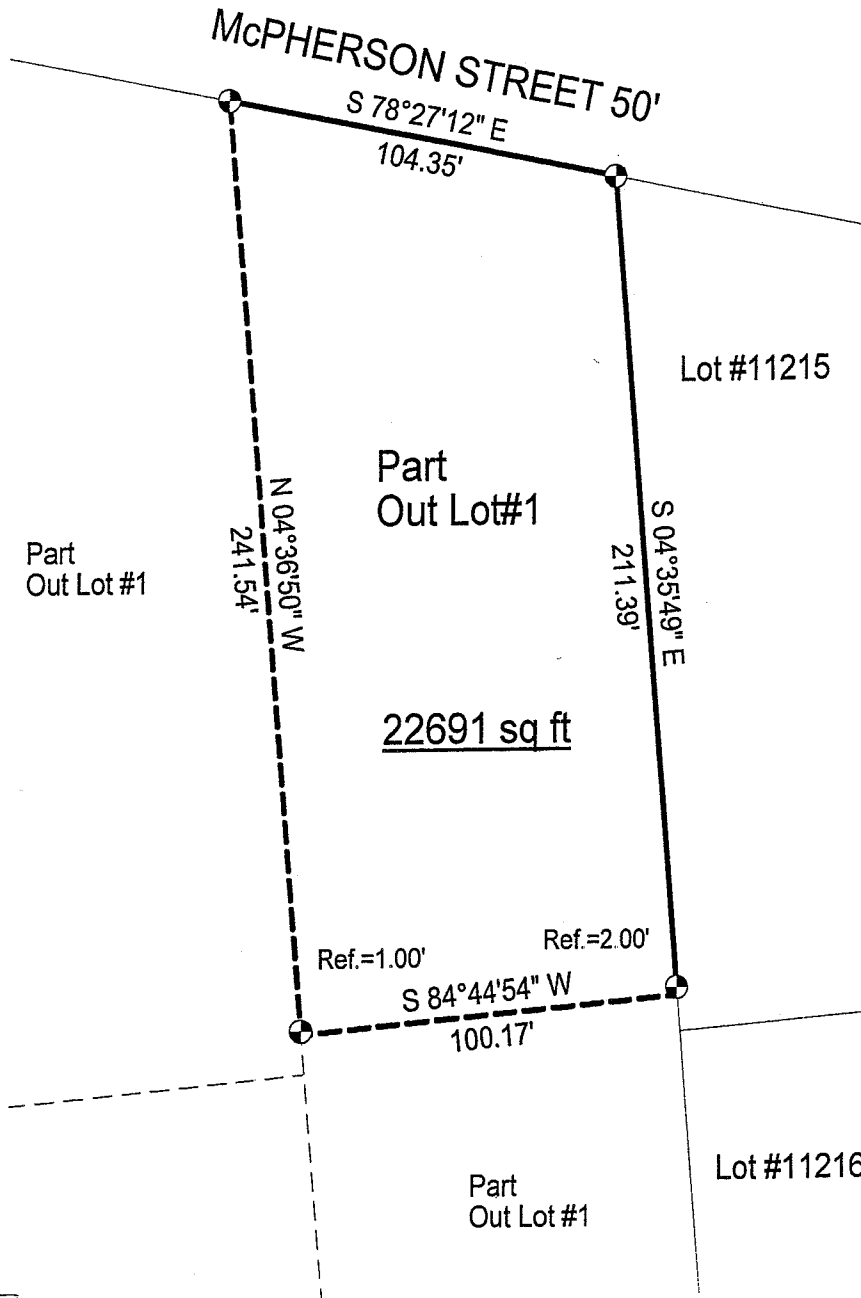
X-61

# SURVEY PLAT

Part Out Lot #1

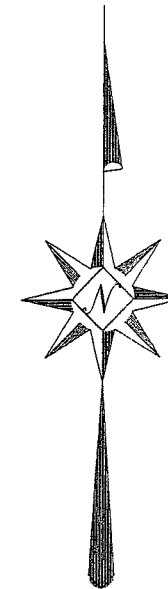
City of Mansfield

Richland County, Ohio



## LEGEND

● Iron pin set with cap stamped "CLANCY 7178"



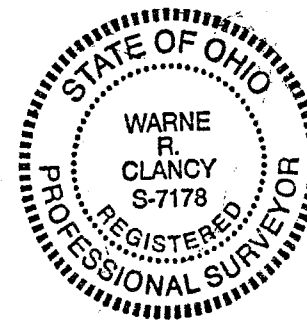
NEW SURVEY  
OF EXISTING PARCEL  
RICHLAND COUNTY  
TAX MAP OFFICE

MLB 8-3-06  
INITIAL DATE

Scale : 1" = 200'



Bearings are based on Survey O-196.



*Warne R. Clancy*  
Warne R. Clancy      P.S. #7178

DATE: 7/26/06

JOB NO.: W071306

SURVEY DESCRIPTION

Part Out Lot #1  
City of Mansfield  
Richland County, Ohio

Situated in the City of Mansfield, County of Richland, State of Ohio, and being a part of Out Lot #1, more particularly described as follows:

Beginning for the same at an iron pin set marking the northwest corner of Lot #11215 of the consecutively numbered lots of said City, the same being a point on the south right-of-way line of McPherson Street (50'); Thence, South 04 degrees 35 minutes 49 seconds East with the west line of said lot, passing an iron pin set for reference at 209.39 feet, a distance of 211.39 feet to a point thereon;

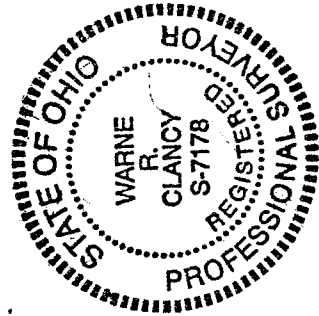
Thence, South 84 degrees 44 minutes 54 seconds West, a distance of 100.17 feet to a point;

Thence, North 04 degrees 36 minutes 50 seconds West, passing an iron pin set for reference at 1.00 feet, a distance of 241.54 feet to an iron pin set on the said south McPherson Street right-of-way line;

Thence, South 78 degrees 27 minutes 12 seconds East with said right-of-way line, a distance of 104.35 feet to the Place of Beginning, containing 22,691 square feet according to survey by Warne R. Clancy, Professional Surveyor #7178, on July 13, 2006.

Iron pins set are #5 rebars with caps stamped "CLANCY 7178".

Bearings are based on Survey O-196.



NEW SURVEY  
OF EXISTING PARCEL  
RICHLAND COUNTY,  
TAX MAP OFFICE

MRB S-206  
INITIAL DATE

*Warne R. Clancy*  
Warne R. Clancy P.S. 7178

X-61