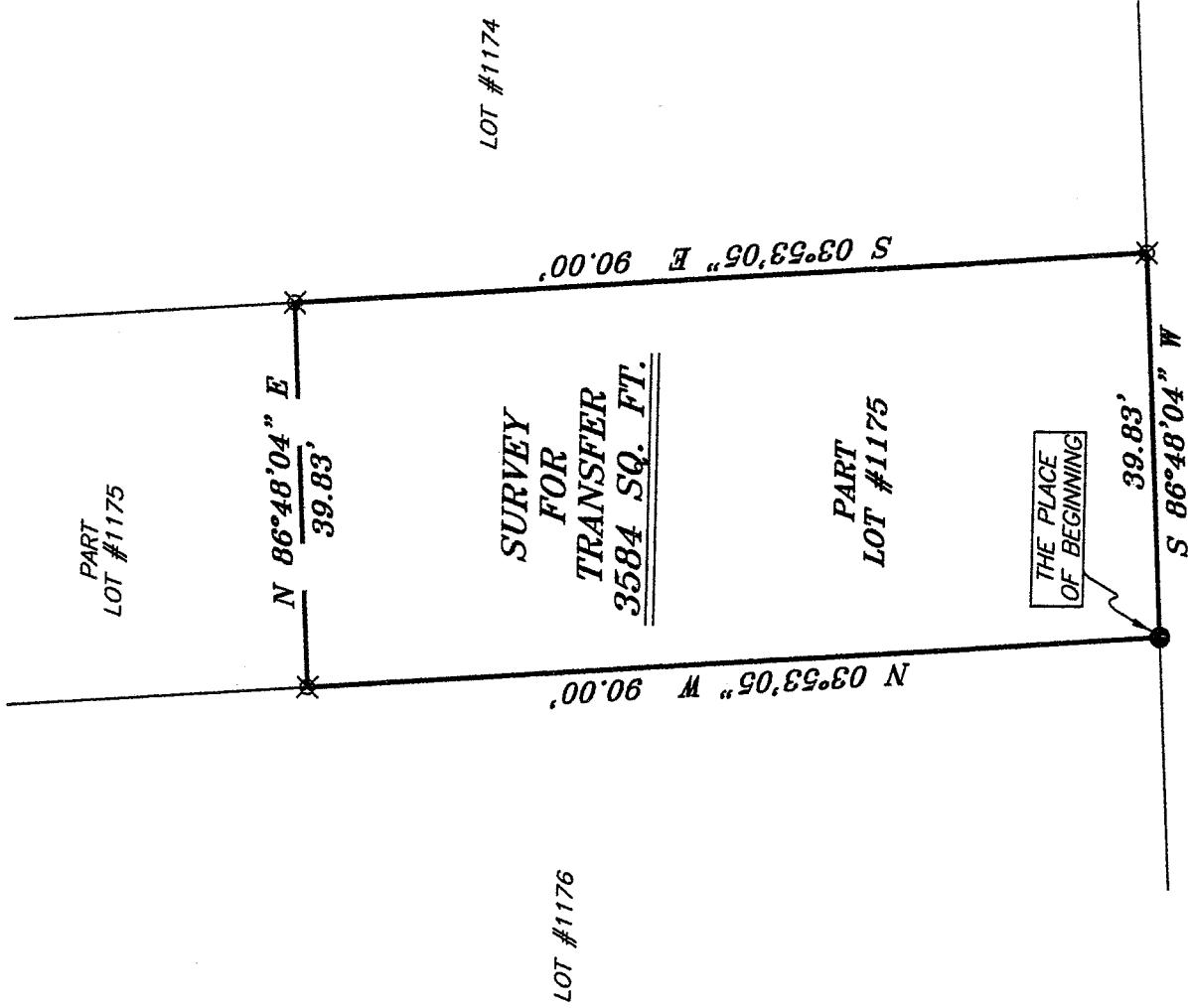


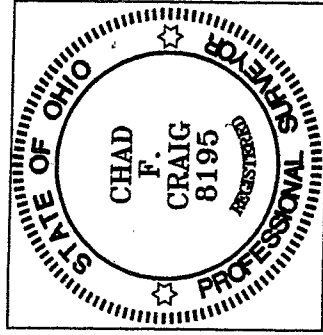
NORTH



BEARINGS ARE BASED ON AN ASSUMED MERIDIAN AND INTENDED TO BE USED FOR ANGULAR DETERMINATION ONLY.



EAST SECOND STREET 60' R/W



SURVEY BY: *Chad F. Craig*
 CHAD F. CRAIG ^{LES} #8195
 for SEILER & CRAIG SURVEYING INC.
 52-1/2 NORTH MAIN STREET
 MANSFIELD, OHIO 44902
 (419) 525-3644
 FAX (419) 525-3696

NEW SURVEY
 OF EXISTING PARCEL
 RICHLAND COUNTY,
 TAX MAP. OFFICE

INITIAL: *CF*
 DATE: 7-18-09

LEGEND

- IRON PIN FOUND
- ⊘ MAG NAIL SPIKE SET
- ▲ RAILROAD SPIKE FOUND
- ⊗ 5/8" IRON PIN SET WITH CAP STAMPED "SEILER AND CRAIG, INC."

SURVEY PLAT FOR
 PROPERTY TRANSFER

PART LOT #1175
 CITY OF MANSFIELD
 RICHLAND COUNTY, OHIO

DATE: JULY 5, 2006 SCALE: 1"=20'

229SECOND.DWG

X-32

SEILER & CRAIG SURVEYING, INC.

Douglas C. Seiler, PS & Chad F. Craig, PS
52 1/2 North Main Street
Mansfield, Ohio 44902
419-525-3644 Fax 419-525-3696
www.seilerandcraig.com

SURVEY DESCRIPTION

PART OF LOT # 1175
CITY OF MANSFIELD, OHIO

Situated in the City of Mansfield, County of Richland, State of Ohio and being known as a part of Lot #1175 of the consecutively numbered lots in said city, and being more particularly described as follows:

Beginning for the same at an iron pin found and accepted as marking the southwest corner of said lot; Thence, North 03 degrees 53 minutes 05 seconds West with the west line of said lot, a distance of 90.00 feet to an iron pin set;

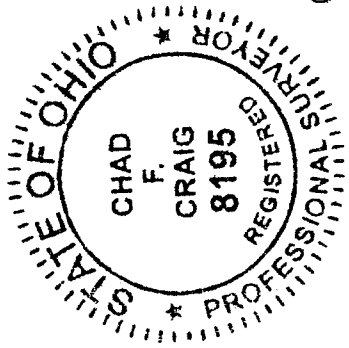
Thence, North 86 degrees 48 minutes 04 seconds East a distance of 39.83 feet to an iron pin set on the east line of said lot;

Thence, South 03 degrees 53 minutes 05 seconds East with said east line, a distance of 90.00 feet to an iron pin set on the south line of said lot;

Thence, South 86 degrees 48 minutes 04 seconds West with said south line, a distance of 39.83 feet to the place of beginning, containing 3584 square feet according to survey by Chad F. Craig P.S. #8195 for Seiler and Craig Surveying, Inc. on July 5, 2006.

Iron pins set are 5/8" rods with caps stamped "SEILER AND CRAIG, INC."

Bearings are based on an assumed meridian and are intended to be used for angular determination only.



Chad F. Craig

Chad F. Craig P.S. #8195
for Seiler and Craig Surveying, Inc.

NEW SURVEY
OF EXISTING PARCEL
RICHLAND COUNTY
TAX MAP OFFICE

EW 7-18-06
INITIAL DATE

X-32