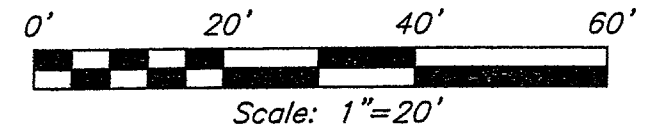


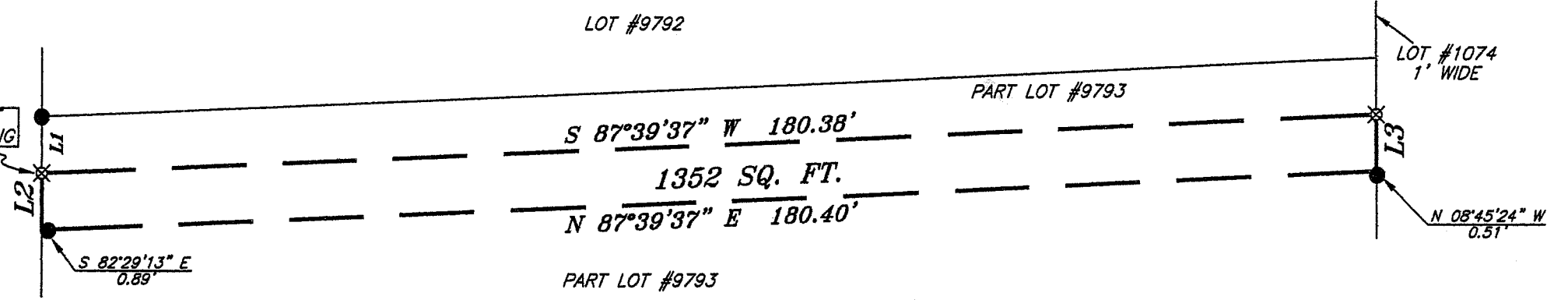
X-25



BEARINGS ARE BASED ON AN ASSUMED MERIDIAN AND INTENDED TO BE USED FOR ANGULAR DETERMINATION ONLY.

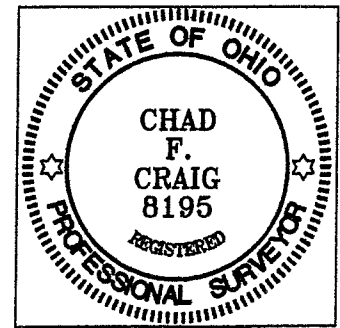
RUSSELL ROAD 60' R/W

THE PLACE OF BEGINNING



NEW SPLIT
RICHLAND COUNTY
TAX MAP OFFICE
EAK INITIALS 7-11-06 DATE

LINE	BEARING	DISTANCE
L1	S 00°35'43" E	7.45'
L2	S 00°35'43" E	7.50'
L3	N 00°41'43" W	7.50'



- LEGEND**
- IRON PIN FOUND
 - ⊕ MAG NAIL SPIKE SET
 - ▲ RAILROAD SPIKE FOUND
 - ⊗ 5/8" IRON PIN SET WITH CAP STAMPED "SEILER AND CRAIG, INC."

SURVEY PLAT FOR
PROPERTY TRANSFER

PART LOT #9793
CITY OF MANSFIELD
RICHLAND COUNTY, OHIO

DATE: JUNE 17, 2006 SCALE: 1"=20'

WROBLESKI.DWG

Chad F. Craig

SURVEY BY: CHAD F. CRAIG PS. #8195
for SEILER & CRAIG SURVEYING INC.
52-1/2 NORTH MAIN STREET
MANSFIELD, OHIO 44902
(419) 525-3644
FAX (419) 525-3696

X-25

X-25

SEILER & CRAIG SURVEYING, INC.

Douglas C. Seiler, PS & Chad F. Craig, PS
52 1/2 North Main Street
Mansfield, Ohio 44902
419-525-3644 Fax 419-525-3696
www.seilerandcraig.com

SURVEY DESCRIPTION

**PART OF LOT #9793
CITY OF MANSFIELD, OHIO**

Situated in the City of Mansfield, County of Richland, State of Ohio and being known as a part of Lot #9793 of the consecutively numbered lots in said city, and being more particularly described as follows:

Commencing at an iron pin found and accepted as marking the northwest corner of said lot; Thence, South 00 degrees 35 minutes 43 seconds East with the west line of said lot, a distance of 7.45 feet to an iron pin set, the place of beginning of the parcel herein described'

Thence, continuing South 00 degrees 35 minutes 43 seconds East with said west line, a distance of 7.50 feet to a point referenced by an iron pin found on a bearing of South 82 degrees 29 minutes 13 seconds East and at a distance of 0.89 feet;

Thence, North 87 degrees 39 minutes 37 seconds East a distance of 180.40 feet to a point on the east line of said lot, said point referenced by an iron pin found on a bearing of South 08 degrees 45 minutes 24 seconds East and at a distance of 0.51 feet;

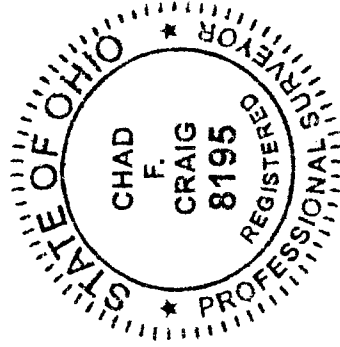
Thence, North 00 degrees 41 minutes 43 seconds West with said east line, a distance of 7.50 feet to an iron pin set;

Thence, South 87 degrees 39 minutes 37 seconds West a distance of 180.38 feet to the place of beginning, containing 1352 square feet, according to survey by Chad F. Craig Professional Surveyor #8195 for Seiler & Craig Surveying, Inc. on June 17, 2006.

Iron pins set are 5/8" rods with caps stamped "SEILER AND CRAIG, INC."

Bearings are based on an assumed meridian and are intended to be used for angular determination only.

The grantee, his heirs and assigns do hereby convent and agree that the parcel described by this instrument will not be transferred by said grantee, heirs, or assigns independently from a contiguous parcel of land with road frontage without the approval of the Richland County Regional Planning Commission.



Chad F. Craig

Chad F. Craig P.S. #8195
for Seiler & Craig Surveying, Inc.

NEW SPLIT
RICHLAND COUNTY
TAX MAP OFFICE
INITIAL DATE

X