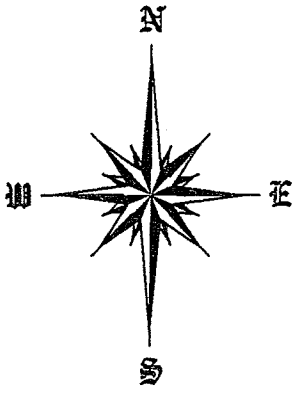
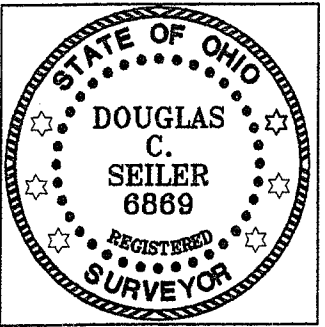
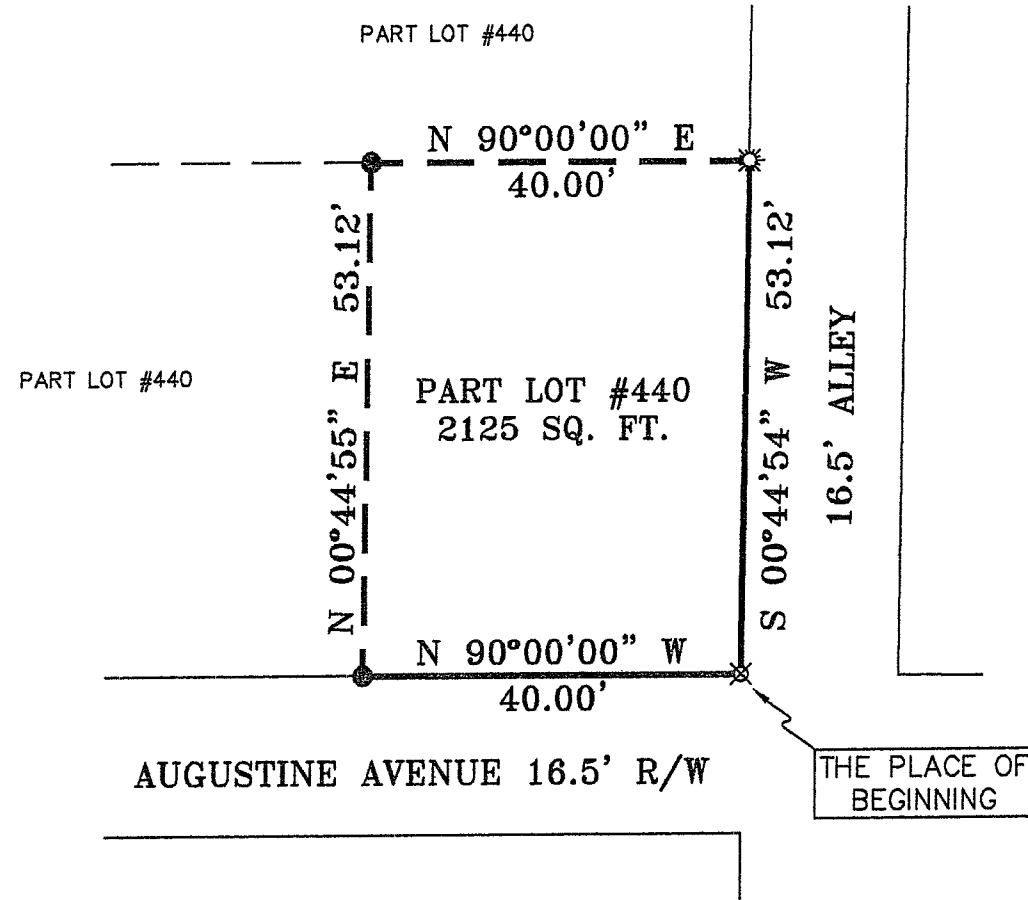


X-24

BEARINGS ARE BASED ON AN ASSUMED MERIDIAN



SCALE: 1" = 20'



Douglas Seiler

SURVEY BY: DOUGLAS C. SEILER PS. #6869
 for SEILER & CRAIG SURVEYING INC.
 52-1/2 NORTH MAIN STREET
 MANSFIELD, OHIO 44902
 (419) 525-3644
 FAX (419) 525-3696

NEW SURVEY
 OF EXISTING PARCEL
 RICHLAND COUNTY,
 TAX MAP OFFICE
 MIB 7-7-06
 INITIAL DATE

- LEGEND**
- IRON PIN FOUND
 - ☼ DRILL HOLE SET
 - ▲ RAILROAD SPIKE FOUND
 - ⊗ 5/8" IRON PIN SET WITH CAP STAMPED "SEILER AND CRAIG, INC."

SURVEY PLAT FOR	
PROPERTY TRANSFER	
PART LOT #440	
CITY OF MANSFIELD	
RICHLAND COUNTY, OHIO	
DATE: JULY 5, 2006	SCALE: 1"=20'
87AUGUSTINE	

X-24

SEILER & CRAIG SURVEYING, INC.

Douglas C. Seiler, PS & Chad F. Craig, PS
52 1/2 North Main Street
Mansfield, Ohio 44902
419-525-3644 Fax 419-525-3696
www.seilerandcraig.com

SURVEY DESCRIPTION

**PART OF LOT #440
CITY OF MANSFIELD, OHIO**

Situated in the City of Mansfield, County of Richland, State of Ohio and being known as a part of Lot #440 of the consecutively numbered lots in said city, and being more particularly described as follows:

Beginning for the same at an iron pin set marking the southeast corner of said lot; Thence, North 90 degrees 00 minutes 00 seconds West with the south line of said lot, a distance of 40.00 feet to an iron pin found;

Thence, North 00 degrees 44 minutes 55 seconds East a distance of 53.12 feet to an iron pin found;

Thence, North 90 degrees 00 minutes 00 seconds East a distance of 40.00 feet to a drill hole set on the east line of said lot;

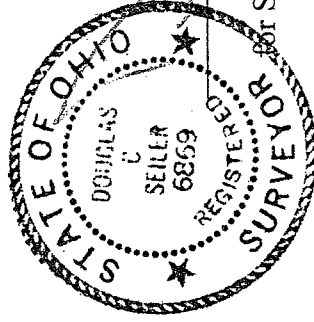
Thence, South 00 degrees 44 minutes 54 seconds West with said east line, a distance of 53.12 feet to the place of beginning, containing 2125 square feet, according to survey by Douglas C. Seiler, Professional Surveyor #6869 on July 5, 2006.

Iron pins set are 5/8" rods with caps stamped "SEILER AND CRAIG INC."

Bearings are based on an assumed meridian and are intended to be used for angular determination only.

NEW SURVEY
OF EXISTING PARCEL
RICHLAND COUNTY,
TAX MAP OFFICE

MS
INITIAL
7-7-06
DATE



Douglas C. Seiler
Douglas C. Seiler PS #6869
for Seiler & Craig Surveying, Inc.