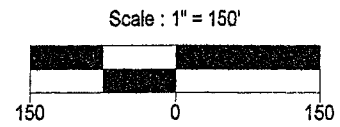


SURVEY PLAT

Part Southwest Quarter - Section 23
Troy Township, T-20, R-19
Richland County, Ohio

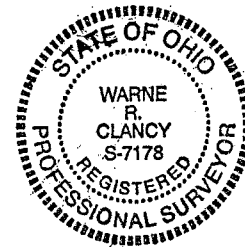


Bearings are based on Plat Vol. 25, pg. 137.

NEW SPLIT
RICHLAND COUNTY
TAX MAP OFFICE
NEW SURVEY
OF EXISTING PARCEL
RICHLAND COUNTY
TAX MAP OFFICE

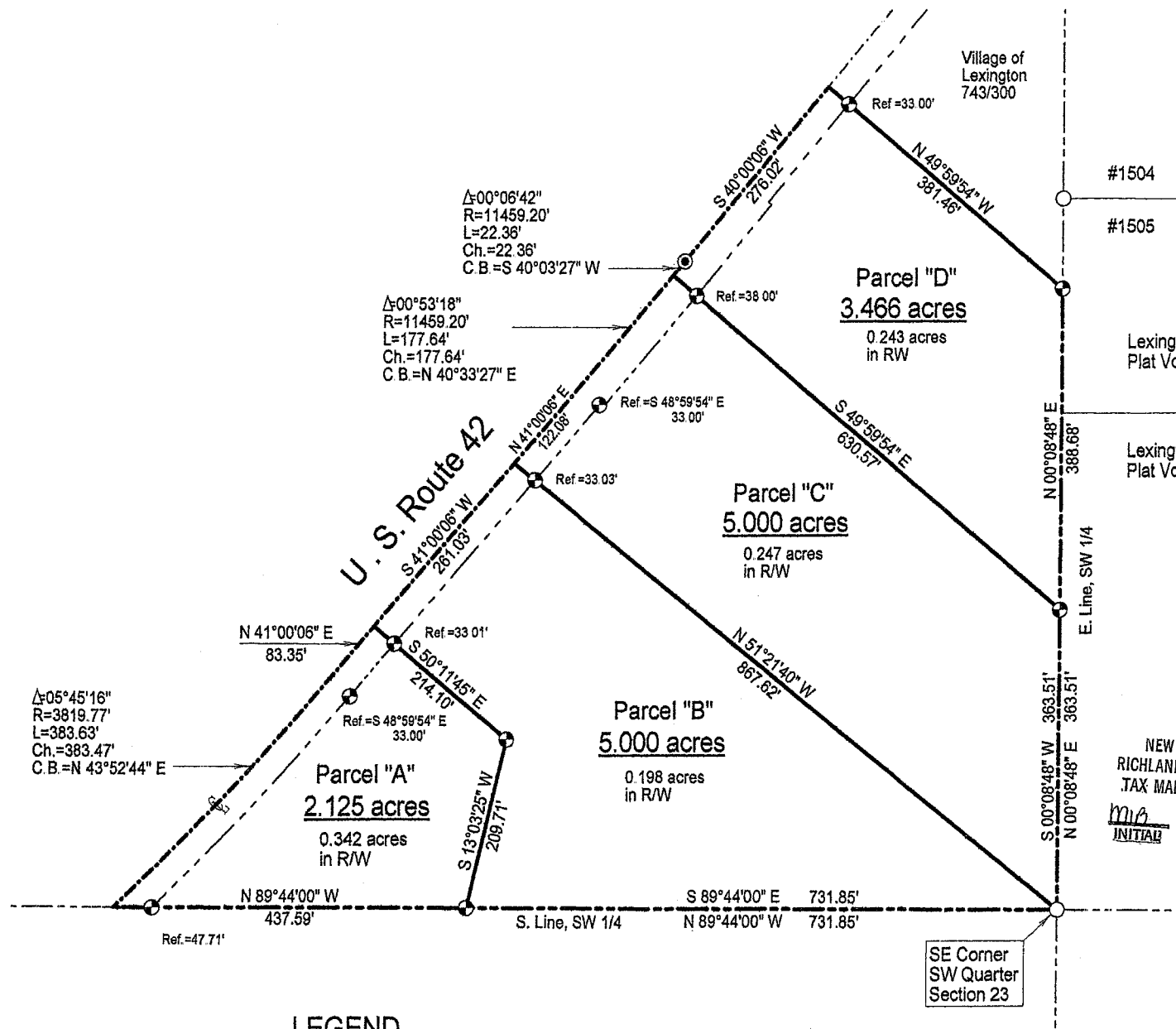
MLB 7-7-06
INITIAL DATE

MLB 7-7-06
INITIAL DATE



approved
Michael Deemer
Troy Twp Zoning
7-5-06

Warne R. Clancy
Warne R. Clancy P.S. #7178



LEGEND

- Iron pin set with cap stamped "CLANCY 7178"
- Iron pin found
- 2" Mag-nail set

DATE: 6/20/06
JOB NO.: W042006

SURVEY DESCRIPTION

Part Southwest Quarter – Section 23
Troy Township, T-20, R-19
Richland County, Ohio

Situated in the Township of Troy, County of Richland, State of Ohio, and being a part of the Southwest Quarter of Section 23 of Township 20 of Range 19, more particularly described as follows:

Commencing for the same at an iron pin found marking the southeast corner of said southwest quarter; Thence, North 89 degrees 44 minutes 00 seconds West with the south line of said quarter, a distance of 731.85 feet to an iron pin set thereon, the Place of Beginning;

Thence, continuing with said south line North 89 degrees 44 minutes 00 seconds West, passing an iron pin set for reference at 389.88 feet, a distance of 437.59 feet to a point on the centerline of U.S. Route 42;

Thence, northeasterly with said centerline along a curve to the left, defined by a 05 degree 45 minute 16 second central angle, a 3819.77 foot radius, a 383.63 foot arc, and a 383.47 foot chord which bears North 43 degrees 52 minutes 44 seconds East, to a point of tangency thereon as referenced by an iron pin set South 48 degrees 59 minutes 54 seconds East, a distance of 33.00 feet;

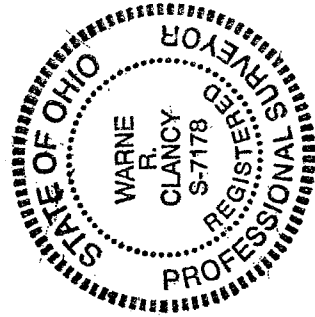
Thence, continuing with said centerline North 41 degrees 00 minutes 06 seconds East, a distance of 83.35 feet to a point thereon;

Thence, South 50 degrees 11 minutes 45 seconds East, passing an iron pin set for reference at 33.01 feet, a distance of 214.10 feet to an iron pin set;

Thence, South 13 degrees 03 minutes 25 seconds West, a distance of 209.71 feet to the Place of Beginning, containing 2.125 acres according to survey by Warne R. Clancy, Professional Surveyor #7178, on April 20, 2006.

Iron pins set are #5 rebars with caps stamped "CLANCY 7178".

Bearings are based on Plat Vol. 25, page 137.



NEW SPLIT
RICHLAND COUNTY
TAX MAP OFFICE

MLB
INITIAL

7-7-06
DATE

Parcel "A" – 2.125 ac.

Warne R. Clancy
Warne R. Clancy
P.S. 7178

Michael Deemer

Tray Temp Savary 7-5-06

SURVEY DESCRIPTION

Part Southwest Quarter – Section 23
Troy Township, T-20, R-19
Richland County, Ohio

Situated in the Township of Troy, County of Richland, State of Ohio, and being a part of the Southwest Quarter of Section 23 of Township 20 of Range 19, more particularly described as follows:

Beginning for the same at an iron pin found marking the southeast corner of said southwest quarter; Thence, North 51 degrees 21 minutes 40 seconds West, passing an iron pin set for reference at 834.59 feet, a distance of 867.62 feet to a point on the centerline of U.S. Route 42;

Thence, South 41 degrees 00 minutes 06 seconds West with said centerline, a distance of 261.03 feet to a point thereon;

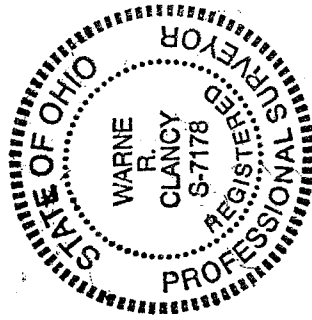
Thence, South 50 degrees 11 minutes 45 seconds East, passing an iron pin set for reference at 33.01 feet, a distance of 214.10 feet to an iron pin set;

Thence, South 13 degrees 03 minutes 25 seconds West, a distance of 209.71 feet to an iron pin set on the said south line of said quarter;

Thence, South 89 degrees 44 minutes 00 seconds East with said south line, a distance of 731.85 feet to the Place of Beginning, containing 5.000 acres according to survey by Warne R. Clancy, Professional Surveyor #7178, on April 20, 2006.

Iron pins set are #5 rebars with caps stamped "CLANCY 7178".

Bearings are based on Plat Vol. 25, page 137.



NEW SPLIT
RICHLAND COUNTY
TAX MAP OFFICE
MLB 7-7-06
INITIAL DATE

Parcel "B" – 5.000 ac.

Warne R. Clancy
Warne R. Clancy
P.S. 7178

Michael Dennis
Troy Map Zoning 7-5-06

X-21

SURVEY DESCRIPTION

**Part Southwest Quarter – Section 23
Troy Township, T-20, R-19
Richland County, Ohio**

Situated in the Township of Troy, County of Richland, State of Ohio, and being a part of the Southwest Quarter of Section 23 of Township 20 of Range 19, more particularly described as follows:

Beginning for the same at an iron pin found marking the southeast corner of said southwest quarter; Thence, North 51 degrees 21 minutes 40 seconds West, passing an iron pin set for reference at 834.59 feet, a distance of 867.62 feet to a point on the centerline of U.S. Route 42;

Thence, North 41 degrees 00 minutes 06 seconds East with said centerline, a distance of 122.08 feet to a point of curvature thereon, referenced by an iron pin set South 48 degrees 59 minutes 54 seconds East, a distance of 33.00 feet;

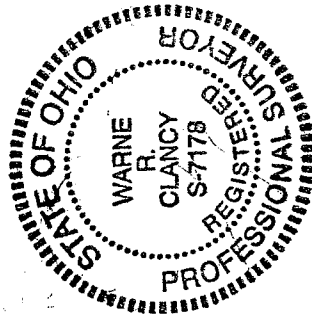
Thence, continuing with said centerline northeasterly along a curve to the left, defined by a 00 degree 53 minute 18 second central angle, an 11459.20 foot radius, an 177.64 foot arc, and an 177.64 foot chord which bears North 40 degrees 33 minutes 27 seconds East, to a point thereon;

Thence, South 49 degrees 59 minutes 54 seconds East, passing an iron pin set for reference at 38.00 feet, a distance of 630.57 feet to an iron pin set on the east line of said quarter;

Thence, South 00 degrees 08 minutes 48 seconds West with said east line, a distance of 363.51 feet to the Place of Beginning, containing 5.000 acres according to survey by Warne R. Clancy, Professional Surveyor #7178, on April 20, 2006.

Iron pins set are #5 rebars with caps stamped "CLANCY 7178".

Bearings are based on Plat Vol. 25, page 137.



NEW SPLIT
RICHLAND COUNTY,
TAX MAP OFFICE
MWC 7-7-06
INITIAL DATE

Parcel "C" – 5.000 ac.

Warne R. Clancy
Warne R. Clancy P.S. 7178
Michael Premie
Troy Twp zoning 7-5-06

SURVEY DESCRIPTION

Part Southwest Quarter -- Section 23
Troy Township, T-20, R-19
Richland County, Ohio

Situated in the Township of Troy, County of Richland, State of Ohio, and being a part of the Southwest Quarter of Section 23 of Township 20 of Range 19, more particularly described as follows:

Commencing for the same at an iron pin found marking the southeast corner of said southwest quarter; Thence, North 00 degrees 08 minutes 48 seconds East with the east line of said quarter, a distance of 363.51 feet to an iron pin set thereon, the Place of Beginning;

Thence, continuing with said east line North 00 degrees 08 minutes 48 seconds East, a distance of 388.68 feet to an iron pin set marking the southeast corner of a parcel owned by the Village of Lexington (743/300);

Thence, North 49 degrees 59 minutes 54 seconds West with the south line of said parcel, passing an iron pin set for reference at 348.46 feet, a distance of 381.46 feet to a point on the centerline of U.S. Route 42;

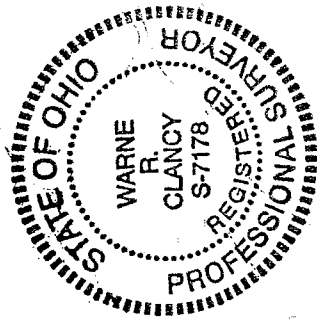
Thence, South 40 degrees 00 minutes 06 seconds West with said centerline, a distance of 276.02 feet to a 2" Mag-nail set marking a point of curvature thereon;

Thence, continuing with said centerline southwesterly along a curve to the right, defined by a 00 degree 06 minute 42 second central angle, an 11459.20 foot radius, a 22.36 foot arc, and a 22.36 foot chord which bears South 40 degrees 03 minutes 27 seconds West, to a point thereon;

Thence, South 49 degrees 59 minutes 54 seconds East, passing an iron pin set for reference at 38.00 feet, a distance of 630.57 feet to the Place of Beginning, containing 3.466 acres according to survey by Warne R. Clancy, Professional Surveyor #7178, on April 20, 2006.

Iron pins set are #5 rebars with caps stamped "CLANCY 7178".

Bearings are based on Plat Vol. 25, page 137.



NEW SURVEY
OF EXISTING PARCEL
RICHLAND COUNTY
TAX MAP OFFICE
MIB INITIAL 7-7-06 DATE

Parcel "D" - 3.466 ac.

Warne R. Clancy
Warne R. Clancy P.S. 7178

Michael Dremiel
Troy Twp zoning 7-5-06

X-21