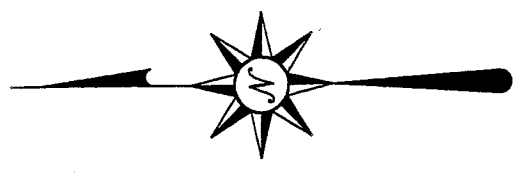


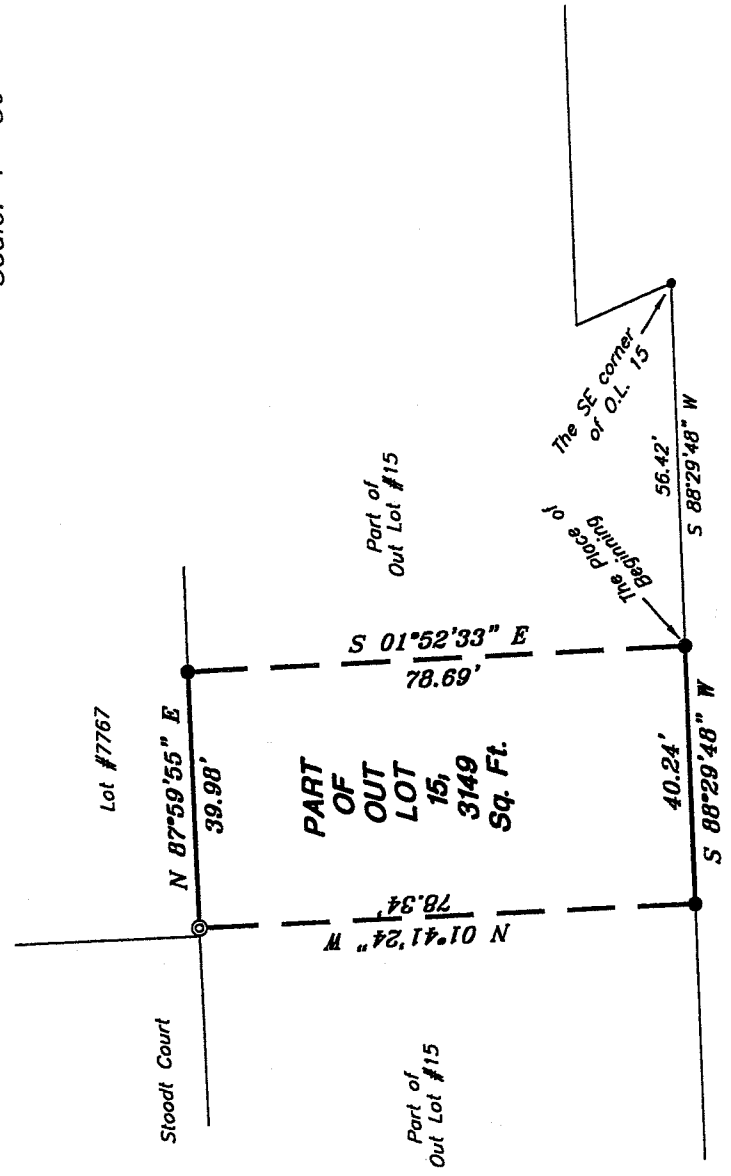
NORTH



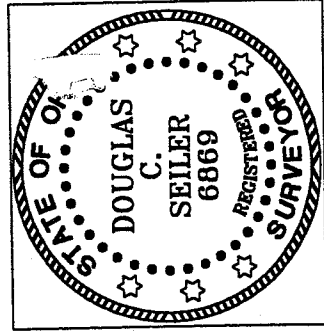
Bearings are based on Survey M-158 on file at the Richland County Tax Map Office, and are intended to be used for angular determination only.

LEGEND

- iron pin, found
- ⊙ drill hole in concrete, found



FORD AVENUE



Douglas C. Seiler

SURVEY BY: DOUGLAS C. SEILER P.S. #6869
 for SEILER & CRAIG SURVEYING INC.
 52-1/2 NORTH MAIN STREET
 MANSFIELD, OHIO 44902
 (419) 525-3644
 FAX (419) 525-3696

NEW SURVEY
 OF EXISTING PARCEL
 RICHLAND COUNTY
 TAX MAP OFFICE

INITIAL *MS* DATE *2-17-06*

SURVEY PLAT FOR
JUDSON SHULL
PART OF OUT LOT 15
CITY OF MANSFIELD
OHIO
Date: February 14, 2006
Scale: 1" = 30'
27ford2.asc/.dwg

W-136

SEILER & CRAIG SURVEYING, INC.

Douglas C. Seiler, PS & Chad F. Craig, PS
52 1/2 North Main Street
Mansfield, Ohio 44902
419-525-3644 Fax 419-525-3696
www.seilerandcraig.com

SURVEY DESCRIPTION

PART OF OUT LOT 15
CITY OF MANSFIELD, OHIO

Situated in the City of Mansfield, County of Richland, State of Ohio and being known as a part of Out Lot 15 in said city, and being more particularly described as follows:

Commencing at an iron pin found and accepted as marking the southeast corner of said Out Lot; Thence, South 88 degrees 29 minutes 48 seconds West with the south line of said Out Lot, a distance of 56.42 feet to an iron pin found, said iron pin being the place of beginning of the parcel herein described;

Thence, continuing South 88 degrees 29 minutes 48 seconds West with said south line, a distance of 40.24 feet to an iron pin found;

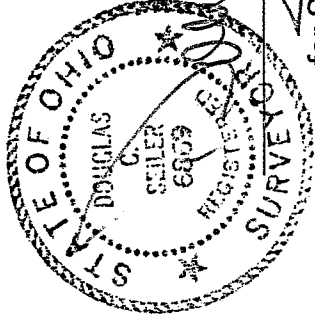
Thence, North 01 degree 41 minutes 24 seconds West a distance of 78.34 feet to a drill hole in concrete found, said drill hole being located on the north line of said Out Lot;

Thence, North 87 degrees 59 minutes 55 seconds East with said north line, a distance of 39.98 feet to an iron pin found;

Thence, South 01 degree 52 minutes 33 seconds East a distance of 78.69 feet to the place of beginning, containing 3149 square feet, according to survey by Douglas C. Seiler, Professional Surveyor #6869 for Seiler and Craig Surveying, Inc., on February 13, 2006.

Bearings are based on Survey M-158 on file at the Richland County Tax Map Office, and are intended to be used for angular determination only.

NEW SURVEY
OF EXISTING PARCEL
RICHLAND COUNTY
TAX MAP OFFICE
MLB 2-17-06
INITIAL DATE



Douglas C. Seiler
for Seiler & Craig Surveying, Inc.