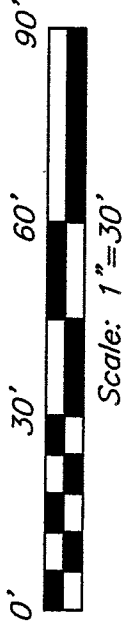
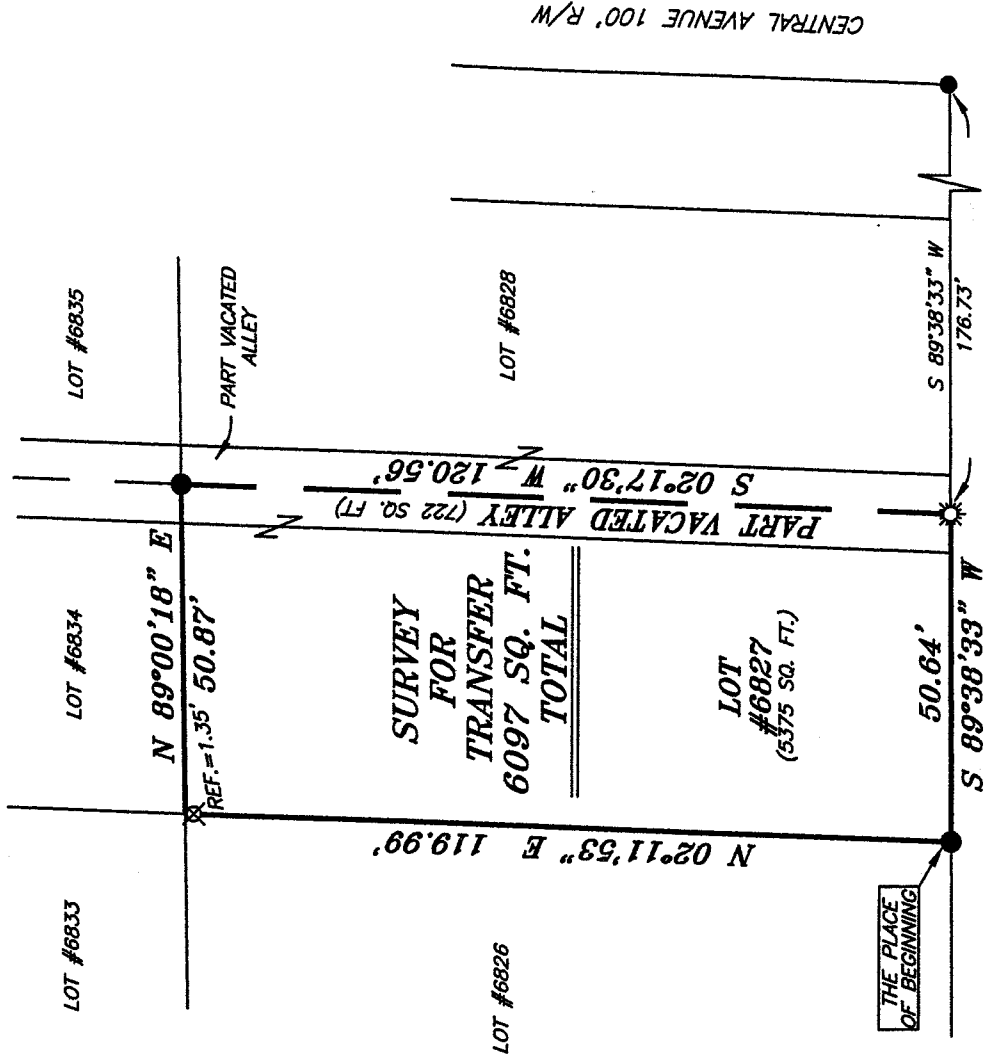


NOTES

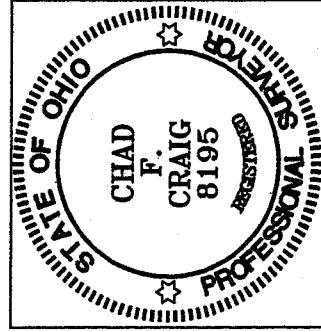


BEARINGS ARE BASED ON AN ASSUMED MERIDIAN AND ARE INTENDED TO BE USED FOR ANGULAR DETERMINATION ONLY.



AUBURN STREET 40' R/W

CENTRAL AVENUE 100' R/W



Chad F. Craig

SURVEY BY: CHAD F. CRAIG P.S. #6869
for SEILER & CRAIG SURVEYING INC.
52-1/2 NORTH MAIN STREET
MANSFIELD, OHIO 44902
(419) 525-3644
FAX (419) 525-3696

NEW SURVEY
OF EXISTING PARCEL
RICHLAND COUNTY
TAX MAP OFFICE
EAK 12-6-05
INITIAL DATE

LEGEND

- IRON PIN FOUND
- ☼ DRILL HOLE SET IN CONCRETE
- ⊗ 5/8" IRON PIN SET WITH CAP STAMPED "SEILER AND CRAIG, INC."

SURVEY PLAT FOR
PROPERTY TRANSFER

LOT #6827 AND PART VACATED ALLEY
CITY OF MANSFIELD
RICHLAND COUNTY, OHIO

DATE: DECEMBER 5, 2005 SCALE: 1"=30'
389AUBURN.DWG

W-52

W-52

SEILER & CRAIG SURVEYING, INC.

Douglas C. Seiler, PS & Chad F. Craig, PS
52 1/2 North Main Street
Mansfield, Ohio 44902
419-525-3644 Fax 419-525-3696
www.seilerandcraig.com

SURVEY DESCRIPTION

LOT #6827 and PART
OF VACATED ALLEY
CITY OF MANSFIELD, OHIO

Situated in the City of Mansfield, County of Richland, State of Ohio and being known as Lot #6827 of the consecutively numbered lots and part of a vacated alley in said city, the entire tract being more particularly described as follows:

Beginning for the same at an iron pin found and accepted as marking the southwest corner of said lot; Thence, North 02 degrees 11 minutes 53 seconds East with the west line of said lot, passing through an iron pin set for reference at 118.64 feet, a total distance of 119.99 feet to the northwest corner of said lot;

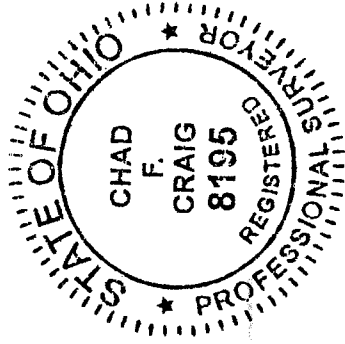
Thence, North 89 degrees 00 minutes 18 seconds East with the north line of said lot and the easterly prolongation thereof, a distance of 50.87 feet;

Thence, South 02 degrees 17 minutes 30 seconds West a distance of 120.56 feet to a drill hole set in concrete;

Thence, South 89 degrees 38 minutes 33 seconds West a distance of 50.64 feet to the place of beginning, containing a total of 6097 square feet, of which 5375 square feet are located within said Lot #6827, and 722 square feet are located within part of a vacated alley, according to survey by Chad F. Craig P.S. #8195 for Seiler and Craig Surveying, Inc. on December 5, 2005.

Iron pins set are 5/8" rods with caps stamped "SEILER AND CRAIG INC".

Bearings are based on an assumed meridian and are intended to be used for angular determination only.



NEW SURVEY
OF EXISTING PARCEL
RICHLAND COUNTY
TAX MAP OFFICE
FAX INITIAL DATE
12/10/05

Chad F. Craig
Chad F. Craig P.S. #8195
for Seiler & Craig Surveying, Inc.

W-5a