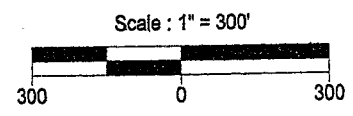
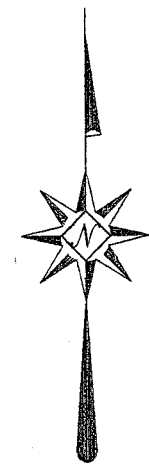
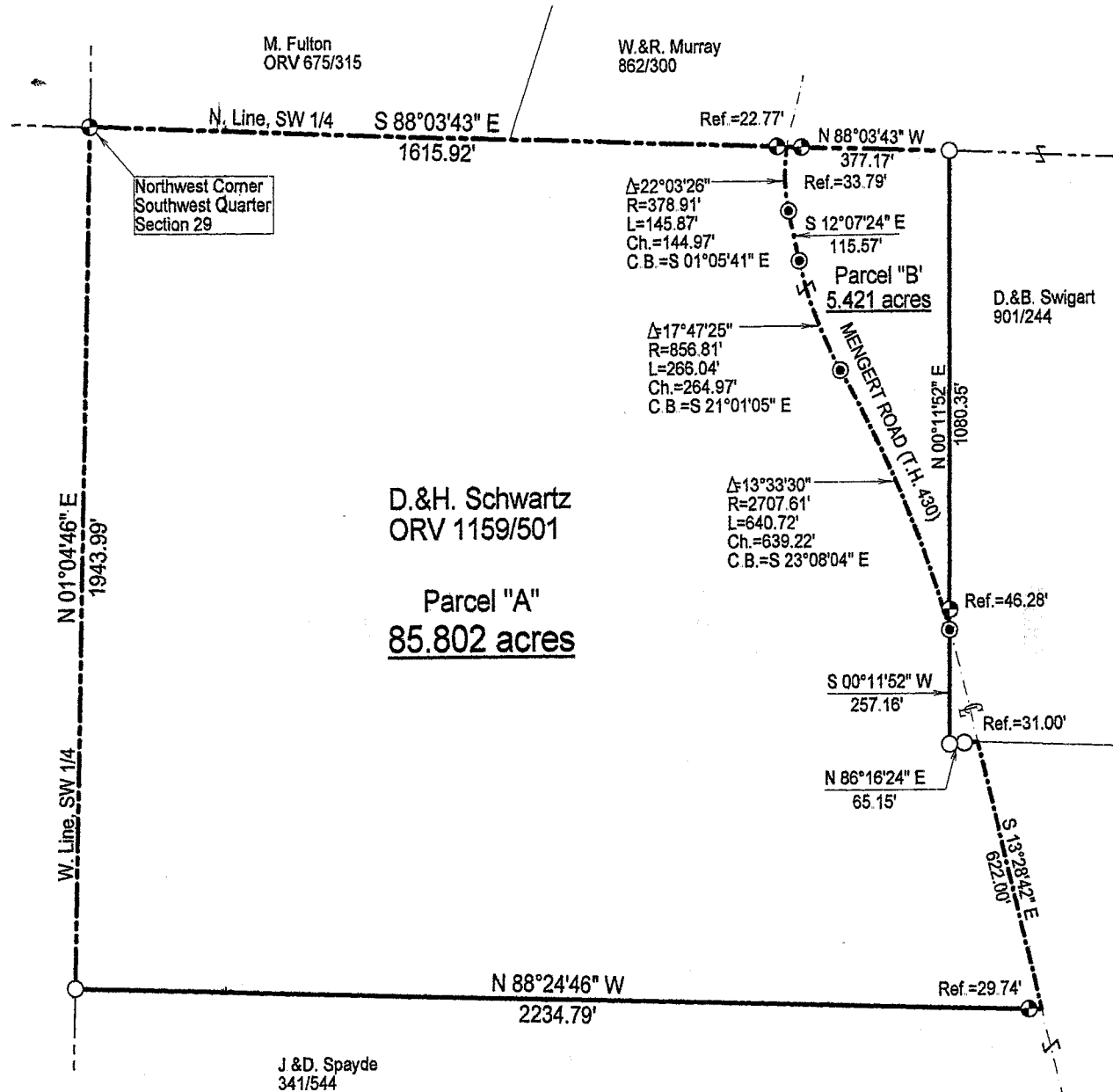


W-51

# SURVEY PLAT

Part Southwest Quarter - Section 29  
Monroe Township, T-22, R-17  
Richland County, Ohio



Bearings are assumed.

*meets Monroe Twp. zone*  
*12-1-05*  
*William R. Clancy*



*Warne R. Clancy*  
 Warne R. Clancy P.S. #7178

### LEGEND

- Iron pin set with cap stamped "CLANCY 7178"
- Iron pin found
- ⊙ 2" Mag-nail set

NEW SURVEY  
 OF EXISTING PARCEL  
 RICHLAND COUNTY  
 TAX MAP OFFICE  
 EAK 12-1-05  
 INITIAL DATE

NEW SPLIT  
 RICHLAND COUNTY  
 TAX MAP OFFICE  
 EAK 12-1-05  
 INITIAL DATE

DATE: 11/22/05  
 JOB NO.: W111405

SURVEY DESCRIPTION

**Part Southwest Quarter – Section 29  
Monroe Township, T-22, R-17  
Richland County, Ohio**

Situated in the Township of Monroe, County of Richland, State of Ohio and being a part of the Southwest Quarter of Section 29 of Township 22 of Range 17, more particularly described as follows:

Beginning for the same at an iron pin set marking the northwest corner of said southwest quarter; Thence, South 88 degrees 03 minutes 43 seconds East with the north line of said quarter, passing an iron pin set for reference at 1593.15 feet, a distance of 1615.92 feet to its intersection with the centerline of Mengert Road (T.H. 430);

Thence, southeasterly with said centerline along a curve to the left, defined by a 22 degree 03 minute 26 second central angle, a 378.91 foot radius, an 145.87 foot arc and an 144.97 foot chord which bears South 01 degrees 05 minutes 41 seconds East, to a 2" Mag-nail set marking its point of tangency thereon;

Thence, continuing with said centerline South 12 degrees 07 minutes 24 seconds East, a distance of 115.57 feet to a 2" Mag-nail set marking a point of curvature thereon;

Thence, continuing southeasterly with said centerline along a curve to the left, defined by a 17 degree 47 minute 25 second central angle, an 856.81 foot radius, a 266.04 foot arc, and a 264.97 foot chord which bears South 21 degrees 01 minutes 05 seconds East, to a 2" Mag-nail set marking a point of reverse curvature thereon;

Thence, continuing southeasterly with said centerline along a curve to the right, defined by a 13 degree 33 minute 30 second central angle, a 2707.61 foot radius, a 640.72 foot arc, and a 639.22 foot chord which bears South 23 degrees 08 minutes 04 seconds East, to a 2" Mag-nail set marking its intersection with the west line of a parcel owned by D. & B. Swigart (901/244);

Thence, South 00 degrees 11 minutes 52 seconds West with said west line, a distance of 257.16 feet to an iron pin found marking the southwest corner of said parcel;

Thence, North 86 degrees 16 minutes 24 seconds East with the south line of said parcel, passing an iron pin found for reference at 34.15 feet, a distance of 65.15 feet to its intersection with the said Mengert Road centerline;

Thence, South 13 degrees 28 minutes 42 seconds East with said centerline, a distance of 622.00 feet to the northwest corner of a parcel owned by J. & D. Spayde (341/544);

Thence, North 88 degrees 24 minutes 46 seconds West with the north line of said parcel, passing an iron pin set for reference at 29.74 feet, a distance of 2234.79 feet to an iron pin found on the west line of said southwest quarter;

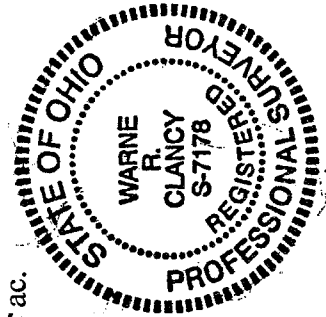
Thence, North 01 degrees 04 minutes 46 seconds East with said west line, a distance of 1943.99 feet to the Place of Beginning, containing 85.802 acres according to survey by Warne R. Clancy, Professional Surveyor #7178, on November 14, 2005.

Iron pins set are #5 rebars with caps stamped "CLANCY 7178".

Bearings are assumed.

Parcel "A" – 85.802 ac.

*Warne R. Clancy*  
Warne R. Clancy  
P.S. 7178



NEW SPLIT  
RICHLAND COUNTY  
TAX MAP OFFICE  
BAK INITIAL 12-6-05 DATE

*METS MONROE Twp. zoning*  
*12-1-05*  
*William R. Lubmberg*

W-51

SURVEY DESCRIPTION

Part Southwest Quarter – Section 29  
Monroe Township, T-22, R-17  
Richland County, Ohio

Situated in the Township of Monroe, County of Richland, State of Ohio and being a part of the Southwest Quarter of Section 29 of Township 22 of Range 17, more particularly described as follows:

Commencing for the same at an iron pin set marking the northwest corner of said southwest quarter; Thence, South 88 degrees 03 minutes 43 seconds East with the north line of said quarter, passing an iron pin set for reference at 1593.15 feet, a distance of 1615.92 feet to its intersection with the centerline of Mengert Road (T.H. 430), the Place of Beginning;

Thence, southeasterly with said centerline along a curve to the left, defined by a 22 degree 03 minute 26 second central angle, a 378.91 foot radius, an 145.87 foot arc and an 144.97 foot chord which bears South 01 degrees 05 minutes 41 seconds East, to a 2" Mag-nail set marking its point of tangency thereon;

Thence, continuing with said centerline South 12 degrees 07 minutes 24 seconds East, a distance of 115.57 feet to a 2" Mag-nail set marking a point of curvature thereon;

Thence, continuing southeasterly with said centerline along a curve to the left, defined by a 17 degree 47 minute 25 second central angle, an 856.81 foot radius, a 266.04 foot arc, and a 639.22 foot chord which bears South 21 degrees 01 minutes 05 seconds East, to a 2" Mag-nail set marking a point of reverse curvature thereon;

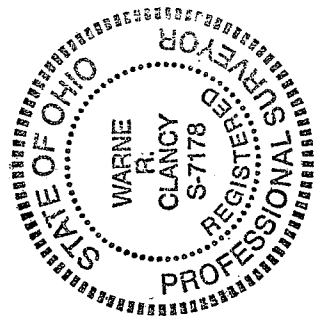
Thence, continuing southeasterly with said centerline along a curve to the right, defined by a 13 degree 33 minute 30 second central angle, a 2707.61 foot radius, a 640.72 foot arc, and a 639.22 foot chord which bears South 23 degrees 08 minutes 04 seconds East, to a 2" Mag-nail set marking its intersection with the west line of a parcel owned by D. & B. Swigart (901/244);

Thence, North 00 degrees 11 minutes 52 seconds East with said west line, passing an iron pin set for reference at 46.28 feet, a distance of 1080.35 feet to an iron pin found on the said north line of said quarter;

Thence, North 88 degrees 03 minutes 43 seconds West with said north line, passing an iron pin set for reference at 343.38 feet, a distance of 377.17 feet to the Place of Beginning, containing 5.421 acres according to survey by Warne R. Clancy, Professional Surveyor #7178, on November 14, 2005.

Iron pins set are #5 rebars with caps stamped "CLANCY 7178".

Bearings are assumed.



Parcel "B" – 5.421 ac.

*Warne R. Clancy*  
Warne R. Clancy  
P.S. 7178

*MEEYS Monroe Twp-200106*

12-1-05

*William R. Padmalyan*

NEW SURVEY  
OF EXISTING PARCEL  
RICHLAND COUNTY  
TAX MAP OFFICE

INITIAL

12/1/05

DA