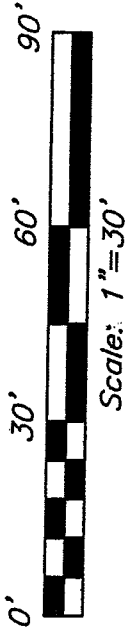
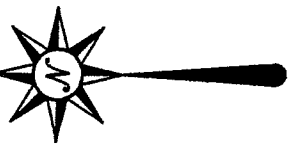
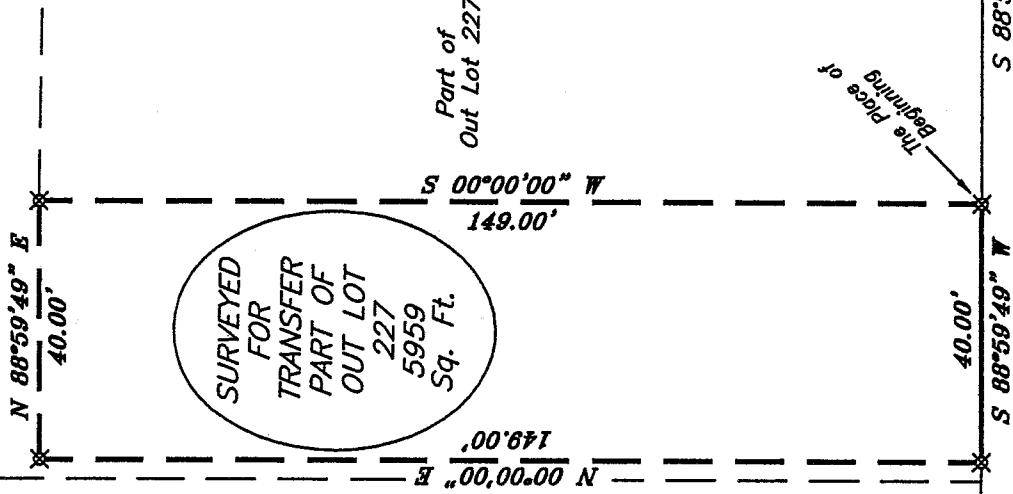


Bearings are based on an assumed meridian and are intended to be used for angular determination only.



Part of Out Lot 227



Part of Out Lot 227

LEGEND

- IRON PIN FOUND
- ⊗ 5/8" IRON PIN SET WITH CAP STAMPED "SEILER AND CRAIG, INC."

Part of Out Lot 227

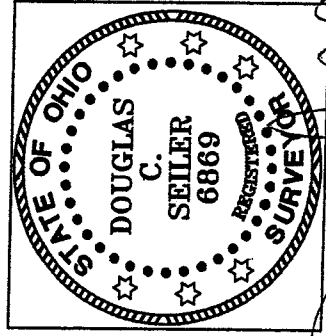
Part of Out Lot 227

Part of Out Lot 227

The SE corner of O. L. 227

The place of beginning

CLINE AVENUE



Douglas C. Seiler

SURVEY BY: DOUGLAS C. SEILER PS. #6869
for SEILER & CRAIG SURVEYING INC.
52-1/2 NORTH MAIN STREET
MANSFIELD, OHIO 44902
(419) 525-3644
FAX (419) 525-3696

NEW SURVEY OF EXISTING PARCEL RICHLAND COUNTY, OHIO
TAX MAP OFFICE

mlb 9.25.05
INITIAL DATE

SURVEY PLAT FOR MONASTRA

PART OF OUT LOT 227 CITY OF MANSFIELD OHIO

DATE: September 19, 2005 SCALE: 1"= 30'

238cliner.asc/.dwg

V-267

SEILER & CRAIG SURVEYING, INC.

Douglas C. Seiler, PS & Chad F. Craig, PS
52 1/2 North Main Street
Mansfield, Ohio 44902
419-525-3644 Fax 419-525-3696
www.seilerandcraig.com

SURVEY DESCRIPTION

PART OF OUT LOT 227
CITY OF MANSFIELD, OHIO

Situated in the City of Mansfield, County of Richland, State of Ohio and being known as a part of Out Lot 227 in said city (commonly known as Subdivision 3 of Out Lot 227), and being more particularly described as follows:

Commencing at the southeast corner of said Out Lot, as referenced by an iron pin found on a bearing of South 00 degrees 00 minutes 00 seconds West and at a distance of 1.73 feet from said corner; Thence, South 88 degrees 59 minutes 49 seconds West with the south line of said Out Lot, a distance of 84.00 feet to an iron pin set; said iron pin being the place of beginning of the parcel herein described;

Thence, continuing South 88 degrees 59 minutes 49 seconds West with said south line, a distance of 40.00 feet to an iron pin set;

Thence, North 00 degrees 00 minutes 00 seconds East a distance of 149.00 feet to an iron pin set;

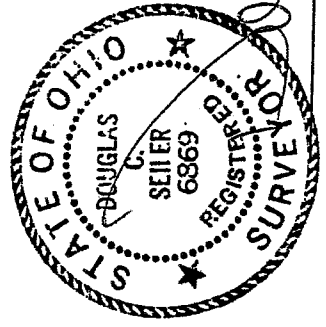
Thence, North 88 degrees 59 minutes 49 seconds East a distance of 40.00 feet to an iron pin set;

Thence, South 00 degrees 00 minutes 00 seconds West a distance of 149.00 feet to the place of beginning, containing 5959 square feet, according to survey by Douglas C. Seiler, Professional Surveyor #6869 for Seiler and Craig Surveying, Inc., on September 19, 2005.

Iron pins set are 5/8" rods with caps stamped "SEILER AND CRAIG, INC."

Bearings are based on an assumed meridian and are intended to be used for angular determination only.

NEW SURVEY
OF EXISTING PARCEL
RICHLAND COUNTY,
TAX MAP, OFFICE
MCS INITIAL 9-25-05 DATE



Douglas C. Seiler
Douglas C. Seiler PS #6869
for Seiler & Craig Surveying, Inc.