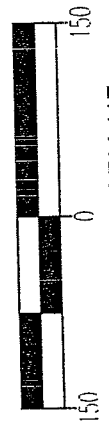


V-245

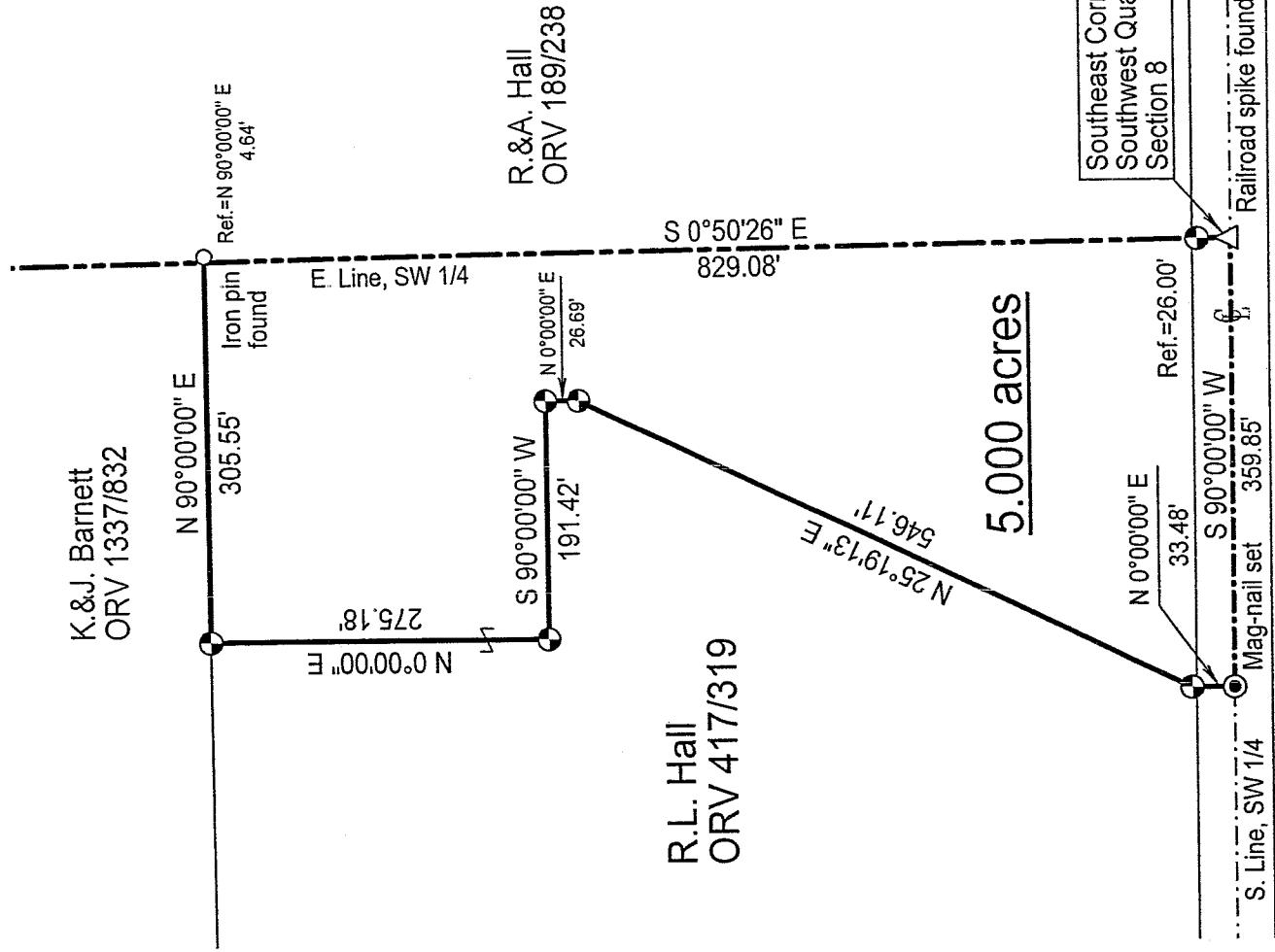
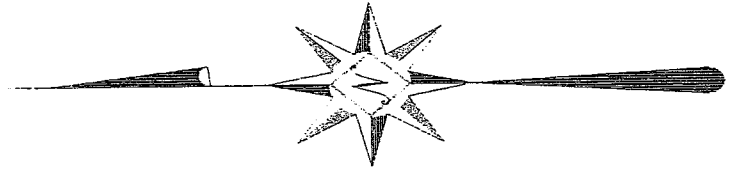
SURVEY PLAT

Part Southwest Quarter - Section 8
Plymouth Township, T-23, R-19
Richland County, Ohio

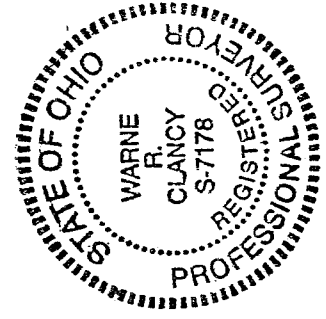
Scale : 1" = 150'



Bearings are based on ORV 417, page 319.



NEW SPLIT
RICHLAND COUNTY
TAX MAP OFFICE
M.C. 9-12-05
INITIAL DATA



LEGEND

- Iron pin set with cap stamped "CLANCY 7178"

Approved, No Plat Required.

Blaine Benjamin
Shelby City Eng
a-l-r-n-c

Warne R. Clancy
Warne R. Clancy
P.S. #178

DATE: 8/27/05
JOB NO.: W081805

SURVEY DESCRIPTION

Part Southwest Quarter – Section 8
Plymouth Township, T-23, R-19
Richland County, Ohio

Situated in the Township of Plymouth, County of Richland, State of Ohio, and being a part of the Southwest Quarter of Section 8 of Township 23 of Range 19, more particularly described as follows:

Beginning for the same at a Railroad spike found marking the southeast corner of said southwest quarter; Thence, South 90 degrees 00 minutes 00 seconds West with the south line of said quarter, the same being the centerline of Henry Road (T.H. 188), a distance of 359.85 feet to a Mag-nail set thereon;

Thence, North 00 degrees 00 minutes 00 seconds East, a distance of 33.48 feet to an iron pin set;

Thence, North 25 degrees 19 minutes 13 seconds East, a distance of 546.11 feet to an iron pin set;

Thence, North 00 degrees 00 minutes 00 seconds East, a distance of 26.69 feet to an iron pin set;

Thence, South 90 degrees 00 minutes 00 seconds West, a distance of 191.42 feet to an iron pin set;

Thence, North 00 degrees 00 minutes 00 seconds East, a distance of 275.18 feet to an iron pin set on the south line of a parcel owned by K. & J. Barnett (ORV 1337/832);

Thence, North 90 degrees 00 minutes 00 seconds East with said south line, a distance of 305.55 feet to a point on the east line of said southwest quarter, referenced by an iron pin found North 90 degrees 00 minutes 00 seconds East, a distance of 4.64 feet;

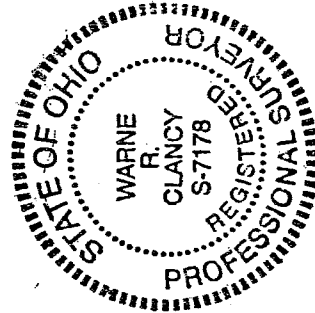
Thence, South 00 degrees 50 minutes 26 seconds East with said east line, passing an iron pin set for reference at 803.08 feet, a distance of 829.08 feet to the Place of Beginning, containing 5.000 acres according to survey by Warne R. Clancy, Professional Surveyor #7178, on August 18, 2005.

Iron pins set are #5 rebars with caps stamped "CLANCY 7178".

Bearings are based on ORV 417, page 319.

NEW SPLIT
RICHLAND COUNTY
TAX MAP OFFICE

MLB 9/24/05
INITIAL DATE



Warne R. Clancy
Warne R. Clancy P.S. 7178

V-245