

V-220

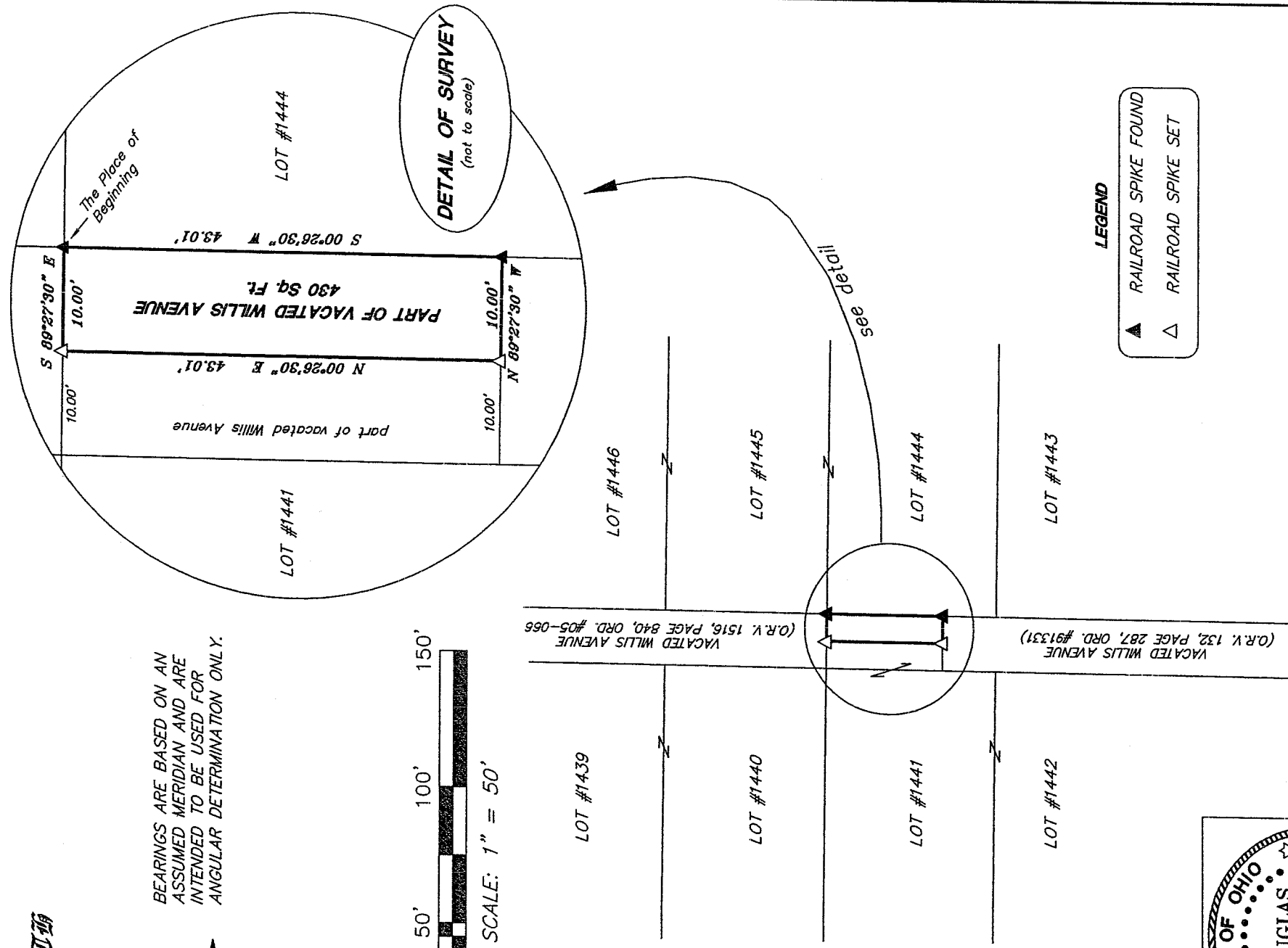
NORTH



BEARINGS ARE BASED ON AN ASSUMED MERIDIAN AND ARE INTENDED TO BE USED FOR ANGULAR DETERMINATION ONLY.



SCALE: 1" = 50'



DETAIL OF SURVEY
(not to scale)

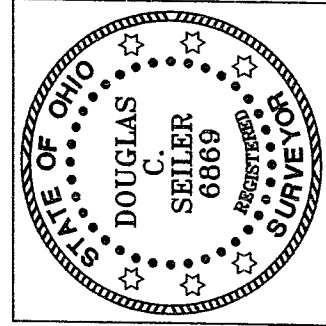
LEGEND

▲ RAILROAD SPIKE FOUND

△ RAILROAD SPIKE SET

NEW SPLIT
 RICHLAND COUNTY
 TAX MAP OFFICE

Initial: MIG 8-29-05
 DATA



Douglas C. Seiler

PREPARED BY: DOUGLAS C. SEILER PS #6869
 for SEILER & CRAIG SURVEYING, INC.
 52-1/2 NORTH MAIN STREET
 MANSFIELD, OHIO 44902
 (419) 525-3644
 FAX (419) 525-3696

SURVEY PLAT
PART OF VACATED WILLIS AVENUE
CITY OF MANSFIELD OHIO
DATE: AUGUST 23, 2005 SCALE: 1"=50'
ROBHEAT.DWG

V-220

SEILER & CRAIG SURVEYING, INC.

Douglas C. Seiler, PS & Chad F. Craig, PS
52 1/2 North Main Street
Mansfield, Ohio 44902
419-525-3644 Fax 419-525-3696
www.seilerandcraig.com

SURVEY DESCRIPTION

**PART OF VACATED WILLIS AVENUE
CITY OF MANSFIELD, OHIO**

Situated in the City of Mansfield, County of Richland, State of Ohio and being a part of vacated Willis Avenue (ref: ORV 1516, P. 840 & Ord. #05-066), and being more particularly described as follows:

Beginning for the same at a railroad spike found and accepted as marking the northwest corner of Lot #1444 of the consecutively numbered lots in said city; Thence, South 00 degrees 26 minutes 30 seconds West with the west line of said lot, the same being the east line of said vacated Willis Avenue, a distance of 43.01 feet to a railroad spike found;

Thence, North 89 degrees 27 minutes 30 seconds West a distance of 10.00 feet to a railroad spike set on the centerline of vacated Willis Avenue;

Thence, North 00 degrees 26 minutes 30 seconds East with said centerline, a distance of 43.01 feet to a railroad spike set;

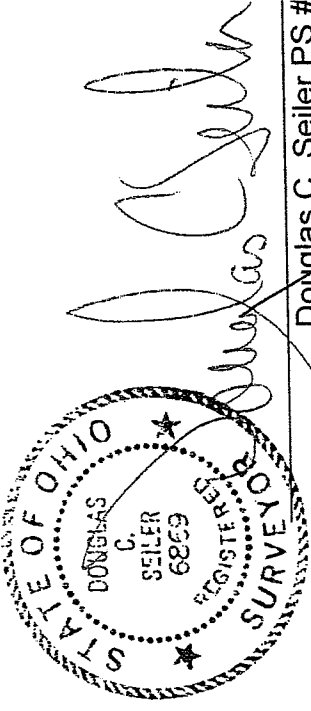
Thence, South 89 degrees 27 minutes 30 seconds East a distance of 10.00 feet to the place of beginning, containing 430 square feet, according to survey by Douglas C. Seiler, Professional Surveyor #6869 on August 23, 2005 for Seiler and Craig Surveying, Inc.

The grantee, his heirs and assigns do hereby covenant and agree that the parcel of land described by this instrument will not be conveyed by said grantee, heirs, or assigns independently or separately from a contiguous parcel of land without the approval of the City of Mansfield Planning Commission.

Iron pins set are 5/8" rods with caps stamped "SEILER AND CRAIG, INC."

Bearings are based on an assumed meridian and are intended to be used for angular determination only.

NEW SPLIT
RICHLAND COUNTY
TAX MAP OFFICE
MLB 8-29-05
INITIAL DATE



Douglas C. Seiler PS #6869
for Seiler & Craig Surveying, Inc.