

V-190

北南東西



Bearings are based on an assumed meridian and are intended to be used for angular determination only.

NEW SPLIT
RICHLAND COUNTY,
TAX MAP OFFICE

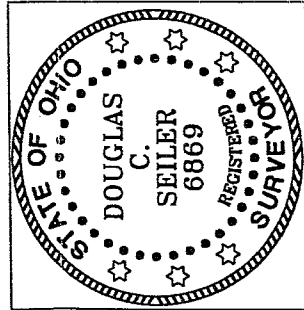
EAK INITIAL
8-5-05 DATE

Tax Map office considers this an existing property line per Deed Vol.686, Pg.554
E.A.K. Tax Map Supervisor



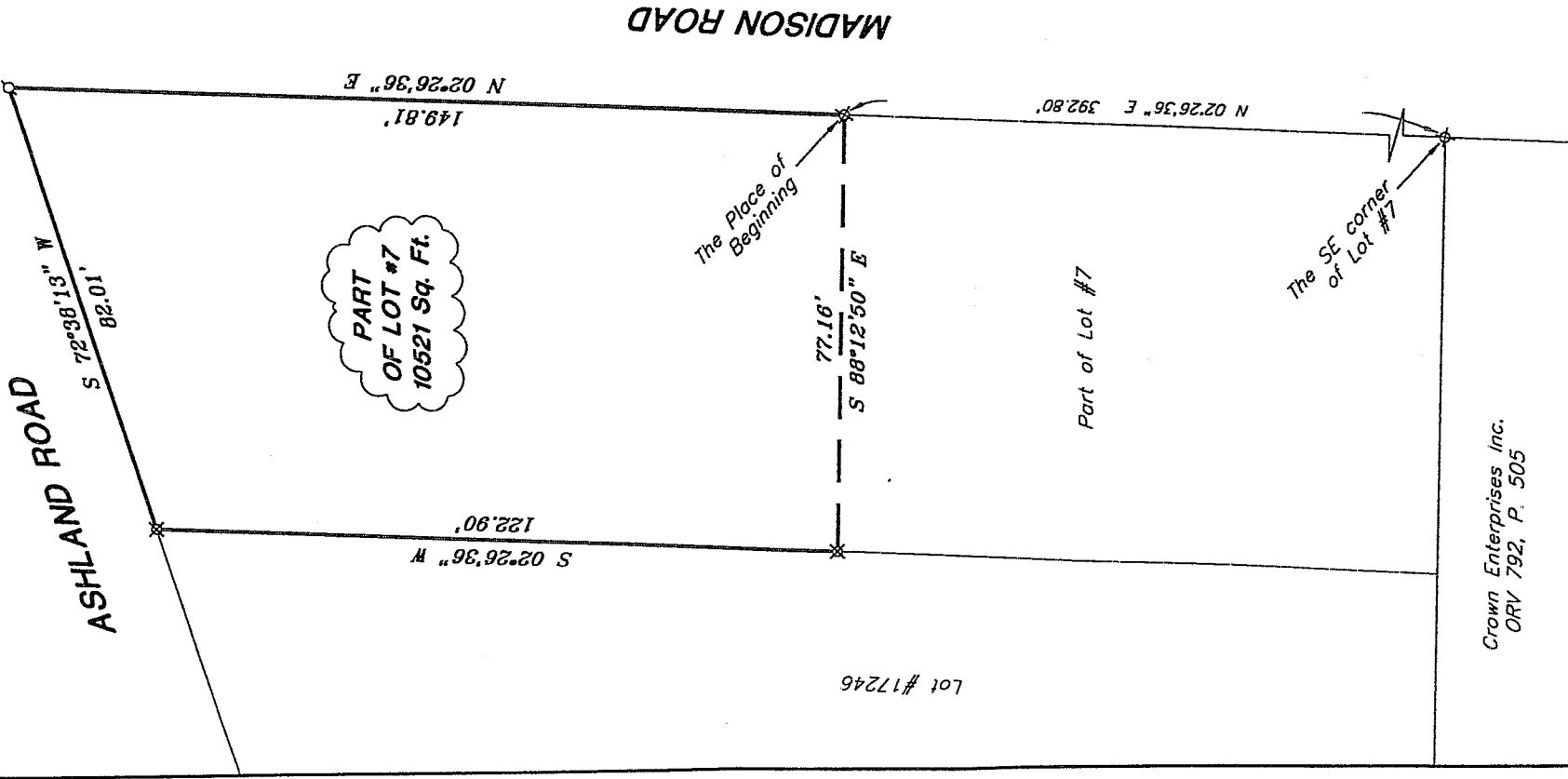
LEGEND

- ⊥ RAILROAD SPIKE SET
- ⊗ 5/8" IRON PIN SET WITH CAP STAMPED "SEILER AND CRAIG, INC."



Douglas C. Seiler

SURVEY BY: DOUGLAS C. SEILER PS: 6869
for SEILER & CRAIG SURVEYING INC.
52-1/2 NORTH MAIN STREET
MANSFIELD, OHIO 44902
(419) 525-3644
(419) 525-3696



PART OF LOT #7
10521 Sq. Ft.

SURVEY PLAT FOR
LLOYD T. BLEVINS

PART OF LOT #7, JOHN SHERMAN SUB'D.
MADISON TOWNSHIP
RICHLAND COUNTY, OHIO

Date: July 27, 2005 Scale: 1" = 30'

button.dwg

8-5-05
C. Seiler

SEILER & CRAIG SURVEYING, INC.

Douglas C. Seiler, PS & Chad F. Craig, PS
52 1/2 North Main Street
Mansfield, Ohio 44902
419-525-3644 Fax 419-525-3696
www.seilerandcraig.com

SURVEY DESCRIPTION

PART OF LOT #7
JOHN SHERMAN SUBDIVISION
MADISON TOWNSHIP, RICHLAND COUNTY, OHIO

Situated in the Township of Madison, County of Richland, State of Ohio and being known as a part of Lot #7 of the consecutively numbered lots in said subdivision, and being more particularly described as follows:

Commencing at an iron pin set marking the southeast corner of said lot; Thence, North 02 degrees 26 minutes 36 seconds East with the east line of said lot, a distance of 392.80 feet to an iron pin set, said iron pin being the place of beginning of the parcel herein described;

Thence, continuing North 02 degrees 26 minutes 36 seconds East with said east line, a distance of 149.81 feet to a railroad spike set on the south line of Ashland Road;

Thence, South 72 degrees 38 minutes 13 seconds West with said south line, a distance of 82.01 feet to an iron pin set;

Thence, South 02 degrees 26 minutes 36 seconds West with the west line of said lot, a distance of 122.90 feet to an iron pin set;

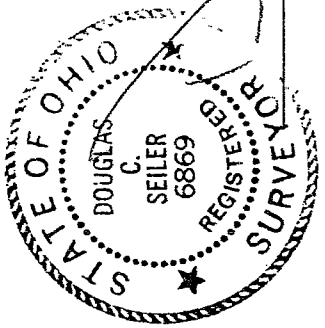
Thence, South 88 degrees 12 minutes 50 seconds East a distance of 77.16 feet to the place of beginning, containing 10521 square feet, according to survey by Douglas C. Seiler, Professional Surveyor #68869 for Seiler and Craig Surveying, Inc., on July 27, 2005.

Iron pins set are 5/8" rods with caps stamped "SEILER AND CRAIG, INC."

Bearings are based on an assumed meridian and are intended to be used for angular determination only.

NEW SPLIT
RICHLAND COUNTY
TAX MAP OFFICE

INITIAL: EA
DATE: 8-2-05

2-5-05
Douglas C. Seiler

Douglas C. Seiler PS #68869
for Seiler & Craig Surveying, Inc.