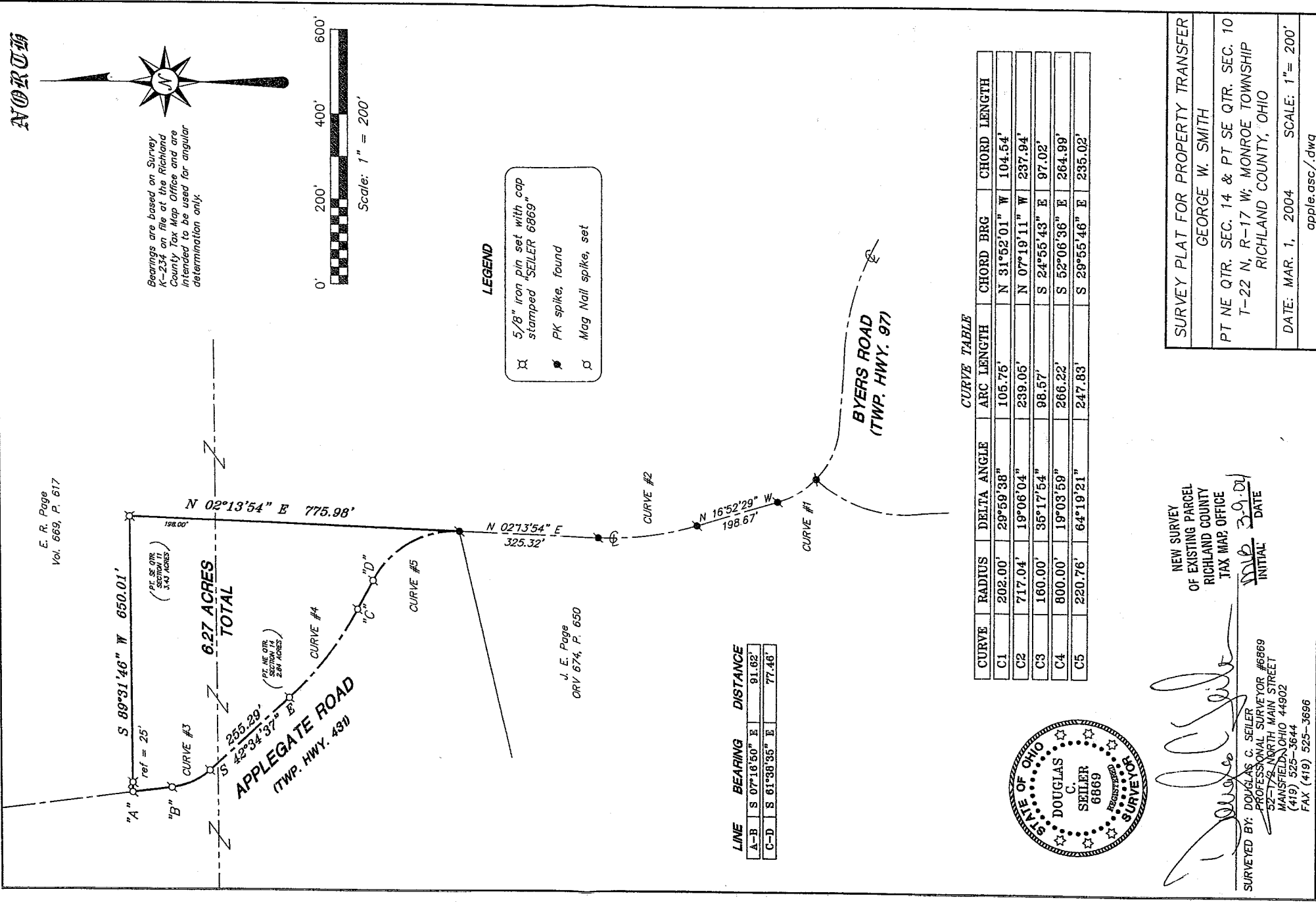


S.273



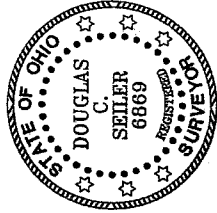
E. R. Page
Vol. 669, P. 617

J. E. Page
ORV 674, P. 650

NEW SURVEY
OF EXISTING PARCEL
RICHLAND COUNTY
TAX MAP OFFICE

DATE: 3-9-04
INITIAL: MB

SURVEYED BY: DOUGLAS C. SEILER
PROFESSIONAL SURVEYOR #6869
52-172 NORTH MAIN STREET
MANSFIELD, OHIO 44902
(419) 525-3644
FAX (419) 525-3686



SURVEY PLAT FOR PROPERTY TRANSFER
GEORGE W. SMITH
PT NE QTR. SEC. 14 & PT SE QTR. SEC. 10
T-22 N, R-17 W; MONROE TOWNSHIP
RICHLAND COUNTY, OHIO
DATE: MAR. 1, 2004 SCALE: 1"= 200'
apple.asc/.dwg

SRS

S-273

Douglas C. Seiler

Professional Land Surveyor

52½ North Main • Mansfield, Ohio 44902
(419) 525-3644

SURVEY DESCRIPTION

PART OF THE NE QUARTER OF SECTION 14,
And PART OF THE SE QUARTER OF SECTION 11
MONROE TOWNSHIP
RICHLAND COUNTY, OHIO

Situated in the Township of Monroe, County of Richland, State of Ohio and being a part of the Northeast Quarter of Section 14, and a part of the Southeast Quarter of Section 11, both of Township 22 North, Range 17 West, and being more particularly described as follows:

Commencing at a PK spike found and accepted as marking the point of intersection of the centerline of Byers Road (Township Highway 97) with the centerline of Applegate Road (Township Highway 431); Thence, with said centerline of Applegate Road, the following four courses and distances:

1. northwesterly along a curve concave to the northeast with a central angle of 29 degrees 59 minutes 38 seconds, a radius of 202.00 feet, an arc distance of 105.75 feet, a chord distance of 104.54 feet with a chord bearing of North 31 degrees 52 minutes 01 second West to a PK spike found and accepted as marking the point of tangency of said curve
 2. North 16 degrees 52 minutes 29 seconds West a distance of 198.67 feet to a PK spike found and accepted as marking a point of curve
 3. northwesterly along a curve concave to the east with a central angle of 19 degrees 06 minutes 04 seconds, a radius of 717.04 feet, an arc distance of 239.05 feet, a chord distance of 237.94 feet with a chord bearing of North 07 degrees 19 minutes 11 seconds West to a PK spike found and accepted as marking the point of tangency of said curve
 4. North 02 degrees 13 minutes 54 seconds East a distance of 325.32 feet to a PK spike found, said spike being the place of beginning of the parcel herein described;
- Thence, continuing North 02 degrees 13 minutes 54 seconds East, a distance of 775.98 feet to an iron pin set;

Thence, South 89 degrees 31 minutes 46 seconds West, passing through an iron pin set for reference at 625.01 feet, a total distance of 650.01 feet to a Mag Nail spike set on the centerline of Applegate Road;

Thence, with said centerline, the following six courses and distances:

S-273

1. South 07 degrees 16 minutes 50 seconds East a distance of 91.62 feet to a Mag Nail spike set
2. southeasterly along a curve concave to the east with a central angle of 35 degrees 17 minutes 54 seconds, a radius of 160.00 feet, an arc distance of 98.57 feet, a chord distance of 97.02 feet with a chord bearing of South 24 degrees 55 minutes 43 seconds East to a Mag Nail spike set marking the point of tangency of said curve
3. South 42 degrees 34 minutes 37 seconds East a distance of 255.29 feet to a Mag Nail spike set marking a point of curve
4. southeasterly along a curve concave to the northeast with a central angle of 19 degrees 03 minutes 59 seconds, a radius of 800.00 feet, an arc distance of 266.22 feet, a chord distance of 264.99 feet with a chord bearing of South 52 degrees 06 minutes 36 seconds East to a Mag Nail spike set marking the point of tangency of said curve
5. South 61 degrees 38 minutes 35 seconds East a distance of 77.46 feet to a Mag Nail spike set marking a point of curve
6. southeasterly along a curve concave to the southwest with a central angle of 64 degrees 19 minutes 21 seconds, a radius of 220.76 feet, an arc distance of 247.83 feet, a chord distance of 235.02 feet with a chord bearing of South 29 degrees 55 minutes 46 seconds East to the place of beginning,

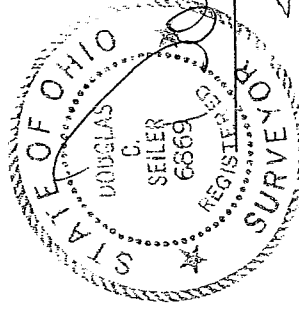
containing a total of 6.27 acres, of which 2.84 acres are located within part of said Northeast Quarter of Section 14, and 3.43 acres are located within part of said Southeast Quarter of Section 11, according to survey by Douglas C. Seiler, Professional Surveyor #6869 on March 1, 2004, but subject to the right of way of Applegate Road.

Iron pins set are 5/8" rods with caps stamped "SEILER 6869".

Bearings are based Survey K-234 on file at the Richland County Tax Map Office, and are intended to be used for angular determination only.

NEW SURVEY
OF EXISTING PARCEL
RICHLAND COUNTY,
TAX MAP OFFICE

mlb INITIAL
3-19-04 DATE



Douglas C. Seiler
Douglas C. Seiler
Professional Surveyor #6869