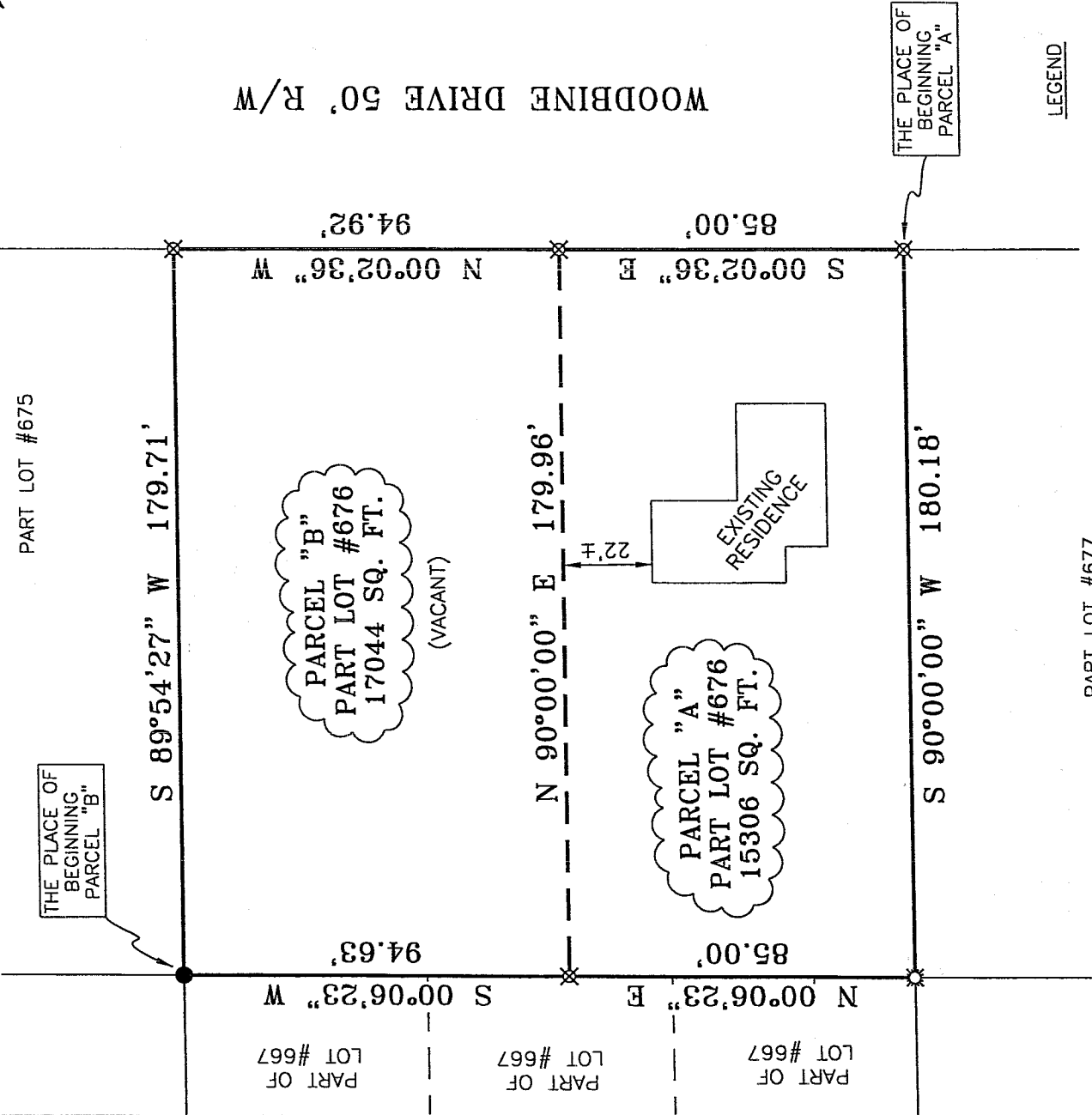


BEARINGS ARE BASED ON AN ASSUMED MERIDIAN

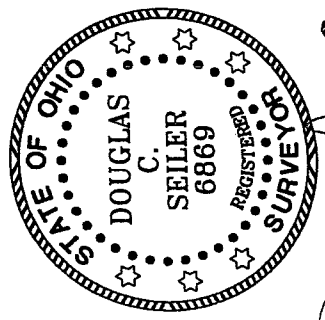


LEGEND

- IRON PIN FOUND
- ⊗ DRILL HOLE IN CONCRETE, SET
- ⊘ MAG NAIL SPIKE SET
- ⊗ IRON PIN SET WITH CAP STAMPED "SEILER 6869"

NEW SURVEY OF EXISTING PARCEL RICHLAND COUNTY TAX MAP OFFICE

MLB INITIAL
1-26-04 DATE



NEW SPLIT RICHLAND COUNTY TAX MAP OFFICE
MLB INITIAL
1-26-04 DATE

CITY OF ONTARIO

APPROVED DATE: Jan. 16, 2004

ZONING INSPECTOR Dallas Strickler

Douglas C. Seiler 1/17/04

SURVEYED BY: DOUGLAS C. SEILER
PROFESSIONAL SURVEYOR #6869
52-178 NORTH MAIN STREET
MANSFIELD, OHIO 44902
(419) 525-3644
FAX (419) 525-3696

SURVEY PLAT FOR
WEBB

PART LOT #676
CITY OF ONTARIO
RICHLAND COUNTY, OHIO

DATE: JANUARY 5, 2004 SCALE: 1"=40'

LOT676

S-233

S 833

S.233

Douglas C. Seiler
Professional Land Surveyor
52½ North Main • Mansfield, Ohio 44902
(419) 525-3644

SURVEY DESCRIPTION

PARCEL "A"

PART OF LOT #676
CITY OF ONTARIO, OHIO

Situated in the City of Ontario, County of Richland, State of Ohio and being the south part of Lot #676 of the consecutively numbered lots in said city, and being more particularly described as follows:

Beginning for the same at an iron pin set marking the southeast corner of said Lot #676; Thence, South 90 degrees 00 minutes 00 seconds West with the south line of said lot, a distance of 180.18 feet to a drill hole in concrete set, marking the southwest corner of said lot;

Thence, North 00 degrees 06 minutes 23 seconds East with the west line of said lot, a distance of 85.00 feet to an iron pin set;

Thence, North 90 degrees 00 minutes 00 seconds East a distance of 179.96 feet to an iron pin set on the east line of said lot;

Thence, South 00 degrees 02 minutes 36 seconds East with said east line, a distance of 85.00 feet to the place of beginning, containing 15306 square feet, according to survey by Douglas C. Seiler, Professional Surveyor #68869 on December 31, 2003.

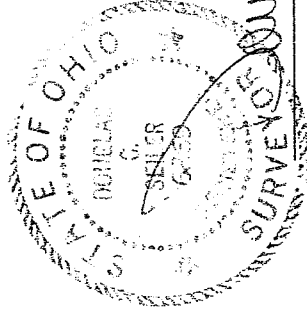
Iron pins set are 5/8" rods with caps stamped "SEILER 68869".

Bearings are based on an assumed meridian and are intended to be used for angular determination only.

CITY OF ONTARIO

APPROVED _____
DATE Jan. 16, 2004
ZONING INSPECTOR

Dallas Strickler



NEW SPLIT
HIGHLAND COUNTY,
TAX MAP OFFICE

MLC
INITIAL

1/21/04
DATE

Douglas C. Seiler
Douglas C. Seiler
Professional Surveyor #68869

Douglas C. Seiler

Professional Land Surveyor

52½ North Main • Mansfield, Ohio 44902
(419) 525-3644

SURVEY DESCRIPTION

PARCEL "B"

PART OF LOT #676
CITY OF ONTARIO, OHIO

Situated in the City of Ontario, County of Richland, State of Ohio and being the north part of Lot #676 of the consecutively numbered lots in said city, and being more particularly described as follows:

Beginning for the same at an iron pin found and accepted as marking the northwest corner of said lot; Thence, South 00 degrees 06 minutes 23 seconds West with the west line of said lot, a distance of 94.63 feet to an iron pin set;

Thence, North 90 degrees 00 minutes 00 seconds East a distance of 179.96 feet to an iron pin set on the east line of said lot;

Thence, North 00 degrees 02 minutes 36 seconds West with said east line, a distance of 94.92 feet to an iron pin set marking the northeast corner of said lot;

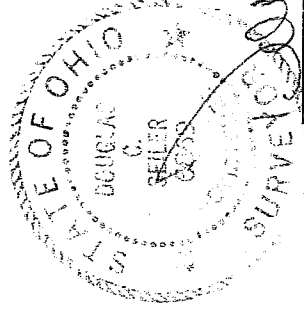
Thence, South 89 degrees 54 minutes 27 seconds West with the north line of said lot, a distance of 179.71 feet to the place of beginning, containing 17044 square feet, according to survey by Douglas C. Seiler, Professional Surveyor #6869 on December 31, 2003.

Iron pins set are 5/8" rods with caps stamped "SEILER 6869".

Bearings are based on an assumed meridian and are intended to be used for angular determination only.

NEW SURVEY
OF EXISTING PARCEL
RICHLAND COUNTY,
TAX MAP OFFICE

MSB INITIAL
1-26-04 DATE



CITY OF ONTARIO

APPROVED

DATE Jan. 16, 2004

ZONING INSPECTOR

Douglas C. Seiler

Douglas C. Seiler

Douglas C. Seiler
Professional Surveyor #6869

S-233

S-233