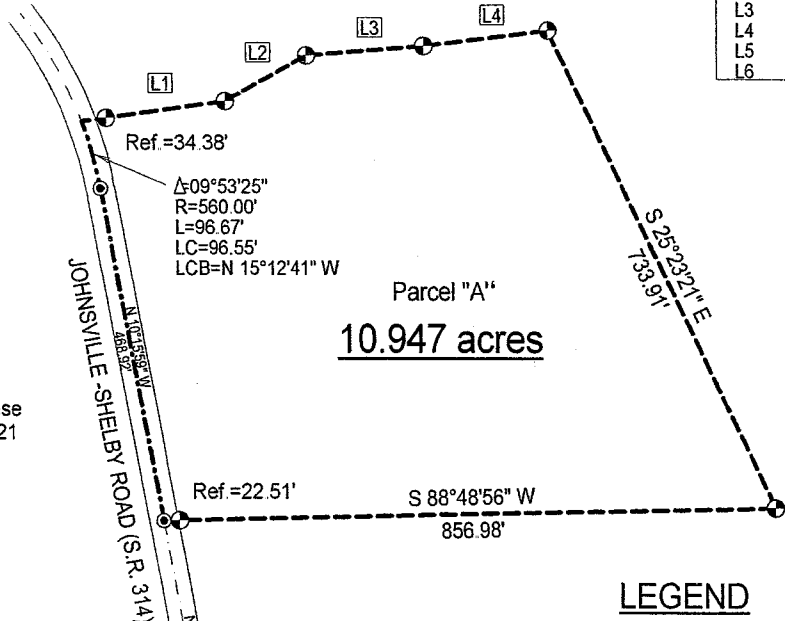
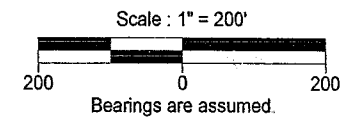
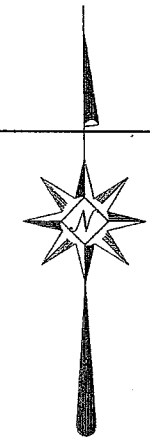


SURVEY PLAT

Parts NE Quarter and SE Quarter - Section 29
 Sharon Township, T-22, R-19
 Richland County, Ohio

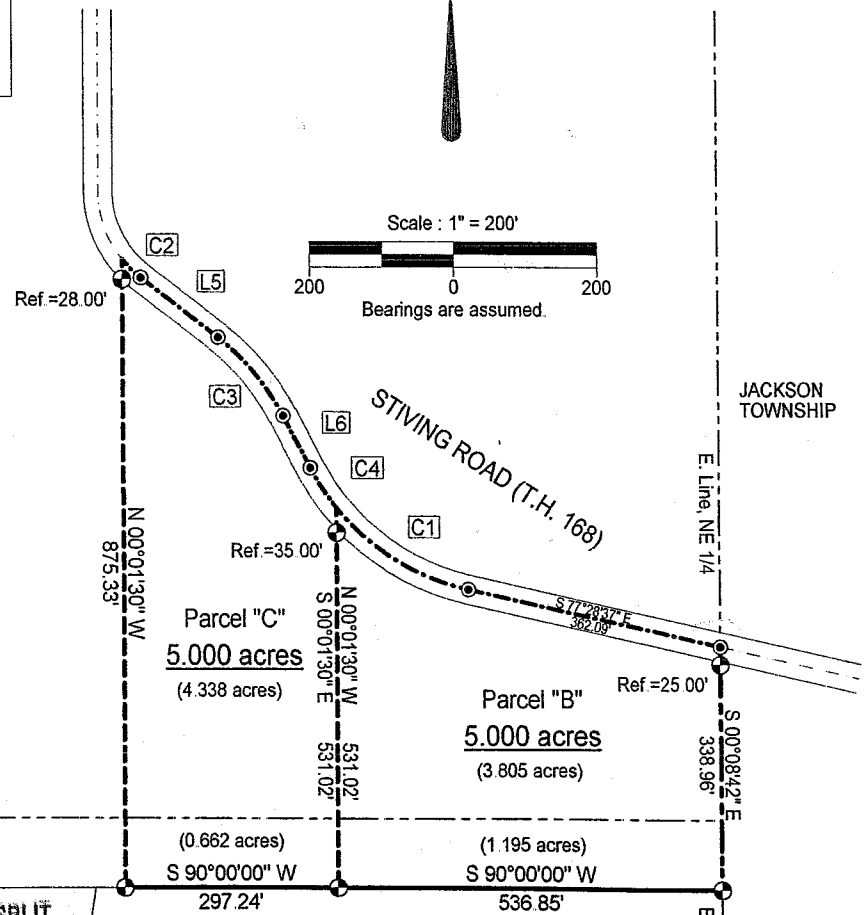
| Curve Table | | | | | |
|-------------|-----------|---------|------------|---------|---------------|
| Id | Delta | Radius | Arc Length | Chord | Ch Bear |
| C1 | 38°39'37" | 325.00' | 219.29' | 215.16' | S 58°08'48" E |
| C2 | 13°52'56" | 150.00' | 36.34' | 36.25' | S 45°30'27" E |
| C3 | 25°11'07" | 325.00' | 142.86' | 141.71' | S 39°51'19" E |
| C4 | 11°33'12" | 325.00' | 65.53' | 65.42' | S 33°02'23" E |

| Line Table | | |
|------------|---------------|----------|
| Id | Bearing | Distance |
| L1 | N 81°58'46" E | 200.80' |
| L2 | N 60°44'25" E | 129.99' |
| L3 | N 85°30'43" E | 164.87' |
| L4 | N 82°54'19" E | 175.76' |
| L5 | S 52°26'53" E | 135.84' |
| L6 | S 27°15'47" E | 81.53' |



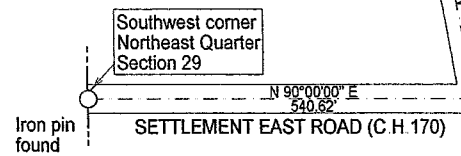
Parcel "A"
 10.947 acres

D.L. King, et. al.
 ORV 1217/223



LEGEND

- ⊕ Iron pin set with cap stamped "CLANCY 7178"
- ⊙ Mag-nail set



J & B. Nothacker
 724/294

NEW SPLIT
 RICHLAND COUNTY
 TAX MAP OFFICE
 MRC 12804
 INITIAL DATE

MWT Asset Mgmt. Trust
 ORV 527/920

Warne R. Clancy
 P.S. #7178

Alan Kempf
 Sharon Township
 ZONING INSPECTOR

DATE: 12/16/03
 JOB NO.: W101103B

102.S

S-201

SURVEY DESCRIPTION

Part Northeast Quarter – Section 29
Sharon Township, T-22, R-19
Richland County, Ohio

Situated in the Township of Sharon, County of Richland, State of Ohio, and being a part of the Northeast Quarter of Section 29 of Township 22 of Range 19, more particularly described as follows:

Commencing for the same at an iron pin found marking the southwest corner of said northeast quarter; Thence, North 90 degrees 00 minutes 00 seconds East with the south line of said quarter, the same being the centerline of Settlement East Road (C.H. 170), a distance of 540.62 feet to a Mag-nail set marking its intersection with the centerline of the Johnsville – Shelby Road (S.R. 314), Thence, North 10 degrees 15 minutes 59 seconds West with the said S.R. 314 centerline, a distance of 395.99 feet to a Mag-nail set, the Place of Beginning;

Thence, continuing with said centerline North 10 degrees 15 minutes 59 seconds West, a distance of 468.92 feet to a Mag-nail set marking a point of curvature thereon;

Thence, continuing northwesterly with said centerline along a curve to the left, defined by a 09 degree 53 minute 25 second central angle, a 560.00 foot radius, a 96.67 foot arc, and a 96.55 foot chord which bears North 15 degrees 12 minutes 41 seconds West, to a point thereon;

Thence, North 81 degrees 58 minutes 46 seconds East, passing an iron pin set for reference at 34.38 feet, a distance of 200.80 feet to an iron pin set;

Thence, North 60 degrees 44 minutes 25 seconds East, a distance of 129.99 feet to an iron pin set;

Thence, North 85 degrees 30 minutes 43 seconds East, a distance of 164.87 feet to an iron pin set;

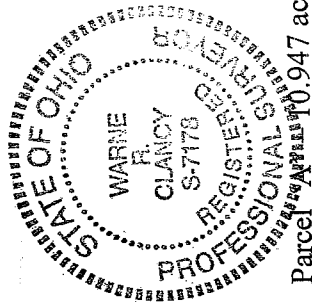
Thence, North 82 degrees 54 minutes 19 seconds East, a distance of 175.76 feet to an iron pin set;

Thence, South 25 degrees 23 minutes 21 seconds East, a distance of 733.91 feet to an iron pin set;

Thence, South 88 degrees 48 minutes 56 seconds West, passing an iron pin set for reference at 834.47 feet, a distance of 856.98 feet to the Place of Beginning, containing 10.947 acres according to survey by Warne R. Clancy, Professional Surveyor #7178, on October 11, 2003.

Iron pins set are #5 rebars with caps stamped "CLANCY 7178".

Bearings are assumed.



NEW SPLIT
RICHLAND COUNTY
TAX MAP OFFICE

MLB 128.04
INITIAL DATE

Warne R. Clancy
Warne R. Clancy
P.S. 7178

Allan Kempf
SHARON TOWNSHIP
ZONING INSPECTOR

9 2003

SURVEY DESCRIPTION

Parts NE Quarter and SE Quarter – Section 29
Sharon Township, T-22, R-19
Richland County, Ohio

Situated in the Township of Sharon, County of Richland, State of Ohio, and being parts of the Northeast Quarter and Southeast Quarter of Section 29 of Township 22 of Range 18, more particularly described as follows:

Beginning for the same at a Mag-nail set marking the intersection of east line of said northeast quarter with the centerline of Stiving Road (T.H. 168); Thence, South 00 degrees 08 minutes 42 seconds East with said east line, passing an iron pin set for reference at 25.00 feet, a distance of 338.96 feet to an iron pin set on the east line of said southeast quarter, the same being the northeast corner of a parcel owned by the MWT Asset Mgmt. Trust (ORV 527/920);

Thence, South 90 degrees 00 minutes 00 seconds West with the north line of said parcel, a distance of 536.85 feet to an iron pin set thereon;

Thence, North 00 degrees 01 minutes 30 seconds West, passing an iron pin set for reference at 496.02 feet, a distance of 531.02 feet to a point on the said Stiving Road centerline;

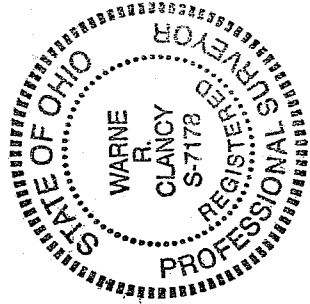
Thence, southeasterly with said centerline along a curve to the left, defined by 38 degree 39 minute 37 second central angle, a 325.00 foot radius, a 219.29 foot arc, and a 215.16 foot chord which bears South 58 degrees 08 minutes 48 seconds East, to a Mag-nail set marking its point of tangency thereon;

Thence, continuing with said centerline South 77 degrees 28 minutes 37 seconds East, a distance of 362.09 feet to the Place of Beginning, containing 5.000 acres, of which 3.805 acres lie in the said part of the northeast quarter and 1.195 in the said part of the southeast quarter according to survey by Warne R. Clancy, Professional Surveyor #7178, on December 15, 2003.

Iron pins set are #5 rebars with caps stamped "CLANCY 7178".

Bearings are assumed.

NEW SPLIT
RICHLAND COUNTY
TAX MAP OFFICE
MUB INITIAL 1-28-04 DATE



Parcel "B" – 5.000 ac.

Warne R. Clancy
Warne R. Clancy
P.S. 7178

Allen Kempf
Sharon Township
Zoning Inspector
S-201

S-201

SURVEY DESCRIPTION

Parts NE Quarter and SE Quarter – Section 29
Sharon Township, T-22, R-19
Richland County, Ohio

Situated in the Township of Sharon, County of Richland, State of Ohio, and being parts of the Northeast Quarter and Southeast Quarter of Section 29 of Township 22 of Range 18, more particularly described as follows:

Commencing for the same at a Mag-nail set marking the intersection of east line of said northeast quarter with the centerline of Stiving Road (T.H. 168); Thence, South 00 degrees 08 minutes 42 seconds East with said east line, passing an iron pin set for reference at 25.00 feet, a distance of 338.96 feet to an iron pin set on the east line of said southeast quarter, the same being the northeast corner of a parcel owned by the MWT Asset Mgmt. Trust (ORV 527/920); Thence, South 90 degrees 00 minutes 00 seconds West with the north line of said parcel, a distance of 536.85 feet to an iron pin set, the Place of Beginning;

Thence, continuing with said north line South 90 degrees 00 minutes 00 seconds West, a distance of 297.24 feet to an iron pin set thereon;

Thence, North 00 degrees 01 minutes 30 seconds West, passing an iron pin set for reference at 847.33 feet, a distance of 875.33 feet to a point on the said Stiving Road centerline;

Thence, southeasterly with said centerline along a curve to the left, defined by 13 degree 52 minute 56 second central angle, a 150.00 foot radius, a 36.34 foot arc, and a 36.25 foot chord which bears South 45 degrees 30 minutes 27 seconds East, to a Mag-nail set marking its point of tangency thereon;

Thence, continuing with said centerline South 52 degrees 26 minutes 53 seconds East, a distance of 135.84 feet to a Mag-nail set marking a point of curvature thereon;

Thence, continuing with said centerline southeasterly along a curve to the right, defined by a 25 degree 11 minute 07 second central angle, a 325.00 foot radius, an 142.86 foot arc, and an 141.71 foot chord which bears South 39 degrees 51 minutes 19 seconds East, to a Mag-nail set marking its point of tangency thereon;

Thence, continuing with said centerline South 27 degrees 15 minutes 47 seconds East, a distance of 81.53 feet to a Mag-nail set marking a point of curvature thereon;

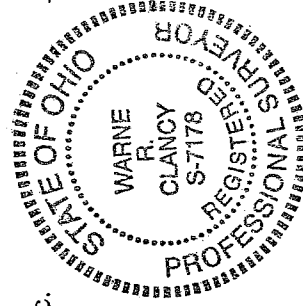
Thence, continuing with said centerline southeasterly along a curve to the left, defined by an 11 degree 33 minute 12 second central angle, a 325.00 foot radius, a 65.53 foot arc, and a 65.42 foot chord which bears South 33 degrees 02 minutes 23 seconds East, to a point thereon;

Thence, South 00 degrees 01 minutes 30 seconds East, passing an iron pin set for reference at 35.00 feet, a distance of 531.02 feet to the Place of Beginning, containing 5.000 acres, of which 4.338 acres lie in the said part of the northeast quarter and 0.662 in the said part of the southeast quarter according to survey by Warne R. Clancy, Professional Surveyor #7178, on December 15, 2003.

Iron pins set are #5 rebars with caps stamped "CLANCY 7178".

Bearings are assumed.

Parcel "C" – 5.000 ac.



Warne R. Clancy
Warne R. Clancy
P.S. 7178

Allan Kempf
Sharon Township
Zoning Inspector

NEW SPLIT
RICHLAND COUNTY
TAX MAP OFFICE

M.R.
INITIAL
1-28-04
DATE