

SURVEY PLAT

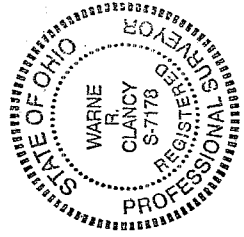
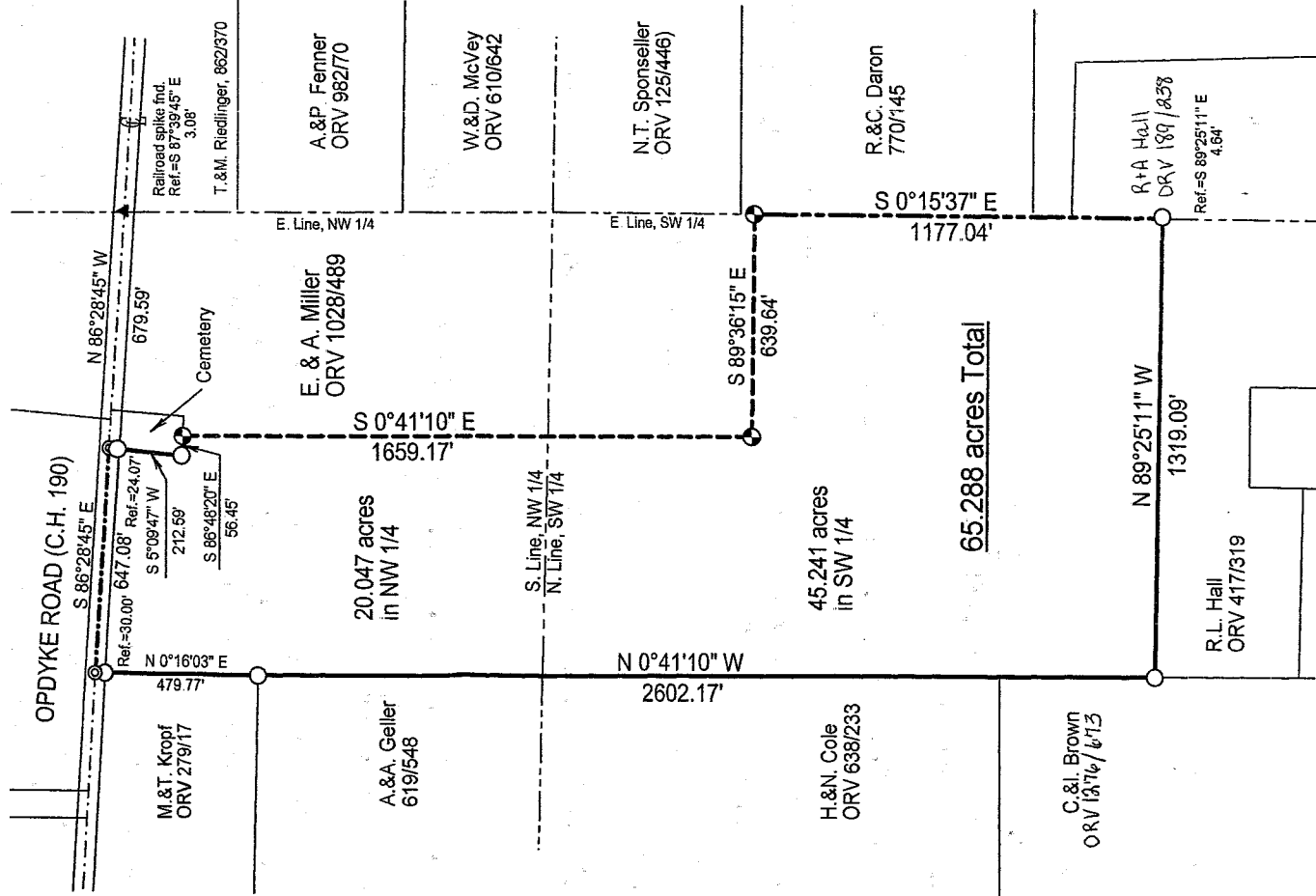
Parts NW and SW Quarters - Section 8
 Plymouth Township, T-23, R-19
 Richland County, Ohio



Scale: 1" = 400'



Bearings are based on ORV 298, page 275.



Warn R. Clancy
 Warn R. Clancy
 P.S. #7178

LEGEND

- Iron pin set with cap stamped "CLANCY 7178"
- Iron pin found
- ◎ Mag-nail found

NEW SPLIT
 RICHLAND COUNTY
 TAX MAP OFFICE

MLB (2-1-03)
 INITIAL DATE

DATE: 11/24/03
 JOB NO.: W102403

S-150

9,150

S-150

SURVEY DESCRIPTION

Parts NW and SW Quarters – Section 8
Plymouth Township, T-23, R-19
Richland County, Ohio

Situated in the Township of Plymouth, County of Richland, State of Ohio, and being parts of the Northwest Quarter and the Southwest Quarter of Section 8 of Township 23 of Range 19, more particularly described as follows:

Commencing for the same at the intersection of the east line of said northwest quarter with the centerline of Opdyke Road (C.H. 190), referenced by a Railroad spike found South 87 degrees 39 minutes 45 seconds East, a distance of 3.08 feet; Thence, North 86 degrees 28 minutes 45 seconds West with said centerline, a distance of 679.59 feet to a Mag-nail found marking the northwest corner of an existing cemetery, the Place of Beginning;

Thence, South 05 degrees 09 minutes 47 seconds West, passing an iron pin found for reference at 24.07 feet, a distance of 212.59 feet to an iron pin found marking the southwest corner of said cemetery;

Thence, South 86 degrees 48 minutes 20 seconds East with the south line of said cemetery, a distance of 56.45 feet to an iron pin set thereon;

Thence, South 00 degrees 41 minutes 10 seconds East, a distance of 1659.17 feet to an iron pin set;

Thence, South 89 degrees 36 minutes 15 seconds East, a distance of 639.64 feet to an iron pin set on the east line of said southwest quarter;

Thence, South 00 degrees 15 minutes 37 seconds East with said east line, a distance of 1177.04 feet to a point thereon referenced by an iron pin found South 89 degrees 25 minutes 11 seconds East, a distance of 4.64 feet;

Thence, North 89 degrees 25 minutes 11 seconds West, a distance of 1319.09 feet to an iron pin found marking the northwest corner of a parcel owned by R. L. Hall (ORV 417/319);

Thence, North 00 degrees 41 minutes 10 seconds West, a distance of 2602.17 feet to an iron pin found marking the southeast corner of a parcel owned by M. & T. Kropf (ORV 279/17);

Thence, North 00 degrees 16 minutes 03 seconds East with the east line of said parcel, passing an iron pin found for reference at 449.77 feet, a distance of 479.77 feet to a Mag-nail found on the said Opkye Road centerline;

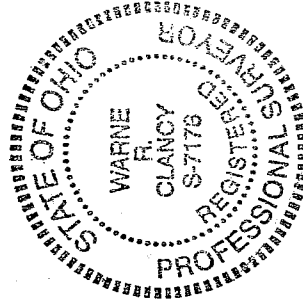
Thence, South 86 degrees 28 minutes 45 seconds East with said centerline, a distance of 647.08 feet to the Place of Beginning, containing 65.288 acres, of which 20.047 lie in the said part of the northwest quarter and 45.241 in the said part of the southwest quarter according to survey by Warne R. Clancy, Professional Surveyor #7178, on October 24, 2003.

Iron pins set are #5 rebars with caps stamped "CLANCY 7178".

Bearings are based on ORV 298, page 275.

NEW SPLIT
RICHLAND COUNTY
TAX MAP OFFICE

MLB 12-1-03
INITIAL DATE



Warne R. Clancy
Warne R. Clancy
P.S. 7178