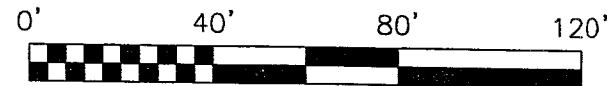


S-138

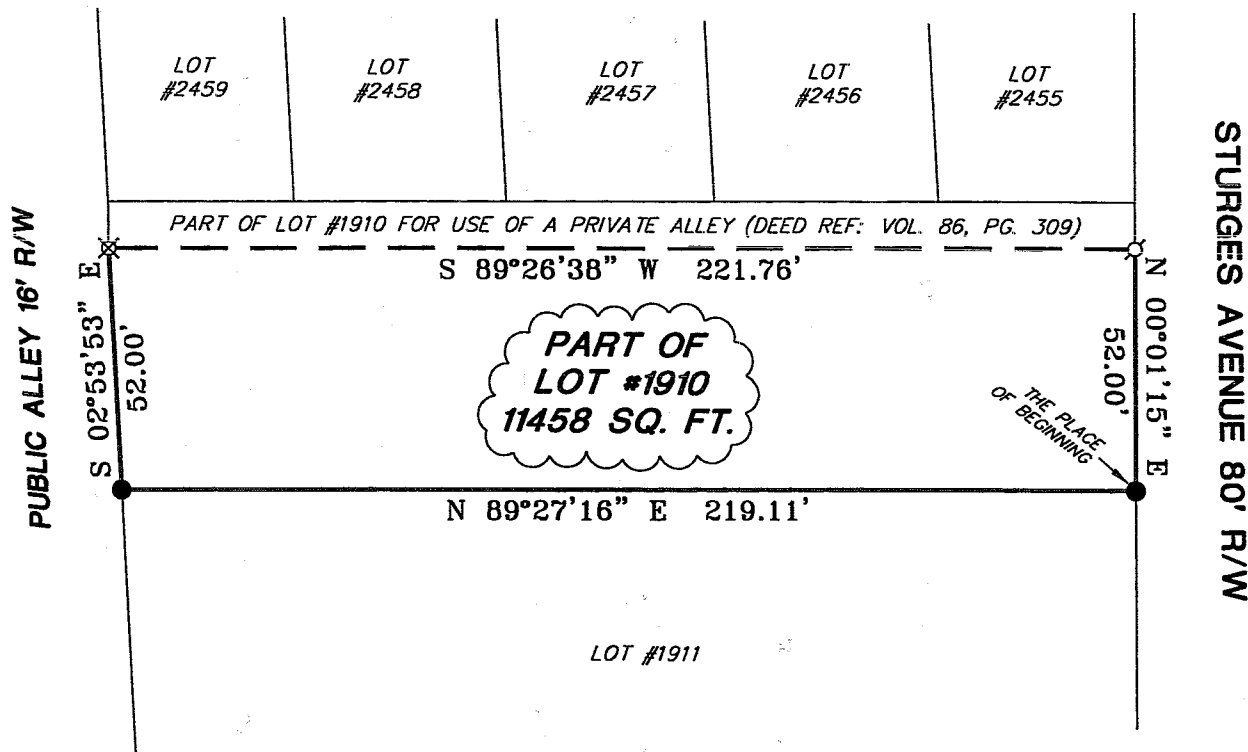
NORTH



BEARINGS ARE BASED ON AN ASSUMED MERIDIAN AND ARE INTENDED TO BE USED FOR ANGULAR DETERMINATION ONLY.



SCALE: 1" = 40'

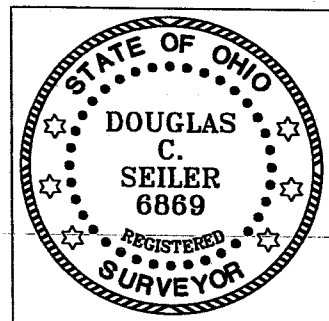


LEGEND

- IRON PIN FOUND
- ⊕ MAG NAIL SPIKE SET
- ⊗ IRON PIN SET WITH CAP STAMPED "SEILER 6869"

NEW SURVEY
OF EXISTING PARCEL
RICHLAND COUNTY
TAX MAP OFFICE

MLB 11-21-03
INITIAL DATE



SURVEYED BY: DOUGLAS C. SEILER
PROFESSIONAL SURVEYOR #6869
52-1/2 NORTH MAIN STREET
MANSFIELD, OHIO 44902
(419) 525-3644
FAX (419) 525-3696

SURVEY PLAT FOR	
PROPERTY TRANSFER	
PART OF LOT #1910	
CITY OF MANSFIELD	
OHIO	
DATE: NOVEMBER 18, 2003	SCALE: 1"=40'
TIMALX.DWG	

S-138

Douglas C. Seiler

Professional Land Surveyor

52½ North Main • Mansfield, Ohio 44902
(419) 525-3644

SURVEY DESCRIPTION

PART OF LOT #1910
CITY OF MANSFIELD, OHIO

Situated in the City of Mansfield, County of Richland, State of Ohio and being known as a part of Lot #1910 of the consecutively numbered lots in said city, and being more particularly described as follows:

Beginning for the same at an iron pin found and accepted as marking the southeast corner of said Lot #1910; Thence, North 00 degrees 01 minutes 15 seconds East with the east line of said lot, a distance of 52.00 feet to a Mag Nail spike set;

Thence, South 89 degrees 26 minutes 38 seconds West a distance of 221.76 feet to an iron pin set on the west line of said lot;

Thence, South 02 degrees 53 minutes 53 seconds East with said west line, a distance of 52.00 feet to an iron pin found and accepted as marking the southwest corner of said lot;

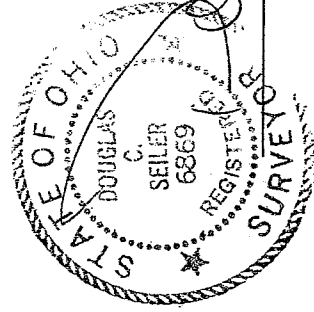
Thence, North 89 degrees 27 minutes 16 seconds East with the south line of said lot, a distance of 219.11 feet to the place of beginning, containing 11458 square feet, according to survey by Douglas C. Seiler, Professional Surveyor #6869 on November 17, 2003.

Iron pins set are 5/8" rods with caps stamped "SEILER 6869".

Bearings are based on an assumed meridian and are intended to be used for angular determination only.

NEW SURVEY
OF EXISTING PARCEL
RICHLAND COUNTY
TAX MAP OFFICE

MLB 11-21-03
INITIAL DATE



Douglas C. Seiler
Professional Surveyor #6869

S-138

S-138