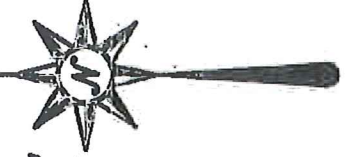




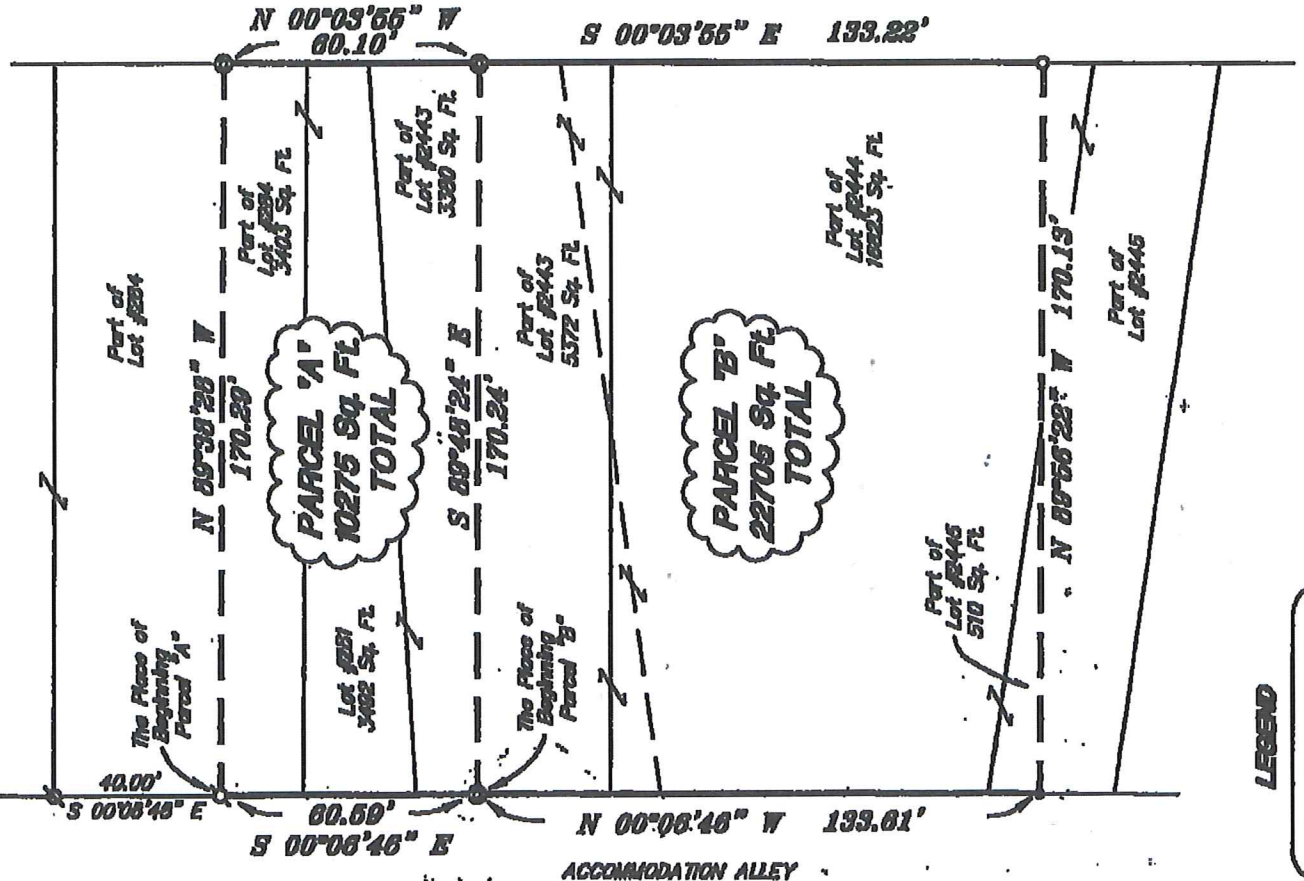
S-112

AVORON



NOTE: Parcel "A" is intended to be transferred to the contiguous owner of the property to the north.

**NORTH DIAMOND STREET**

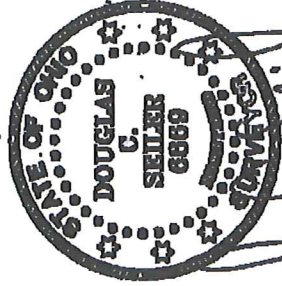


- LEGEND**
- ⊕ May Nail spikes, found
  - ⊙ May Nail spikes, set
  - drill hole, set
  - drill hole, found
  - Iron pin, found

NEW SPLIT  
RICHLAND COUNTY  
TAX MAP DEVICES  
MLB 11-10-03  
INITIAL DATE

NEW SPLIT  
RICHLAND COUNTY  
TAX MAP DEVICES  
MLB 11-10-03  
INITIAL DATE

**Zoning Approved**  
**City of Mansfield**  
 Date 5/9/19



*Douglas C. Selzer*

SURVEY BY: DOUGLAS C. SELZER  
PROFESSIONAL SURVEYOR #6869  
52-173 NORTH MAIN STREET  
MANSFIELD, OHIO 44902  
(419) 525-3844  
FAX (419) 525-3888

SURVEY PLAT FOR
G & L SUPPLY
PARTS OF LOTS #2444, #2445, #284, #2443, AND LOT #281 CITY OF MANSFIELD, OHIO
DATE: NOVEMBER 3, 2001
SCALE: 1"=40'
gml.dwg/.asc

# Douglas C. Seiler

Professional Land Surveyor

52½ North Main • Mansfield, Ohio 44902  
(419) 525-3644 • FAX (419) 525-3696

## SURVEY DESCRIPTION

### PARCEL "A"

PART OF LOT #284, PART OF LOT #2443,  
AND LOT #281, CITY OF MANSFIELD, OHIO

Situated in the City of Mansfield, County of Richland, State of Ohio and being a part of Lot #284, a part of Lot #2443 and Lot #281 of the consecutively numbered lots of said city, the entire tract being more particularly described as follows:

Commencing at a Mag Nail spike found and accepted as marking the northwest corner of said Lot #284; Thence, South 00 degrees 06 minutes 46 seconds East with the west line of said lot, the same being the east line of Accommodation Alley, a distance of 40.00 feet to a Mag Nail spike set, the place of beginning of the parcel herein described;

Thence, continuing South 00 degrees 06 minutes 46 seconds East with said east line of Accommodation Alley, a distance of 60.59 feet to a 5/8" drill hole in concrete, set;

Thence, South 89 degrees 48 minutes 24 seconds East a distance of 170.24 feet to a 5/8" drill hole in concrete set, said drill hole being located on the west line of North Diamond Street;

Thence, North 00 degrees 03 minutes 55 seconds West with said west line, a distance of 60.10 feet to a 5/8" drill hole in concrete set;

Thence, North 89 degrees 38 minutes 28 seconds West a distance of 170.29 feet to the place of beginning, containing a total of 10275 square feet, of which:

3403 square feet are located within part of said Lot #284,  
3492 square feet are located within said Lot #281, and  
3380 square feet are located within part of said Lot #2443,

according to survey by Douglas C. Seiler, Professional Surveyor #68869 on October 31, 2003.

The intent of this instrument is to describe the area needed to incorporate the existing masonry building on one parcel for transfer purposes.

Bearings are based on an assumed meridian and are intended to be used for angular determination only.

~~The grantee, his heirs and assigns do hereby covenant and agree that the parcel of land described by this instrument will not be conveyed by said grantee, heirs, or assigns independently from a contiguous parcel of land without the approval of the City of Mansfield Planning Commission.~~

NEW SPLIT  
RICHLAND COUNTY  
TAX MAP OFFICE  
MLB  
INITIAL  
11-10-03  
DATE

NEW SURVEY  
OF EXISTING PARCEL  
RICHLAND COUNTY  
TAX MAP OFFICE  
MLB  
INITIAL  
11-10-03  
DATE



Douglas C. Seiler  
Professional Surveyor #68869

SEE Dwg  
FOR FINAL  
APPROVAL

S-112

S-112

S-112

# Douglas C. Seiler

Professional Land Surveyor

52½ North Main • Mansfield, Ohio 44902  
(419) 525-3644 • FAX (419) 525-3696

## SURVEY DESCRIPTION

### PARCEL "B"

PART OF LOT #2443, PART OF LOT #2444,  
AND PART OF LOT #2445  
CITY OF MANSFIELD, OHIO

Situated in the City of Mansfield, County of Richland, State of Ohio and being a part of Lot #2443, a part of Lot #2444 and a part of Lot #2445 of the consecutively numbered lots of said city, the entire tract being more particularly described as follows:

Commencing at a Mag Nail spike found and accepted as marking the northwest corner of said Lot #284; Thence, South 00 degrees 06 minutes 46 seconds East with the west line of said lot, the same being the east line of Accommodation Alley, a distance of 100.59 feet to a 5/8" drill hole in concrete set, the place of beginning of the parcel herein described;

Thence, South 89 degrees 48 minutes 24 seconds East a distance of 170.24 feet to a 5/8" drill hole in concrete set, said drill hole being located on the west line of North Diamond Street;

Thence, South 00 degrees 03 minutes 55 seconds East with said west line, a distance of 133.22 feet to a drill hole in concrete, found;

Thence, North 89 degrees 56 minutes 22 seconds West a distance of 170.13 feet to an iron pin found on the west line of said Lot #2445, said iron pin also being located on the east line of Accommodation Alley;

Thence, North 00 degrees 06 minutes 46 seconds West with said east line, a distance of 133.61 feet to the place of beginning, containing a total of 22705 square feet, of which:

- 5372 square feet are located within part of said Lot #2443,
- 16823 square feet are located within part of said Lot #2444, and
- 510 square feet are located within part of said Lot #2445,

according to survey by Douglas C. Seiler, Professional Surveyor #68869 on October 31, 2003.

Bearings are based on an assumed meridian and are intended to be used for angular determination only.

NEW SURVEY  
OF EXISTING PARCEL  
RICHLAND COUNTY  
TAX MAP OFFICE

MSB 11-10-03  
INITIAL DATE



Douglas C. Seiler  
Professional Surveyor #68869

S-112