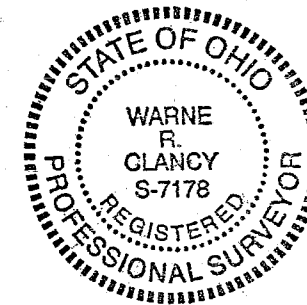
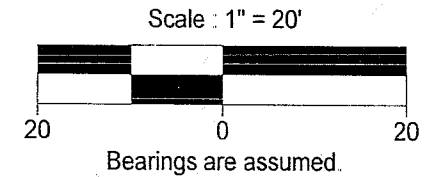
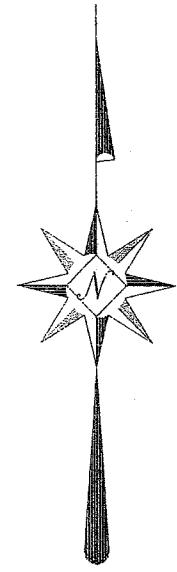
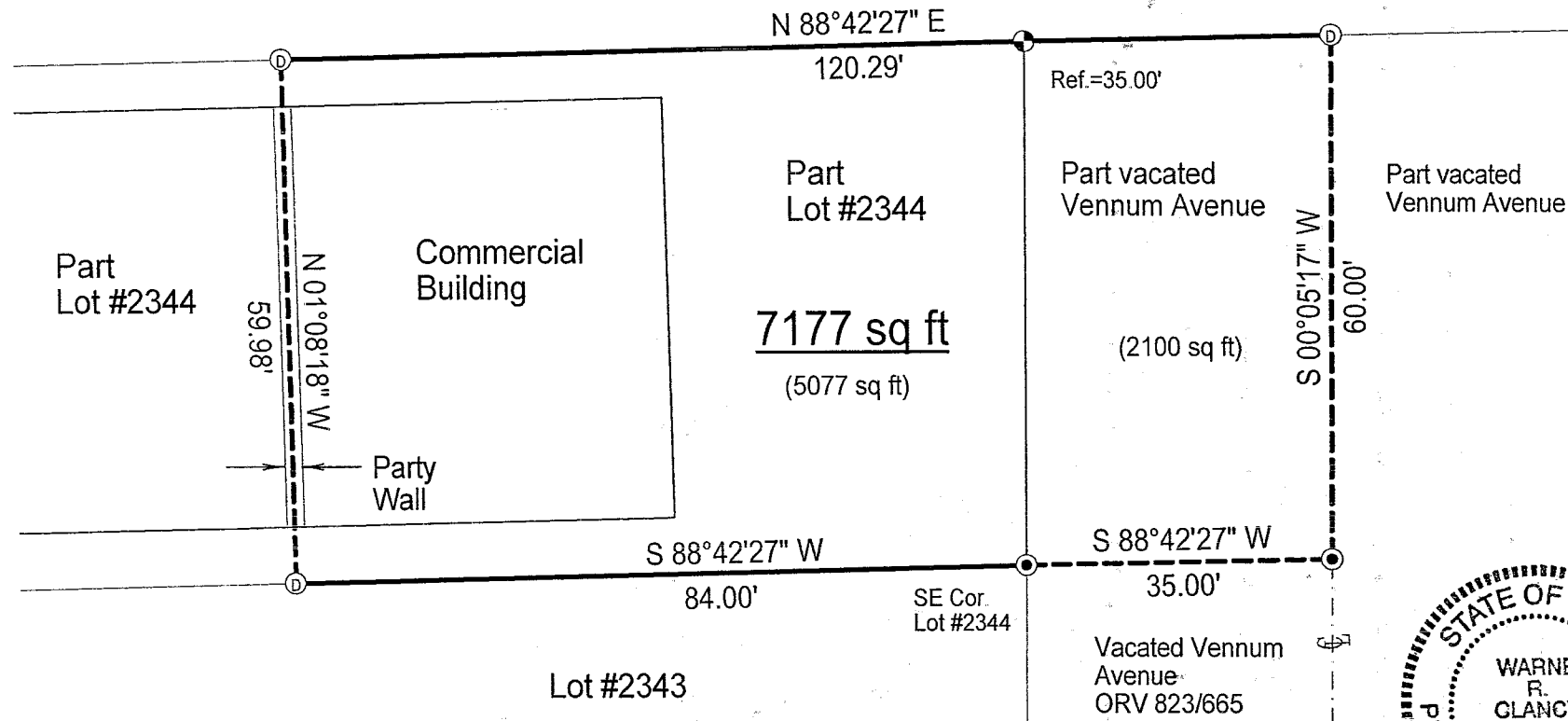


S-90

# SURVEY PLAT

Part of Lot #2344 and Part of Vacated Vennum Avenue  
City of Mansfield  
Richland County, Ohio

## GLESSNER AVENUE (60' R/W)



NEW SURVEY  
OF EXISTING PARCEL  
RICHLAND COUNTY  
TAX MAP OFFICE  
**MLB** 10-28-03  
INITIAL DATE

*Warne R. Clancy*  
Warne R. Clancy P.S. #7178

### LEGEND

- Iron pin set with cap stamped "CLANCY 7178"
- Ⓧ Drill hole set
- Ⓞ Mag-nail set

DATE: 10/22/03

JOB NO.: W091003

065

590

SURVEY DESCRIPTION

Part of Lot #2344 and Part of Vacated Vennum Avenue  
City of Mansfield  
Richland County, Ohio

Situated in the City of Mansfield, County of Richland, State of Ohio and being a part of Lot #2344 of the consecutively numbered lots of said City, and also being a part of vacated Vennum Avenue in said City, more particularly described as follows:

Beginning for the same at a Mag-nail set marking the southeast corner of said Lot #2344; Thence, South 88 degrees 42 minutes 27 seconds West with the south line of said lot, a distance of 84.00 feet to a Drill hole set thereon;

Thence, North 01 degrees 08 minutes 18 seconds West, a distance of 59.98 feet to a Drill hole set on the south right-of-way line of Glessner Avenue (60' R/W);

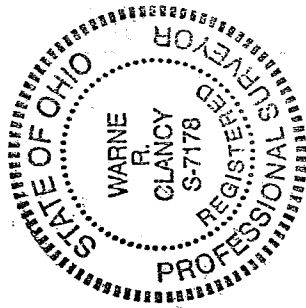
Thence, North 88 degrees 42 minutes 27 seconds East with said right-of-way line, passing an iron pin set for reference at 85.29 feet, a distance of 120.29 feet to a Drill hole set marking its intersection with the centerline of said vacated Vennum Avenue;

Thence, South 00 degrees 05 minutes 17 seconds West with said centerline, a distance of 60.00 feet to a Mag-nail set thereon;

Thence, South 88 degrees 42 minutes 27 seconds West, a distance of 35.00 feet to the Place of Beginning, containing 7,177 square feet, of which 5,077 lie in the said part of Lot #2344 and 2,100 in the said part of vacated Vennum Avenue according to survey by Warne R. Clancy, Professional Surveyor #7178, on September 10, 2003.

The iron pin set is a #5 rebar with a cap stamped "CLANCY 7178".

Bearings are assumed.



NEW SURVEY  
OF EXISTING PARCEL  
RICHLAND COUNTY  
TAX MAP OFFICE

WAR 10.28.03  
INITIAL DATE

*Warne R. Clancy*  
Warne R. Clancy  
P.S. 7178

590