

S-48

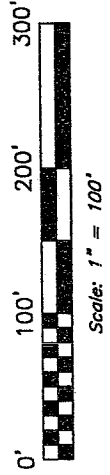
NORTH



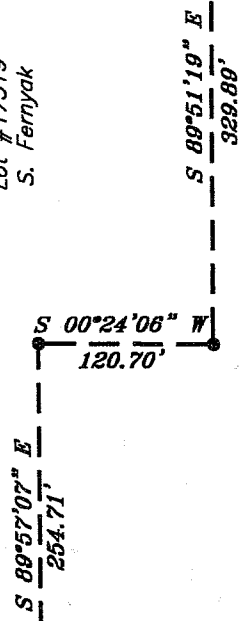
Bearings are based on an assumed meridian and are intended to be used for angular determination only.

LEGEND

- 5/8" iron pin with cap stamped
SEILER 6869, set
- iron pin found



Part of
Lot #17519
S. FERNYAK



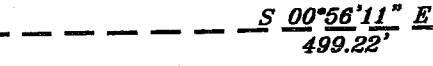
Lot #15166



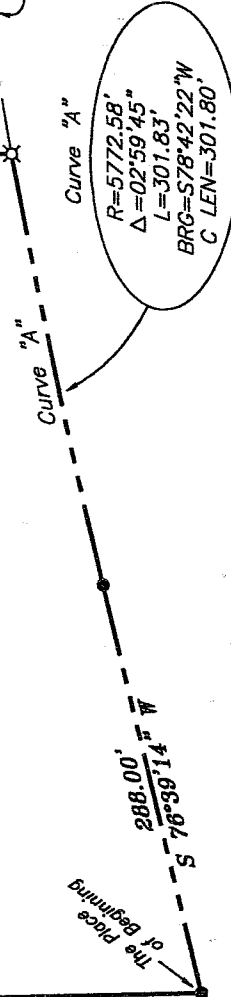
N 01°12'26" W
746.65'

**SURVEYED FOR TRANSFER
JONES INVESTMENT
TO
S. FERNYAK
PART OF LOT #17519
355,610 Sq. Ft. (8.16 ACRES)**

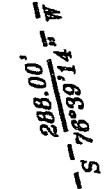
Part of
Lot #17519
Jones Investment



railroad right of way line

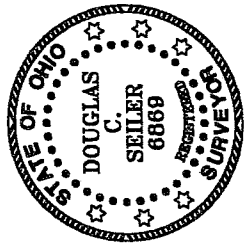


The Price of Beginning



NEW SPLIT
RICHLAND COUNTY
TAX MAP OFFICE

INITIAL *MLB* DATE 10-10-03



Douglas C. Seiler 10/03/03

SURVEY BY:
DOUGLAS C. SEILER
PROFESSIONAL SURVEYOR #6869
52 1/2 NORTH MAIN STREET
MANSFIELD, OHIO 44902
(419) 525-3644
FAX (419) 525-3696

SURVEY PLAT FOR	
BOB JONES	
PART OF LOT #17519	
CITY OF MANSFIELD	
OHIO	
DATE: OCT. 2, 2003	SCALE: 1"=100'
jonespc.dwg/.asc	

Douglas C. Seiler

Professional Land Surveyor

52½ North Main • Mansfield, Ohio 44902
(419) 525-3644 • FAX (419) 525-3696

SURVEY DESCRIPTION

PART OF LOT #17519
CITY OF MANSFIELD, OHIO

Situated in the City of Mansfield, County of Richland, State of Ohio and being a part of Lot #17519 of the consecutively numbered lots in said city, and being more particularly described as follows:

Beginning for the same at an iron pin found and accepted as marking the southwest corner of said Lot; Thence, North 01 degree 12 minutes 26 seconds West with the west line of said lot, a distance of 746.65 feet to an iron pin found;

Thence, South 89 degrees 57 minutes 07 seconds East a distance of 254.71 feet to an iron pin found;

Thence, South 00 degrees 24 minutes 06 seconds West a distance of 120.70 feet to an iron pin found;

Thence, South 89 degrees 51 minutes 19 seconds East a distance of 329.89 feet to an iron pin set;

Thence, South 00 degrees 56 minutes 11 seconds East a distance of 499.22 feet to an iron pin set on the south line of said lot;

Thence, southwesterly with said south line, along a curve concave to the south with a central angle of 02 degrees 59 minutes 45 seconds, a radius of 5772.58 feet, an arc length of 301.83 feet, a chord distance of 301.80 feet with a chord bearing of South 78 degrees 42 minutes 22 seconds West to an iron pin found;

Thence, continuing with said southerly line, South 76 degrees 39 minutes 14 seconds West, a distance of 288.00 feet to the place of beginning, containing 355,610 square feet (8.16 acres), according to survey by Douglas C. Seiler, Professional Surveyor #6869 on October 1, 2003.

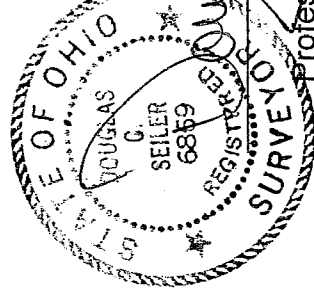
The grantee, his heirs and assigns do hereby covenant and agree that the parcel of land described by this instrument will not be conveyed by said grantee, heirs, or assigns independently from a contiguous parcel of land with road frontage, without the approval of the City of Mansfield Planning Commission.

Iron pins set are 5/8" rods with caps stamped "SEILER 6869".

Bearings are based on an assumed meridian and are intended to be used for angular determination only.

NEW SPLIT
RICHLAND COUNTY
TAX MAP OFFICE

MLC 10-10-03
INITIAL DATE



Douglas C. Seiler
Professional Surveyor #6869