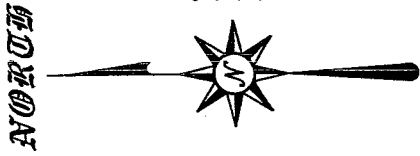
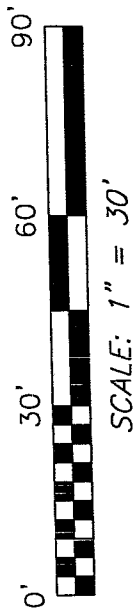
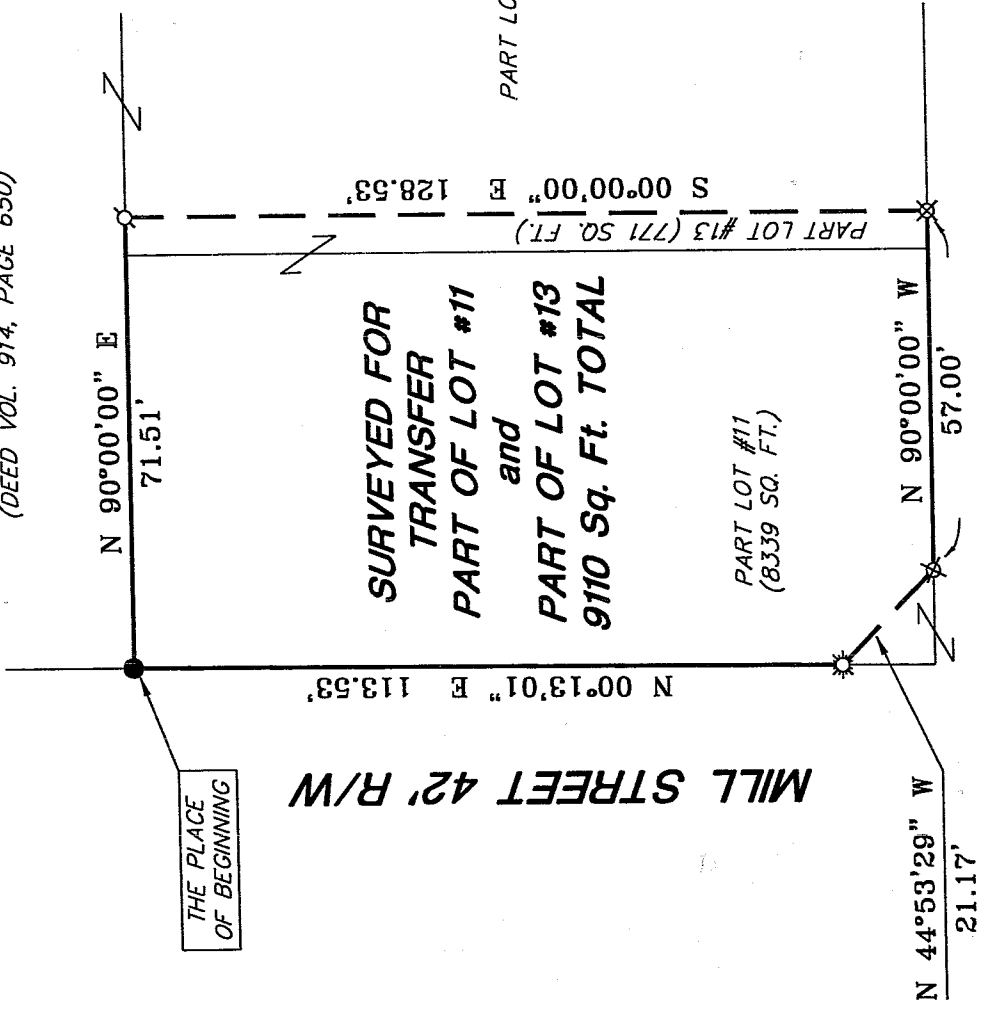


B-187



BEARINGS ARE BASED ON
AN ASSUMED MERIDIAN AND
ARE INTENDED TO BE USED
FOR ANGULAR DETERMINATION
ONLY.

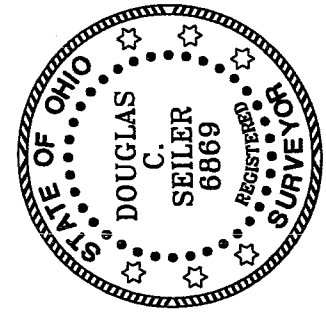
VILLAGE OF LEXINGTON
(DEED VOL. 914, PAGE 650)



LEGEND

- IRON PIN FOUND
- ⊕ MAG NAIL SET
- ⊛ DRILL HOLE IN CONCRETE SET
- ⊗ 5/8" IRON PIN WITH CAP STAMPED "SEILER 6869" SET

NEW SURVEY
OF EXISTING PARCEL
RICHLAND COUNTY
TAX MAP OFFICE
EAS 6-19-03
INITIAL DATE



Douglas C. Seiler 6/13/03
 SURVEYED BY: DOUGLAS C. SEILER
 PROFESSIONAL SURVEYOR #6869
 52-172 NORTH MAIN STREET
 MANSFIELD, OHIO 44902
 (419) 525-3644
 FAX (419) 525-3696

SURVEY PLAT FOR
PROPERTY TRANSFER
PART OF LOT #11 AND PART OF LOT #13 VILLAGE OF LEXINGTON OHIO
DATE: JUNE 5, 2003 SCALE: 1"=30'
53MAINLX.DWG

187

Douglas C. Seiler

Professional Land Surveyor

52½ North Main • Mansfield, Ohio 44902
(419) 525-3644 • FAX (419) 525-3696

SURVEY DESCRIPTION

PART OF LOT #11, and
PART OF LOT #13
VILLAGE OF LEXINGTON, OHIO

Situated in the Village of Lexington, County of Richland, State of Ohio and being known as a part of Lot #11 and a part of Lot #13 of the consecutively numbered lots in said village, and being more particularly described as follows:

Beginning for the same at an iron pin found and accepted as marking the northwest corner of said Lot #11; Thence, North 90 degrees 00 minutes 00 seconds East with the north line of said lot and the easterly prolongation thereof, a distance of 71.51 feet to a Mag Nail spike set;

Thence, South 00 degrees 00 minutes 00 seconds East a distance of 128.53 feet to an iron pin set on the north line of Main Street;

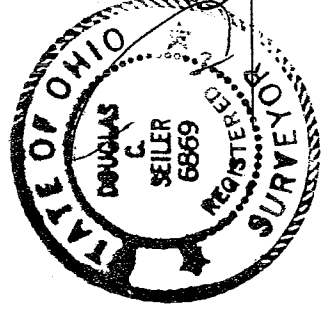
Thence, North 90 degrees 00 minutes 00 seconds West with said north line, a distance of 57.00 feet to an iron pin set;

Thence, North 44 degrees 53 minutes 29 seconds West with a line of Main Street, a distance of 21.17 feet to a drill hole set in concrete on the east line of Mill Street;

Thence, North 00 degrees 13 minutes 01 seconds East with said east line, a distance of 113.53 feet to the place of beginning, containing a total of 9110 square feet, of which 8339 square feet are located within part of said Lot #11, and 771 square feet are located within part of said Lot #13, according to survey by Douglas C. Seiler, Professional Surveyor #6869 on June 5, 2003.

Iron pins set are 5/8" rods with caps stamped "SEILER 6868".

Bearings are based on an assumed meridian and are intended to be used for angular determination only.



Douglas C. Seiler
Professional Surveyor #6869

NEW SURVEY
OF EXISTING PARCEL
RICHLAND COUNTY
TAX MAP OFFICE
PAK 6-9-03
INITIAL DATE

R-187

R-87