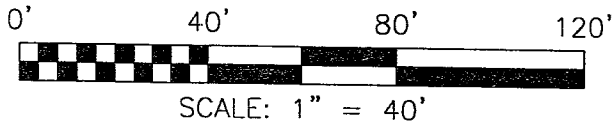


B-152



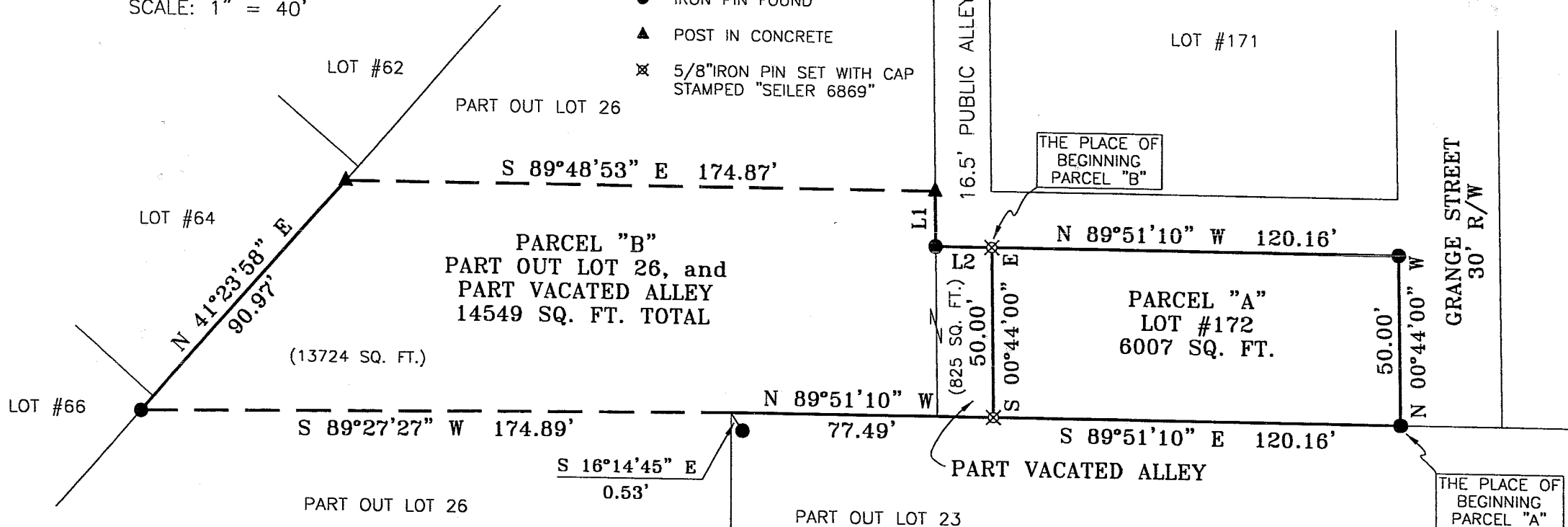
LEGEND

- IRON PIN FOUND
- ▲ POST IN CONCRETE
- ⊗ 5/8" IRON PIN SET WITH CAP STAMPED "SEILER 6869"

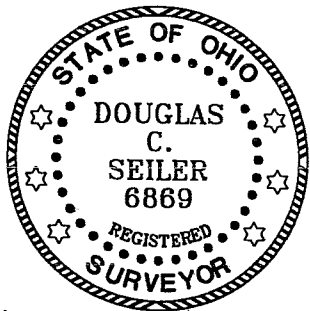
NORTH



BEARINGS ARE BASED ON SURVEY M-180



LINE	BEARING	DISTANCE
L1	S 00°44'00" E	16.18'
L2	S 89°51'10" E	16.50'



Douglas C. Seiler
5/22/03

SURVEY BY: DOUGLAS C. SEILER
PROFESSIONAL SURVEYOR #6869
52 1/2 NORTH MAIN STREET
MANSFIELD, OHIO 44902
(419) 525-3644
FAX (419) 525-3696

NEW SURVEY
OF EXISTING PARCEL
RICHLAND COUNTY
TAX MAP OFFICE

EAK 5/28/03
INITIAL DATE

SURVEY PLAT FOR	
SHARROCK	
LOT #172, PART OUT LOT 26 AND PART VACATED ALLEY, VILLAGE OF LEXINGTON RICHLAND COUNTY, OHIO	
DATE: MAY 20, 2003	SCALE: 1"=40'
LOT172	

B-152

Douglas C. Seiler

Professional Land Surveyor

52½ North Main • Mansfield, Ohio 44902
(419) 525-3644 • FAX (419) 525-3696

SURVEY DESCRIPTION

PARCEL "A"

LOT #172
VILLAGE OF LEXINGTON
OHIO

Situated in the Village of Lexington, County of Richland, State of Ohio and being known as Lot #172 of the consecutively numbered lots in said village, more particularly described as follows:

Beginning for the same at an iron pin found and accepted as marking the southeast corner of said lot; Thence, North 00 degrees 44 minutes 00 seconds West with the east line of said lot, a distance of 50.00 feet to an iron pin found and accepted as marking the northeast corner of said lot;

Thence, North 89 degrees 51 minutes 10 seconds West with the north line of said lot, a distance of 120.16 feet to an iron pin set marking the northwest corner thereof;

Thence, South 00 degrees 44 minutes 00 seconds East with the west line of said lot, a distance of 50.00 feet to an iron pin set marking the southwest corner thereof;

Thence, South 89 degrees 51 minutes 10 seconds East with the south line of said lot, a distance of 120.16 feet to the place of beginning, containing 6007 square feet, according to survey by Douglas C. Seiler, Professional Surveyor #6869 on May 20, 2003.

Iron pin set are 5/8" rods with caps stamped "SEILER 6869".

Bearings are based on Survey M-180 on file at the Richland County Tax Map Office, and are intended to be used for angular determination only.



Douglas C. Seiler
Professional Surveyor #6869

NEW SURVEY
OF EXISTING PARCEL
RICHLAND COUNTY
TAX MAP OFFICE

INITIAL DAK DATE 5-28-03

R-152

R-152

Douglas C. Seiler

Professional Land Surveyor

52½ North Main • Mansfield, Ohio 44902
(419) 525-3644 • FAX (419) 525-3696

SURVEY DESCRIPTION

PARCEL "B"

PART OF OUT LOT 26,
and PART OF A VACATED ALLEY
VILLAGE OF LEXINGTON, OHIO

Situated in the Village of Lexington, County of Richland, State of Ohio and being a part of Out Lot 26 and a part of a vacated alley in said village, the entire tract being more particularly described as follows:

Beginning for the same at an iron pin set marking the northwest corner of Lot #172 in said Village; Thence, South 00 degrees 44 minutes 00 seconds East with the west line of said lot, a distance of 50.00 feet to an iron pin set marking the southwest corner thereof;

Thence, North 89 degrees 51 minutes 10 seconds West a distance of 77.49 feet to a point as referenced by an iron pin found on a bearing of South 16 degrees 14 minutes 45 seconds East and at a distance of 0.53 of a foot from said point;

Thence, South 89 degrees 27 minutes 27 seconds West a distance of 174.89 feet to an iron pin found on the east line of Lot #66 in said village;

Thence, North 41 degrees 23 minutes 58 seconds East with said east line and the northeasterly prolongation thereof, a distance of 90.97 feet to a post in concrete found and accepted as marking an existing property corner;

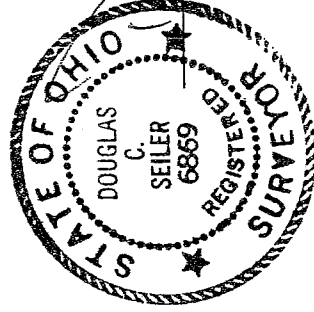
Thence, South 89 degrees 48 minutes 53 seconds East with an existing property line, a distance of 174.87 feet to a post in concrete found and accepted as marking an existing property corner, said post being located on the west line of a 16.5' public alley;

Thence, South 00 degrees 44 minutes 00 seconds East with said west line, a distance of 16.18 feet to an iron pin found;

Thence, South 89 degrees 51 minutes 10 seconds East a distance of 16.50 feet to the place of beginning, containing a total of 14549 square feet, of which 825 square feet are located within part of said vacated alley, and 13724 square feet are located within part of said Out Lot 26, according to survey by Douglas C. Seiler, Professional Surveyor #68869 on May 20, 2003.

Iron pin set are 5/8" rods with caps stamped "SEILER 68869".

Bearings are based on Survey M-180 on file at the Richland County Tax Map Office, and are intended to be used for angular determination only.



Douglas C. Seiler
Professional Surveyor #68869

NEW SURVEY
OF EXISTING PARCEL
RICHLAND COUNTY
TAX MAP OFFICE

DAK 5-28-03
INITIAL DATE

R-152

R-152