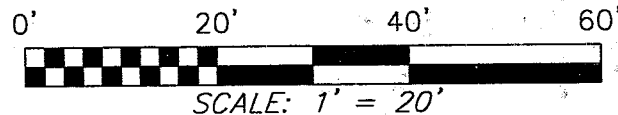


R-36



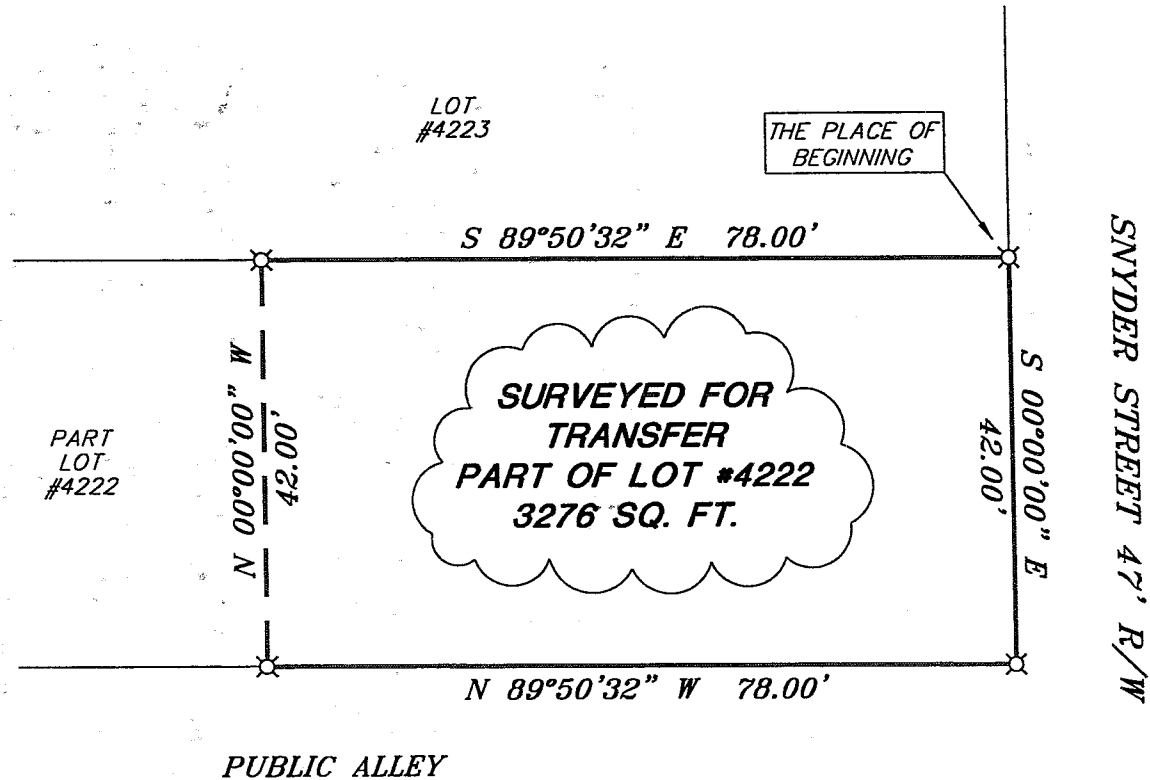
NORTH



LEGEND

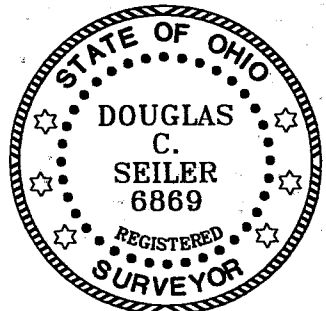
⊗ - IRON PIN SET WITH A PLASTIC CAP STAMPED "SEILER 6869"

BEARINGS ARE BASED ON AN ASSUMED MERIDIAN AND ARE INTENDED TO BE USED FOR ANGULAR DETERMINATION ONLY.



Douglas C. Seiler

SURVEYED BY: DOUGLAS C. SEILER
 PROFESSIONAL SURVEYOR #6869
 52-1/2 NORTH MAIN STREET
 MANSFIELD, OHIO 44902
 (419) 525-3644
 FAX (419) 525-3696



NEW SURVEY ✓
 OF EXISTING PARCEL
 RICHLAND COUNTY
 TAX MAP OFFICE
 FAX 3-17-03
 INITIAL DATE

SURVEY PLAT FOR	
PROPERTY TRANSFER	
PART OF LOT #4222	
CITY OF MANSFIELD	
OHIO	
DATE: MARCH 4, 2003	SCALE: 1"=20'
119snyd.dwg	

Douglas C. Seiler

Professional Land Surveyor

52½ North Main • Mansfield, Ohio 44902
(419) 525-3644 • FAX (419) 525-3696

SURVEY DESCRIPTION

PART OF LOT #4222
CITY OF MANSFIELD, OHIO

Situated in the City of Mansfield, County of Richland, State of Ohio and being a part of Lot #4222 of the consecutively numbered lots in said city, more particularly described as follows:

Beginning for the same at an iron pin set marking the northeast corner of said lot; Thence, South 00 degrees 00 minutes 00 seconds East with the east line of said lot, a distance of 42.00 feet to an iron pin set marking the southeast corner thereof;

Thence, North 89 degrees 50 minutes 32 seconds West with the south line of said lot, a distance of 78.00 feet to an iron pin set;

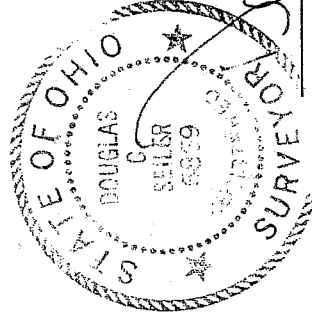
Thence, North 00 degrees 00 minutes 00 seconds West a distance of 42.00 feet to an iron pin set on the north line of said lot;

Thence, South 89 degrees 50 minutes 32 seconds East with said north line, a distance of 78.00 feet to the place of beginning, containing 3276 square feet, according to survey by Douglas C. Seiler, Professional Surveyor #68869 on February 28, 2003.

Iron pins set are 5/8" rods with caps stamped "SEILER 68869".

Bearings are based on an assumed meridian and are intended to be used for angular determination only.

NEW SURVEY
OF EXISTING PARCEL
RICHLAND COUNTY
TAX MAP OFFICE
PAK 3-17-03
INITIAL DATE



Douglas C. Seiler
Professional Surveyor #68869

R-36

R-36