



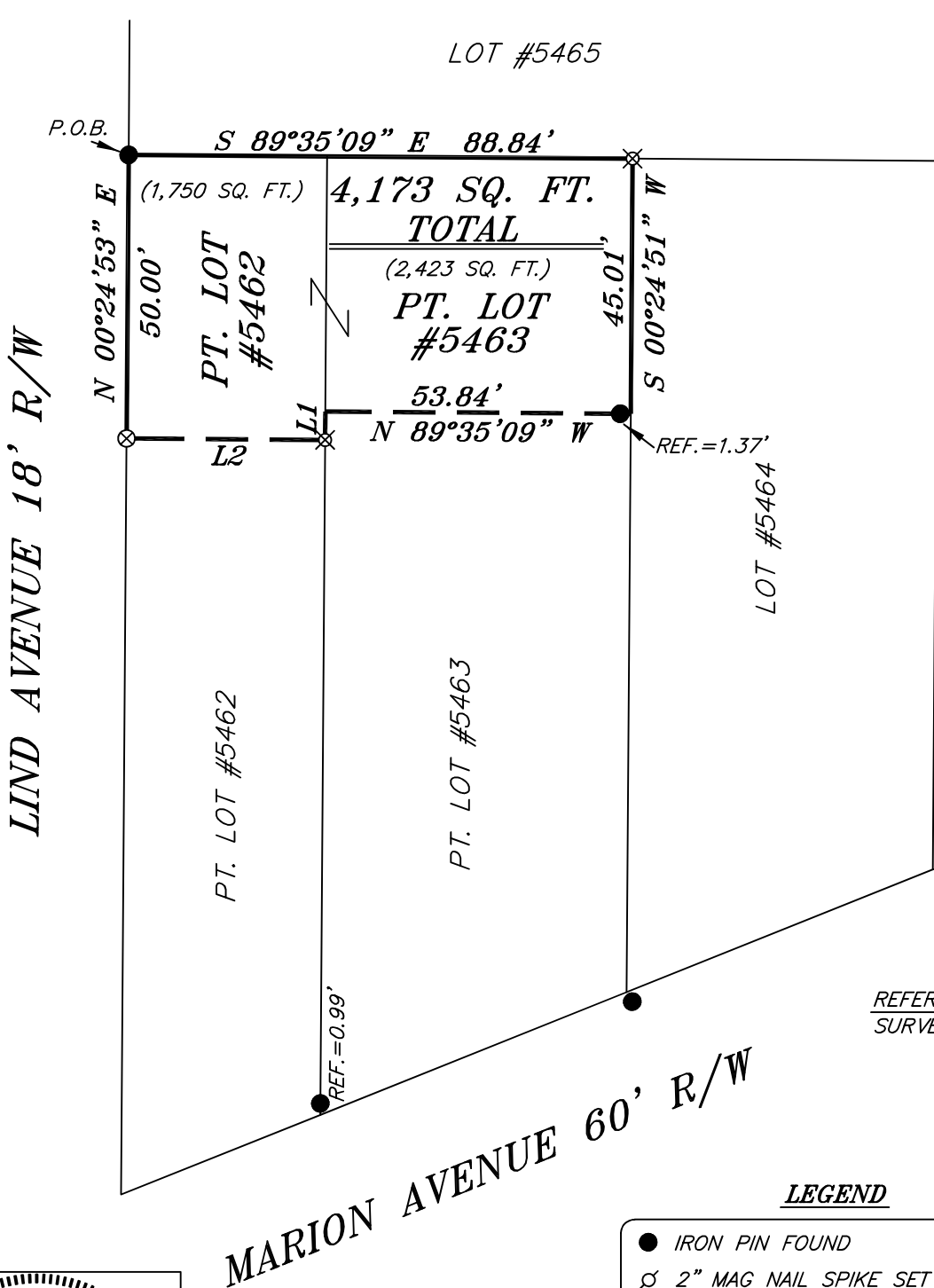
SCALE: 1" = 30'

NORTH



BASIS OF BEARING IS STATE PLANE
GRID NORTH NAD 83 (2011), GEOID
18A, OHIO NORTH ZONE.

LINE	BEARING	DISTANCE
L1	S 00°24'46" W	5.00'
L2	N 89°34'26" W	35.00'



REFERENCE MATERIALS USED:
SURVEY: 00-271

LEGEND

- IRON PIN FOUND
- ⊗ 2" MAG NAIL SPIKE SET
- ⊗ 3" SURVEY MARKER SET
- △ RAILROAD SPIKE SET
- FENCE POST FOUND
- ⊗ 5/8" IRON PIN SET WITH CAP STAMPED "CRAIG 8195"



NEW SURVEY
OF EXISTING PARCEL
RICHLAND COUNTY
TAX MAP OFFICE

EAK 2-22-23

INITIAL & DATE

PP-44

Chad F. Craig

SURVEY BY: CHAD F. CRAIG P.S. #8195
for SEILER & CRAIG SURVEYING INC.
270 PARK AVENUE WEST
MANSFIELD, OHIO 44902
(419) 525-3644
EMAIL:SEILERANDCRAIG@SEILERANDCRAIG.COM

SURVEY PLAT FOR	
PROPERTY TRANSFER	
PART LOTS #5462 & #5463 CITY OF MANSFIELD, RICHLAND COUNTY, OHIO	
DATE: JANUARY 31, 2023	SCALE: 1"=30'
LIND_AVE_49	

SURVEY DESCRIPTION

PART LOTS #5462 & #5463
CITY OF MANSFIELD,
RICHLAND COUNTY, OHIO

Situated in the City of Mansfield, County of Richland, State of Ohio and being known as part Lot #5462 and part Lot #5463 of the consecutively numbered lots in said city and being more particularly described as follows:

Beginning for the same at an iron pin found and accepted as marking the northwest corner of Lot #5462, Thence, South 89 degrees 35 minutes 09 seconds East with the north line of said lot and the easterly prolongation thereof, 88.84 feet to an iron pin set on the northeast corner of Lot #5463;

Thence, South 00 degrees 24 minutes 51 seconds West with the east line of said lot 45.01 feet to a point referenced by an iron pin found on a bearing of North 89 degrees 35 minutes 09 seconds West and at a distance of 1.37 feet;

Thence, North 89 degrees 35 minutes 09 seconds West passing through said iron pin found, a total distance of 53.84 feet to a point in concrete on the west line of said lot and being referenced by an iron pin set on a bearing of South 00 degrees 24 minutes 46 seconds West and at a distance of 5.00 feet;

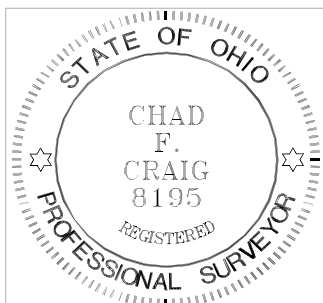
Thence, South 00 degrees 24 minutes 46 seconds West with the west line of said lot 5.00 feet to an iron pin set;

Thence, North 89 degrees 34 minutes 26 seconds West 35.00 feet to a 3 inch survey marker set in pavement on the west line of Lot #5462;

Thence, North 00 degrees 24 minutes 53 seconds East with the west line of said lot 50.00 feet to the place of beginning, containing a total of 4,173 square feet, of which 1,750 square feet are in Part Lot #5462 and 2,423 square feet are in Part Lot #5463, according to survey by Chad F. Craig P.S. 8195 on January 31, 2023, but subject to all easements, right of ways and highways of record.

Iron pins set are 5/8" rods with caps stamped "CRAIG 8195".

Bearings are based on State Plane Grid North NAD 83 (2011), Geoid 18A, Ohio North Zone and are intended to be used for angular determination only.



NEW SURVEY
OF EXISTING PARCEL
RICHLAND COUNTY
TAX MAP OFFICE
EAK 2-22-23
INITIAL & DATE
PP-44

A handwritten signature in black ink that reads "Chad F. Craig".

Chad F. Craig P.S. #8195
Seiler and Craig Surveying, Inc.