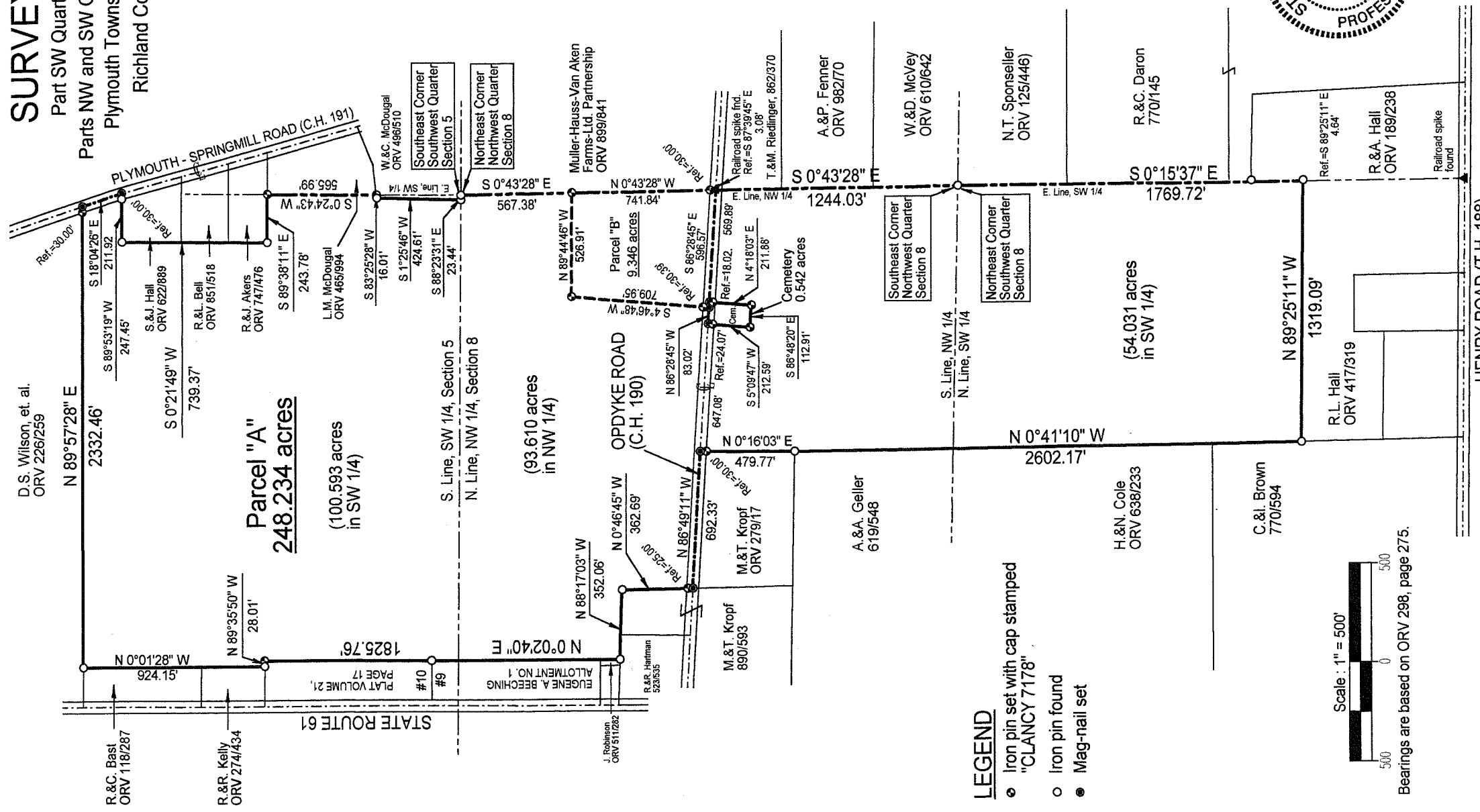


# SURVEY PLAT

Part SW Quarter - Section 5  
 Parts NW and SW Quarters - Section 8  
 Plymouth Township, T-23, R-19  
 Richland County, Ohio

D.S. Wilson, et. al.  
 ORV 226/259



**Parcel "A"**  
**248.234 acres**

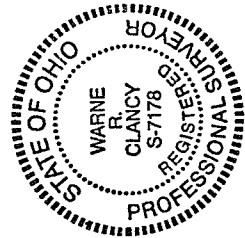
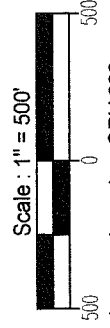
(100.593 acres  
 in SW 1/4)

(93.610 acres  
 in NW 1/4)

(54.031 acres  
 in SW 1/4)

## LEGEND

- Iron pin set with cap stamped "CLANCY 7178"
- Iron pin found
- Mag-nail set



NEW SPLIT  
 RICHLAND COUNTY  
 TAX MAP OFFICE  
 INITIAL DATE: 2/15/02

NEW SURVEY  
 OF EXISTING PARCEL  
 RICHLAND COUNTY  
 TAX MAP OFFICE  
 INITIAL DATE: 2/15/02

DATE: 2/11/02  
 JOB NO.: W020202

Warne R. Clancy  
 Warne R. Clancy  
 P.S. #1718

P-159

**SURVEY DESCRIPTION**

**Part Southwest Quarter - Section 5  
Parts Northwest and Southwest Quarters - Section 8  
Plymouth Township, T-23, R-19  
Richland County, Ohio**

Situated in the Township of Plymouth, County of Richland, State of Ohio, and being a part of the Southwest Quarter of Section 5 and parts of the Northwest and Southwest Quarters of Section 8 of Township 23, Range 19, more particularly described as follows:

Beginning for the same at an iron pin found marking the northeast corner of the said northwest quarter of section 8; Thence, South 00 degrees 43 minutes 28 seconds East with the east line of said quarter, a distance of 567.38 feet to an iron pin set thereon;

Thence, North 89 degrees 44 minutes 46 seconds West, a distance of 526.91 feet to an iron pin set;

Thence, South 04 degrees 46 minutes 48 seconds West, passing an iron pin set for reference at 679.56 feet, a distance of 709.95 feet to a Mag-nail set on the centerline of Opdyke Road (C.H. 190);

Thence, North 86 degrees 28 minutes 45 seconds West with said centerline, a distance of 83.02 feet to a Mag-nail set marking the northwest corner of an existing cemetery;

Thence, South 05 degrees 09 minutes 47 seconds West, passing an iron pin set for reference at 24.07 feet, a distance of 212.59 feet to an iron pin set marking the southwest corner of said cemetery;

Thence, South 86 degrees 48 minutes 20 seconds East, a distance of 112.91 feet to an iron pin set marking the southeast corner of said cemetery;

Thence, North 04 degrees 18 minutes 03 seconds East, passing an iron pin set for reference at 193.86 feet, a distance of 211.88 feet to a Mag-nail set on the said Opdyke Road centerline;

Thence, South 86 degrees 28 minutes 45 seconds East with said centerline, a distance of 569.89 feet to its intersection with the said east line of the said northwest quarter of section 8 as referenced by a Railroad spike found South 87 degrees 39 minutes 45 seconds East, a distance of 3.08 feet;

Thence, South 00 degrees 43 minutes 28 seconds East with said east line, a distance of 1244.03 feet to an iron pin found marking the southeast corner of said quarter, the same being the northeast corner of the said southwest corner of said section 8;

Thence, South 00 degrees 15 minutes 37 seconds East with the east line of said southwest quarter, a distance of 1769.72 feet to the northeast corner of an existing parcel owned by R.L. Hall (ORV 417/319) as referenced by an iron pin found South 89 degrees 25 minutes 11 seconds East, a distance of 4.64 feet;

Thence, North 89 degrees 25 minutes 11 seconds West with the north line of said parcel, a distance of 1319.09 feet to an iron pin on the east line of an existing parcel owned by C.&I. Brown (770/594);

Thence, North 00 degrees 41 minutes 10 seconds West with said east line and its northerly projection, a distance of 2602.17 feet to an iron pin found marking the southeasterly corner of an existing parcel owned by M.&T. Kropf (ORV 279/17);

Thence, North 00 degrees 16 minutes 03 seconds East with the east line of said parcel, passing an iron pin set for reference at 449.77 feet, a distance of 479.77 feet to a Mag-nail set on the said Opdyke Road centerline;

Thence, North 86 degrees 49 minutes 11 seconds West with said centerline, a distance of 692.33 feet to a Mag-nail set marking its intersection with the east line of an existing parcel also owned by M.&T. Kropf (890/593);

Thence, North 00 degrees 46 minutes 45 seconds West with said east line, passing an iron pin set for reference at 25.00 feet, a distance of 362.69 feet to an iron pin found;

Thence, North 88 degrees 17 minutes 03 seconds West with the north line of said parcel and its westerly projection, a distance of 352.06 feet to an iron pin found marking the southeast corner of an existing parcel owned by J. Robinson (ORV 511/282);

Thence North 00 degrees 02 minutes 40 seconds East with the east line of said parcel and its northerly projection, a distance of 1825.76 feet to an iron pin set marking the northeast corner of the Eugene A. Beeching Allotment No. 1 as recorded in Plat Volume 21, page 17 of the plat records of said County;

Thence, North 89 degrees 35 minutes 50 seconds West with the north line of said allotment, a distance of 28.01 feet to an iron pin found marking the southeast corner of an existing parcel owned by R.&R. Kelly (ORV 274/434);

Thence, North 00 degrees 01 minutes 28 seconds West with the east line of said parcel and its northerly projection, a distance of 924.15 feet to an iron pin found on the south line of an existing parcel owned by D.S. Wilson, et. al. (ORV 226/259);

Thence, North 89 degrees 57 minutes 28 seconds East with the south line of said parcel, passing an iron pin set for reference at 2302.46 feet, a distance of 2332.46 feet to a Mag-nail set on the centerline of Plymouth-Springmill Road (C.H. 191);

Thence, South 18 degrees 04 minutes 26 seconds East with said centerline, a distance of 211.92 feet to a Mag-nail set marking the northeast corner of an existing parcel owned by S.&J. Hall (ORV 622/889);

Thence, South 89 degrees 53 minutes 19 seconds West with the north line of said parcel, passing an iron pin found for reference at 30.00 feet, a distance of 247.45 feet to an iron pin found;

Thence, South 00 degrees 21 minutes 49 seconds West with the west line of said parcel and its southerly projection, a distance of 739.37 feet to an iron pin found marking the southwest corner of an existing parcel owned by R.&J. Akers (ORV 747/476);

Thence, South 89 degrees 38 minutes 11 seconds East with the south line of said parcel, a distance of 243.78 feet to an iron pin set marking its intersection with east line of the said southwest quarter of said section 5;

Thence, South 00 degrees 24 minutes 43 seconds West with said east line, a distance of 565.99 feet to an iron pin set marking its intersection with the northerly line of an existing parcel owned by W.&C. Mc Dougal (ORV 496/510);

Thence, South 83 degrees 25 minutes 28 seconds West with said north line, a distance of 16.01 feet to an iron pin found;

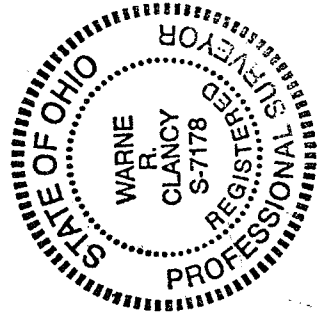
Thence, South 01 degrees 25 minutes 46 seconds West with the west line of said parcel, a distance of 424.61 feet to an iron pin found marking the southwest corner of said parcel;

Thence, South 88 degrees 23 minutes 31 seconds East with said south line, a distance of 23.44 feet to the Place of Beginning, containing 248.234 acres, of which 100.593 acres

lie in the said southwest quarter of section 5, 93.610 acres in the said northwest quarter of section 8, and 54.031 acres in the said southwest quarter of section 8 according to survey by Warne R. Clancy, Professional Surveyor #7178, on February 2, 2002.

Iron pins set are #5 rebars with caps stamped "CLANCY 7178".

Bearings are based on OR V 298, page 275.



Parcel "A" - 248.234 ac.

*Warne R. Clancy*  
Warne R. Clancy  
Professional Surveyor #7178

NEW SURVEY  
OF EXISTING PARCEL  
RICHLAND COUNTY  
TAX MAP. OFFICE

INITIAL *WC*  
DATE *2-15-02*

P-159

**SURVEY DESCRIPTION**

**Part Northwest Quarter - Section 8  
Plymouth Township, T-23, R-19  
Richland County, Ohio**

Situated in the Township of Plymouth, County of Richland, State of Ohio, and being a part the Northwest Quarter of Section 8 of Township 23, Range 19, more particularly described as follows:

Commencing for the same at an iron pin found marking the northeast corner of said northwest quarter; Thence, South 00 degrees 43 minutes 28 seconds East with the east line of said quarter, a distance of 567.38 feet to an iron pin set thereon, the Place of Beginning;

Thence, North 89 degrees 44 minutes 46 seconds West, a distance of 526.91 feet to an iron pin set;

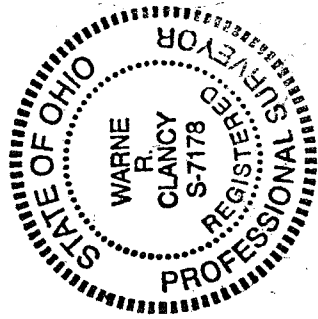
Thence, South 04 degrees 46 minutes 48 seconds West, passing an iron pin set for reference at 679.56 feet, a distance of 709.95 feet to a Mag-nail set on the centerline of Opdyke Road (C.H. 190);

Thence, South 86 degrees 28 minutes 45 seconds East with said centerline, a distance of 596.57 feet to its point of intersection with the said east line of said quarter as referenced by a Railroad spike found South 87 degrees 39 minutes 45 seconds East, a distance of 3.08 feet;

Thence, North 00 degrees 43 minutes 28 seconds West with said east line, passing an iron pin set for reference at 30.00 feet, a distance of 741.84 feet to the Place of Beginning, containing 9.346 acres according to survey by Warne R. Clancy, Professional Surveyor #7178, on February 2, 2002.

Iron pins set are #5 rebars with caps stamped "CLANCY 7178".

Bearings are based on ORV 298, page 275.



Parcel "B" - 9.346 ac.

*Warne R. Clancy*  
Warne R. Clancy  
Professional Surveyor #7178

NEW SPLIT  
RICHLAND COUNTY  
TAX MAP OFFICE  
INITIAL DATE  
P-159