



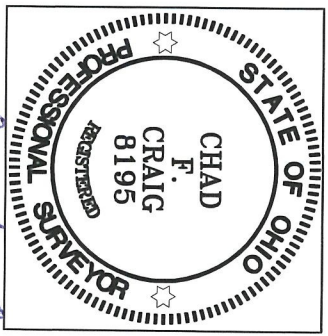
SCALE: 1" = 40'

REFERENCES:
SURVEY MM-82
SURVEY J-436

NORTH



BASIS OF BEARING IS STATE PLANE
GRID NORTH NAD 83 (2011), GEOID
184, OHIO NORTH ZONE.

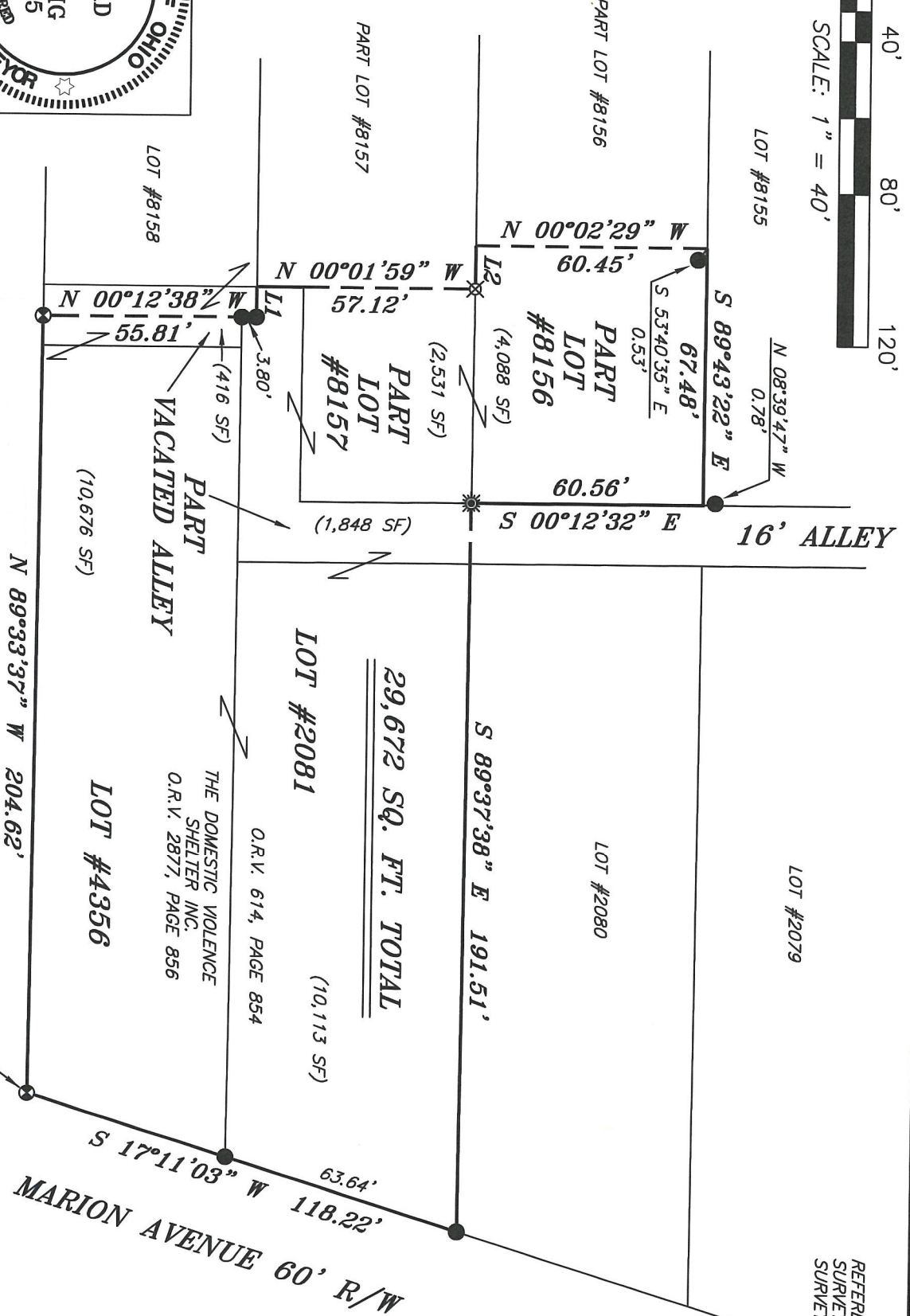


SURVEY BY: *Chad F. Craig*
CHAD F. CRAIG P.S. #8195
for SELLER & CRAIG SURVEYING INC.
270 PARK AVENUE WEST
MANSFIELD, OHIO 44902
(419) 525-3644
EMAIL: SEILERANDCRAIG@SEILERANDCRAIG.COM

NEW SURVEY
OF EXISTING PARCEL
RICHLAND COUNTY
TAX MAP OFFICE
EAK 9-5-21
INITIAL DATE
NN-341

LINE	BEARING	DISTANCE
L1	N 89°37'00" W	8.00'
L2	N 89°37'38" W	11.38'

16' ALLEY



LEGEND

- IRON PIN FOUND
- IRON PIPE FOUND
- ⊙ SURVEY MARKER FOUND
- △ RAILROAD SPIKE SET
- ☀ DRILL HOLE FOUND
- ⊗ 5/8" IRON PIN SET WITH CAP STAMPED "CRAIG 8195"

SURVEY PLAT FOR

THE DOMESTIC VIOLENCE SHELTER INC.

LOT #2081, LOT #4356, PART LOT #8156,
PART LOT #8157 & PART VACATED ALLEY
CITY OF MANSFIELD, RICHLAND COUNTY, OHIO

DATE: AUGUST 10, 2021 SCALE: 1"=40'

MARION_AVE_386

SURVEY DESCRIPTION

LOT #2081, LOT #4356, PART LOTS #8156 & #8157, PART VACATED ALLEY
CITY OF MANSFIELD,
RICHLAND COUNTY, OHIO

Situated in the City of Mansfield, County of Richland, State of Ohio and being known as Lot #2081, Lot #4356 and Part of Lots #8156 & #8157 of the consecutively numbered lots in said city, and part of a vacated alley, and being more particularly described as follows:

Beginning for the same at a survey marker found and accepted as marking the southeast corner of Lot #4356; Thence, North 89 degrees 33 minutes 37 seconds West with the south line of said lot and the westerly prolongation thereof 204.62 feet to a survey marker found marking the center of a vacated alley;

Thence, North 00 degrees 12 minutes 38 seconds West with the center of said vacated alley, passing through an iron pin found at 52.01 feet for a total distance of 55.81 feet to an iron pin found in the center of said vacated alley;

Thence, North 89 degrees 37 minutes 00 seconds West 8.00 feet to a point referenced by an iron pin found on bearing of South 89 degrees 37 minutes 00 seconds East and at a distance of 8.00 feet, said point being a point on the south line of Lot #8157;

Thence, North 00 degrees 01 minute 59 seconds West 57.12 feet to an iron pin set on the north line of Lot #8157, the same being the south line of Lot #8156;

Thence, North 89 degrees 37 minutes 38 seconds West with the north line of Lot #8157, 11.38 feet to a point referenced by an iron pin set on a bearing of South 89 degrees 37 minutes 38 seconds East and at a distance of 11.38 feet;

Thence, North 00 degrees 02 minutes 29 seconds West 60.45 feet to a point on the north line of Lot #8156, the same being the south line of Lot #8155, said point being referenced by an iron pin found on a bearing of South 53 degrees 40 minutes 35 seconds East and at a distance of 0.53 feet;

Thence South 89 degrees 43 minutes 22 seconds East with the north line of Lot #8156, and at a distance of 67.48 feet to a point on the west right of way of a 16' public alley, referenced by an iron pin found on a bearing of North 08 degrees 39 minutes 47 seconds West and at a distance of 0.78 feet;

Thence, South 00 degrees 12 minutes 32 seconds East with the west line of said alley 60.56 feet to a drill hole found and accepted as marking the southeast corner of Lot #8156;

Thence, South 89 degrees 37 minutes 38 seconds East 191.51 feet to an iron pin found and accepted as marking the northeast corner of Lot #2081;

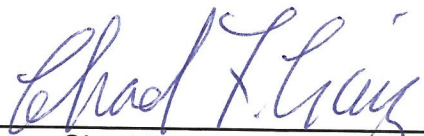
Thence, South 17 degrees 11 minutes 03 seconds West with the east line Lot #2081 and the southerly prolongation thereof, passing through an iron pin found at 63.64 feet for a total distance of 118.22 feet to the place of beginning, containing 29,672 square feet, of which 10,113 square feet are in Lot #2081, 10,676 square feet are in Lot #4356, 4,088 square feet are in Part Lot #8156, 2,531 square feet are in Part Lot #8157, 2,264 square feet are in part of a vacated alley according to survey by Chad F. Craig P.S. 8195 on August 10, 2021, but subject to all easements, right of ways and highways of record.

Iron pins set are 5/8" rods with caps stamped "CRAIG 8195".

Bearings are based on State Plane Grid North NAD 83 (2011), Geoid 18A, Ohio North Zone and are intended to be used for angular determination only.



NEW SURVEY
OF EXISTING PARCEL
RICHLAND COUNTY
TAX MAP OFFICE
EAK **9-5-21**
INITIAL DATE
NN-341


Chad F. Craig P.S. #8195
Seiler and Craig Surveying, Inc.