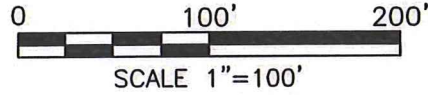


LEGEND

- IRON PIN FOUND
- RAILROAD SPIKE FOUND
- ⊗ STONE FOUND
- IRON PIN SET, 5/8" DIA. ROD WITH PLASTIC CAP STAMPED "STEVENS 7052"



PART OF THE NW. 1/4
OF SEC. 2, T-21, R-17,
WORTHINGTON TWP.,
RICHLAND CO., OHIO.



Distances shown hereon are expressed in feet and decimal parts thereof.

Basis of bearings: Survey HH-264.

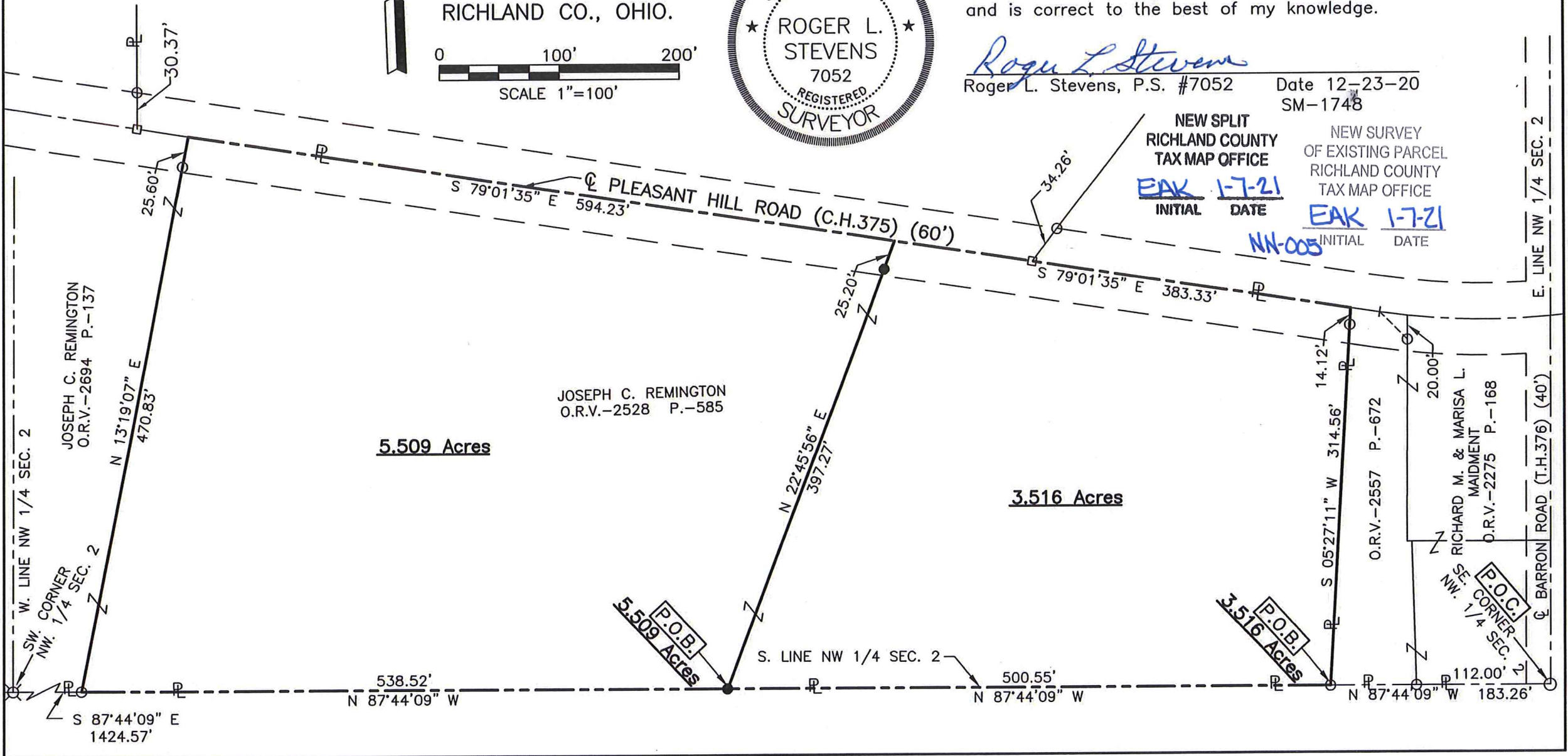
CERTIFICATION: I hereby certify that the foregoing survey was prepared from actual field measurements, in accordance with Chapter 4733-37, Ohio Administrative Code and is correct to the best of my knowledge.

Roger L. Stevens
Roger L. Stevens, P.S. #7052

Date 12-23-20
SM-1748

NEW SPLIT
RICHLAND COUNTY
TAX MAP OFFICE
EAK 1-7-21
INITIAL DATE

NEW SURVEY
OF EXISTING PARCEL
RICHLAND COUNTY
TAX MAP OFFICE
EAK 1-7-21
INITIAL DATE
NN-005



E. LINE NW 1/4 SEC. 2

W. LINE NW 1/4 SEC. 2

SW CORNER NW 1/4 SEC. 2

SW CORNER NW 1/4 SEC. 2

SW CORNER NW 1/4 SEC. 2

SW CORNER NW 1/4 SEC. 2

SW CORNER NW 1/4 SEC. 2

SW CORNER NW 1/4 SEC. 2

SW CORNER NW 1/4 SEC. 2

SW CORNER NW 1/4 SEC. 2

SW CORNER NW 1/4 SEC. 2

SW CORNER NW 1/4 SEC. 2

SW CORNER NW 1/4 SEC. 2

SW CORNER NW 1/4 SEC. 2

SW CORNER NW 1/4 SEC. 2

SW CORNER NW 1/4 SEC. 2

SW CORNER NW 1/4 SEC. 2

SW CORNER NW 1/4 SEC. 2

SW CORNER NW 1/4 SEC. 2

SW CORNER NW 1/4 SEC. 2

SW CORNER NW 1/4 SEC. 2

SW CORNER NW 1/4 SEC. 2

SW CORNER NW 1/4 SEC. 2

SW CORNER NW 1/4 SEC. 2

SW CORNER NW 1/4 SEC. 2

SW CORNER NW 1/4 SEC. 2

SW CORNER NW 1/4 SEC. 2

SW CORNER NW 1/4 SEC. 2

SW CORNER NW 1/4 SEC. 2

SW CORNER NW 1/4 SEC. 2

SW CORNER NW 1/4 SEC. 2

SW CORNER NW 1/4 SEC. 2

SW CORNER NW 1/4 SEC. 2

SW CORNER NW 1/4 SEC. 2

SW CORNER NW 1/4 SEC. 2

SW CORNER NW 1/4 SEC. 2

SW CORNER NW 1/4 SEC. 2

SW CORNER NW 1/4 SEC. 2

SW CORNER NW 1/4 SEC. 2

SW CORNER NW 1/4 SEC. 2

SW CORNER NW 1/4 SEC. 2

SW CORNER NW 1/4 SEC. 2

SW CORNER NW 1/4 SEC. 2

SW CORNER NW 1/4 SEC. 2

SW CORNER NW 1/4 SEC. 2

SW CORNER NW 1/4 SEC. 2

SW CORNER NW 1/4 SEC. 2

SW CORNER NW 1/4 SEC. 2

SW CORNER NW 1/4 SEC. 2

SW CORNER NW 1/4 SEC. 2

SW CORNER NW 1/4 SEC. 2

SW CORNER NW 1/4 SEC. 2

SW CORNER NW 1/4 SEC. 2

SW CORNER NW 1/4 SEC. 2

SW CORNER NW 1/4 SEC. 2

SW CORNER NW 1/4 SEC. 2

SW CORNER NW 1/4 SEC. 2

SW CORNER NW 1/4 SEC. 2

SW CORNER NW 1/4 SEC. 2

SW CORNER NW 1/4 SEC. 2

SW CORNER NW 1/4 SEC. 2

SW CORNER NW 1/4 SEC. 2

SW CORNER NW 1/4 SEC. 2

SW CORNER NW 1/4 SEC. 2

SW CORNER NW 1/4 SEC. 2

SW CORNER NW 1/4 SEC. 2

SW CORNER NW 1/4 SEC. 2

SW CORNER NW 1/4 SEC. 2

SW CORNER NW 1/4 SEC. 2

SW CORNER NW 1/4 SEC. 2

SW CORNER NW 1/4 SEC. 2

SW CORNER NW 1/4 SEC. 2

SW CORNER NW 1/4 SEC. 2

SW CORNER NW 1/4 SEC. 2

SW CORNER NW 1/4 SEC. 2

SW CORNER NW 1/4 SEC. 2

SW CORNER NW 1/4 SEC. 2

SW CORNER NW 1/4 SEC. 2

SW CORNER NW 1/4 SEC. 2

SW CORNER NW 1/4 SEC. 2

SW CORNER NW 1/4 SEC. 2

SW CORNER NW 1/4 SEC. 2

SW CORNER NW 1/4 SEC. 2

SW CORNER NW 1/4 SEC. 2

SW CORNER NW 1/4 SEC. 2

SW CORNER NW 1/4 SEC. 2

SW CORNER NW 1/4 SEC. 2

SW CORNER NW 1/4 SEC. 2

SW CORNER NW 1/4 SEC. 2

SW CORNER NW 1/4 SEC. 2

SW CORNER NW 1/4 SEC. 2

SW CORNER NW 1/4 SEC. 2

SW CORNER NW 1/4 SEC. 2

SW CORNER NW 1/4 SEC. 2

SW CORNER NW 1/4 SEC. 2

SW CORNER NW 1/4 SEC. 2

SW CORNER NW 1/4 SEC. 2

SW CORNER NW 1/4 SEC. 2

SW CORNER NW 1/4 SEC. 2

SW CORNER NW 1/4 SEC. 2

SW CORNER NW 1/4 SEC. 2

SW CORNER NW 1/4 SEC. 2

SW CORNER NW 1/4 SEC. 2

SW CORNER NW 1/4 SEC. 2

SW CORNER NW 1/4 SEC. 2

SW CORNER NW 1/4 SEC. 2

SW CORNER NW 1/4 SEC. 2

SW CORNER NW 1/4 SEC. 2

SW CORNER NW 1/4 SEC. 2

SW CORNER NW 1/4 SEC. 2

SW CORNER NW 1/4 SEC. 2

SW CORNER NW 1/4 SEC. 2

SW CORNER NW 1/4 SEC. 2

SW CORNER NW 1/4 SEC. 2

SW CORNER NW 1/4 SEC. 2

SW CORNER NW 1/4 SEC. 2

SW CORNER NW 1/4 SEC. 2

SW CORNER NW 1/4 SEC. 2

SW CORNER NW 1/4 SEC. 2

SW CORNER NW 1/4 SEC. 2

SW CORNER NW 1/4 SEC. 2

SW CORNER NW 1/4 SEC. 2

SW CORNER NW 1/4 SEC. 2

SW CORNER NW 1/4 SEC. 2

SW CORNER NW 1/4 SEC. 2

SW CORNER NW 1/4 SEC. 2

SW CORNER NW 1/4 SEC. 2

SW CORNER NW 1/4 SEC. 2

SW CORNER NW 1/4 SEC. 2

SW CORNER NW 1/4 SEC. 2

SW CORNER NW 1/4 SEC. 2

SW CORNER NW 1/4 SEC. 2

SW CORNER NW 1/4 SEC. 2

SW CORNER NW 1/4 SEC. 2

SW CORNER NW 1/4 SEC. 2

SW CORNER NW 1/4 SEC. 2

SW CORNER NW 1/4 SEC. 2

SW CORNER NW 1/4 SEC. 2

SW CORNER NW 1/4 SEC. 2

SW CORNER NW 1/4 SEC. 2

SW CORNER NW 1/4 SEC. 2

SW CORNER NW 1/4 SEC. 2

SW CORNER NW 1/4 SEC. 2

SW CORNER NW 1/4 SEC. 2

SW CORNER NW 1/4 SEC. 2

SW CORNER NW 1/4 SEC. 2

SW CORNER NW 1/4 SEC. 2

SW CORNER NW 1/4 SEC. 2

SW CORNER NW 1/4 SEC. 2

SW CORNER NW 1/4 SEC. 2

SW CORNER NW 1/4 SEC. 2

SW CORNER NW 1/4 SEC. 2

SW CORNER NW 1/4 SEC. 2

SW CORNER NW 1/4 SEC. 2

SW CORNER NW 1/4 SEC. 2

SW CORNER NW 1/4 SEC. 2

SW CORNER NW 1/4 SEC. 2

SW CORNER NW 1/4 SEC. 2

SW CORNER NW 1/4 SEC. 2

SW CORNER NW 1/4 SEC. 2

SW CORNER NW 1/4 SEC. 2

SW CORNER NW 1/4 SEC. 2

SW CORNER NW 1/4 SEC. 2

SW CORNER NW 1/4 SEC. 2

SW CORNER NW 1/4 SEC. 2

SW CORNER NW 1/4 SEC. 2

SW CORNER NW 1/4 SEC. 2

SW CORNER NW 1/4 SEC. 2

SW CORNER NW 1/4 SEC. 2

SW CORNER NW 1/4 SEC. 2

SW CORNER NW 1/4 SEC. 2

SW CORNER NW 1/4 SEC. 2

SW CORNER NW 1/4 SEC. 2

SW CORNER NW 1/4 SEC. 2

SW CORNER NW 1/4 SEC. 2

SW CORNER NW 1/4 SEC. 2

SW CORNER NW 1/4 SEC. 2

SW CORNER NW 1/4 SEC. 2

SW CORNER NW 1/4 SEC. 2

SW CORNER NW 1/4 SEC. 2

SW CORNER NW 1/4 SEC. 2

SW CORNER NW 1/4 SEC. 2

SW CORNER NW 1/4 SEC. 2

SW CORNER NW 1/4 SEC. 2

**SURVEYOR'S DESCRIPTION FOR
RICHARD MAIDMENT**

3.516 Acres

Situated in the Township of Worthington, County of Richland, State of Ohio, being part of the Northwest Quarter of Section 2, Township 21, Range 17 and being more particularly described as follows:

Commencing at an iron pin found in the southeast corner of said Northwest Quarter, said iron pin also being in the centerline of Barron Road (T.H. 376)(40');

Thence N 87° 44' 09" W, 183.26 feet along the south line of said Northwest Quarter to an iron pin found in the southwest corner of a parcel of land conveyed to Richard M. and Marisa L. Maidment by official records volume 2557, page 672, said iron pin being the **true place of beginning**:

Thence with the following **FOUR** courses:

- 1) **N 87° 44' 09" W, 500.55 feet** and continuing along said south line of said Northwest Quarter to an iron pin set;
- 2) **N 22° 45' 56" E, 397.27 feet** to a point being in the centerline of Pleasant Hill Road (C.H. 375)(60') and passing through an iron pin set at 372.07 feet;
- 3) **S 79° 01' 35" E, 383.33 feet** along said centerline of Pleasant Hill Road (C.H. 375)(60') to a point being the northwest corner of said land of Richard M. and Marisa L. Maidment, said point being referenced by an iron pin found S 05° 27' 11" W, 14.12 feet from said point;
- 4) **S 05° 27' 11" W, 314.56 feet** along the west line of said land of Richard M. and Marisa L. Maidment to the **true place of beginning**, passing through previously referenced iron pin found at 14.12 feet and containing **3.516 acres**, more or less, and subject to all legal highways and easements of record.

The grantees, their heirs and assigns do hereby covenant and agree that the parcel of land described in this instrument or any portion thereof does not constitute a principal building site.

Basis of Bearings: Survey HH-264.

According to a survey made in December 2020 by Roger L. Stevens, Ohio Registered Surveyor No. 7052.

All iron pins set are 5/8" diameter rod with plastic cap stamped "STEVENS 7052".

NEW SPLIT
RICHLAND COUNTY
TAX MAP OFFICE

EAK 1-1-21
INITIAL DATE
NN-005



Roger L. Stevens

Roger L. Stevens
Registered Surveyor No. 7052
SM-1748G

5.509 Acres

Situated in the Township of Worthington, County of Richland, State of Ohio, being part of the Northwest Quarter of Section 2, Township 21, Range 17 and being more particularly described as follows:

Commencing at an iron pin found in the southeast corner of said Northwest Quarter, said iron pin also being in the centerline of Barron Road (T.H. 376)(40');

Thence N 87° 44' 09" W, 683.81 feet along the south line of said Northwest Quarter to an iron pin set, said iron pin being the **true place of beginning**:

Thence with the following **FOUR** courses:

- 1) N 87° 44' 09" W, **538.52 feet** and continuing along said south line of said Northwest Quarter to an iron pin found in the southeasterly corner of a parcel of land conveyed to Joseph C. Remington by official records volume 2694, page 137;
- 2) N 13° 19' 07" E, **470.83 feet** along the easterly line of said land of Joseph C. Remington to a point being the northeasterly corner of said land, said point also being in the centerline of Pleasant Hill Road (C.H. 375)(60') and passing through an iron pin found at 445.23 feet;
- 3) S 79° 01' 35" E, **594.23 feet** along said centerline of Pleasant Hill Road (C.H. 375)(60') to a point, said point being referenced by an iron pin set S 22° 45' 56" W, 25.20 feet from said point;
- 4) S 22° 45' 56" W, **397.27 feet** to the **true place of beginning**, passing through previously referenced iron pin set at 25.20 feet and containing **5.509 acres**, more or less, and subject to all legal highways and easements of record.

Basis of Bearings: Survey HH-264.

According to a survey made in December 2020 by Roger L. Stevens, Ohio Registered Surveyor No. 7052.

All iron pins set are 5/8" diameter rod with plastic cap stamped "STEVENS 7052".



Roger L. Stevens
Roger L. Stevens
Registered Surveyor No. 7052
SM-1748G

NEW SURVEY
OF EXISTING PARCEL
RICHLAND COUNTY
TAX MAP OFFICE

EAK INITIAL
1-7-21 DATE
NN-005