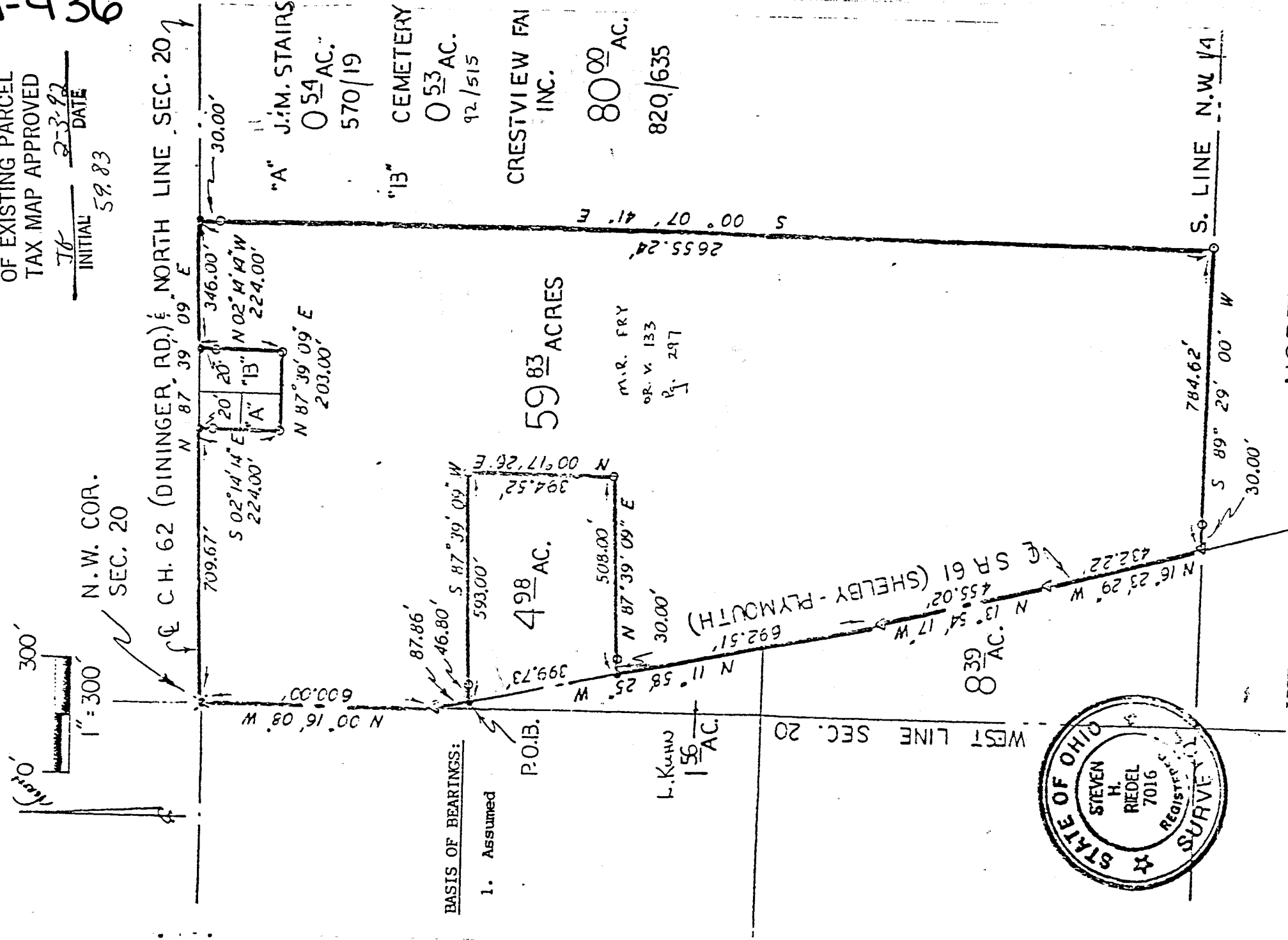


7-436

NEW SURVEY  
OF EXISTING PARCEL  
TAX MAP APPROVED

JK INITIAL  
2-3-92 DATE  
59.83



LEGEND:

○ - 5/8 inch rebar w/cap stamped  
"PS 7016" set

✕ - Railroad spike set

△ - survey nail set

JKH INITIAL  
2-12-92 DATE  
TRANSFER APPROVED  
JACK REINER  
RICHLAND CO. AUDITOR



NORTHWEST QUARTE  
SEC. 20, T-23, R-19  
PLYMOUTH TOWNSH  
RICHLAND COUNTY  
OHIO

NEW SPLIT  
TAX MAP APPROVED  
JKH INITIAL  
2-3-92