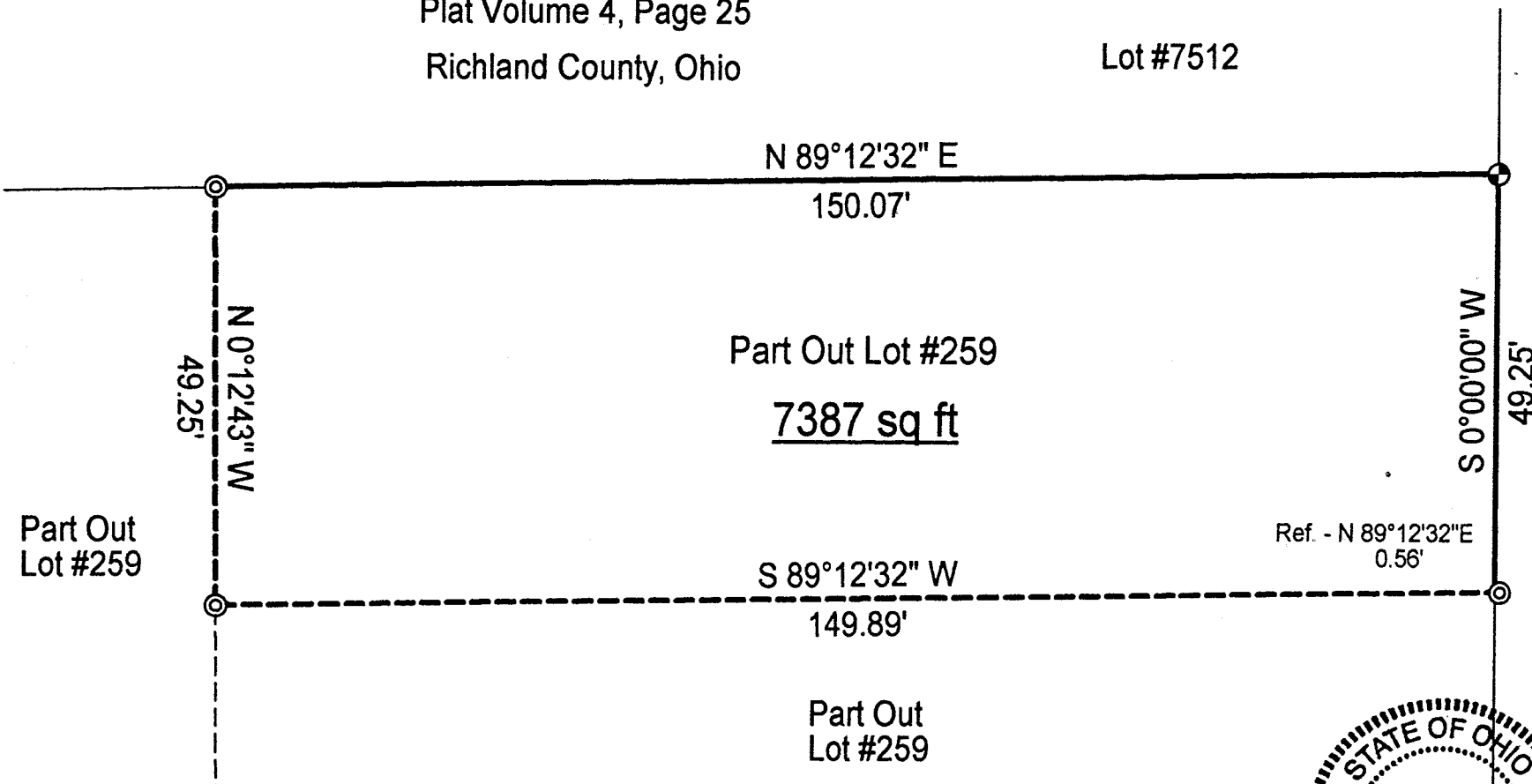


# SURVEY PLAT

For Mark Bray  
Part Out Lot #259 - City of Mansfield  
Plat Volume 4, Page 25  
Richland County, Ohio

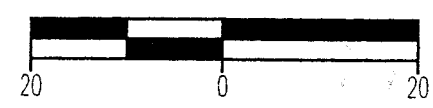
Lot #7512



BEETHOVEN STREET (50' RW)

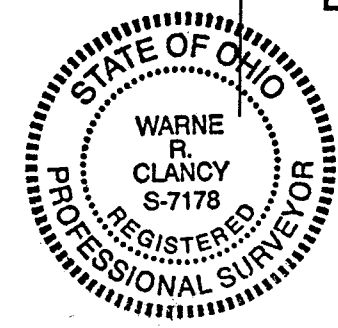


Scale : 1" = 20'



Bearings are assumed.

NEW SURVEY  
OF EXISTING PARCEL  
RICHLAND COUNTY  
TAX MAP OFFICE  
INITIAL *WC* DATE 5-11-01



*Warne R. Clancy*  
Warne R. Clancy P.S. #7178

## LEGEND

- ⊕ Iron pin set with cap stamped "CLANCY 7178"
- ⊙ Iron pin in concrete found

DATE: 5/9/01
JOB NO.: W050301

N-305

SURVEY DESCRIPTION

Part Out Lot #259 - City of Mansfield  
Plat Volume 4, Page 25  
Richland County, Ohio

Situated in the City of Mansfield, County of Richland, State of Ohio, and being a part of Out Lot #259 of said City as recorded in Plat Volume 4, page 25 of the plat records of said County, more particularly described as follows:

Beginning for the same at an iron pin set marking the southeast corner of Lot #7512 of the consecutively numbered lots of said City as recorded in said Plat Volume 4, page 25 of said plat records, the same being a point on the west right-of-way line of Beethoven Street (50' R/W);

Thence, South 00 degrees 00 minutes 00 seconds West with said right-of-way line, a distance of 49.25 feet to a point thereon as referenced by an iron pin in concrete found North 89 degrees 12 minutes 32 seconds East, a distance of 0.56 feet;

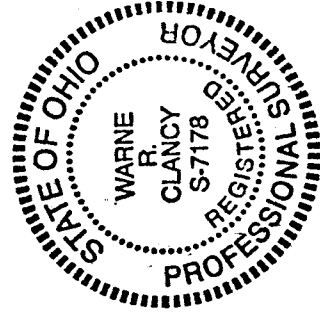
Thence, South 89 degrees 12 minutes 32 seconds West, a distance of 149.89 feet to an iron pin in concrete found;

Thence, North 00 degrees 12 minutes 43 seconds West, a distance of 49.25 feet to an iron pin in concrete found on the south line of said Lot #7512;

Thence, North 89 degrees 12 minutes 32 seconds East with said south line, a distance of 150.07 feet to the Place of Beginning, containing 7,387 square feet according to survey by Warne R. Clancy, Professional Surveyor #7178, on May 3, 2001.

Iron pin set is a #5 rebar with a cap stamped "CLANCY 7178".

Bearings are assumed.



NEW SURVEY  
OF EXISTING PARCEL  
RICHLAND COUNTY  
TAX MAP OFFICE  
INITIAL WC DATE 5-11-01

*Warne R. Clancy*  
Warne R. Clancy  
Professional Surveyor #7178

305