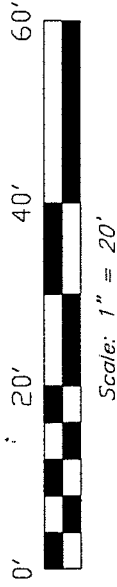


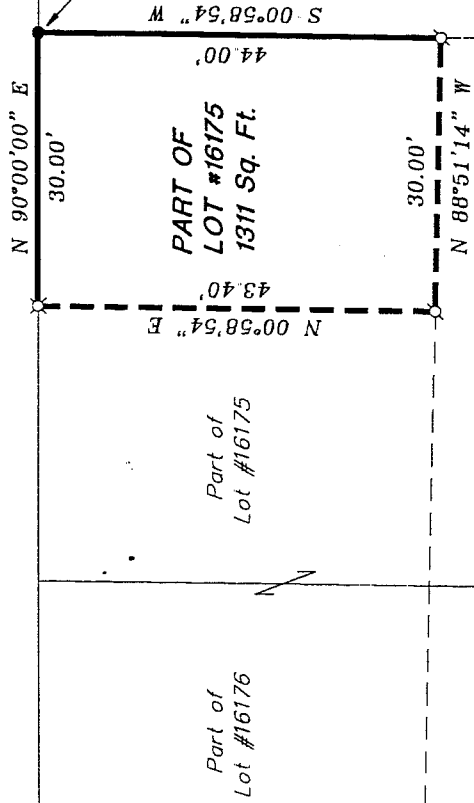
M-431

NORTH



Bearings are based on an assumed meridian and are intended to be used for angular determination only.

25' Unnamed right of way



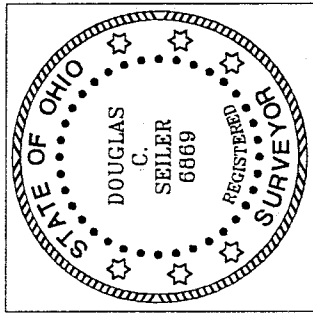
Lot #16174

Part of Lot #16176

Part of Lot #16175

The Place of Beginning

- ⊗ 5/8" rod with caps stamped "SEILER 6869", set
- ⊗ Mag Nail spike, set
- Iron pin, found



NEW SPLIT  
TAX MAP APPROVED  
INITIAL DATE  
10.13.00

*Douglas C. Seiler* 10/12/00

SURVEY BY: DOUGLAS C. SEILER  
PROFESSIONAL SURVEYOR #6869  
52-112 NORTH MAIN ST.  
MANSFIELD, OHIO 44902  
(419) 525-3644  
FAX 525-3644

SURVEY PLAT FOR	
JOYCE	
PART OF LOT #16175 CITY OF MANSFIELD OHIO	
DATE: Oct. 12, 2000	SCALE: 1"=20'

# Douglas C. Seiler

## Professional Land Surveyor

52½ North Main • Mansfield, Ohio 44902  
(419) 525-3644 • FAX (419) 525-3696

### SURVEY DESCRIPTION

PART OF LOT #16175  
CITY OF MANSFIELD, OHIO

Situated in the City of Mansfield, County of Richland, State of Ohio and being a part of Lot #16175 of the consecutively numbered lots in said city, more particularly described as follows:

Beginning for the same at an iron pin found and accepted as marking the northeast corner of said Lot #16175; Thence, South 00 degrees 58 minutes 54 seconds West with the east line of said lot, a distance of 44.00 feet to a Mag Nail spike set;

Thence, North 88 degrees 51 minutes 14 seconds West a distance of 30.00 feet to a Mag Nail spike set;

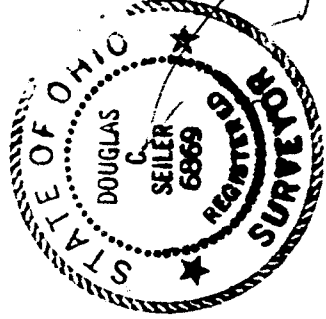
Thence, North 00 degrees 58 minutes 54 seconds East a distance of 43.40 feet to an iron pin set on the north line of said lot;

Thence, North 90 degrees 00 minutes 00 seconds East with said north line, a distance of 30.00 feet to the place of beginning, containing 1311 square feet, according to survey by Douglas C. Seiler, Professional Surveyor #6869 on October 11, 2000.

The grantee, his heirs and assigns do hereby covenant and agree that the parcel of land described by this instrument will not be conveyed by said grantee, heirs, or assigns independently from a contiguous parcel of land with road frontage without the approval of the City of Mansfield Planning Commission.

Iron pins set are 5/8" rods with caps stamped "SEILER 6869".

Bearings are based on an assumed meridian and are intended to be used for angular determination only.



NEW SPLIT  
TAX MAP APPROVED  
INITIAL DATE  
10.13.00

*Douglas C. Seiler*  
Douglas C. Seiler  
Professional Surveyor #6869

M-431