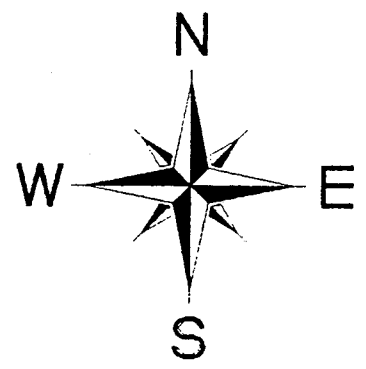


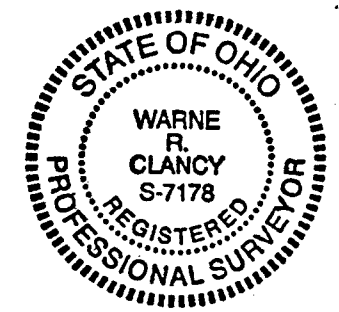
M-162

# SURVEY PLAT

For R. Waud & S. Snow  
 Part Northeast Quarter, Section 18  
 Monroe Township, T-22, R-17  
 Richland County, Ohio



Scale: 1" = 150'  
 Bearings are assumed.



*Warne R. Clancy*  
 Warne R. Clancy P.S. #7178

S. Snow Trust  
 ORV 599/386

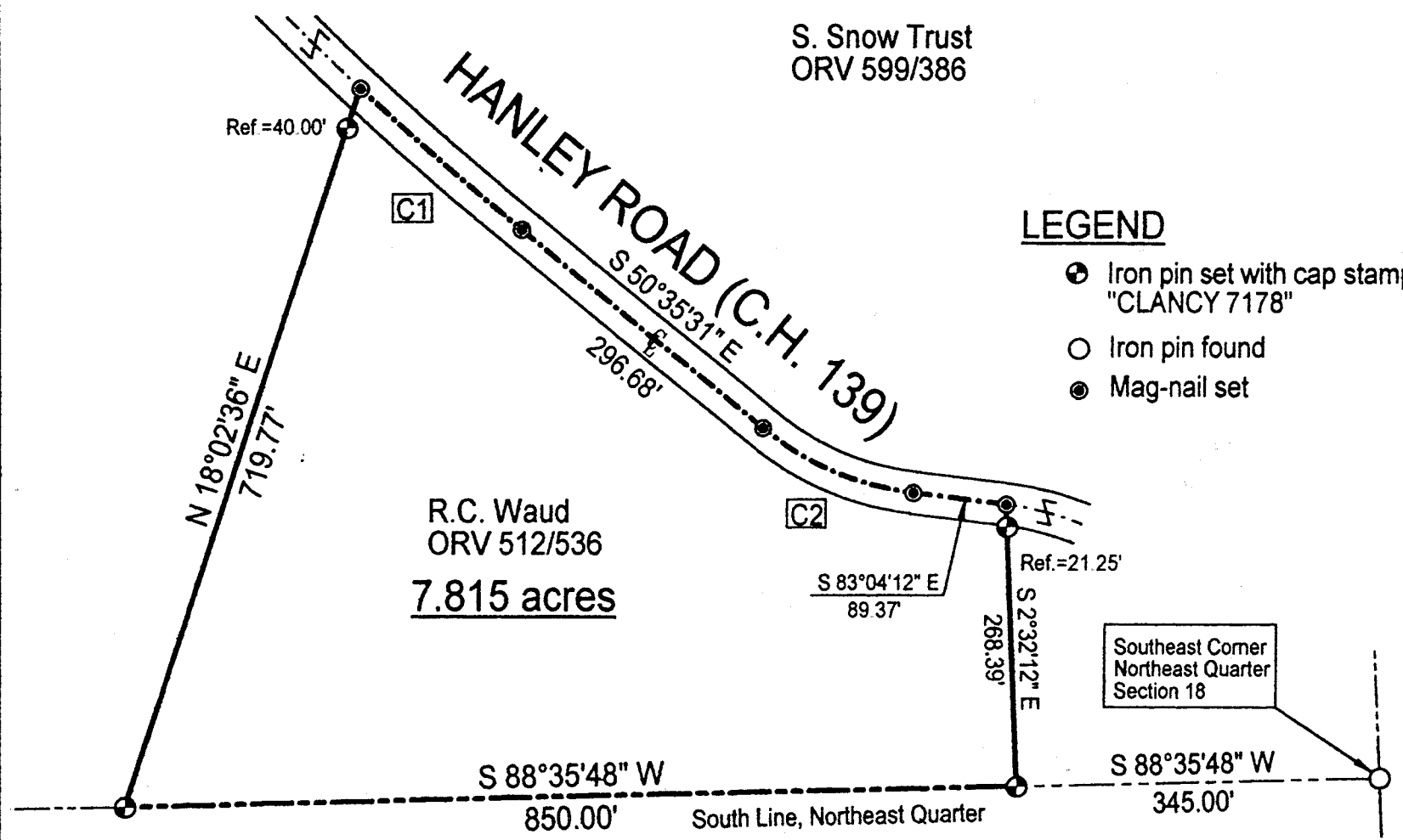
**HANLEY ROAD (C.H. 139)**  
 S 50°35'31" E  
 296.68'

R.C. Waud  
 ORV 512/536  
**7.815 acres**

E.C. Funston  
 761/519

### LEGEND

- Iron pin set with cap stamped "CLANCY 7178"
- Iron pin found
- Mag-nail set



NEW SURVEY  
 OF EXISTING PARCEL  
 TAX MAP APPROVED  
 APR 5-22-00  
DATE

Centerline Curve Table					
Id	Delta	Radius	Arc Length	Chord	Ch Bear
C1	3°53'38"	3000.00'	203.88'	203.84'	S 48°38'42" E
C2	32°28'40"	280.00'	158.72'	156.60'	S 66°49'52" E

DATE: 5/15/00  
 JOB NO.: W050200

**SURVEY DESCRIPTION**

**Part Northeast Quarter, Section 18  
Monroe Township, T-22, R-17  
Richland County, Ohio**

Situated in the Township of Monroe, County of Richland, State of Ohio, and being a part of the Northeast Quarter of Section 18 of Township 22, Range 17, more particularly described as follows:

Commencing for the same at an iron pin found marking the southeast corner of said northeast quarter; Thence, South 88 degrees 35 minutes 48 seconds West with the south line of said quarter, a distance of 345.00 feet to an iron pin set, the Place of Beginning;

Thence, continuing with said south line South 88 degrees 35 minutes 48 seconds West, a distance of 850.00 feet to an iron pin set thereon;

Thence, North 18 degrees 02 minutes 36 seconds East, passing an iron pin set for reference at 679.77 feet, a distance of 719.77 feet to a Mag-nail set on the centerline of Hanley Road (C.H. 139);

Thence, with said centerline along a curve to the left, defined by a 03 degree 53 minute 38 second central angle, a 3000.00 foot radius, a 203.88 foot arc, and a 203.84 foot chord which bears South 48 degrees 38 minutes 42 seconds East, to a Mag-nail set marking a point of tangency thereon;

Thence, continuing with said centerline South 50 degrees 35 minutes 31 seconds East, a distance of 296.68 feet to a Mag-nail set marking a point of curvature thereon;

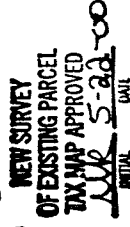
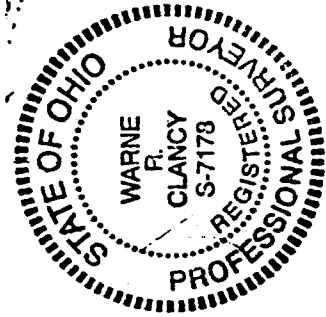
Thence, continuing with said centerline along a curve to the left, defined by a 32 degree 28 minute 40 second central angle, a 280.00 foot radius, an 158.72 foot arc, and an 156.60 foot chord which bears South 66 degrees 49 minutes 52 seconds East, to a Mag-nail set marking a point of tangency thereon;

Thence, continuing with said centerline South 83 degrees 04 minutes 12 seconds East, a distance of 89.37 feet to a Mag-nail set thereon;

Thence, South 02 degrees 32 minutes 12 seconds East, passing an iron pin set for reference at 21.25 feet, a distance of 268.39 feet to the Place of Beginning, containing 7.815 acres according to survey by Warne R. Clancy, Professional Surveyor #7178, on May 2, 2000.

Iron pins set are #5 rebars with caps stamped "CLANCY 7178".

Bearings are assumed.



M-162

*Warne R. Clancy*  
Warne R. Clancy  
Professional Surveyor #7178