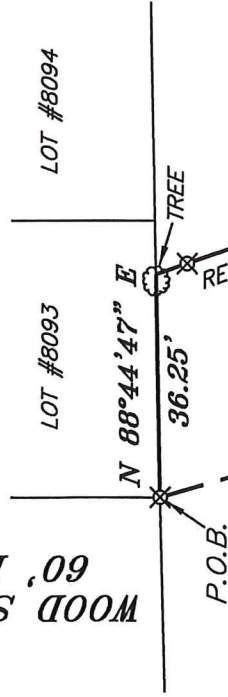




WOOD STREET  
60' R/W

NORTH



BASIS OF BEARING IS STATE PLANE  
GRID NORTH MAD 83 (2011), GEOID  
12A, OHIO NORTH ZONE.

PART LOT #9882  
PART SD #10

PART LOT #9882  
PART SD #10

(3,073 SF)

S 18°55'40" E  
77.09'

PART SD #10



REFERENCES:  
SURVEYS  
D-126  
C-362  
G-255  
GG-328

SD #5  
(6,267 SF)

PART LOT #9882  
SD #4

PART LOT  
#9882

PART LOT #9882  
SD #6

9,340 SQ.  
FT. TOTAL

S 19°34'38" E 139.77'

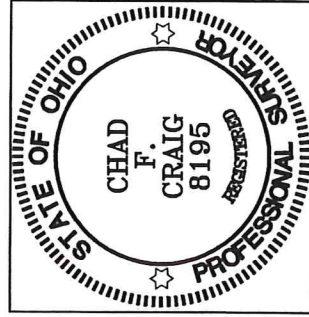
N 15°13'45" W 140.51'

NEW SURVEY  
OF EXISTING PARCEL  
RICHLAND COUNTY  
TAX MAP OFFICE

EAK 10-8-19  
INITIAL DATE  
LL-288

R=544.00'  
Δ=05°16'00"  
L=50.00'  
BRG=S 69°54'55" W  
C LEN=49.99'

DAVIS ROAD  
60' R/W



*Chad F. Craig*

SURVEY BY:  
CHAD F. CRAIG P.S. #8195  
for SEILER & CRAIG SURVEYING INC.  
270 PARK AVENUE WEST  
MANSFIELD, OHIO 44902  
(419) 525-3644  
EMAIL:SEILERANDCRAIG@SEILERANDCRAIG.COM

LEGEND

- IRON PIN FOUND
- ⊙ IRON PIPE FOUND
- ⊗ 5/8" IRON PIN SET WITH CAP STAMPED "CRAIG 8195"

SURVEY PLAT FOR  
PROPERTY TRANSFER

PART LOT #9882  
CITY OF MANSFIELD  
RICHLAND COUNTY, OHIO

DATE: OCTOBER 3, 2019  
SCALE: 1"=30'  
DAVIS\_RD\_246

**SURVEY DESCRIPTION**

PART LOT #9882  
CITY OF MANSFIELD,  
RICHLAND COUNTY, OHIO

Situated in the City of Mansfield, County of Richland, State of Ohio and being known as part Lot #9882 S subdivision 5 and part Subdivision 10 of the consecutively numbered lots in said city and being more particularly described as follows:

Beginning for the same at an iron pin set marking the southwest corner of Lot #8093 in the City of Mansfield, the same being a point on the north line of Lot #9882; Thence, North 88 degrees 44 minutes 47 seconds East with the north line of Lot #9882, a distance of 36.25 feet to a point referenced by an iron pin set on a bearing of South 18 degrees 55 minutes 40 seconds East and at a distance of 5.46 feet;

Thence, South 18 degrees 55 minutes 40 seconds East, passing through said reference pin, 77.09 feet to an iron pin found;

Thence, South 19 degrees 34 minutes 38 seconds East, 139.77 feet to an iron pin set on the south line of Lot 9882;

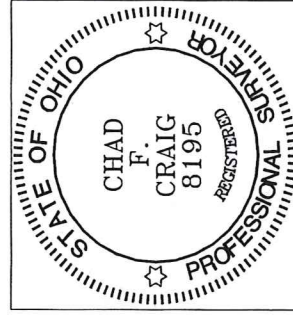
Thence, with said south line, with a curve to the right, with a central angle of 05 degrees 16 minutes 00 seconds, a radius of 544.00 feet, an arc length of 50.00 feet, on a chord bearing of South 69 degrees 54 minutes 55 seconds West and a chord length of 49.99 feet to an iron pipe found;

Thence, North 15 degrees 13 minutes 45 seconds West, 140.51 feet to an iron pin found;


Thence, North 15 degrees 50 minutes 06 seconds West, 88.77 feet to the place of beginning, containing 9,340 square feet according to survey by Chad F. Craig P.S. 8195 on October 3, 2019 but subject to all easements, right of ways and highways of record.

Iron pins set are 5/8" rods with caps stamped "CRAIG 8195".

Bearings are based on State Plane Grid North NAD 83 (2011), Geoid 12A, Ohio North Zone and are intended to be used for angular determination only.



NEW SURVEY  
OF EXISTING PARCEL  
RICHLAND COUNTY  
TAX MAP OFFICE  
EAK 10-8-19  
INITIAL DATE  
LL-288

  
Chad F. Craig P.S. #8195  
Seiler and Craig Surveying, Inc.