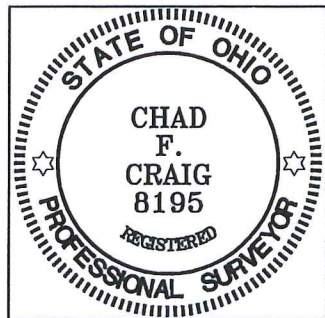
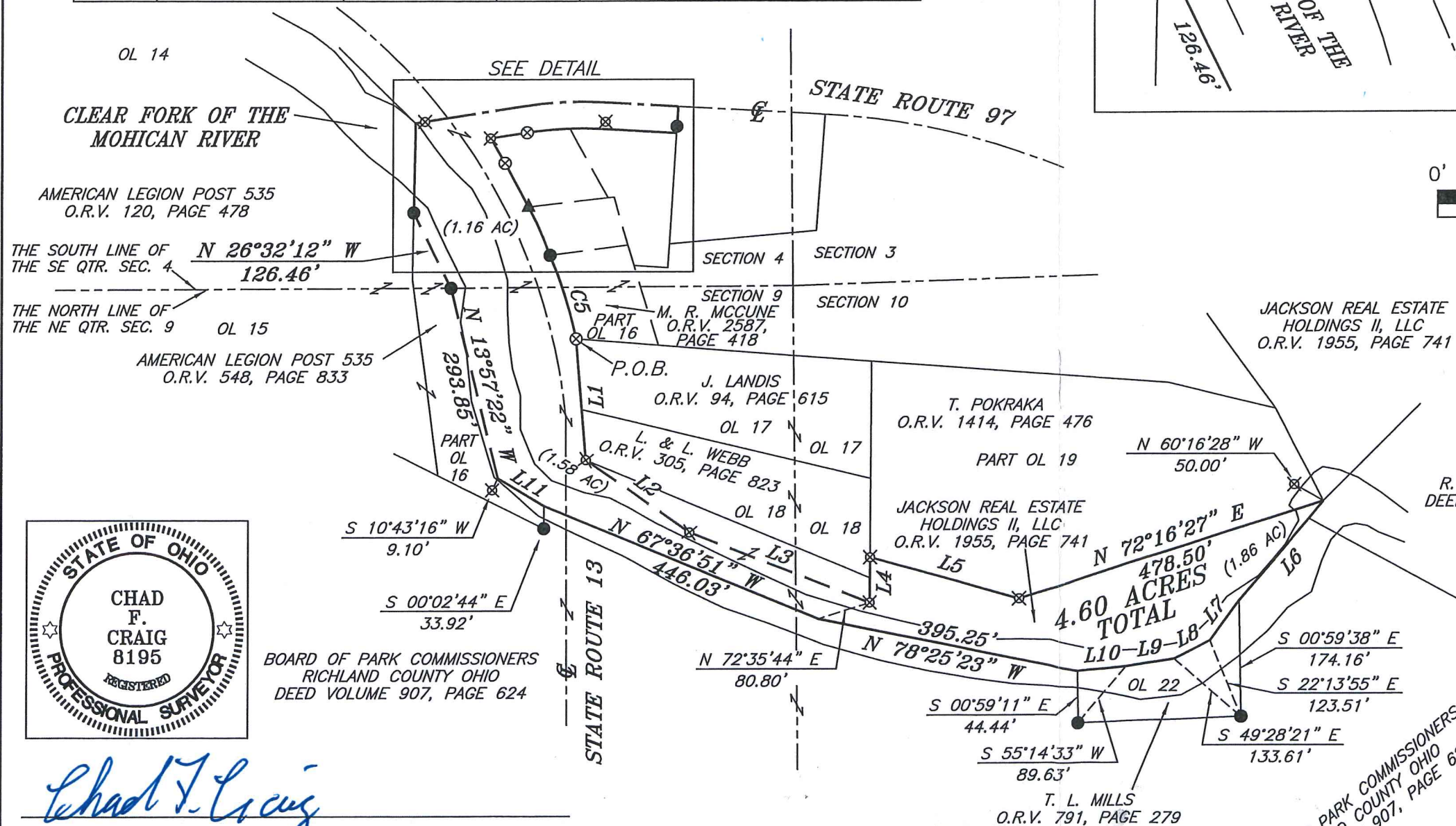
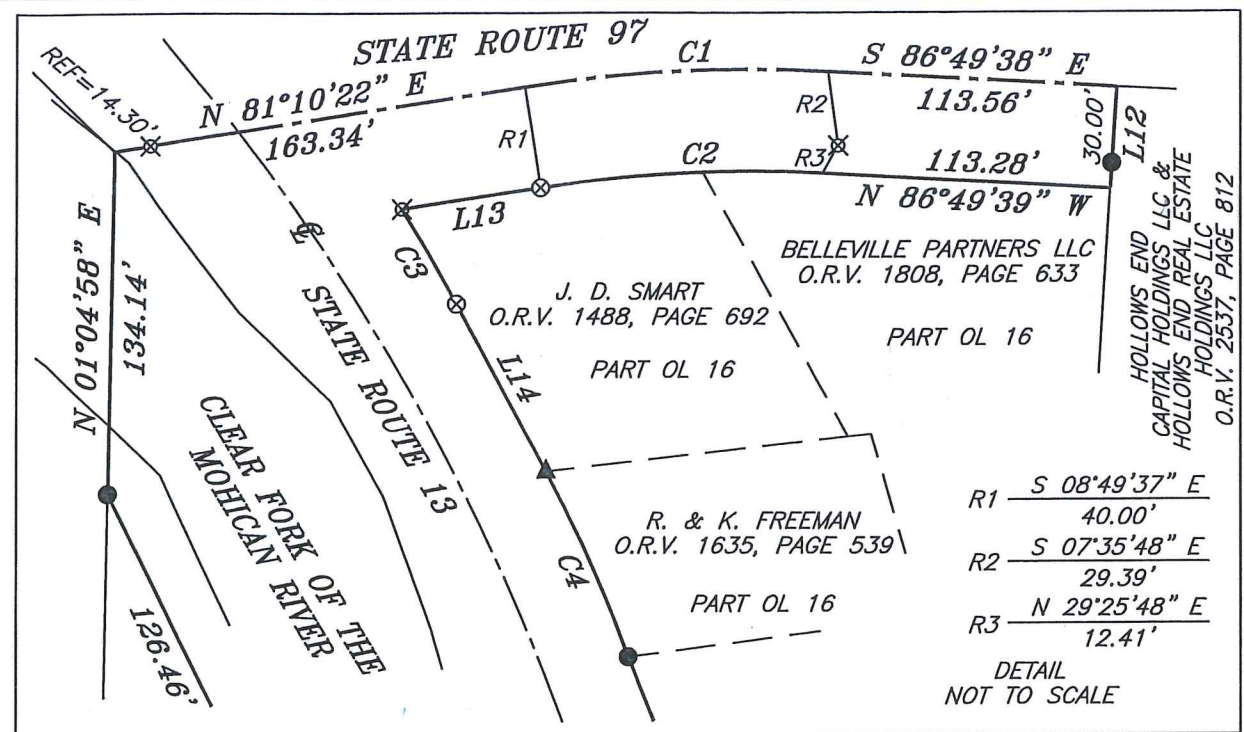


CURVE	RADIUS	DELTA ANGLE	ARC LENGTH	CHORD BEARING	CHORD LENGTH
C1	572.96'	12°00'00"	120.00'	N 87°10'22" E	119.78'
C2	532.96'	12°00'00"	111.62'	S 87°10'23" W	111.42'
C3	669.62'	03°39'51"	42.82'	S 30°03'28" E	42.82'
C4	553.40'	08°14'24"	79.59'	S 24°06'22" E	79.52'
C5	674.07'	11°12'06"	131.78'	S 17°31'00" E	131.58'

LINE	BEARING	DISTANCE	LINE	BEARING	DISTANCE
L1	S 04°40'15" E	182.30'	L8	S 63°21'50" W	61.34'
L2	S 55°13'06" E	190.27'	L9	S 80°22'08" W	71.88'
L3	S 68°38'07" E	290.17'	L10	S 84°53'00" W	74.70'
L4	N 00°24'08" E	67.79'	L11	N 58°55'20" W	80.38'
L5	S 74°20'50" E	231.00'	L12	S 03°33'58" W	40.00'
L6	S 40°00'46" W	194.07'	L13	S 81°10'20" W	55.10'
L7	S 36°09'28" W	74.08'	L14	S 28°13'34" E	74.50'



Chad F. Craig

SURVEY BY: CHAD F. CRAIG P.S. #8195
for SEILER & CRAIG SURVEYING INC.
270 PARK AVENUE WEST
MANSFIELD, OHIO 44902
(419) 525-3644
EMAIL: SEILERANDCRAIG@SEILERANDCRAIG.COM

REFERENCES:
F-1-333
F-1-334
I-423
I-367
N-61

NEW SPLIT
RICHLAND COUNTY
TAX MAP OFFICE
EAK 5-30-19
INITIAL DATE
LL-130

LEGEND

- IRON PIN FOUND
- ⊙ IRON PIPE FOUND
- ⊗ 3" SURVEY MARKER SET IN PAVEMENT
- △ RAILROAD SPIKE SET
- ▲ RAILROAD SPIKE FOUND
- ⊗ 5/8" IRON PIN SET WITH CAP STAMPED "CRAIG 8195"

SURVEY PLAT FOR
PROPERTY TRANSFER

PART OL 16 & PART OL 19, PART SE QTR. SEC. 4, PART NE QTR. SEC. 9 & PART NW QTR. SEC. 10, T-19, R-18, VILLAGE OF BELLVILLE, RICHLAND COUNTY, OHIO

DATE: MAY 13, 2019 SCALE: 1"=200'

JACKSON_BELLVILLE_VILL_2

SEILER & CRAIG SURVEYING, INC.

*Chad F. Craig, PS
270 Park Avenue West
Mansfield, Ohio 44902
Phone: 419-525-3644
Email: seilerandcraig@seilerandcraig.com*

SURVEY DESCRIPTION

PART OUT LOT 16, PART OUT LOT 19
PART OF THE SE QUARTER OF SECTION 4
PART OF THE NE QUARTER OF SECTION 9
AND PART OF THE NW QUARTER OF SECTION 10
VILLAGE OF BELLVILLE, RICHLAND COUNTY, OHIO

Situated in the Village of Bellville, County of Richland, State of Ohio and being a part of Out Lot 16, a part of Out Lot 19, a part of the southeast quarter of Section 4, a part of the northeast quarter of Section 9 and a part of the northwest quarter of Section 10, of Township 19 North, Range 18 West, and being more particularly described as follows:

Beginning for the same at a 3 inch survey marker set in pavement marking the northwest corner of Out Lot 17; Thence, South 04 degrees 40 minutes 15 seconds East with the west line of Out Lot 17, 182.30 feet to an iron pin set

Thence, the following twenty seven (27) courses and distances:

1. South 55 degrees 13 minutes 06 seconds East 190.27 feet to an iron pin set
2. South 68 degrees 38 minutes 07 seconds East 290.17 feet to an iron pin set
3. North 00 degrees 24 minutes 08 seconds East 67.79 feet to an iron pin set on the southwest corner of Out Lot 19
4. South 74 degrees 20 minutes 50 seconds East with the south line of Out Lot 19, a distance of 231.00 feet to an iron pin set
5. Continuing with said south line, North 72 degrees 16 minutes 27 seconds East 478.50 feet to a point in the Clear Fork of the Mohican River and referenced by an iron pin set on a bearing of North 60 degrees 16 minutes 28 seconds West and at a distance of 50.00 feet
6. South 40 degrees 00 minutes 46 seconds West with said river, 194.07 feet to a point referenced by an iron pin found on a bearing of South 00 degrees 59 minutes 38 seconds East and at a distance of 174.16 feet
7. South 36 degrees 09 minutes 28 seconds West with said river, 74.08 feet to a point referenced by an iron pin found on a bearing of South 22 degrees 13 minutes 55 seconds East and at a distance of 123.51 feet
8. South 63 degrees 21 minutes 50 seconds West with said river, 61.34 feet to a point referenced by an iron pin found on a bearing of South 49 degrees 28 minutes 21 seconds East and at a distance of 133.61 feet
9. South 80 degrees 22 minutes 08 seconds West with said river, 71.88 feet to a point referenced by an iron pin found on a bearing of South 55 degrees 14 minutes 33 seconds West and at a distance of 89.63 feet
10. South 84 degrees 53 minutes 00 seconds West with said river, 74.70 feet to a point referenced by an iron pin found on a bearing of South 00 degrees 59 minutes 11 seconds East and at a distance of 44.44 feet

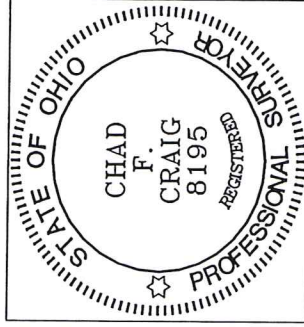
11. North 78 degrees 25 minutes 23 seconds West with said river, 395.25 feet to a point referenced by an iron pin set on a bearing of North 72 degrees 35 minutes 44 seconds East and at a distance of 80.80 feet
12. North 67 degrees 36 minutes 51 seconds West with said river, 446.03 feet to a point referenced by an iron pin found on a bearing of South 00 degrees 02 minutes 44 seconds East and at a distance of 33.92 feet
13. North 58 degrees 55 minutes 20 seconds West with said river, 80.38 feet to a point referenced by an iron pin set on a bearing of South 10 degrees 43 minutes 16 seconds West and at a distance of 9.10 feet
14. North 13 degrees 57 minutes 22 seconds West 293.85 feet to an iron pin found on south line of the southeast quarter of Section 4, the same being on the north line of the northeast quarter of Section 9
15. North 26 degrees 32 minutes 12 seconds West 126.46 feet to an iron pin found on the east line of a parcel currently owned by American Legion Post 535 (O.R.V. 120, Page 478)
16. North 01 degree 04 minutes 58 seconds East with said east line, 134.14 feet to a point in said river and referenced by an iron pin set on a bearing of North 81 degrees 10 minutes 22 seconds East and at a distance of 14.30 feet
17. North 81 degrees 10 minutes 22 seconds East, passing through said reference pin, a total distance of 163.34 feet to a point in the centerline of State Route 97 and referenced by an iron pin set on a bearing of South 08 degrees 49 minutes 37 seconds East and at a distance of 40.00 feet
18. Continuing with said centerline, with a curve to the right, with a central angle of 12 degrees 00 minutes 00 seconds, a radius of 572.96 feet, an arc length of 120.00 feet, on a chord bearing of North 87 degrees 10 minutes 22 seconds East and a chord length of 119.78 feet and referenced by an iron pin set on a bearing of South 07 degrees 35 minutes 48 seconds East and at a distance of 29.39 feet
19. South 86 degrees 49 minutes 38 seconds East with said centerline, 113.56 feet to a point referenced by an iron pin found on a bearing of South 03 degrees 33 minutes 58 seconds West and at a distance of 30.00 feet
20. South 03 degrees 33 minutes 58 seconds West, passing through said reference pin, a total distance of 40.00 feet to a point, said point being the northeast corner of a parcel currently owned by Belleville Partners LLC (O.R.V. 1808, Page 633)
21. North 86 degrees 49 minutes 39 seconds West with the north line of said Belleville Partners LLC parcel, 113.28 feet to a point referenced by an iron pin set on a bearing of North 29 degrees 25 minutes 48 seconds East and at a distance of 12.41 feet
22. Continuing with the north line of said Belleville Partners LLC parcel, with a curve to the left, with a central angle of 12 degrees 00 minutes 00 seconds, a radius of 532.96 feet, an arc length of 111.62 feet, a chord bearing of South 87 degrees 10 minutes 23 seconds West and a chord length of 111.42 feet to a 3 inch survey marker set in pavement on the north line of a parcel currently owned by J.D. Smart (O.R.V. 1488, Page 692) the same being a point on the north line of Out Lot 16
23. South 81 degrees 10 minutes 20 seconds West with said north line, 55.10 feet to an iron pin set on the northwest corner thereof

24. With a curve to the right, with the west line of said parcel and said Out Lot, with a central angle of 03 degrees 39 minutes 51 seconds, a radius of 669.62 feet, an arc length of 42.82 feet, on a chord bearing of South 30 degrees 03 minutes 28 seconds East and a chord length of 42.82 feet to a 3 inch survey marker set in pavement
25. South 28 degrees 13 minutes 34 seconds East with said west line, 74.50 feet to a railroad spike found on the southwest corner thereof, the same being the northwest corner of a parcel currently owned by R. and K. Freeman (O.R.V. 1635, Page 539)
26. With a curve to the right, with the west line of said Freeman parcel, with a central angle of 08 degrees 14 minutes 24 seconds, a radius of 553.40 feet, an arc length of 79.59 feet, on a chord bearing of South 24 degrees 06 minutes 22 seconds East and a chord length of 79.52 feet to an iron pin found on the southwest corner thereof, the same being the northwest corner of a parcel currently owned by M.R. McCune (O.R.V. 2587, Page 418)
27. With a curve to the right, with the west line of said McCune parcel, with a central angle of 11 degrees 12 minutes 06 seconds, a radius of 674.07 feet, an arc length of 131.78 feet, on a chord bearing of South 17 degrees 31 minutes 00 seconds East and at a distance of 131.58 feet to the place of beginning, containing a total of 4.60 acres, of which 1.16 acres are located within a part of the southeast quarter of Section 4 (part of pp# 015-35-062-17-001), 1.58 acres are located within a part of the northeast quarter of Section 9 (part of pp# 015-35-063-01-000), and 1.86 acres are located within a part of the northwest quarter of Section 10 (part of pp# 015-35-063-02-000) according to survey by Chad F. Craig P.S. #8195 for Seiler & Craig Surveying, Inc. on May 13, 2019, but subject to all easements, right of ways and highways of record.

The grantees, his heirs and assigns do hereby covenant and agree that the parcel of land described in this instrument or any portion thereof does not constitute a principal building site under applicable zoning.

Iron pins set are 5/8" rods with caps stamped "CRAIG 8195".

Bearings are based on State Plane Grid North, NAD 83 (2011), Geoid 12A, Ohio North Zone and are intended to be used for angular determination only.



NEW SPLIT
RICHLAND COUNTY
TAX MAP OFFICE

EAK 5-30-19
INITIAL DATE

LL-130

Chad F. Craig

Chad F. Craig P.S. #8195
for Seiler & Craig Surveying, Inc.