

NORTH

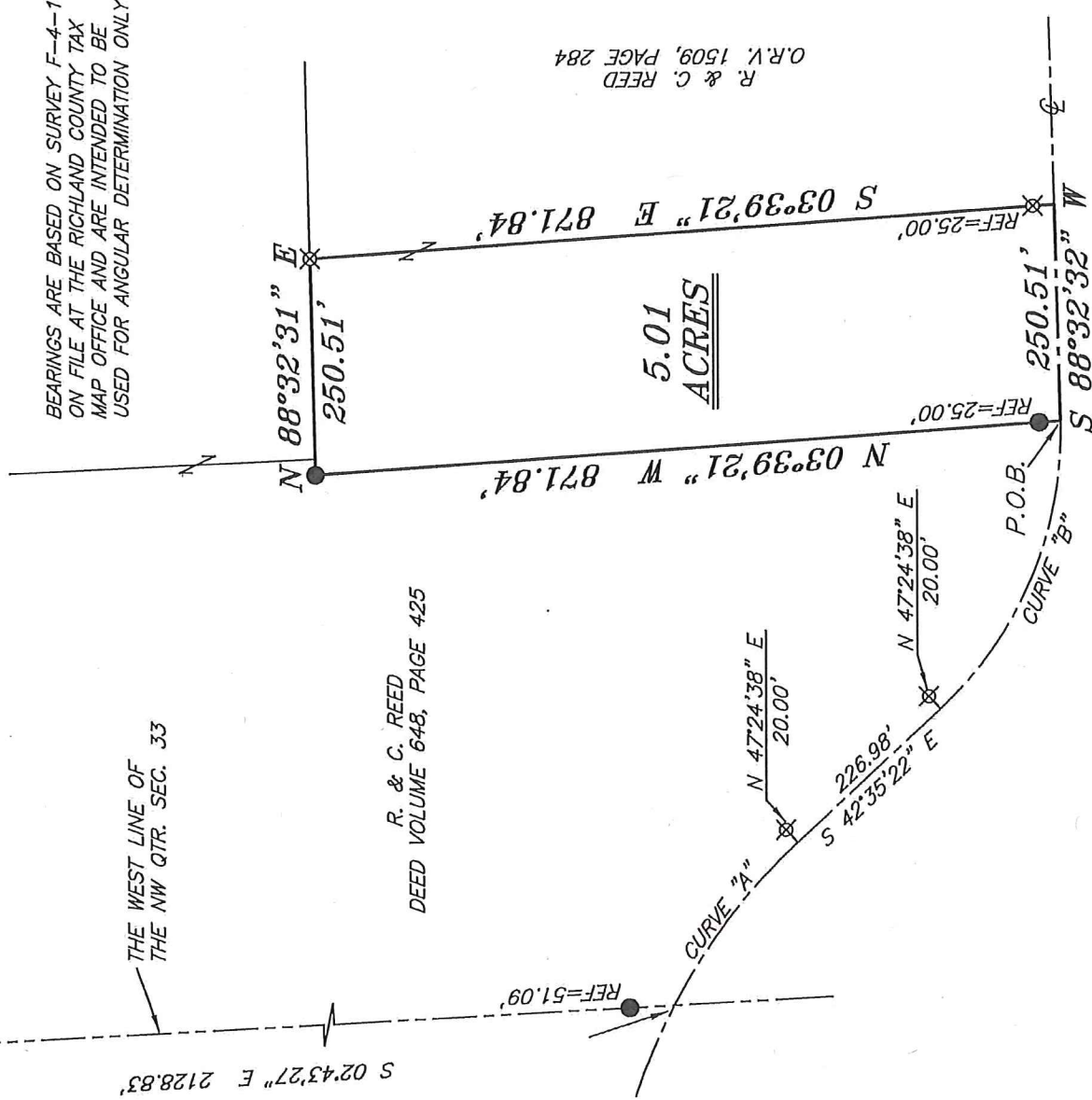


CRIMSON ROAD (T.H. 296)

THE NW CORNER OF
THE NW QTR. SEC. 33

THE WEST LINE OF
THE NW QTR. SEC. 33

BEARINGS ARE BASED ON SURVEY F-4-114
ON FILE AT THE RICHLAND COUNTY TAX
MAP OFFICE AND ARE INTENDED TO BE
USED FOR ANGULAR DETERMINATION ONLY



R. & C. REED
DEED VOLUME 648, PAGE 425

R. & C. REED
O.R.V. 1509, PAGE 284

5.01
ACRES

CURVE "B"
R=437.66'
Δ=48°52'06"
L=373.29'
BRG=S 67°01'25" E
C LEN=362.07'

CURVE "A"
R=685.23'
Δ=19°51'52"
L=237.57'
BRG=S 52°31'18" E
C LEN=236.38'

MT. ZION ROAD (C.H. 285)

NEW SPLIT
RICHLAND COUNTY
TAX MAP OFFICE

EAK 1-24-19

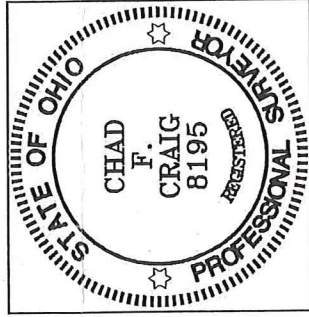
INITIAL

DATE

LL-13

LEGEND

- IRON PIN FOUND
- ⊙ IRON PIPE FOUND
- ⊗ 3" SURVEY MARKER SET
- △ RAILROAD SPIKE FOUND
- ▲ RAILROAD SPIKE FOUND
- ⊗ 5/8" IRON PIN SET WITH CAP STAMPED "CRAIG 8195"



Chad F. Craig

SURVEY BY:
CHAD F. CRAIG P.S. #8195
for SEILER & CRAIG SURVEYING INC.
270 PARK AVENUE WEST
MANSFIELD, OHIO 44902
(419) 525-3644
EMAIL:SEILERANDCRAIG@SEILERANDCRAIG.COM

SURVEY PLAT FOR

R. & C. REED

PART NW QTR. SEC. 33, T-23, R-17
MIFFLIN TOWNSHIP
RICHLAND COUNTY, OHIO

DATE: DECEMBER 14, 2018 SCALE: 1"=200'

RUSS_REED_5.01AC

Kan Dis Coing Inspector (Mifflin Coing)

SEILER & CRAIG SURVEYING, INC.

Chad F. Craig, P.S.
270 Park Avenue West
Mansfield, Ohio 44902
419-525-3644

Email: seilerandcraig@seilerandcraig.com

SURVEY DESCRIPTION

PART OF THE NW QUARTER OF SECTION 33
MIFFLIN TOWNSHIP
RICHLAND COUNTY, OHIO

Situated in the Township of Mifflin, County of Richland, State of Ohio and being a part of the Northwest Quarter of Section 33, of Township 23 North, Range 17 West, and being more particularly described as follows:

Commencing at a railroad spike found and accepted as marking the northwest corner of said quarter, the same as being a point in the centerline of Crimson Road (T.H. 296) and being a point on the west line of said quarter, Thence, Thence, South 02 degrees 43 minutes 27 seconds East with the west line of the northwest quarter, passing through an iron pin found for reference at a distance of 2077.74 feet, a total distance of 2128.83 feet to a point in the centerline of Mt. Zion Road (C.H. 285), Thence, with said centerline and with a curve to the right having a central angle of 19 degrees 51 minutes 52 seconds, a radius of 685.23 feet, an arc length of 237.57 feet, a chord bearing of South 52 degrees 31 minutes 18 seconds East and a chord length of 236.38 feet to a point and referenced by an iron pin set on a bearing of North 47 degrees 24 minutes 38 seconds East and at a distance of 20.00 feet, Thence, South 42 degrees 35 minutes 22 seconds East with said centerline 226.98 feet to a point referenced by an iron pin set on a bearing of North 47 degrees 24 minutes 38 seconds East and at a distance of 20.00 feet, Thence, with said centerline and with a curve to the left having a central angle of 48 degrees 52 minutes 06 seconds, a radius of 437.66 feet, an arc length of 373.29 feet, a chord bearing of South 67 degrees 01 minute 25 seconds East and a chord length of 362.07 feet to a point referenced by an iron pin found on a bearing of North 03 degrees 39 minutes 21 seconds West and at a distance of 25.00 feet, said point marking the place of beginning of the parcel herein described;

Thence, North 03 degrees 39 minutes 21 seconds West passing through said iron pin found, a total distance of 871.84 feet to an iron pin found;

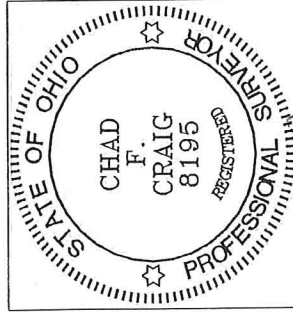
Thence, North 88 degrees 32 minutes 31 seconds East 250.51 feet to an iron pin set;

Thence, South 03 degrees 39 minutes 21 seconds East passing through an iron pin set for reference at distance of 846.84 feet, a total distance of 871.84 feet to a point in said centerline;

Thence, South 88 degrees 32 minutes 32 seconds West with said centerline 250.51 feet to the place of beginning, containing 5.01 acres, according to survey by Chad F. Craig P.S. #8195 for Seiler & Craig Surveying, Inc. on December 14, 2018, but subject to all easements, right of ways and highways of record.

Iron pins set are 5/8" rods with caps stamped "CRAIG 8195".

Bearings are based on Survey F-4-114 on file at the Richland County Tax Map Office and are intended to be used for angular determination only.



Kan

NEW SPLIT
RICHLAND COUNTY
TAX MAP OFFICE

EAK / 1-24-19
INITIAL / DATE
LL-13

Chad F. Craig

Chad F. Craig P.S. #8195
for Seiler & Craig Surveying, Inc.