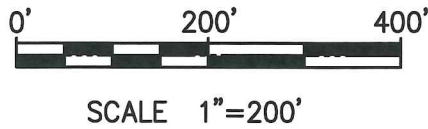
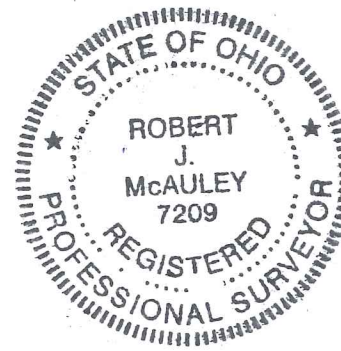


REL F:\2018\118100 City of Mansfield Knight Pkwy\2018_150 FOOT STRIP.dwg User:BobMcCauley Jan 03, 2019 - 9:08am



LEGEND

- - 5/8" DIA. x 30" REBAR SET WITH PLASTIC CAP STAMPED "RICHLAND ENG. RLS 7209".
- ⊠ - SURVEY MARKER FOUND WITH CAP STAMPED "RICHLAND ENG. RLS 7209"
- - 1" IRON PIN IN MONUMENT BOX FD.
- ◆ - 2" MAG NAIL SET



Zoning Approved
[Signature]
City of Mansfield
 Date 1/4/19

NEW SPLIT
 RICHLAND COUNTY
 TAX MAP OFFICE
 EAK 1-8-19
 INITIAL DATE
 LL-4

IRON PIN IN MONUMENT BOX FOUND
 N.E. CORNER, N.E. 1/4,
 SEC. 9

C1 R=320.00' Δ=58°06'03" L=324.50' Brg.=S 59°12'23" W Chd.=310.77'
 C2 R=260.00' Δ=39°51'38" L=180.88' Brg.=S 50°05'11" W Chd.=177.26'
 C3 R=40.00' Δ=109°22'45" L=76.36' Brg.=N 55°17'37" W Chd.=65.28'

BASIS OF BEARING IS THE EAST LINE OF THE NORTHEAST QUARTH OF SECTION 9 BEARING BEING SOUTH 00°36'15" EAST AS CALLED FOR IN PLAT BOOK VOLUME 26 PAGE 114

LINE	BEARING	DISTANCE
L1	S 88°40'05" W	150.01'
L2	N 88°15'25" E	150.03'

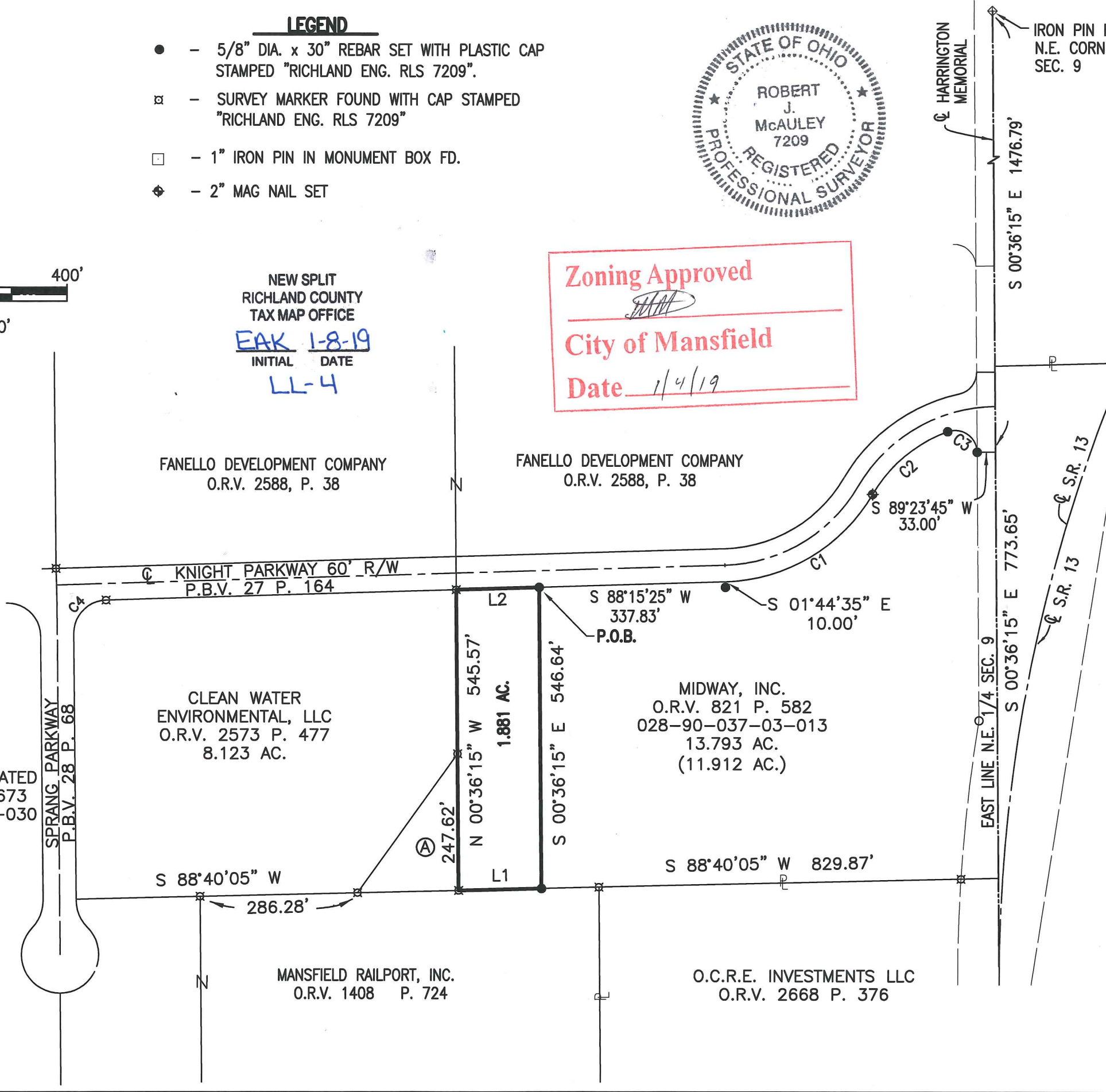
I HEREBY STATE THAT THE FOREGOING SURVEY WAS PREPARED FROM ACTUAL FIELD MEASUREMENTS IN DECEMBER 2018, IN ACCORDANCE WITH CHAPTER 4733-37, OHIO ADMINISTRATIVE CODE

Robert J. McCauley 3 JAN 2019
 ROBERT J. MCCAULEY DATE
 RLS #7209

RICHLAND ENGINEERING LIMITED
 29 N. PARK ST. MANSFIELD, OHIO

**SURVEY FOR THE
 CITY OF MANSFIELD
 1.881 ACRE PARCEL**

Situated in the City of Mansfield and being a part of the Northeast Quarter of Section 9, Township 21, Range 18, Richland County, State of Ohio





RICHLAND ENGINEERING LIMITED

29 North Park Street, Mansfield, Ohio 44902-1769 • 419/524-0074 • FAX 419/524-1812

Celebrating 50 Years of Engineering Excellence

118100

Description 1.881 Acre Parcel

Situated in the City of Mansfield, County of Richland and State of Ohio and being a part of the Northeast Quarter of Section 9, Township 21, Range 18, and being lands now or formerly owned by Midway Inc. as recorded in Official Record Volume 821, Page 582 of the Richland County Recorder's records and being more particularly described as follows:

Commencing at a 1" iron pin found in a monument box at the northeast corner of the Northeast Quarter of Section 9, said point also being on the centerline of Harrington Memorial Road;

Thence South 00 degrees 36 minutes 15 seconds East with the east line of the Northeast Quarter of Section 9 and the centerline of Harrington Memorial Road, a distance of 1,476.79 feet to a point, said point referenced by a survey marker set, South 89 degrees 23 minutes 45 seconds West at a distance of 33.00 feet;

Thence South 89 degrees 23 minutes 45 seconds West a distance of 33.00 feet to a survey marker set on the west right of way line of Harrington Memorial Road;

Thence northwesterly along a curve to the left, with the south right of way line of Knight Parkway (60') as recorded in Plat Book Volume 27, Page 164, having an arc length of 76.36 feet, a delta angle of 109 degrees 22 minutes 45 seconds, a radius of 40.00 feet, a chord bearing North 55 degrees 17 minutes 37 seconds West with a chord distance of 65.28 feet to a survey marker set;

Thence southwesterly along a curve to the left, with the south right of way line of Knight Parkway (60'), having an arc length of 180.88 feet, a delta angle of 39 degrees 51 minutes 38 seconds, a radius of 260.00 feet, a chord bearing South 50 degrees 05 minutes 11 seconds West with a chord distance of 177.26 feet to a 2" mag nail set;

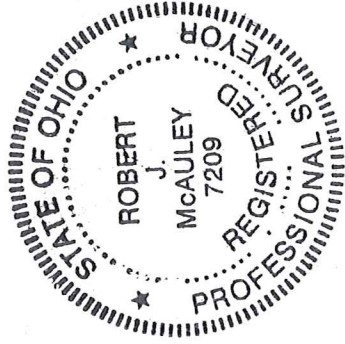
Thence southwesterly along a curve to the right, with the south right of way line of Knight Parkway (60'), having an arc length of 324.50 feet, a delta angle of 58 degrees 06 minutes 03 seconds, a radius of 320.00 feet, a chord bearing South 59 degrees 12 minutes 23 seconds West with a chord distance of 310.77 feet to a point, said point being referenced by a survey marker set, South 01 degree 44 minutes 35 seconds East, a distance of 10.00 feet;

Thence South 88 degrees 15 minutes 25 seconds West with the south right of way line of Knight Parkway (60'), a distance of 337.83 feet to a survey marker set at the **Point of Beginning** of the parcel herein described;

1. Thence **South 00 degrees 36 minutes 15 seconds East** a distance of **546.64 feet** to a survey marker set;
2. Thence **South 88 degrees 40 minutes 05 seconds West** with the property line common to said Midway, Inc. lands and lands now or formerly owned by Mansfield Railroad, Inc. as recorded in Official Record Volume 1408, Page 724 of the Richland County Recorder's records a distance of **150.01 feet** to a survey marker found at the southwest corner of said Midway, Inc. lands;
3. Thence **North 00 degrees 36 minutes 15 seconds West** with a property line common to said Midway Inc. lands and lands now or formerly owned by Clean Water Environmental, LLC lands as recorded in Official Record Volume 2573, Page 477, and lands now or formerly owned by Midway Incorporated as recorded in Official Record Volume 1579, Page 673 of the Richland County Recorder's records, a distance of **545.57 feet** to a survey marker found at the northwest corner of said Midway, Inc. lands, also being the northeast corner of said Clean Water Environmental, LLC lands;
4. Thence **North 88 degrees 15 minutes 25 seconds East** with the south right of way line of said Knight Parkway (60'), a distance of **150.03 feet** to the **Point of Beginning**, containing **1.881 acres** of land more or less, subject to all highways, easements and use restrictions of record.

This description is based on an actual field survey performed by Richland Engineering Limited in December 2018. All bearings are based on the east line of the Northeast Quarter of Section 9 bearing being South 00 degrees 36 minutes 15 seconds East as called for in Plat Book Volume 26, Page 114.

Survey markers set and found are 5/8" diameter by 30" long rebar with cap stamped Richland Eng. RLS 7209".



Robert J. McAuley
 Robert J. McAuley
 RLS 7209
 Date 3 JAN 2019

NEW SPLIT
 RICHLAND COUNTY
 TAX MAP OFFICE
 INITIAL EAK DATE 1-8-19
 INITIAL LL-4