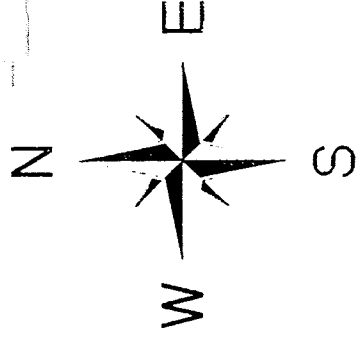


SURVEY PLAT

For Tom McFarland
 Part Northeast Quarter, Section 18
 Monroe Township, T-22, R-17
 Richland County, Ohio



Scale: 1" = 200'

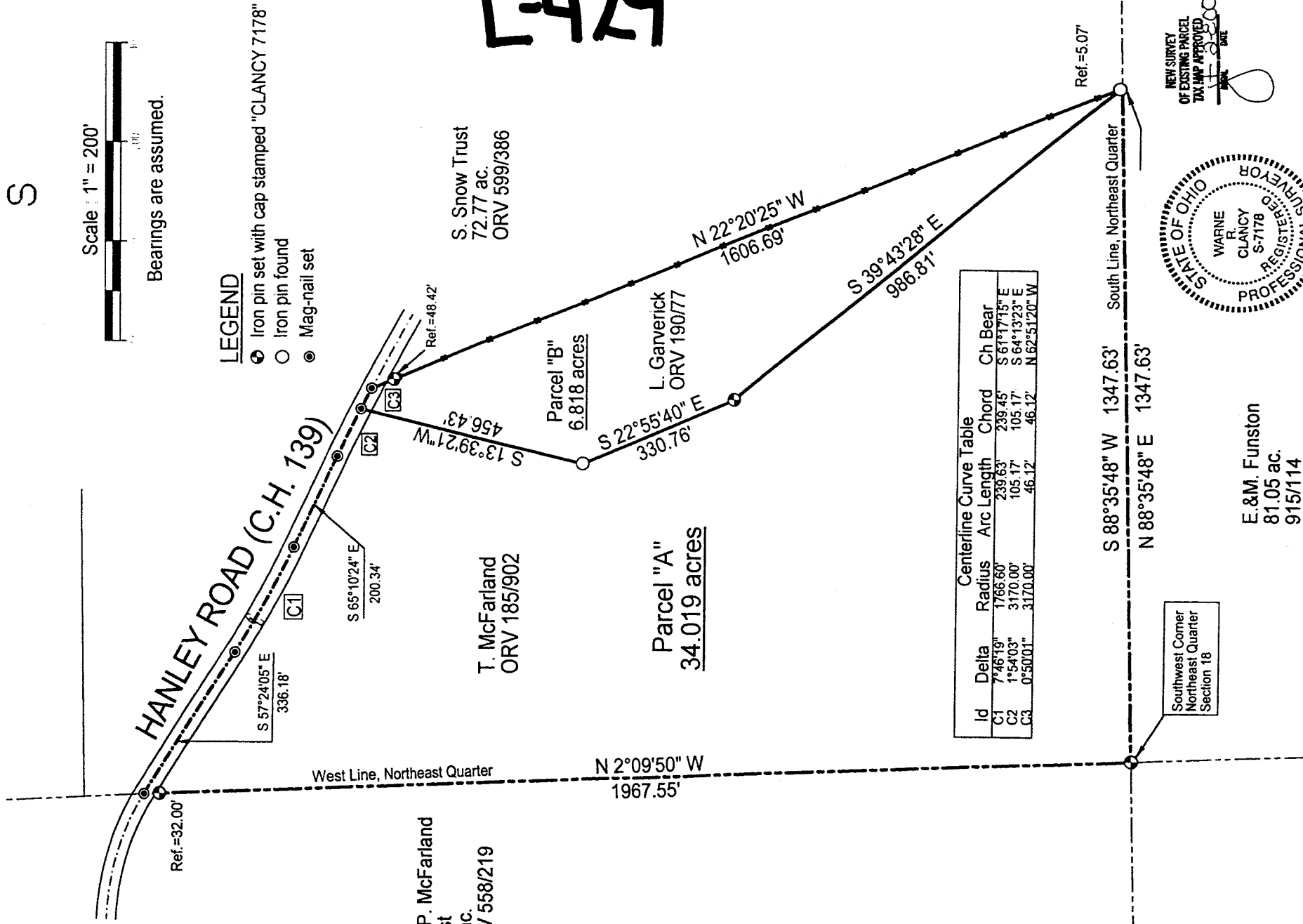


Bearings are assumed.

LEGEND

- Iron pin set with cap stamped "CLANCY 7178"
- Iron pin found
- Mag-nail set

L-429



G.&P. McFarland
 Trust
 80 ac.
 ORV 558/219

T. McFarland
 ORV 185/902

Parcel "A"
34.019 acres

Parcel "B"
6.818 acres

L. Garverick
 ORV 190/77

S. Snow Trust
 72.77 ac.
 ORV 599/386

Ref.=5.07'

South Line, Northeast Quarter

S 88°35'48" W 1347.63'

N 88°35'48" E 1347.63'

E.&M. Funston
 81.05 ac.
 915/114



NEW SURVEY
 OF EXISTING PARCEL
 TAX MAP APPROVED

DATE: 020400

JOB NO.: W081699

Wayne R. Clancy
 Wayne R. Clancy
 P.S.#178

SURVEY DESCRIPTION

**Part Northeast Quarter, Section 18
Monroe Township, T-22, R-17
Richland County, Ohio**

Situated in the Township of Monroe, County of Richland, State of Ohio, and being a part of the Northeast Quarter of Section 18 of Township 22, Range 17, more particularly described as follows:

Commencing for the same at an iron pin set marking the southwest corner of said northeast quarter; Thence, North 88 degrees 35 minutes 48 seconds East with the south line of said quarter, a distance of 1347.63 feet to the southwesterly corner of an existing 72.77 acre parcel owned by the S. Snow Trust (ORV599/386), the Place of Beginning;

Thence, North 22 degrees 20 minutes 25 seconds West with a westerly line of said parcel, passing an iron pin found for reference at 5.07 feet and an iron pin set for reference at 1558.27 feet, a distance of 1606.69 feet to a Mag-nail set on the centerline of Hanley Road (C.H. 139);

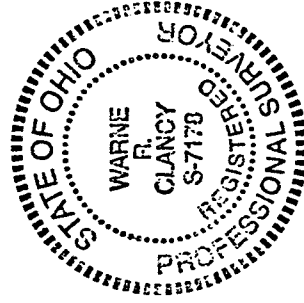
Thence, with said centerline along a curve to the left, defined by a 00 degree 50 minute 01 second central angle, a 3170.00 foot radius, a 46.12 foot arc, and a 46.12 foot chord which bears North 62 degrees 51 minutes 20 seconds West, to a Mag-nail set marking the northeasterly corner of an existing parcel owned by T. McFarland (ORV 185/902);

Thence, with said parcel the following three (3) courses:

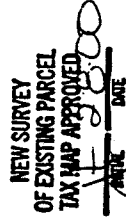
1. South 13 degrees 39 minutes 21 seconds West, a distance of 456.43 feet to an iron pin found;
2. South 22 degrees 55 minutes 40 seconds East, a distance of 330.76 feet to an iron pin set;
3. South 39 degrees 43 minutes 28 seconds East, a distance of 986.81 feet to the Place of Beginning, containing 6.818 acres according to survey by Warne R. Clancy, Professional Surveyor #7178, on August 16, 1999.

Iron pins set are #5 rebars with caps stamped "CLANCY 7178".

Bearings are assumed.



Parcel "B" - 6.818 ac.



Warne R. Clancy
Warne R. Clancy
Professional Surveyor #7178

L-429

SURVEY DESCRIPTION

**Part Northeast Quarter, Section 18
Monroe Township, T-22, R-17
Richland County, Ohio**

Situated in the Township of Monroe, County of Richland, State of Ohio, and being a part of the Northeast Quarter of Section 18 of Township 22, Range 17, more particularly described as follows:

Beginning for the same at an iron pin set marking the southwest corner of said northeast quarter; Thence, North 02 degrees 09 minutes 50 seconds West with the west line of said quarter, passing an iron pin set for reference at 1935.55 feet, a distance of 1967.55 feet to a Mag-nail set marking its intersection with Hanley Road (C.H. 139);

Thence, South 57 degrees 24 minutes 05 seconds East with said centerline, a distance of 336.18 feet to a Mag-nail set marking a point of curvature thereon;

Thence, continuing with said centerline along a curve to the left, defined by a 07 degree 46 minute 19 second central angle, an 1766.60 foot radius, a 239.63 foot arc, and a 239.45 foot chord which bears South 61 degrees 17 minutes 15 seconds East, to a Mag-nail set marking its point of tangency;

Thence, continuing with said centerline South 65 degrees 10 minutes 24 seconds East, a distance of 200.34 feet to a Mag-nail set marking a point of curvature thereon;

Thence, continuing with said centerline along a curve to the right, defined by a 01 degree 54 minute 03 second central angle, a 3170.00 foot radius, an 105.17 foot arc, and an 105.17 foot chord which bears South 64 degrees 13 minutes 23 seconds East, to a Mag-nail set marking a northerly corner of an existing parcel owned by L. Garverick (ORV 190/77);

Thence, with the westerly boundary of said Garverick parcel the following three (3) courses:

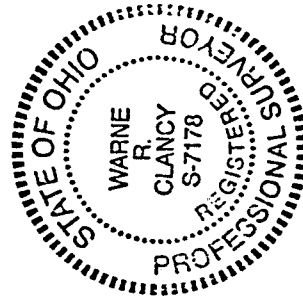
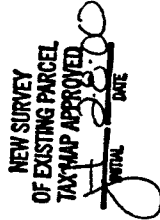
1. South 13 degrees 39 minutes 21 seconds West, a distance of 456.43 feet to an iron pin found;
2. South 22 degrees 55 minutes 40 seconds East, a distance of 330.76 feet to an iron pin set;
3. South 39 degrees 43 minutes 28 seconds East, a distance of 986.81 feet to a point on south line of said quarter, as referenced by an iron pin found North 22 degrees 20 minutes 25 seconds West, a distance of 5.07 feet;

Thence, South 88 degrees 35 minutes 48 seconds West with said south line, a distance of 1347.63 feet to the Place of Beginning, containing 34.019 acres according to survey by Warne R. Clancy, Professional Surveyor #7178, on August 16, 1999.

Iron pins set are #5 rebars with caps stamped "CLANCY 7178".

Bearings are assumed.

Parcel "A" - 34.019 ac.



Warne R. Clancy
Warne R. Clancy
Professional Surveyor #7178

L-429