

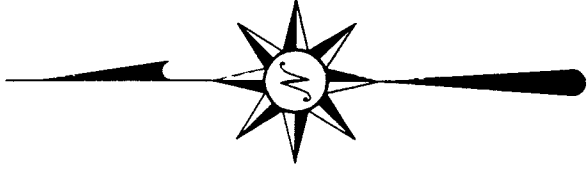
● IRON PIN FOUND



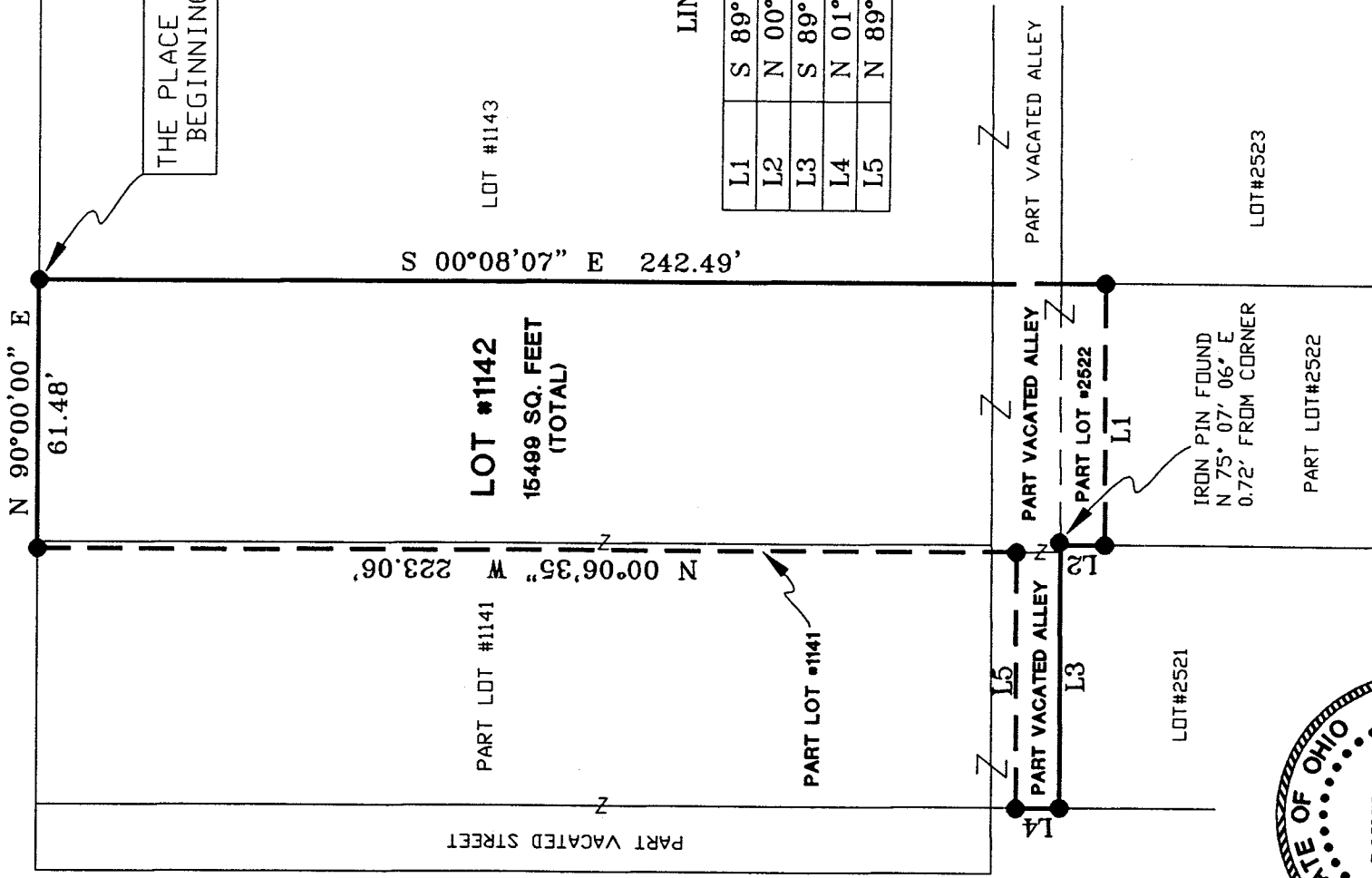
SCALE: 1" = 40'

GRAND BOULEVARD 150' R/W

NORTH



LEIGHTY AVENUE 30' R/W

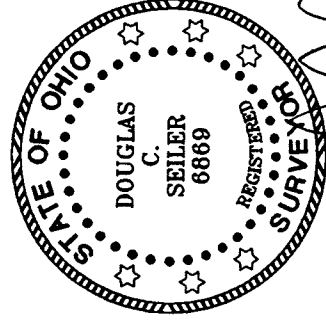


L-359

LINE TABLE

L1	S 89°31'38" W	59.88'
L2	N 00°22'07" W	10.00'
L3	S 89°36'39" W	60.00'
L4	N 01°13'02" W	9.89'
L5	N 89°33'57" E	58.53'

BEARINGS ARE BASED ON AN ASSUMED MERIDIAN, AND ARE INTENDED TO BE USED FOR ANGULAR DETERMINATION ONLY.



SURVEYED BY: Douglas C. Seiler 12/17/99
 PROFESSIONAL SURVEYOR #6869
 52 1/2 NORTH MAIN STREET
 MANSFIELD, OHIO 44902
 (419) 525-3644
 FAX: 525-3696

NEW SURVEY OF EXISTING PARCEL TAX MAP APPROVED
 INITIAL DATE

LOT #1142 12,959 SQ. FT.
 PART LOT #1141 326 SQ. FT.
 PART LOT #2522 599 SQ. FT.
 PART VAC. ALLEY 1615 SQ. FT.

SURVEY PLAT FOR	
COMPTON	
LOT #1142, PART LOT #1141, PART LOT #2522 & PART VACATED ALLEY CITY OF SHELBY, RICHLAND COUNTY, OHIO	
DATE: DECEMBER 14, 1999 SCALE: 1"=40'	

Douglas C. Seiler

Professional Land Surveyor

52½ North Main • Mansfield, Ohio 44902
(419) 525-3644 • FAX (419) 525-3696

SURVEY DESCRIPTION

LOT #1142, PART OF LOT #1141,
PART OF LOT #2522, and
PART VACATED ALLEY
CITY OF SHELBY, OHIO

Situated in the City of Shelby, County of Richland, State of Ohio and being known as Lot #1142, part of Lot #1141, part of Lot #2522, and part of a vacated alley in said city, more particularly described as follows:

Beginning for the same at an iron pin found and accepted as marking the northeast corner of said Lot #1142; Thence, South 00 degrees 08 minutes 07 seconds East with the east line of said lot and the south-early prolongation thereof, a distance of 242.49 feet to an iron pin found;

Thence, South 89 degrees 31 minutes 38 seconds West a distance of 59.88 feet to an iron pin found;

Thence, North 00 degrees 22 minutes 07 seconds West a distance of 10.00 feet to a point as referenced by an iron pin found on a bearing of North 75 degrees 07 minutes 06 seconds East and a distance of 0.72 of a foot from said point;

Thence, South 89 degrees 36 minutes 39 seconds West a distance of 60.00 feet to an iron pin found on the east line of Leichty Avenue;

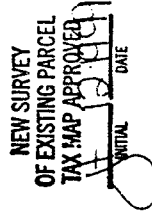
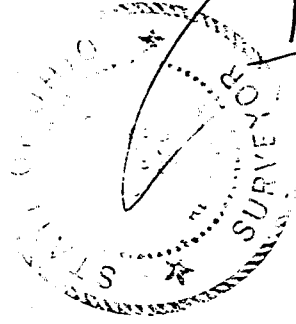
Thence, North 01 degree 13 minutes 02 seconds West with said east line, a distance of 9.89 feet to an iron pin found;

Thence, North 89 degrees 33 minutes 57 seconds East a distance of 58.53 feet to an iron pin found;

Thence, North 00 degrees 06 minutes 35 seconds West a distance of 223.06 feet to an iron pin found on the south line of Grand Boulevard;

Thence, North 90 degrees 00 minutes 00 seconds East with said south line, a distance of 61.48 feet to the place of beginning, containing a total of 15499 square feet, of which 12959 square feet is in Lot #1142, 326 square feet is in part Lot #1141, 599 square feet is in part Lot #2522 and 1615 square feet is in part vacated alley, according to survey by Douglas C. Seiler, Professional Surveyor #6869 on December 16, 1999.

Bearings are based on an assumed meridian and are intended to be used for angular determination only.



Douglas C. Seiler
Professional Surveyor #6869

L-359