

SURVEY DESCRIPTION

Part Northwest Quarter - Section 27
Perry Township - T-19, R-19
Richland County, Ohio

Situated in the Township of Perry, County of Richland, State of Ohio, and being a part of the Northwest Quarter of Section 27 of Township 19, Range 19, more particularly described as follows:

Beginning for the same at a Railroad spike set marking the intersection of the south line of said northwest quarter with the centerline of Werner Road (T.H. 145); Thence northeasterly along a curve to the left, defined by a 08 degree 15 minute 17 second central angle, an 815.52 foot radius, an 117.49 foot arc, and an 117.39 foot chord which bears North 16 degrees 47 minutes 26 seconds East, to a Mag-nail set marking its point of tangency;

Thence, continuing with said centerline North 12 degrees 39 minutes 48 seconds East, a distance of 240.71 feet to a Mag-nail set marking a point of curvature thereon;

Thence, continuing with said centerline along a curve to the right, defined by a 20 degree 39 minute 57 second central angle, a 1007.20 foot radius, a 363.28 foot arc, and a 361.32 foot chord which bears North 22 degrees 59 minutes 46 seconds East, to a Mag-nail set marking its point of tangency;

Thence, South 80 degrees 14 minutes 46 seconds East, passing an iron pin set for reference at 24.79 feet, a distance of 826.90 feet to an iron pin set;

Thence, South 89 degrees 27 minutes 05 seconds East, a distance of 1011.45 feet to an iron pin set on the east line of said quarter;

Thence, South 01 degrees 22 minutes 06 seconds East with said east line, a distance of 208.14 feet to an iron pin set at its intersection with the northwesterly right-of-way line of Interstate 71;

Thence, South 58 degrees 49 minutes 34 seconds West with said right-of-way line, a distance of 304.01 feet to an iron pin set thereon;

Thence, continuing with said right-of-way line South 59 degrees 50 minutes 58 seconds West, a distance of 356.17 feet to an iron pin set at its intersection with the south line of said northwest quarter;

Thence, North 89 degrees 27 minutes 05 seconds West with said south line, passing an iron pin set for reference 1459.12 feet, a distance of 1491.12 feet to the Place of Beginning, containing 24.210 acres according to survey by Warne R. Clancy, Professional Surveyor #7178, on May 5, 1999.

Iron pins set are #5 rebars with caps stamped "CLANCY 7178".

Bearings are based on Centerline Survey Plat RIC-1-0.00.

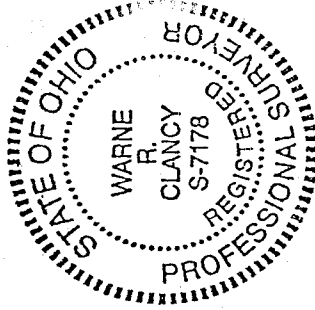
See L-999

NEW SPLIT
TAX MAP APPROVED
DATE 7-8-99
INITIAL

PARCEL "A" - 24.210 AC.

Warne R. Clancy

Warne R. Clancy
Professional Surveyor #7178



APPROVED
PERRY TOWNSHIP
ZONING INSPECTOR

Bruce Averell

191

SURVEY DESCRIPTION

Part Northwest Quarter - Section 27
Perry Township - T-19, R-19
Richland County, Ohio

Situated in the Township of Perry, County of Richland, State of Ohio, and being a part of the Northwest Quarter of Section 27 of Township 19, Range 19, more particularly described as follows:

Commencing for the same at a Railroad spike set marking the intersection of the south line of said northwest quarter with the centerline of Werner Road (T.H. 145); Thence northeasterly along a curve to the left, defined by a 08 degree 15 minute 17 second central angle, an 815.52 foot radius, an 117.49 foot arc, and an 117.39 foot chord which bears North 16 degrees 47 minutes 26 seconds East, to a Mag-nail set marking its point of tangency; Thence, continuing with said centerline North 12 degrees 39 minutes 48 seconds East, a distance of 240.71 feet to a Mag-nail set marking a point of curvature thereon; Thence, continuing with said centerline along a curve to the right, defined by a 20 degree 39 minute 57 second central angle, a 1007.20 foot radius, a 363.28 foot arc, and a 361.32 foot chord which bears North 22 degrees 59 minutes 46 seconds East, to a Mag-nail set marking its point of tangency, the Place of Beginning;

Thence, continuing with said centerline North 33 degrees 19 minutes 45 seconds East, a distance of 152.12 feet to a Mag-nail set thereon;

Thence, continuing with said centerline North 27 degrees 40 minutes 01 seconds East, a distance of 260.44 feet to a Railroad spike set marking the southwest corner of an existing 11.18 acre parcel owned by S.&P. Edgar (699/790);

Thence, South 86 degrees 50 minutes 06 seconds East with the south line of said 11.18 acres, a distance of 1614.30 feet to an iron pin found marking the southeast corner thereof, the same being a point on the east line of said northwest quarter;

Thence, South 01 degrees 22 minutes 06 seconds East with said east line, a distance of 418.52 feet to an iron pin set thereon;

Thence, North 89 degrees 27 minutes 05 seconds West, a distance of 1011.45 feet to an iron pin set;

Thence, North 80 degrees 14 minutes 46 seconds West, passing an iron pin set for reference at 802.11 feet, a distance of 826.90 feet to the Place of Beginning, containing 17.073 acres according to survey by Warne R. Clancy, Professional Surveyor #7178, on May 5, 1999.

Iron pins set are #5 rebars with caps stamped "CLANCY 7178".

Bearings are based on Centerline Survey Plat RIC-1-0.00.

PARCEL "B" - 17.073 AC.

Warne R. Clancy

Warne R. Clancy
Professional Surveyor #7178



APPROVED
PERRY TOWNSHIP
ZONING INSPECTOR

Bruce A. Orvell

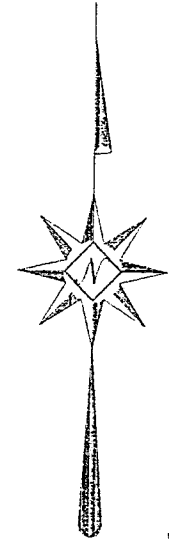
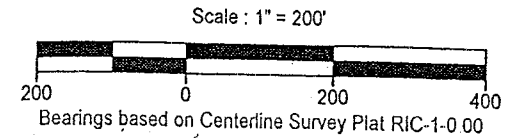
NEW SPLIT
TAX MAP APPROVED
EAK 7-8-99
INITIAL DATE

5.91

SURVEY PLAT

L91

For M. & L. Werner
 Part Northwest Quarter - Section 27
 Perry Township - T-19, R-19
 Richland County, Ohio



NEW SPLIT
 TAX MAP APPROVED
 EAK 7-8-99
 INITIAL DATE

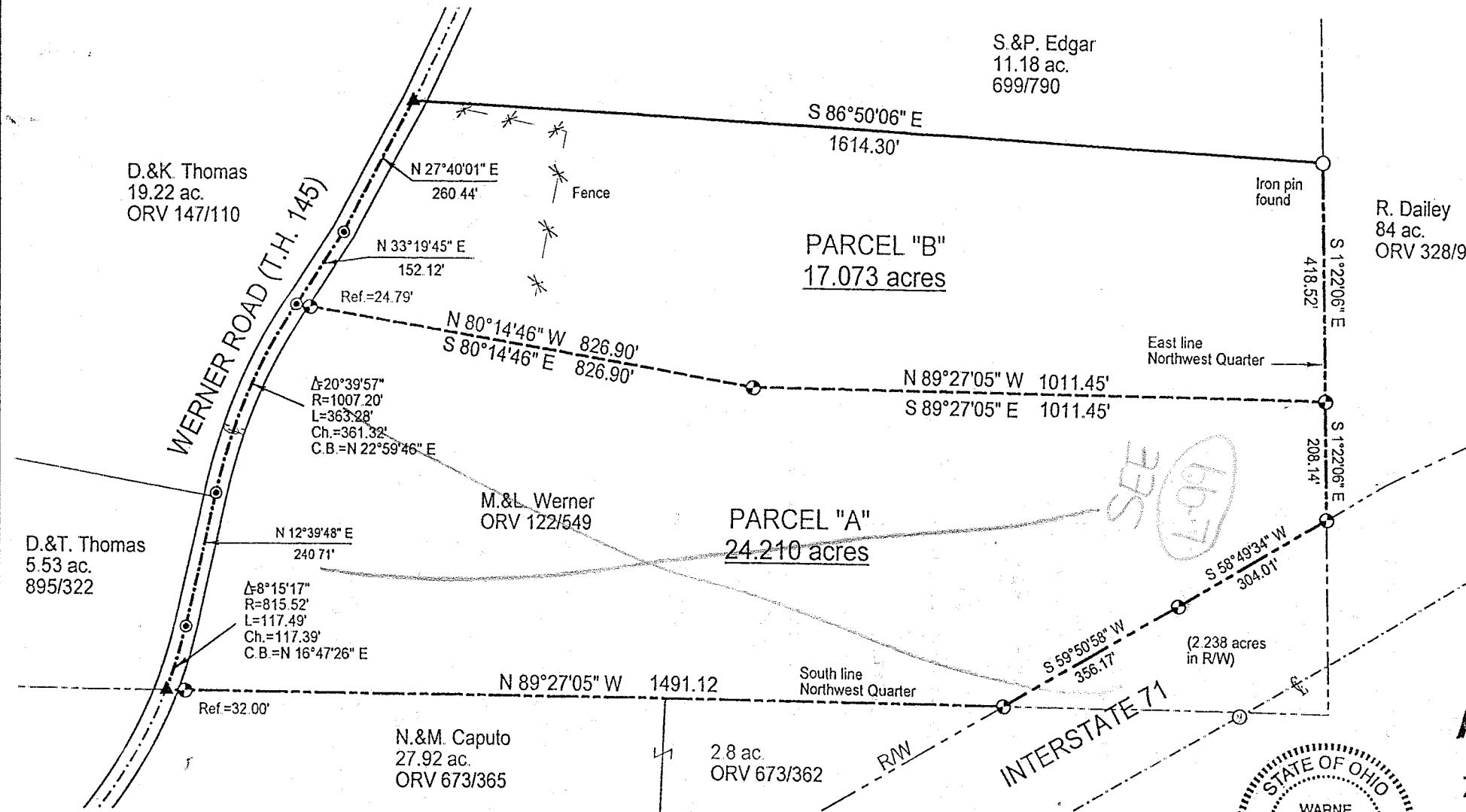
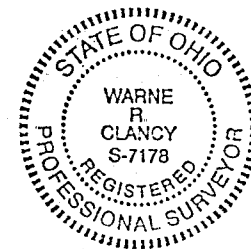
LEGEND

- ⊙ Iron pin set with cap stamped "CLANCY 7178"
- ⊙ Mag-nail set
- ▲ Railroad spike set

APPROVED
 PERRY TOWNSHIP
 ZONING INSPECTOR

Bruce Dorell

Warne R. Clancy
 Warne R. Clancy P.S. #7178



DATE: 6/8/99
 JOB NO.: W050599