

**BOUNDARY SURVEY FOR : THE VILLAGE OF BELLVILLE
PART OF THE NORTHWEST QUARTER OF SECTION 9, TOWNSHIP 19-N,
RANGE 18-W, JEFFERSON TOWNSHIP, RICHLAND COUNTY, OHIO**

CURVE "A"

R=1142.98'
L=89.33'
 $\Delta = 4^{\circ}28'40''$
T=44.69'
CH. BRG.=S 66°56'49" E
CH. DIST.=89.31'

CURVE "B"

R=1142.98'
L=137.08'
 $\Delta = 6^{\circ}52'19''$
T=68.62'
CH. BRG.=S 61°16'20" E
CH. DIST.=137.00'

SOUTHSIDE DEVELOPMENT CO.
ORV. 1159 PG. 683

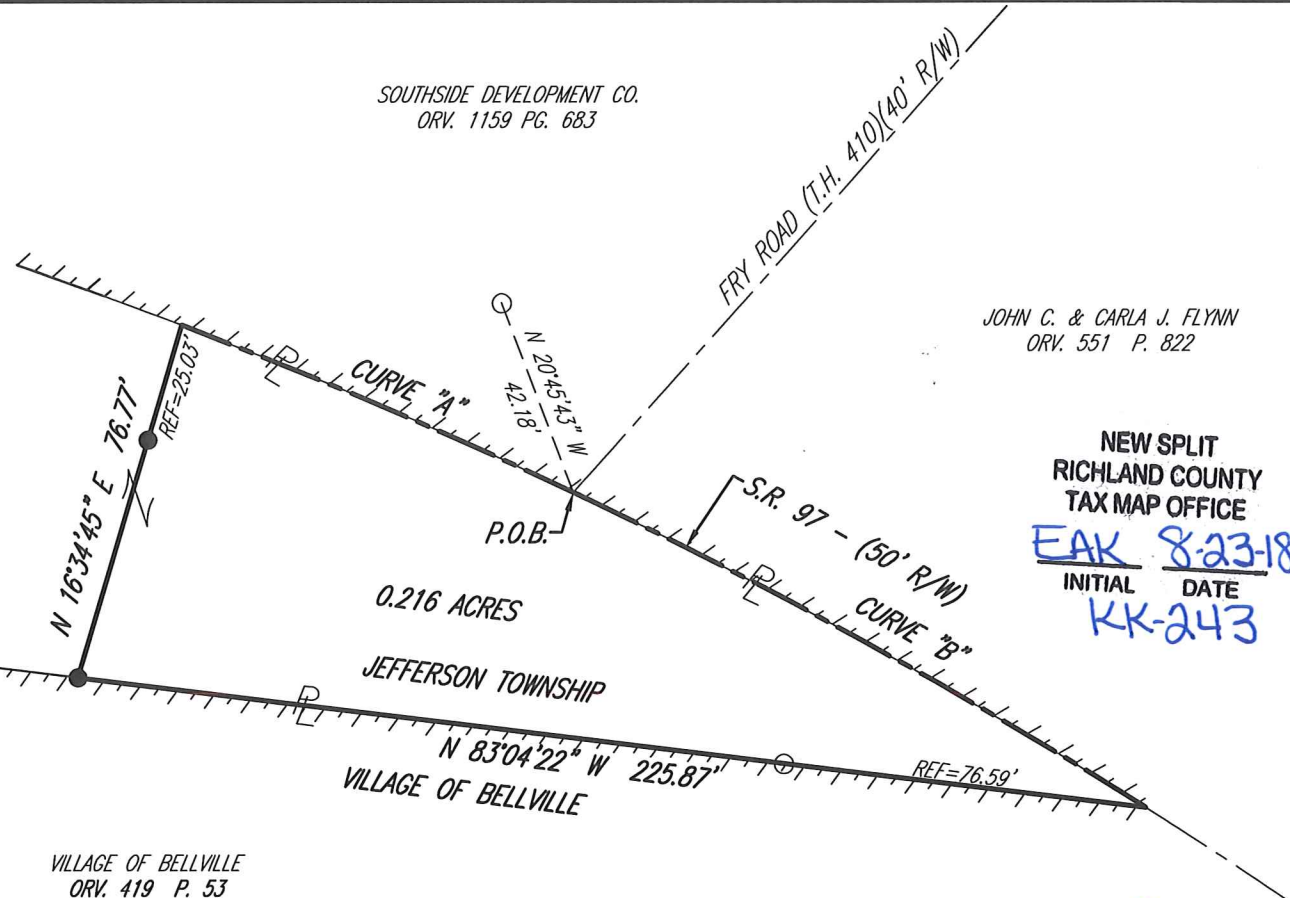
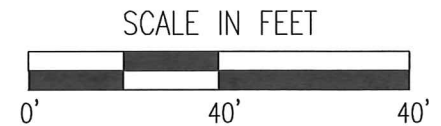
JOHN C. & CARLA J. FLYNN
ORV. 551 P. 822

PENSCO TRUST CO. CUSTODIAN OF JAMES O. WILSON
SOLO(K) PLAN FBO JAMES O. WILSON ACCT#1064
ORV. 2101 P. 407

OHIO RICHLAND PROPERTIES LLC A
FLORIDA LIMITED LIABILITY COMPANY
ORV. 1964 P. 587

VILLAGE OF BELLVILLE
ORV. 419 P. 53

NEW SPLIT
RICHLAND COUNTY
TAX MAP OFFICE
EAK 8-23-18
INITIAL DATE
KK-243



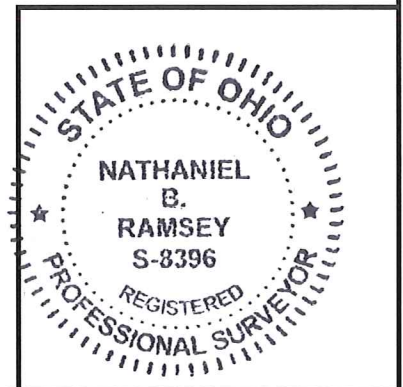
LEGEND

- IRON PIN SET - 5/8" REBAR WITH CAP STAMPED "McCartney S-7921"
- IRON PIN FOUND
- △ RAILROAD SPIKE FOUND
- ▄ BELLVILLE CORPORATION LIMIT

BASIS OF BEARINGS :

BEARINGS ARE RELATIVE TO THE OHIO STATE PLANE
COORDINATE SYSTEM NAD83(2011) AS DERIVED FROM GPS
OBSERVATIONS MADE JUNE 2018 AND ARE FOR THE PURPOSE
OF DETERMINING DIRECTIONAL VARIATIONS.

Nathaniel B. Ramsey
NATHANIEL B. RAMSEY, P.S. OHIO
REGISTERED PROFESSIONAL SURVEYOR NO.
S-8396 JULY 2018
For K.E. McCartney & Associates, Inc.



52 N. Diamond Street
Mansfield, Ohio 44902
Phone: 419/525-0093
Fax: 419/525-0635

KEM

K.E. McCARTNEY & ASSOCIATES
ENGINEERS · PLANNERS · SURVEYORS

526 E. Broad Street
Elyria, Ohio 44035
Phone: 440/323-9608
Fax: 440/323-3644

