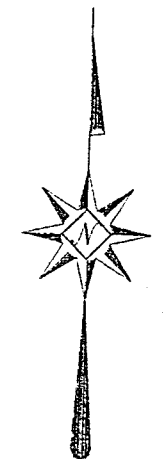
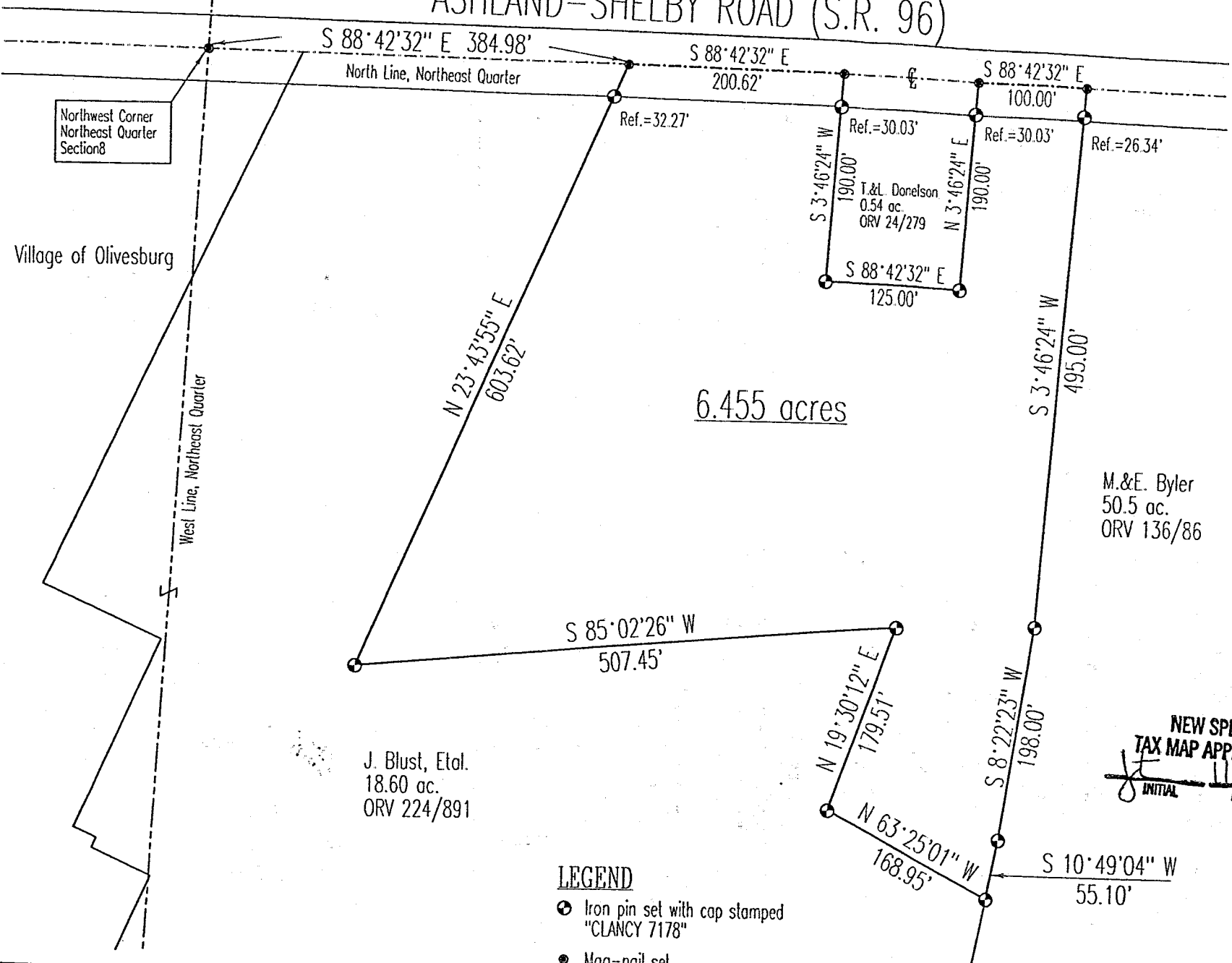


K-160

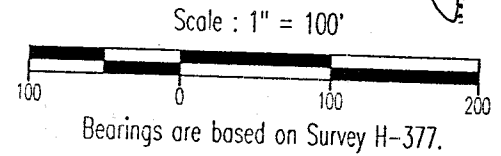
ASHLAND-SHELBY ROAD (S.R. 96)

SURVEY PLAT

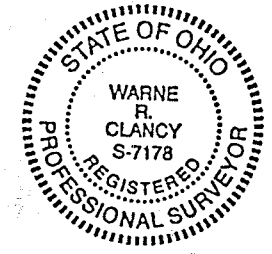
For James Blust
Part Northeast Quarter, Section 8
Weller Township, T-24, R-17
Richland County, Ohio



CONFORMS TO WELLER TOWNSHIP,
ZONING RESOLUTION THIS DATE
Warne R. Clancy
ZONING INSPECTOR



NEW SPLIT
TAX MAP APPROVED
INITIAL DATE
JE 11-5-98



Warne R. Clancy
Warne R. Clancy P.S. #7178

- LEGEND**
- Iron pin set with cap stamped "CLANCY 7178"
 - Mag-nail set

DATE: 10/27/98
JOB NO: W101998

SURVEY DESCRIPTION

Part Northeast Quarter, Section 8
Weller Township, T-24, R-17
Richland County, Ohio

Situated in the Township of Weller, County of Richland, State of Ohio, and being a part of the Northeast Quarter of Section 8 of Township 24, Range 17, more particularly described as follows:

Commencing for the same at a Mag-nail set marking the northwest corner of said northeast quarter, the same being a point on the centerline of the Ashland-Shelby Road (S.R.-96); Thence, South 88 degrees 42 minutes 32 seconds East with the north line of said quarter and said centerline, a distance of 384.98 feet to a Mag-nail set, the Place of Beginning;

Thence, continuing with said north and centerlines South 88 degrees 42 minutes 32 seconds East, a distance of 200.62 feet to a Mag-nail set marking the northwest corner of an existing 0.54 acre parcel owned by T.&L. Donelson (ORV 24/279);

Thence, South 03 degrees 46 minutes 24 seconds West with the west line of said parcel, passing an iron pin set for reference at 30.03 feet, a distance of 190.00 feet to an iron pin set marking the southwest corner thereof;

Thence, South 88 degrees 42 minutes 32 seconds East with the south line of said parcel, a distance of 125.00 feet to an iron pin set marking the southeast corner thereof;

Thence, North 03 degrees 46 minutes 24 seconds East with the east line of said parcel, passing an iron pin set for reference at 159.97 feet, a distance of 190.00 feet to a Mag-nail set on said centerline;

Thence, South 88 degrees 42 minutes 32 seconds East with said centerline, a distance of 100.00 feet to a Mag-nail set marking the northwest corner of an existing 50.5 acre parcel owned by M.&E.Byler (ORV 136/86);

Thence, South 03 degrees 46 minutes 24 seconds West with the west line of said parcel, passing an iron pin set for reference at 26.34 feet, a distance of 495.00 feet to an iron pin set at an angle point thereon;

Thence, South 08 degrees 22 minutes 23 seconds West with said west line, a distance of 198.00 feet to an iron pin set at an angle point thereon;

Thence, South 10 degrees 49 minutes 04 seconds West with said west line, a distance of 55.10 feet to an iron pin set;

Thence, North 63 degrees 25 minutes 01 seconds West, a distance of 168.95 feet to an iron pin set;

Thence, North 19 degrees 30 minutes 12 seconds East, a distance of 179.51 feet to an iron pin set;

Thence, South 85 degrees 02 minutes 26 seconds West, a distance of 507.45 feet to an iron pin set;

Thence, North 23 degrees 43 minutes 55 seconds East, passing an iron pin set for reference at 571.35 feet, a distance of 603.62 feet to the Place of Beginning, containing 6.455 acres according to survey by Warne R. Clancy, Professional Surveyor #7178 on October 19, 1998.

K-160

K-160

K-160

Iron pins set are #5 rebars with caps stampe "CLANCY 7178".

Bearings are based on Survey H-377.

K-160



Warn R. Clancy

 Warn R. Clancy
 Professional Surveyor #7178

NEW SPILT
 TAX MAP APPROVED
 INITIAL *WC* DATE 11-5-03