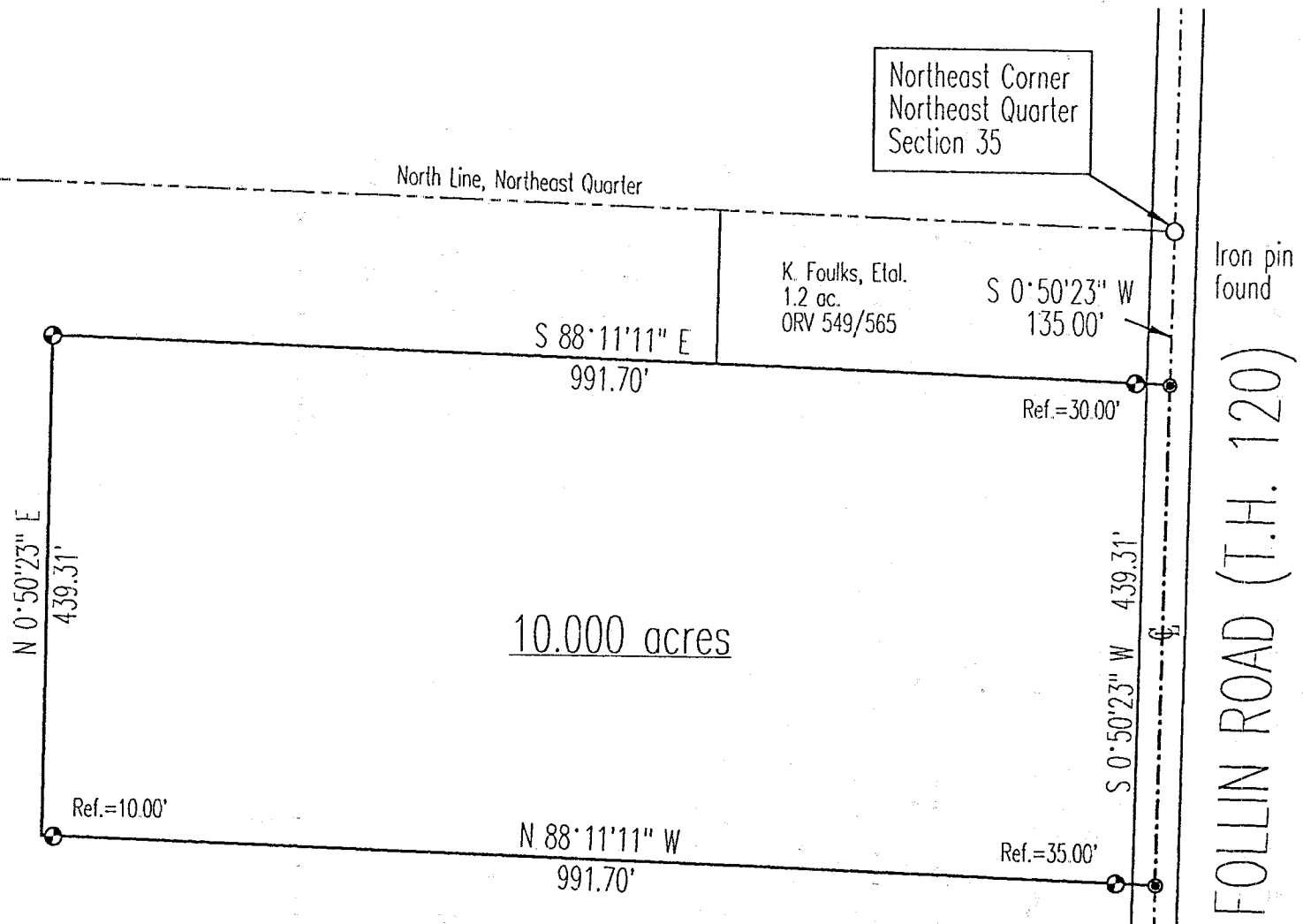


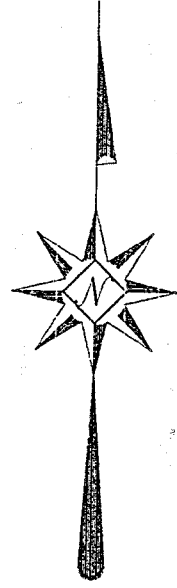
K-98

SURVEY PLAT

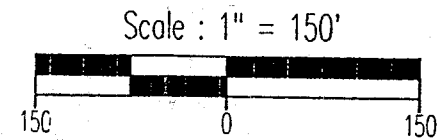
For M. & A. Kissel
Part Northeast Quarter, Section 35
Perry Township, T-19, R-19
Richland County, Ohio



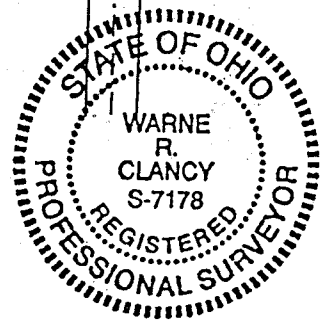
FOLLIN ROAD (T.H. 120)



APPROVED
PERRY TOWNSHIP
ZONING INSPECTOR
Bruce Lowell



Bearings are based on an assumed meridian.



Warne R. Clancy
Warne R. Clancy P.S. #7178

LEGEND

- Iron pin set with cap stamped "CLANCY 7178"
- Mag-nail set

NEW SPLIT TAX MAP APPROVED
FAK 10-13-98
INITIAL DATE

M.&A. Kissel
116.8 ac.
702/527

K. Foulks, Etal.
1.2 ac.
ORV 549/565

Northeast Corner
Northeast Quarter
Section 35

DATE: 10/2/98
JOB NO.: W093098

SURVEY DESCRIPTION

Part Northeast Quarter, Section 35
Perry Township, T-19, R-19
Richland County, Ohio

Situated in the Township of Perry, County of Richland, State of Ohio, and being a part of the Northeast Quarter of Section 35 of Township 19, Range 19, more particularly described as follows:

Commencing for the same at an iron pin found marking the northeast corner of said northeast quarter; Thence, South 00 degrees 50 minutes 23 seconds West with the east line of said quarter, the same being the centerline of Follin Road (T.H. 120), a distance of 135.00 feet to a Mag-nail set marking the southeast corner of an existing 1.2 acre parcel owned by K. Foulks, Etal. (ORV 549/565), the Place of Beginning;

Thence, continuing with said quarter and centerlines South 00 degrees 50 minutes 23 seconds West, a distance of 439.31 feet to a Mag-nail set;

Thence, North 88 degrees 11 minutes 11 seconds West, passing iron pins set for reference at 35.00 feet and 981.70 feet, a distance of 991.70 feet to a point;

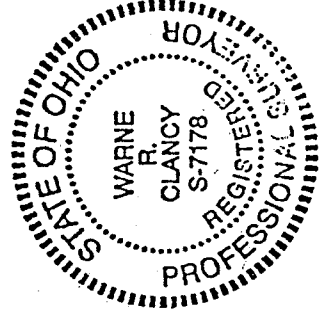
Thence, North 00 degrees 50 minutes 23 East, a distance of 439.31 feet to an iron pin set;

Thence, South 88 degrees 11 minutes 11 seconds East, passing an iron pin set for reference at 961.70 feet, a distance of 991.70 feet to the Place of Beginning, containing 10.000 acres according to survey by Warne R. Clancy, Professional Surveyor #7178, on September 30, 1998.

Iron pins set are #5 rebars with caps stamped "CLANCY 7178".

Bearings are based on an assumed meridian.

K-98



APPROVED
PERRY TOWNSHIP
ZONING INSPECTOR

Bruce Howell

Warne R. Clancy
Warne R. Clancy
Professional Surveyor #7178

NEW SPLIT
TAX MAP APPROVED
EAR INITIAL 10-13-98
DATE