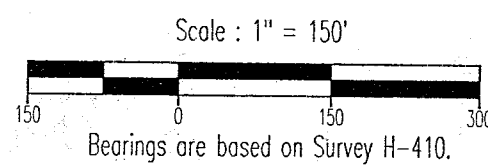
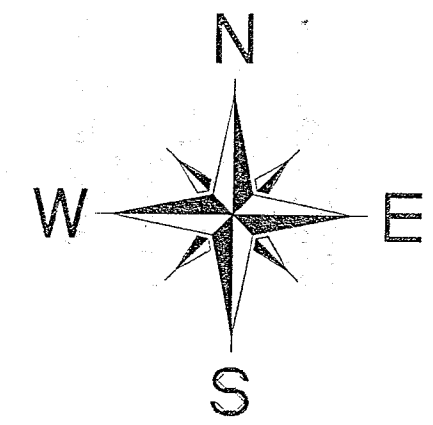
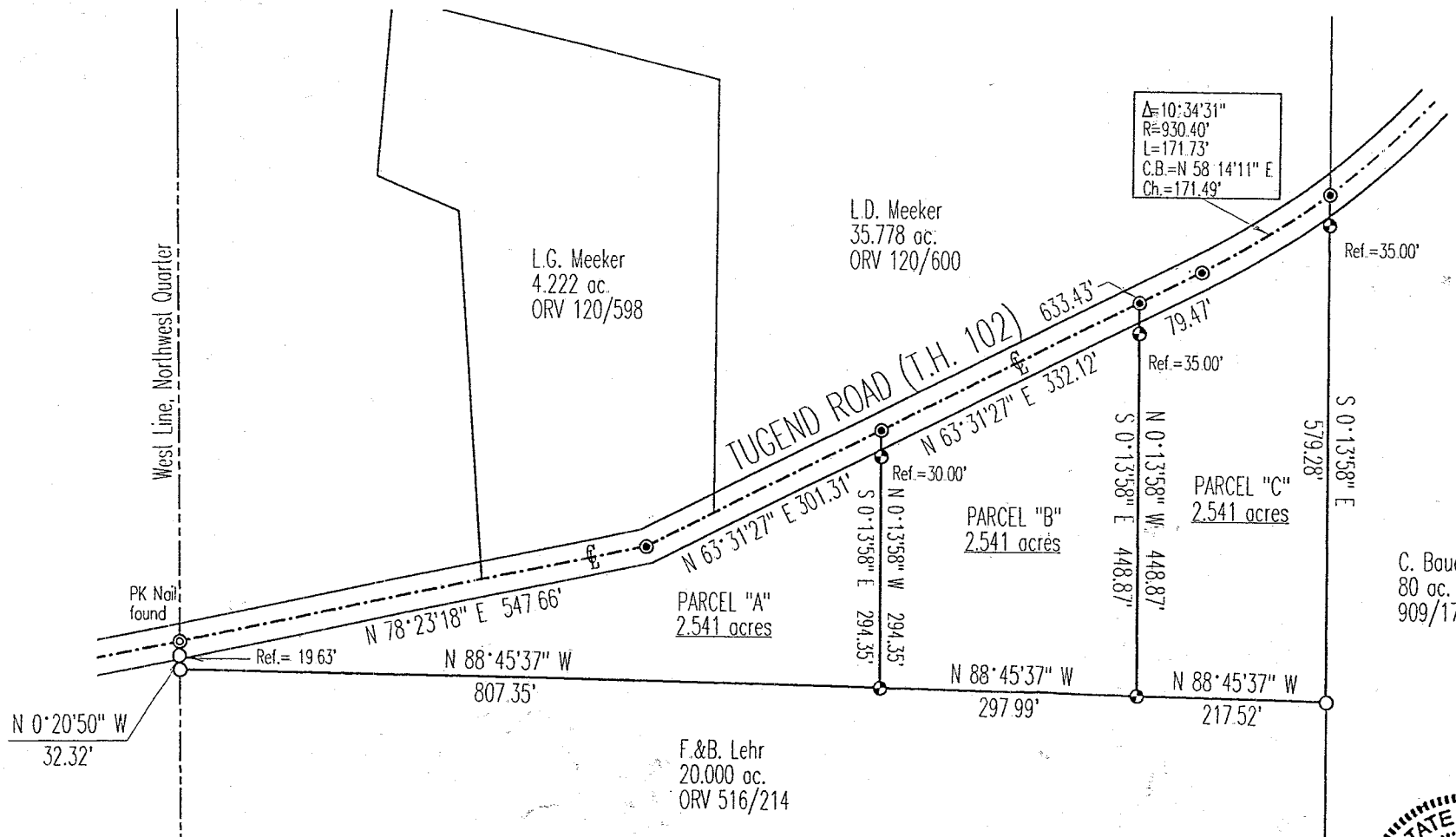


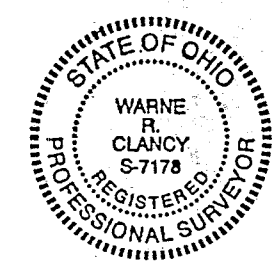
J-526

# SURVEY PLAT

For Lyle and Lester Meeker  
Part Northwest Quarter, Section 14  
Worthington Township, T-21, R-17  
Richland County, Ohio



- LEGEND**
- Iron pin set with cap stamped "CLANCY 7178"
  - Iron pin found
  - ⊙ Mag-nail set



NEW SPLIT  
TAX MAP APPROVED  
EAC 8/19/98  
INITIAL DATE

*Warne R. Clancy*  
Warne R. Clancy P.S. #7178

DATE: 8/17/98  
JOB NO.: W072498A

SURVEY DESCRIPTION

Part Northwest Quarter, Section 14  
Worthington Township, T-21, R-17  
Richland County, Ohio

Situated in the Township of Worthington, County of Richland, State of Ohio, and being a part of the Northwest Quarter of Section 14 of Township 21, Range 17, more particularly described as follows:

Commencing for the same at a PK nail found on the west line of said northwest quarter at its intersection with the centerline of Tugend Road (T.H. 102);

Thence, North 78 degrees 23 minutes 18 seconds East with said centerline, a distance of 547.66 feet to a Mag-nail set at an angle point thereon;

Thence, continuing with said centerline North 63 degrees 31 minutes 27 seconds East, a distance of 633.43 feet to a Mag-nail set, the Place of Beginning;

Thence, continuing North 63 degrees 31 minutes 27 seconds East with said centerline, a distance of 79.47 feet to a Mag-nail set at a point of curvature thereon;

Thence along a curve to the left, defined by a 10 degree 34 minute 31 second central angle, a 930.40 foot radius, and an 171.49 foot chord which bears North 58 degrees 14 minutes 11 seconds East, to a Mag-nail set at its point of intersection with the west line of an existing 80 acre parcel owned by C. Bauer (909/177).

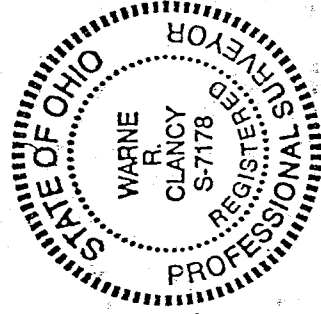
Thence, South 00 degrees 13 minutes 58 seconds East with said west line, passing an iron pin set for reference at 35.00 feet, a distance of 579.28 feet to an iron pin found marking the northeast corner of an existing 20.000 acre parcel owned by F.&B. Lehr (ORV 516/214);

Thence, North 88 degrees 45 minutes 37 seconds West with said north line, a distance of 217.52 feet to an iron pin set thereon;

Thence, North 00 degrees 13 minutes 58 seconds West, passing an iron pin set for reference at 413.87 feet, a distance of 448.87 feet to the Place of Beginning, containing 2.541 acres according to survey by Warne R. Clancy, Professional Surveyor #7178, on July 24, 1998.

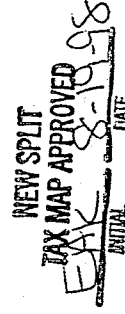
Iron pins set are #5 rebars with caps stamped "CLANCY 7178".

Bearings are based on Survey HI-410.



PARCEL "C" - 2.541 AC.

*Warne R. Clancy*  
Warne R. Clancy  
Professional Surveyor #7178



J-526

SURVEY DESCRIPTION

Part Northwest Quarter, Section 14  
Worthington Township, T-21, R-17  
Richland County, Ohio

Situated in the Township of Worthington, County of Richland, State of Ohio, and being a part of the Northwest Quarter of Section 14 of Township 21, Range 17, more particularly described as follows:

Beginning for the same at a PK nail found on the west line of said northwest quarter at its intersection with the centerline of Tugend Road (T.H. 102);

Thence, North 78 degrees 23 minutes 18 seconds East with said centerline, a distance of 547.66 feet to a Mag-nail set at an angle point thereon;

Thence, continuing with said centerline North 63 degrees 31 minutes 27 seconds East, a distance of 301.31 feet to a Mag-nail set thereon;

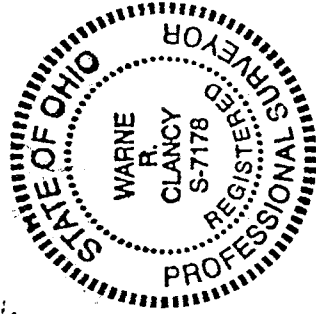
Thence, South 00 degrees 13 minutes 58 seconds East, passing an iron pin set for reference at 30.00 feet, a distance of 294.35 feet to an iron pin set on the north line of an existing 20.000 acre parcel owned by F.& B. Lehr (ORV 516/214);

Thence, North 88 degrees 45 minutes 37 seconds West with said north line, a distance of 807.35 feet to an iron pin found on the said west quarter section line;


Thence, North 00 degrees 20 minutes 50 seconds West with said west line, passing an iron pin found for reference at 12.69 feet, a distance of 32.32 feet to the Place of Beginning, containing 2.541 acres according to survey by Warne R. Clancy, Professional Surveyor #7178, on July 24, 1998.

Iron pins set are #5 rebars with caps stamped "CLANCY 7178".

Bearings are based on Survey H-410.



PARCEL "A" - 2.541 AC.

  
Warne R. Clancy  
Professional Surveyor #7178

NEW SPLIT  
TAX MAP APPROVED  
EAK 8-19-98  
INITIAL DATE

J-526

SURVEY DESCRIPTION

Part Northwest Quarter, Section 14  
Worthington Township, T-21, R-17  
Richland County, Ohio

Situated in the Township of Worthington, County of Richland, State of Ohio, and being a part of the Northwest Quarter of Section 14 of Township 21, Range 17, more particularly described as follows:

Commencing for the same at a PK nail found on the west line of said northwest quarter at its intersection with the centerline of Tugend Road (T.H. 102);

Thence, North 78 degrees 23 minutes 18 seconds East with said centerline, a distance of 547.66 feet to a Mag-nail set at an angle point thereon;

Thence, continuing with said centerline North 63 degrees 31 minutes 27 seconds East, a distance of 301.31 feet to a Mag-nail set, the Place of Beginning;

Thence, continuing North 63 degrees 31 minutes 27 seconds East with said centerline, a distance of 332.12 feet to a Mag-nail set;

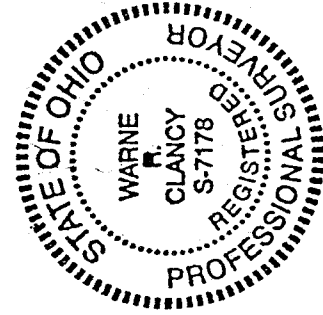
Thence, South 00 degrees 13 minutes 58 seconds East, passing an iron pin set for reference at 35.00 feet, a distance of 448.87 feet to an iron pin set on the north line of an existing 20.000 acre parcel owned by F.& B. Lehr (ORV 516/214);

Thence, North 88 degrees 45 minutes 37 seconds West with said north line, a distance of 297.99 feet to an iron pin set thereon;

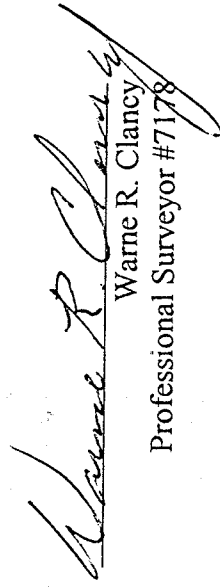
Thence, North 00 degrees 13 minutes 58 seconds West, passing an iron pin set for reference at 264.35 feet, a distance of 294.35 feet to the Place of Beginning, containing 2.541 acres according to survey by Warne R. Clancy, Professional Surveyor #7178, on July 24, 1998.

Iron pins set are #5 rebars with caps stamped "CLANCY 7178".

Bearings are based on Survey H-410.



PARCEL "B" - 2.541 AC.

  
Warne R. Clancy  
Professional Surveyor #7178

NEW SPLIT

TAX MAP APPROVED

EAJ  
INITIAL

8-19-98

J-526