

J-512

SURVEY PLAT

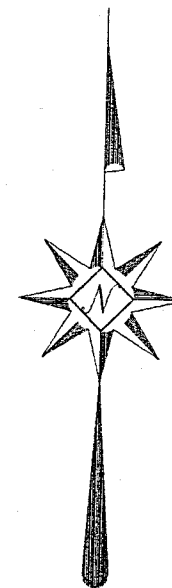
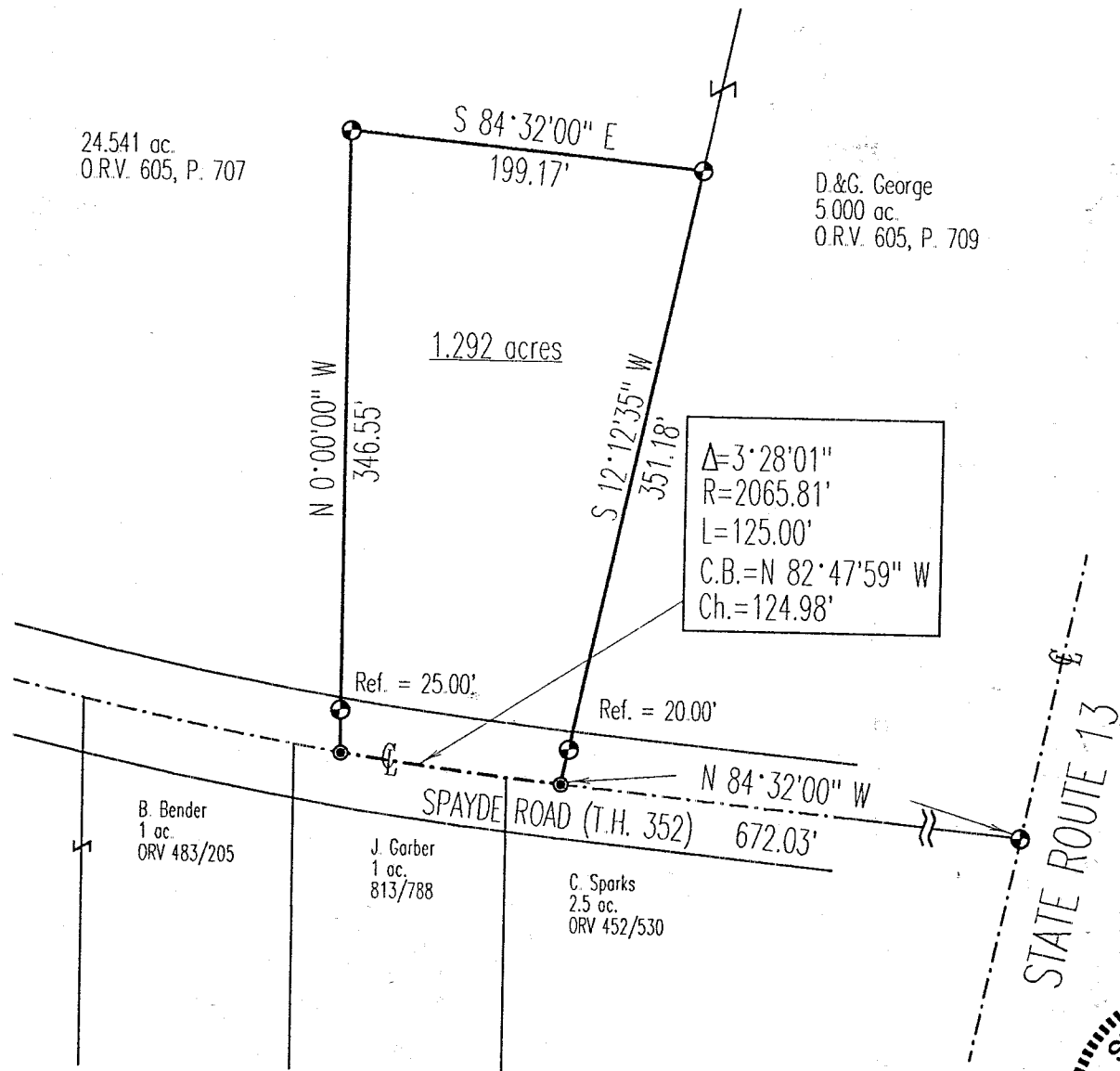
For D. & G. George
Part Northwest Quarter, Section 4
Jefferson Township, T-19, R-18
Richland County, Ohio

24.541 ac.
O.R.V. 605, P. 707

D.&G. George
5 000 ac.
O.R.V. 605, P. 709

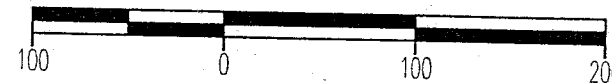
1.292 acres

$\Delta = 3^{\circ}28'01''$
 $R = 2065.81'$
 $L = 125.00'$
 $C.B. = N 82^{\circ}47'59'' W$
 $Ch. = 124.98'$

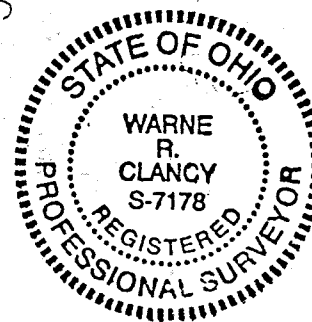


NEW SPLIT
TAX MAP APPROVED
FAK 8-12-98
INITIAL DATE

Scale : 1" = 100'



Bearings are based on O.R.V. 605, page 709.



LEGEND

- Iron pin set with cap stamped "CLANCY 7178"
- Mag-Nail set

DATE: 8/8/98
JOB NO.: W051998C

Warne R. Clancy
Warne R. Clancy P.S. #1178

SURVEY DESCRIPTION

Part Northwest Quarter, Section 4
Jefferson Township, T-19, R-18
Richland County, Ohio

Situated in the Township of Jefferson, County of Richland, State of Ohio, and being a part of the Northwest Quarter of Section 4 of Township 19, Range 18, more particularly described as follows:

Commencing for the same at an iron pin set marking the intersection of the centerline of State Route 13 with the centerline of Spayde Road (T.H. 352); Thence, North 84 degrees 32 minutes 00 seconds West with the centerline of said Spayde Road, a distance of 672.03 feet to a Mag-Nail set marking the southwest corner of an existing 5.000 acre parcel owned by D. & G. George (O.R.V. 605/ 709), the Place of Beginning;

Thence, continuing with said centerline along a curve to the right defined by a 03 degree 28 minute 01 second central angle, a 2065.81 foot radius, and a 124.98 foot chord which bears North 82 degrees 47 minutes 59 seconds West, to a Mag-Nail set thereon;

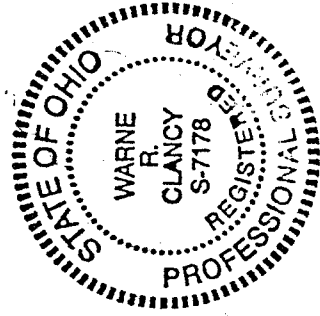
Thence, North 00 degrees 00 minutes 00 seconds West, passing an iron pin set for reference at 25.00 feet, a distance of 346.55 feet to an iron pin set;

Thence, South 84 degrees 32 minutes 00 seconds East, a distance of 199.17 feet to an iron pin set on the west line of the said 5.000 acre George parcel;

Thence, South 12 degrees 12 minutes 35 seconds West with said west line, passing an iron pin set for reference at 331.18 feet, a distance of 351.18 feet to the Place of Beginning, containing 1.292 acres according to survey by Warne R. Clancy, Professional Surveyor #7178, on August 6, 1998.

Iron pins set are #5 rebars with caps stamped "CLANCY 7178".

Bearings are based on O.R.V. 605, page 709.



Warne R. Clancy
Warne R. Clancy
Professional Surveyor #7178

NEW SPLIT
TAX MAP APPROVED
DAK 8-12-98
INITIAL DATE

J-512

J-512