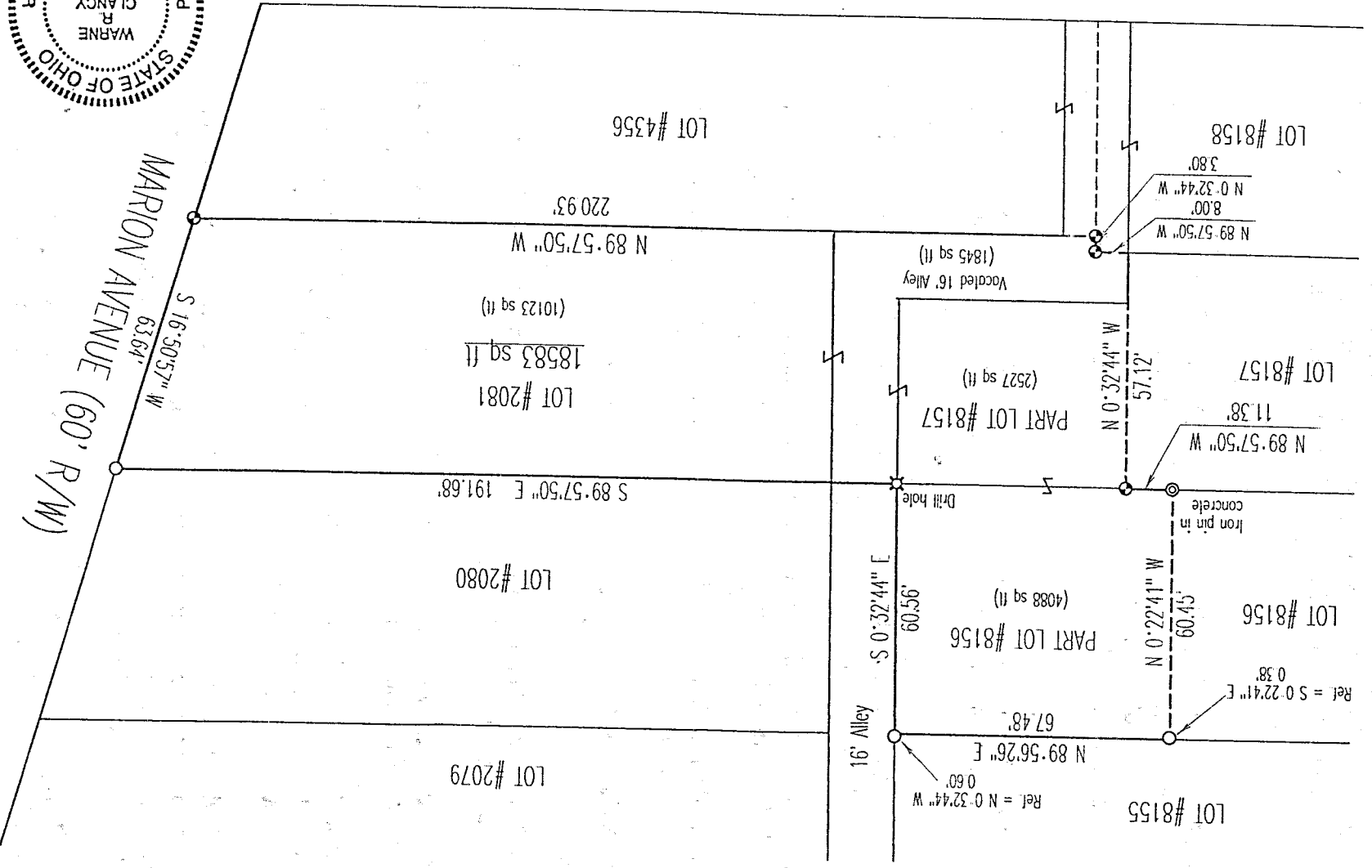


926-5

NEW SURVEY  
 OF EXISTING PARCEL  
 TAX MAP APPROVED  
 FEB 7-10-98  
 DATE

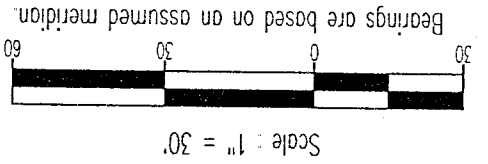


Warne R. Clancy  
 P.S. #1778



For the Estate of Linda Gullidge  
 LOT #2081 - Plat Volume 3, Page 5  
 Parts of LOTS #'s 8156 and 8157 - Plat Volume 12, Page 6  
 Part of a vacated 16' Alley - Plat Volume 6, Page 2  
 City of Mansfield  
 Richland County, Ohio

SURVEY PLAT



LEGEND

- Iron pin found
- Iron pin set with cap stamped "CLANCY 7178"

SURVEY DESCRIPTION

LOT #2081 - Plat Volume 3, Page 5  
Parts of LOTS #'s 8156 and 8157 - Plat Volume 12, Page 6  
Part of a vacated 16' Alley - Plat Volume 6, Page 2

City of Mansfield  
Richland County, Ohio

Situated in the City of Mansfield, County of Richland, State of Ohio, and being all of LOT #2081, Parts of LOTS #'s 8156 and 8157 of the consecutively numbered lots of said city as recorded in Plat Volumes 3 and 12, pages 5 and 6 respectively, and Part of a vacated 16' alley as recorded in Plat Volume 6, page 2, more particularly described as follows:

Beginning for the same at an iron pin found marking the northeast corner of said LOT #2081, the same being a point on the northwesterly right-of-way line of Marion Avenue (60' R/W);

Thence, South 16 degrees 50 minutes 57 seconds West with said right-of-way, a distance of 63.64 feet to an iron pin set marking the southeast corner of said lot;

Thence, North 89 degrees 57 minutes 50 seconds West with the south line of said lot, a distance of 220.93 feet to an iron pin set on the centerline of a vacated 16' alley;

Thence, North 00 degrees 32 minutes 44 seconds West with said centerline, a distance of 3.80 feet to an iron pin set thereon;

Thence, North 89 degrees 57 minutes 50 seconds West, a distance of 8.00 feet to a southeasterly corner of said LOT #8157;

Thence, North 00 degrees 32 minutes 44 seconds West, a distance of 57.12 feet to an iron pin set on the south line of said LOT #8156;

Thence, North 89 degrees 57 minutes 50 seconds West with said south line, a distance of 11.38 feet to an iron pin found in concrete;

Thence, North 00 degrees 22 minutes 41 seconds West, a distance of 60.45 feet to a point on the north line of said lot as referenced by an iron pin found South 00 degrees 22 minutes 41 seconds East, a distance of 0.38 feet;

Thence, North 89 degrees 56 minutes 26 seconds East with said north line, a distance of 67.48 feet to the northeast corner thereof, the same being a point on the west right-of-way of a 16' wide alley, as referenced by an iron pin found North 00 degrees 32 minutes 44 seconds West, a distance of 0.60 feet;

Thence, South 00 degrees 32 minutes 44 seconds East with said west right-of-way, a distance of 60.56 feet to a Drill hole set marking the southeast corner of said LOT #8156;

Thence, South 89 degrees 57 minutes 50 seconds East, a distance of 191.68 feet to the Place of Beginning, containing 18,583 square feet of which 10,123 lie in said LOT #2081, 4,088 in said LOT #8156, 2,527 in said LOT #8157, and 1,845 in said vacated alley according to survey by Warne R. Clancy, Professional Surveyor #7178, on July 1, 1998.

Iron pins set are #5 rebars with caps stamped "CLANCY 7178".

Bearings are based on an assumed meridian.

NEW SURVEY  
OF EXISTING PARCEL  
TAX MAP APPROVED

BAK  
INITIAL

11-10-98  
DATE

J-436