

241-1

DATE: 2/10/98  
JOB NO.: W020698

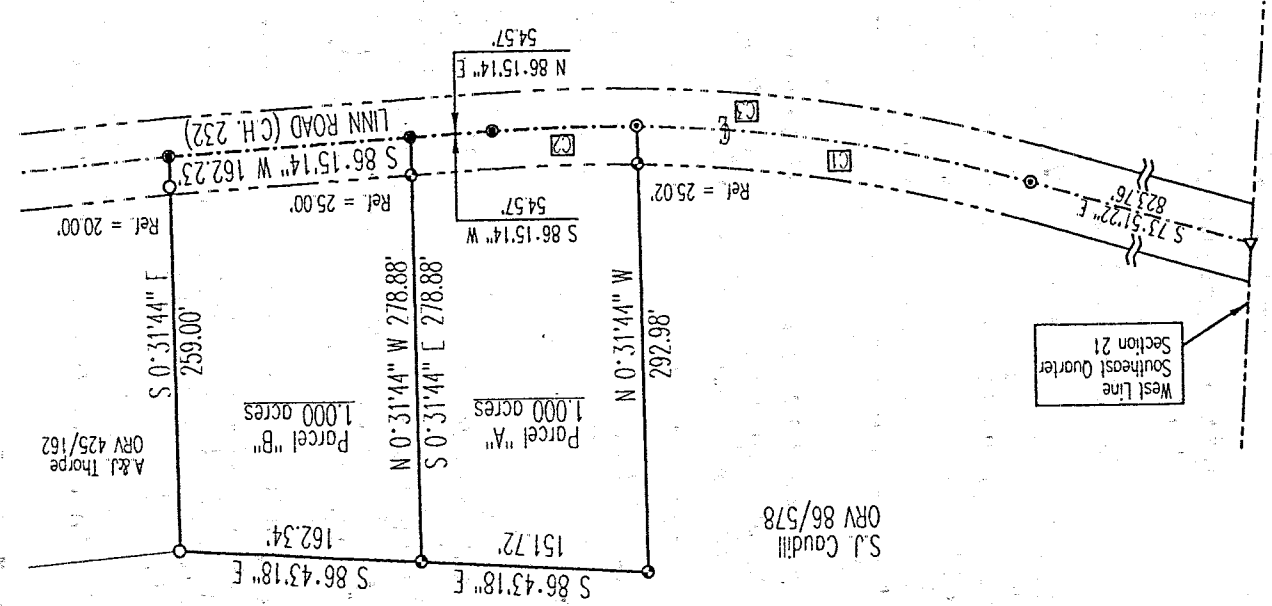
Id	Delta	Radius	Arc Length	Chord	Ch Bear
C1	14.3539°	1048.82'	267.15'	266.43'	S 81.0911° E
C2	5.1745°	1048.82'	96.94'	96.91'	S 88.5406° W
C3	19.5374°	1048.82'	364.09'	362.77'	S 83.4804° E

*Hubert Nelson  
Young & Associates  
14800 N. Township  
3/2/98*

NEW SPLIT  
TAX MAP APPROVED  
EAK 3-3-98  
INITIAL DATE

**SURVEY PLAT**  
For Steve Coudill  
Part Southeast Quarter, Section 21  
Franklin Township, T-22, R-18  
Richland County, Ohio

- LEGEND**
- Iron pin set with cap stamped "CLANCY 7178"
  - Iron pin found
  - ⊙ PK spike set
  - Mag-Nail set
  - ▼ Railroad Spike found



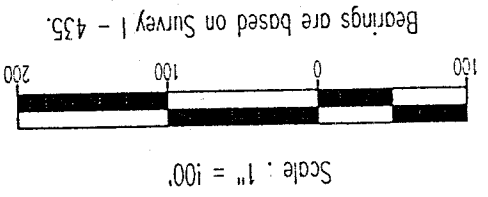
S.J. Coudill  
ORV 86/578



Warren R. Clancy

P.S. #7178

*Warren R. Clancy*



U-142

SURVEY DESCRIPTION

PART SOUTHEAST QUARTER, SECTION 21  
FRANKLIN TOWNSHIP, T-22, R-18  
RICHLAND COUNTY, OHIO

Situated in the Township of Franklin, County of Richland, State of Ohio, and being a part of the Southeast Quarter of Section 21 of Township 22, Range 18, more particularly described as follows:

Commencing for the same at a railroad spike found marking the intersection of the west line of said quarter with the centerline of Linn Road (C.H. 232); Thence, South 73 degrees 51 minutes 22 seconds East with said centerline, a distance of 823.76 feet to a PK spike set at a point of curvature thereon; Thence, continuing with said centerline along a curve to the left, defined by a 14 degree 35 minute 39 second central angle, an 1048.82 foot radius, and a 266.43 foot chord which bears South 81 degrees 09 minutes 11 seconds East, to a PK spike set, the Place of Beginning;

Thence, North 00 degrees 31 minutes 44 seconds West, passing an iron pin set for reference at 25.02 feet, a distance of 292.98 feet to an iron pin set;

Thence, South 86 degrees 43 minutes 18 seconds East, a distance of 151.72 feet to an iron pin set;

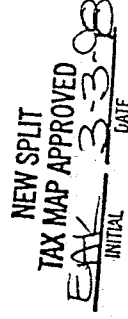
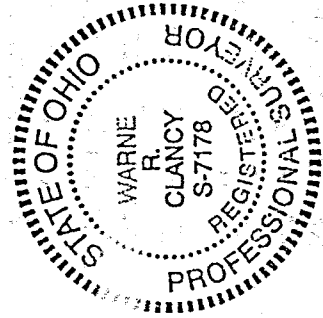
Thence, South 00 degrees 31 minutes 44 seconds East, passing an iron pin set for reference at 253.88 feet, a distance of 278.88 feet to a Mag-Nail set on the said Linn Road centerline;

Thence, South 86 degrees 15 minutes 14 seconds West with said centerline, a distance of 54.57 feet to a Mag-Nail set marking a point of curvature thereon;

Thence, continuing with said centerline along a curve to the right, defined by a 05 degree 17 minute 45 second central angle, an 1048.82 foot radius, and a 96.91 foot chord which bears South 88 degrees 54 minutes 06 seconds West, to the Place of Beginning, containing 1.000 acres according to survey by Warne R. Clancy, Professional Surveyor #7178, on February 6, 1998.

Iron pins set are #5 rebars with caps stamped "CLANCY 7178".

Bearings are based on Survey I - 435.



Parcel "A" - 1.000 acres

*Warne R. Clancy*

Warne R. Clancy  
Professional Surveyor #7178

SURVEY DESCRIPTION

PART SOUTHEAST QUARTER, SECTION 21  
FRANKLIN TOWNSHIP, T-22, R-18  
RICHLAND COUNTY, OHIO

Situated in the Township of Franklin, County of Richland, State of Ohio, and being a part of the Southeast Quarter of Section 21 of Township 22, Range 18, more particularly described as follows:

Commencing for the same at a railroad spike found marking the intersection of the west line of said quarter with the centerline of Linn Road (C.H. 232); Thence, South 73 degrees 51 minutes 22 seconds East with said centerline, a distance of 823.76 feet to a PK spike set at a point of curvature thereon; Thence, continuing with said centerline along a curve to the left, defined by a 19 degree 53 minute 24 second central angle, an 1048.82 foot radius, and a 362.27 foot chord which bears South 83 degrees 48 minutes 04 seconds East, to a Mag-Nail set at its point of tangency;

Thence, continuing with said centerline North 86 degrees 15 minutes 14 seconds East, a distance of 54.57 feet to a Mag-Nail set, the Place of Beginning;

Thence, North 00 degrees 31 minutes 44 seconds West, passing an iron pin set for reference at 25.00 feet, a distance of 278.88 feet to an iron pin set;

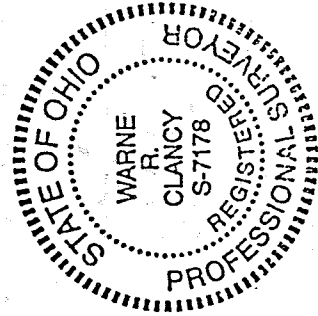
Thence, South 86 degrees 43 minutes 18 seconds East, a distance of 162.34 feet to an iron pin found marking the northwest corner of an existing parcel owned by A.&J. Thorpe (ORV 425/162);

Thence, South 00 degrees 31 minutes 44 seconds East with the west line of said Thorpe parcel, passing an iron pin found for reference at 239.00 feet, a distance of 259.00 feet to a Mag-Nail set on the said Linn Road centerline;

Thence, South 86 degrees 15 minutes 14 seconds West with said centerline, a distance of 162.23 feet to the Place of Beginning, containing 1.000 acres according to survey by Warne R. Clancy, Professional Surveyor #7178, on February 6, 1998.

Iron pins set are #5 rebars with caps stamped "CLANCY 7178".

Bearings are based on Survey I - 435.



NEW SPLIT  
TAX MAP APPROVED  
EAK 3-3-98  
INITIAL DATE

Parcel "B" - 1.000 acres

*Warne R. Clancy*  
Warne R. Clancy  
Professional Surveyor #7178

J-142