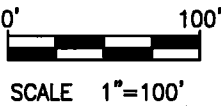


CITY OF ONTARIO

APPROVED *Yes as plat Required*
 DATE 9/13/2016

ZONING INSPECTOR

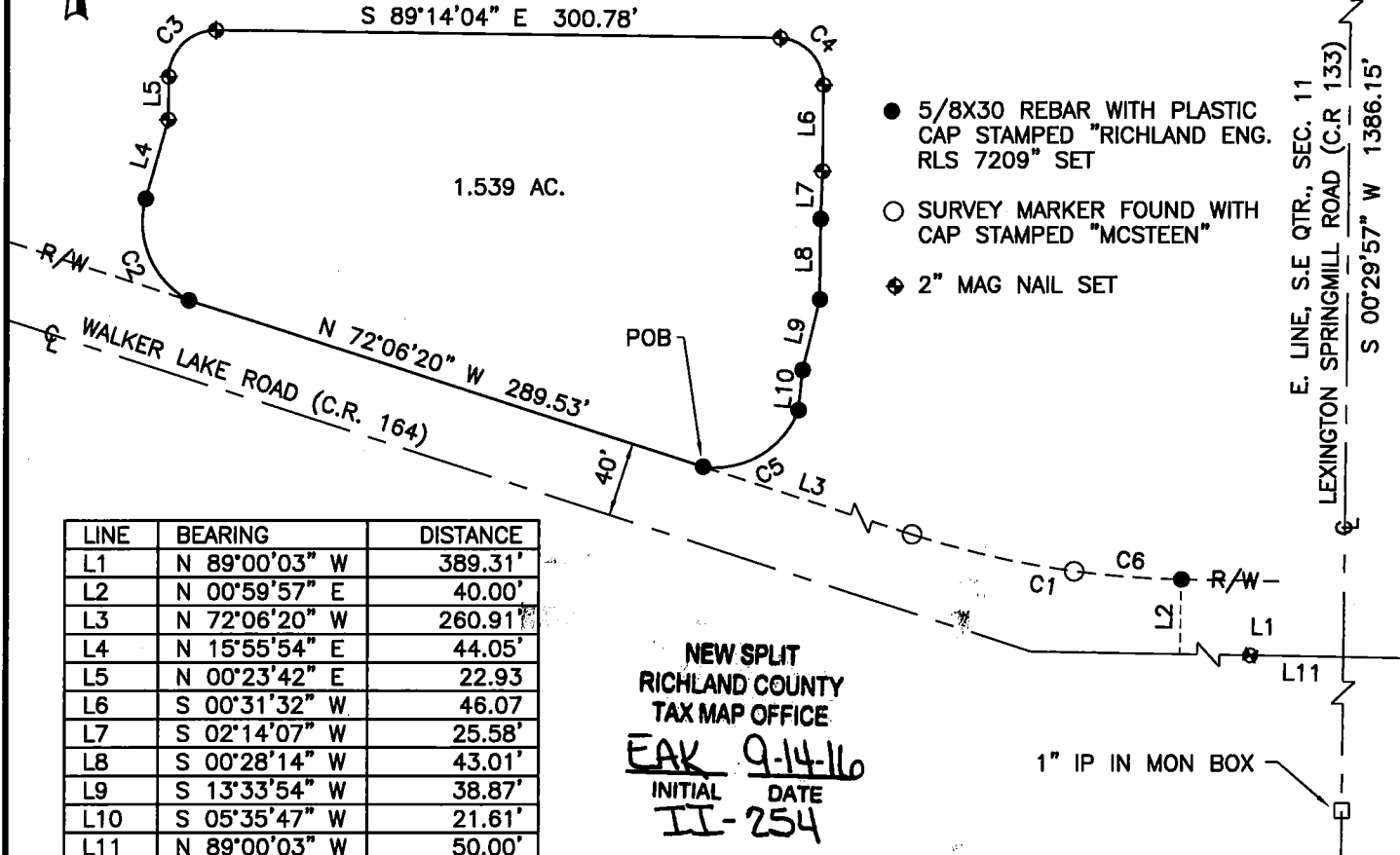
[Signature]



SCALE 1"=100'

MEIJER STORES LIMITED
 PARTNERSHIP
 O.R.V. 858, PAGE 428

1" IRON PIN IN MON
 BOX N.E. CORNER
 S.E. QTR.
 SEC. 11



- 5/8X30 REBAR WITH PLASTIC CAP STAMPED "RICHLAND ENG. RLS 7209" SET
- SURVEY MARKER FOUND WITH CAP STAMPED "MCSTEEN"
- ◆ 2" MAG NAIL SET

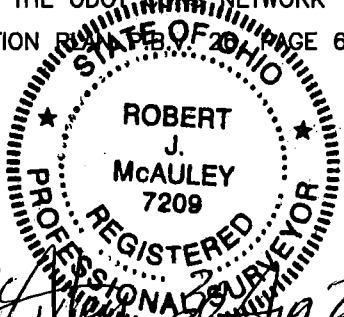
LINE	BEARING	DISTANCE
L1	N 89°00'03" W	389.31'
L2	N 00°59'57" E	40.00'
L3	N 72°06'20" W	260.91'
L4	N 15°55'54" E	44.05'
L5	N 00°23'42" E	22.93'
L6	S 00°31'32" W	46.07'
L7	S 02°14'07" W	25.58'
L8	S 00°28'14" W	43.01'
L9	S 13°33'54" W	38.87'
L10	S 05°35'47" W	21.61'
L11	N 89°00'03" W	50.00'

NEW SPLIT
 RICHLAND COUNTY
 TAX MAP OFFICE
 EAK 9-14-16
 INITIAL DATE
 II-254

CURVE	ARC LENGTH	DELTA ANGLE	RADIUS	CHORD BEARING	CHORD LENGTH
C1	147.01'	16°53'43"	498.54'	N 80°33'12" W	146.48'
C2	63.96'	77°08'40"	47.50'	N 23°16'08" W	59.23'
C3	39.43'	90°22'14"	25.00'	N 45°34'49" E	35.47'
C4	39.17'	89°45'36"	25.00'	S 44°21'16" E	35.28'
C5	64.18'	77°24'36"	47.50'	S 59°18'16" W	59.40'
C6	57.59'	6°37'08"	498.54'	N 85°41'29" W	57.56'

BEARINGS ARE BASED ON THE OHIO STATE
 PLANE COORDINATE SYSTEM, NAD83(2011) NORTH ZONE
 ORIGINATING ON THE ODOT CORS NETWORK

STREET DEDICATION R.S. PAGE 62



SURVEY
 FOR
 WXZ

SITUATED IN THE CITY OF ONTARIO, TOWNSHIP OF
 SPRINGFIELD, COUNTY OF RICHLAND AND STATE OF
 OHIO AND BEING A PART OF THE SOUTHEAST
 QUARTER OF SECTION 11, TOWNSHIP 21, RANGE 19

Robert J. McAuley
 ROBERT J. MCAULEY
 R.L.S. 7209
 DATE 9/13/2016

REL RICHLAND ENGINEERING LIMITED
 29 NORTH PARK STREET
 MANSFIELD OHIO



RICHLAND ENGINEERING LIMITED

29 North Park Street, Mansfield, Ohio 44902-1769 • 419-524-0074 FAX 419-524-1812

116025

Description of a 1.539 acre parcel for WXZ

Situated in the City of Ontario, Township of Springfield, County of Richland and State of Ohio and being a part of a 36.294 acre parcel of land now or formerly owned by Meijer Stores Limited Partnership as recorded in Official Record Volume 858, Page 428 of the Richland County Recorder's records, and being a part of the Southeast Quarter of Section 11, Township 21, Range 19 and being more particularly described as follows:

Commencing at a 1" iron pin found in a monument box at the northeast corner of the Southeast Quarter of Section 11 said point also being on the centerline of Lexington Springmill Road (C.R. 133);

Thence South 00 degrees 29 minutes 57 seconds West with the centerline of Lexington Springmill Road (C.R. 133), a distance of 1386.15 feet to a point at the intersection of Lexington Springmill Road (C.R. 133) and Walker Lake Road (C.R. 164), said point being referenced by a 2" mag nail set North 89 degrees 00 minutes 03 seconds West a distance of 50.00 feet;

Thence North 89 degrees 00 minutes 03 seconds West with the centerline of Walker Lake Road (C.R. 164), passing thru a 2" mag nail set at a distance of 50.00 feet, a total distance of 389.31 feet to a point, said point referenced by a survey marker set North 00 degrees 59 minutes 57 seconds East, 40.00 feet;

Thence North 00 degrees 59 minutes 57 seconds East a distance of 40.00 feet to a survey marker set on the north right of way line of Walker Lake Road (C.R. 164);

Thence with the north right of way line of Walker Lake Road (C.R. 164), with a curve to the right, passing thru a "McSteen" survey marker found, having a delta angle of 6 degrees 37 minutes 08 seconds, an arc length of 57.59 feet, a radius of 498.54 feet, a chord bearing North 85 degrees 41 minutes 29 seconds West, with a chord length of 57.56, the total curve having a delta angle of 16 degrees 53 minutes 43 seconds, an arc length of 147.01 feet, a radius of 498.54 feet, a chord bearing North 80 degrees 33 minutes 12 seconds West, with a chord length of 146.48 feet to a "McSteen" survey marker found;

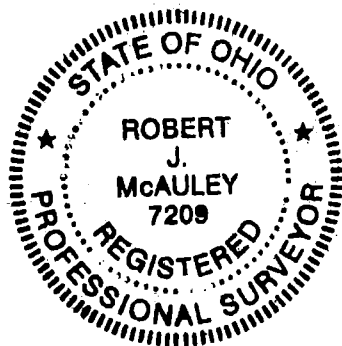
Thence North 72 degrees 06 minutes 20 seconds West with the north right of way line of Walker Lake Road (C.R. 164), a distance of 260.91 feet to a survey marker set at the **Point of Beginning** of the parcel herein described;

1. Thence **North 72 degrees 06 minutes 20 seconds West** with the north right of way line of Walker Lake Road (C.R. 164), a distance of **289.53 feet** to a survey marker set;

2. Thence with a curve to the right, having a **delta angle of 77 degrees 08 minutes 40 seconds**, an **arc length of 63.96 feet**, a **radius of 47.50 feet**, a **chord bearing North 23 degrees 16 minutes 08 seconds West**, with a **chord length of 59.23 feet** to a survey marker set;
3. Thence **North 15 degrees 55 minutes 54 seconds East** a distance of **44.05 feet** to a 2" mag nail set;
4. Thence **North 00 degrees 23 minutes 42 seconds East** a distance of **22.93 feet** to a 2" mag nail set;
5. Thence with a curve to the right, having a **delta angle of 90 degrees 22 minutes 14 seconds**, an **arc length of 39.43 feet**, a **radius of 25.00 feet**, a **chord bearing North 45 degrees 34 minutes 49 seconds East**, with a **chord length of 35.47 feet** to a 2" mag nail set;
6. Thence **South 89 degrees 14 minutes 04 seconds East** a distance of **300.78 feet** to a 2" mag nail set;
7. Thence with a curve to the right, having a **delta angle of 89 degrees 45 minutes 36 seconds**, an **arc length of 39.17 feet**, a **radius of 25.00 feet**, a **chord bearing South 44 degrees 21 minutes 16 seconds East**, with a **chord length of 35.28 feet** to a 2" mag nail set;
8. Thence **South 00 degrees 31 minutes 32 seconds West** a distance of **46.07 feet** to a 2" mag nail set;
9. Thence **South 02 degrees 14 minutes 07 seconds West** a distance of **25.58 feet** to a survey marker set;
10. Thence **South 00 degrees 28 minutes 14 seconds West** a distance of **43.01 feet** to a survey marker set;
11. Thence **South 13 degrees 33 minutes 54 seconds West** a distance of **38.87 feet** to a survey marker set;
12. Thence **South 05 degrees 35 minutes 47 seconds West** a distance of **21.61 feet** to a survey marker set;
13. Thence with a curve to the right, having a **delta angle of 77 degrees 24 minutes 36 seconds**, an **arc length of 64.18 feet**, a **radius of 47.50 feet**, a **chord bearing South 59 degrees 18 minutes 16 seconds West**, with a **chord length of 59.40 feet** to the survey marker set at the **Point of Beginning** containing **1.539 acres** of land, more or less, subject to all highways, easements and use restrictions of record.

This description is based on an actual field survey performed by Richland Engineering Limited in April 2016. Bearings are based on the Ohio State Plane Coordinate System, NAD83(2011), North Zone originating on the ODOT CORS NETWORK.

Survey markers set are 5/8"x30" rebar with plastic cap stamped "Richland Eng. RLS 7209".



Robert J. McAuley
Robert J. McAuley
RLS 7209

30 Aug 2016
Date

NEW SPLIT
RICHLAND COUNTY
TAX MAP OFFICE
EAK 9-14-16
INITIAL DATE
II-254