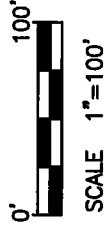


CITY OF ONTARIO

APPROVED *Yes* *NO plat required*

DATE *5/12/2016*

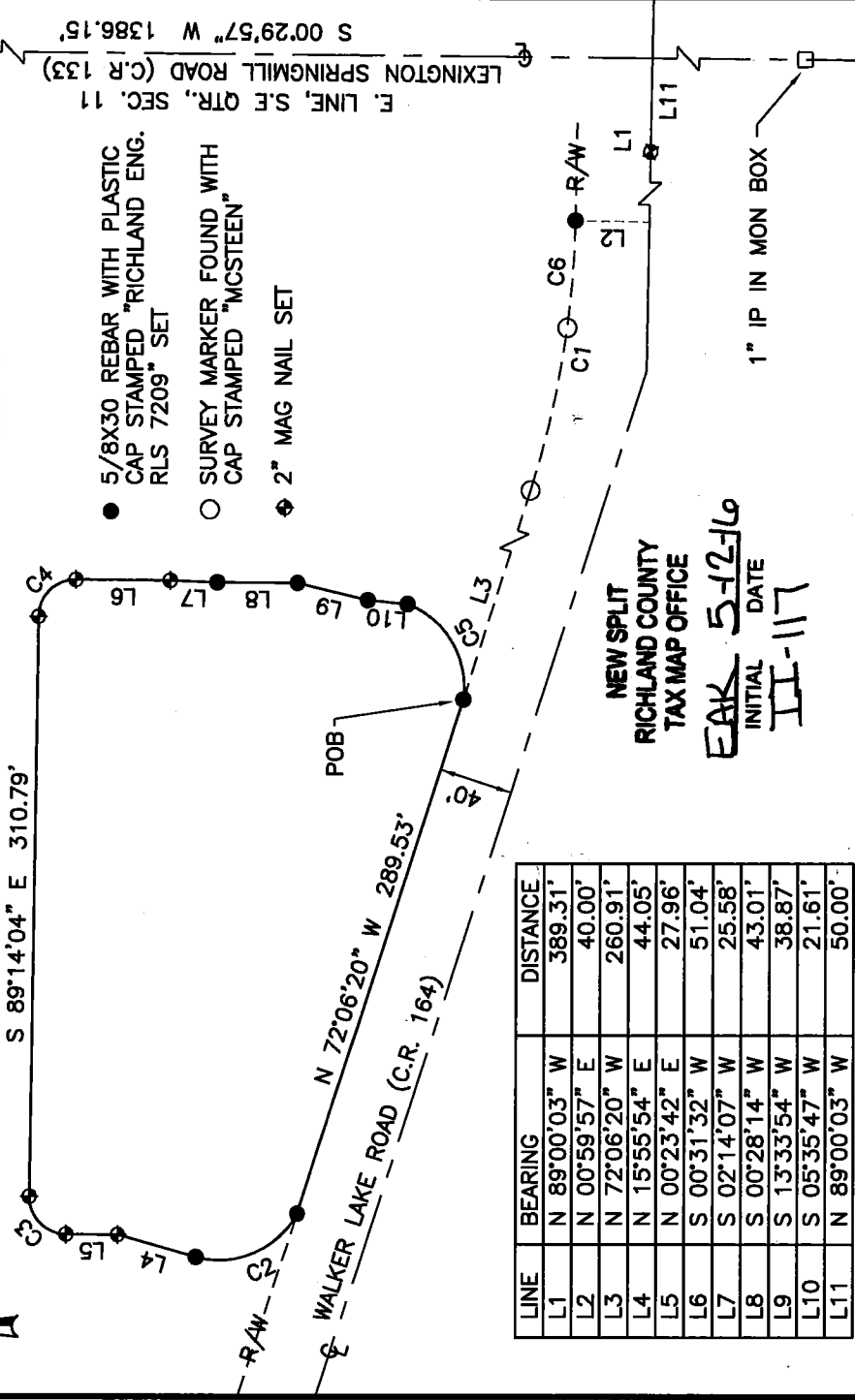
ZONING INSPECTOR



MEIJER STORES LIMITED  
PARTNERSHIP  
O.R.V. 858, PAGE 428

1" IRON PIN IN MON  
BOX N.E. CORNER  
S.E. QTR.  
SEC. 11

- 5/8X30 REBAR WITH PLASTIC CAP STAMPED "RICHLAND ENG. RLS 7209" SET
- SURVEY MARKER FOUND WITH CAP STAMPED "MCSTEEN"
- ◆ 2" MAG NAIL SET



LINE	BEARING	DISTANCE
L1	N 89°00'03" W	389.31'
L2	N 00°59'57" E	40.00'
L3	N 72°06'20" W	260.91'
L4	N 15°55'54" E	44.05'
L5	N 00°23'42" E	27.96'
L6	S 00°31'32" W	51.04'
L7	S 02°14'07" W	25.58'
L8	S 00°28'14" W	43.01'
L9	S 13°33'54" W	38.87'
L10	S 05°35'47" W	21.61'
L11	N 89°00'03" W	50.00'

CURVE	ARC LENGTH	DELTA ANGLE	RADIUS	CHORD BEARING	CHORD LENGTH
C1	147.01'	16°53'43"	498.54'	N 80°33'12" W	146.48'
C2	63.96'	77°08'40"	47.50'	N 23°16'08" W	59.23'
C3	31.55'	90°22'14"	20.00'	N 45°34'49" E	28.38'
C4	31.33'	89°45'36"	20.00'	S 44°21'16" E	28.22'
C5	64.18'	77°24'36"	47.50'	S 59°18'16" W	59.40'
C6	57.59'	6°37'08"	498.54'	N 85°41'29" W	57.56'

BEARINGS ARE BASED ON THE OHIO STATE PLANE COORDINATE SYSTEM, NAD83, ZONE ORIGINATING ON THE ODOT CORNER NETWORK.

STREET DEDICATION PLAN P.B.V. 26, PAGE 62

ROBERT J. MCAULEY  
7209



*Robert J. McAuley*  
ROBERT J. MCAULEY  
R.L.S. 7209

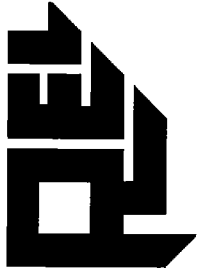
DATE

SITUATED IN THE CITY OF ONTARIO, TOWNSHIP OF SPRINGFIELD, COUNTY OF RICHLAND AND STATE OF OHIO AND BEING A PART OF THE SOUTHEAST QUARTER OF SECTION 11, TOWNSHIP 21, RANGE 19

SURVEY FOR WXZ



RICHLAND ENGINEERING LIMITED  
29 NORTH PARK STREET  
MANSFIELD OHIO



## **RICHLAND ENGINEERING LIMITED**

29 North Park Street, Mansfield, Ohio 44902-1769 • 419-524-0074 FAX 419-524-1812

116025

Description of a 1.541 acre parcel for WXX

Situated in the City of Ontario, Township of Springfield, County of Richland and State of Ohio and being a part of a 36.294 acre parcel of land now or formerly owned by Meijer Stores Limited Partnership as recorded in Official Record Volume 858, Page 428 of the Richland County Recorder's records, and being a part of the Southeast Quarter of Section 11, Township 21, Range 19 and being more particularly described as follows:

Commencing at a 1" iron pin found in a monument box at the northeast corner of the Southeast Quarter of Section 11 said point also being on the centerline of Lexington Springmill Road (C.R. 133);

Thence South 00 degrees 29 minutes 57 seconds West with the centerline of Lexington Springmill Road (C.R. 133), a distance of 1386.15 feet to a point at the intersection of Lexington Springmill Road (C.R. 133) and Walker Lake Road (C.R. 164), said point being referenced by a 2" mag nail set North 89 degrees 00 minutes 03 seconds West a distance of 50.00 feet;

Thence North 89 degrees 00 minutes 03 seconds West with the centerline of Walker Lake Road (C.R. 164), passing thru a 2" mag nail set at a distance of 50.00 feet, a total distance of 389.31 feet to a point, said point referenced by a survey marker set North 00 degrees 59 minutes 57 seconds East, 40.00 feet;

Thence North 00 degrees 59 minutes 57 seconds East a distance of 40.00 feet to a survey marker set on the north right of way line of Walker Lake Road (C.R. 164);

Thence with the north right of way line of Walker Lake Road (C.R. 164), with a curve to the right, passing thru a "McSteen" survey marker found, having a delta angle of 6 degrees 37 minutes 08 seconds, an arc length of 57.59 feet, a radius of 498.54 feet, a chord bearing North 85 degrees 41 minutes 29 seconds West, with a chord length of 57.56, the total curve having a delta angle of 16 degrees 53 minutes 43 seconds, an arc length of 147.01 feet, a radius of 498.54 feet, a chord bearing North 80 degrees 33 minutes 12 seconds West, with a chord length of 146.48 feet to a "McSteen" survey marker found;

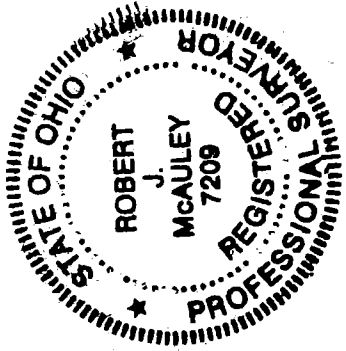
Thence North 72 degrees 06 minutes 20 seconds West with the north right of way line of Walker Lake Road (C.R. 164), a distance of 260.91 feet to a survey marker set at the **Point of Beginning** of the parcel herein described;

1. Thence **North 72 degrees 06 minutes 20 seconds West** with the north right of way line of Walker Lake Road (C.R. 164), a distance of **289.53 feet** to a survey marker set;

2. Thence with a curve to the right, having a delta angle of 77 degrees 08 minutes 40 seconds, an arc length of 63.96 feet, a radius of 47.50 feet, a chord bearing North 23 degrees 16 minutes 08 seconds West, with a chord length of 59.23 feet to a survey marker set;
3. Thence North 15 degrees 55 minutes 54 seconds East a distance of 44.05 feet to a 2" mag nail set;
4. Thence North 00 degrees 23 minutes 42 seconds East a distance of 27.96 feet to a 2" mag nail set;
5. Thence with a curve to the right, having a delta angle of 90 degrees 22 minutes 14 seconds, an arc length of 31.55 feet, a radius of 20.00 feet, a chord bearing North 45 degrees 34 minutes 49 seconds East, with a chord length of 28.38 feet to a 2" mag nail set;
6. Thence South 89 degrees 14 minutes 04 seconds East a distance of 310.79 feet to a 2" mag nail set;
7. Thence with a curve to the right, having a delta angle of 89 degrees 45 minutes 36 seconds, an arc length of 31.33 feet, a radius of 20.00 feet, a chord bearing South 44 degrees 21 minutes 16 seconds East, with a chord length of 28.22 feet to a 2" mag nail set;
8. Thence South 00 degrees 31 minutes 32 seconds West a distance of 51.04 feet to a 2" mag nail set;
9. Thence South 02 degrees 14 minutes 07 seconds West a distance of 25.58 feet to a survey marker set;
10. Thence South 00 degrees 28 minutes 14 seconds West a distance of 43.01 feet to a survey marker set;
11. Thence South 13 degrees 33 minutes 54 seconds West a distance of 38.87 feet to a survey marker set;
12. Thence South 05 degrees 35 minutes 47 seconds West a distance of 21.61 feet to a survey marker set;
13. Thence with a curve to the right, having a delta angle of 77 degrees 24 minutes 36 seconds, an arc length of 64.18 feet, a radius of 47.50 feet, a chord bearing South 59 degrees 18 minutes 16 seconds West, with a chord length of 59.40 feet to the survey marker set at the Point of Beginning containing 1.541 acres of land, more or less, subject to all highways, easements and use restrictions of record.

This description is based on an actual field survey performed by Richland Engineering Limited in April 2016. Bearings are based on the Ohio State Plane Coordinate System, NAD83(2011), North Zone originating on the ODOT CORS NETWORK.

Survey markers set are 5/8" x 30" rebar with plastic cap stamped "Richland Eng. RLS 7209".



*Robert J. McAuley*  
Robert J. McAuley  
RLS 7209

*12 May 2016*  
Date

NEW SPLIT  
RICHLAND COUNTY  
TAX MAP OFFICE  
EAK 5-12-16  
INITIAL DATE  
II-117