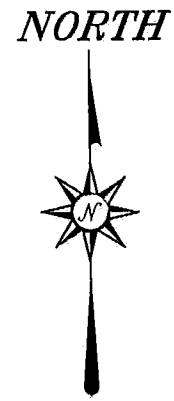
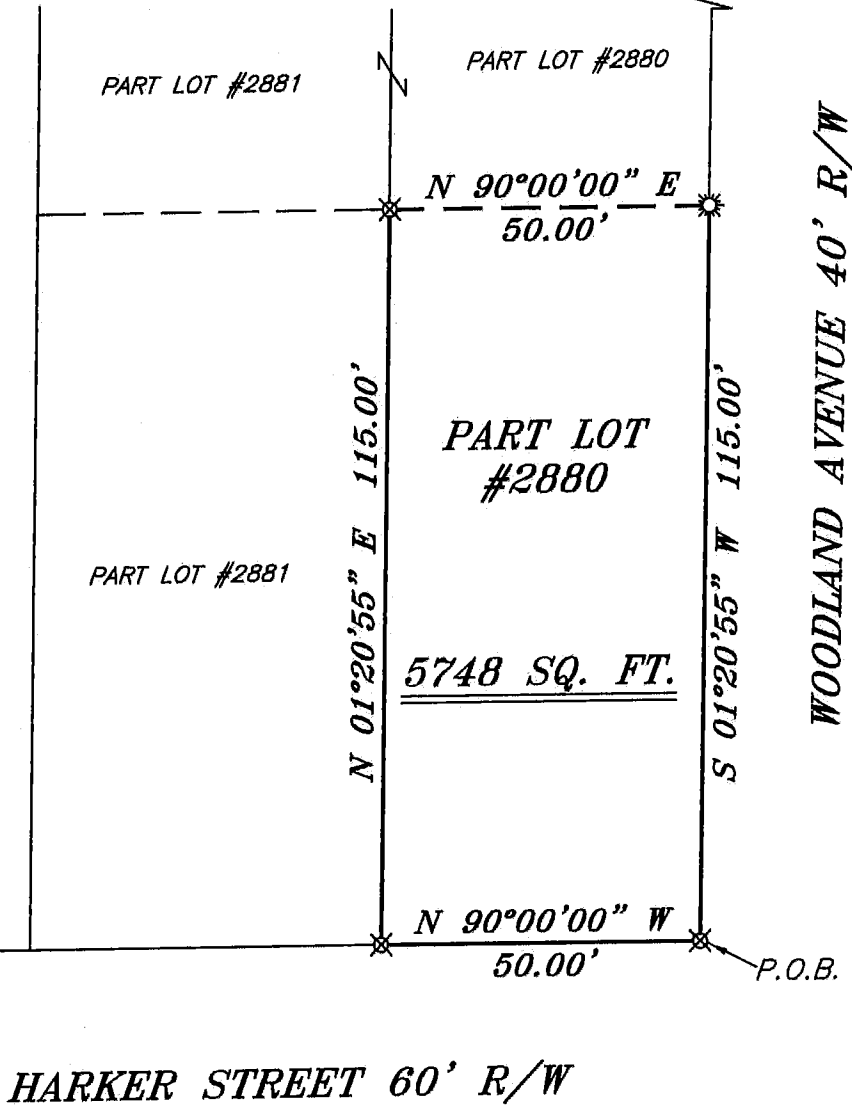


NEW SURVEY
OF EXISTING PARCEL
RICHLAND COUNTY
TAX MAP OFFICE

FAK 12-4-16
INITIAL DATE
II-27



PART LOT #1833 SD. 1
PART LOT #1833 SD. 2
PART LOT #1833 SD. 3



BEARINGS ARE BASED ON SURVEY DD-306
ON FILE AT THE RICHLAND COUNTY TAX
MAP OFFICE AND ARE INTENDED TO BE
USED FOR ANGULAR DETERMINATION ONLY

LEGEND

- IRON PIN FOUND
- ☼ DRILL HOLE SET IN CONCRETE WALL
- ⊗ 3" SURVEY MARKER SET
- △ RAILROAD SPIKE SET
- ▲ RAILROAD SPIKE FOUND
- ⊗ 5/8" IRON PIN SET WITH CAP STAMPED "CRAIG 8195"

SURVEY PLAT FOR	
PROPERTY TRANSFER	
PART LOT #2880	
CITY OF MANSFIELD	
RICHLAND COUNTY, OHIO	
DATE: JANUARY 26, 2016	SCALE: 1"=30'
HARKER_ST_300	

Chad F. Craig
SURVEY BY: CHAD F. CRAIG P.S. #8195
for SEILER & CRAIG SURVEYING INC.
270 PARK AVENUE WEST
MANSFIELD, OHIO 44902
(419) 525-3644
EMAIL: SEILERANDCRAIG@SEILERANDCRAIG.COM

SEILER & CRAIG SURVEYING, INC.

Chad F. Craig, PS
270 Park Avenue West
Mansfield, Ohio 44902
419-525-3644
Email: seilerandcraig@seilerandcraig.com
www.seilerandcraig.com

SURVEY DESCRIPTION

PART LOT #2880
CITY OF MANSFIELD
RICHLAND COUNTY, OHIO

Situated in the City of Mansfield, County of Richland, State of Ohio and being known as part Lot #2880 of the consecutively numbered lots in said city, and being more particularly described as follows:

Beginning for the same at an iron pin set marking the southeast corner of said lot; Thence, North 90 degrees 00 minutes 00 seconds West with the south line of said lot, 50.00 feet to an iron pin set on the southwest corner thereof;

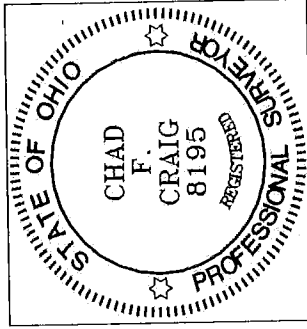
Thence, North 01 degree 20 minutes 55 seconds East with the west line of said lot, 115.00 feet to an iron pin set;

Thence, North 90 degrees 00 minutes 00 seconds East 50.00 feet to a drill hole set in a concrete wall on the east line of said lot;

Thence, South 01 degree 20 minutes 55 seconds West with said east line, 115.00 feet to the place of beginning, containing 5748 square feet according to survey by Chad F. Craig P.S. 8195 on January 26, 2016 but subject to all legal highways and easements of record.

Iron pins set are 5/8" rods with caps stamped "CRAIG 8195".

Bearings are based on Survey DD-306 on file at the Richland County Tax Map Office and are intended to be used for angular determination only.



NEW SURVEY
OF EXISTING PARCEL
RICHLAND COUNTY
TAX MAP OFFICE

EAK INITIAL
2-4-16 DATE
II-27

A handwritten signature in black ink that reads "Chad F. Craig".

Chad F. Craig P.S. #8195
Seiler and Craig Surveying, Inc.