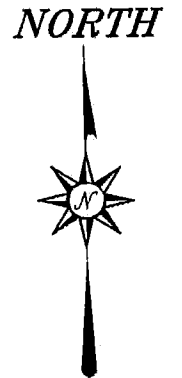
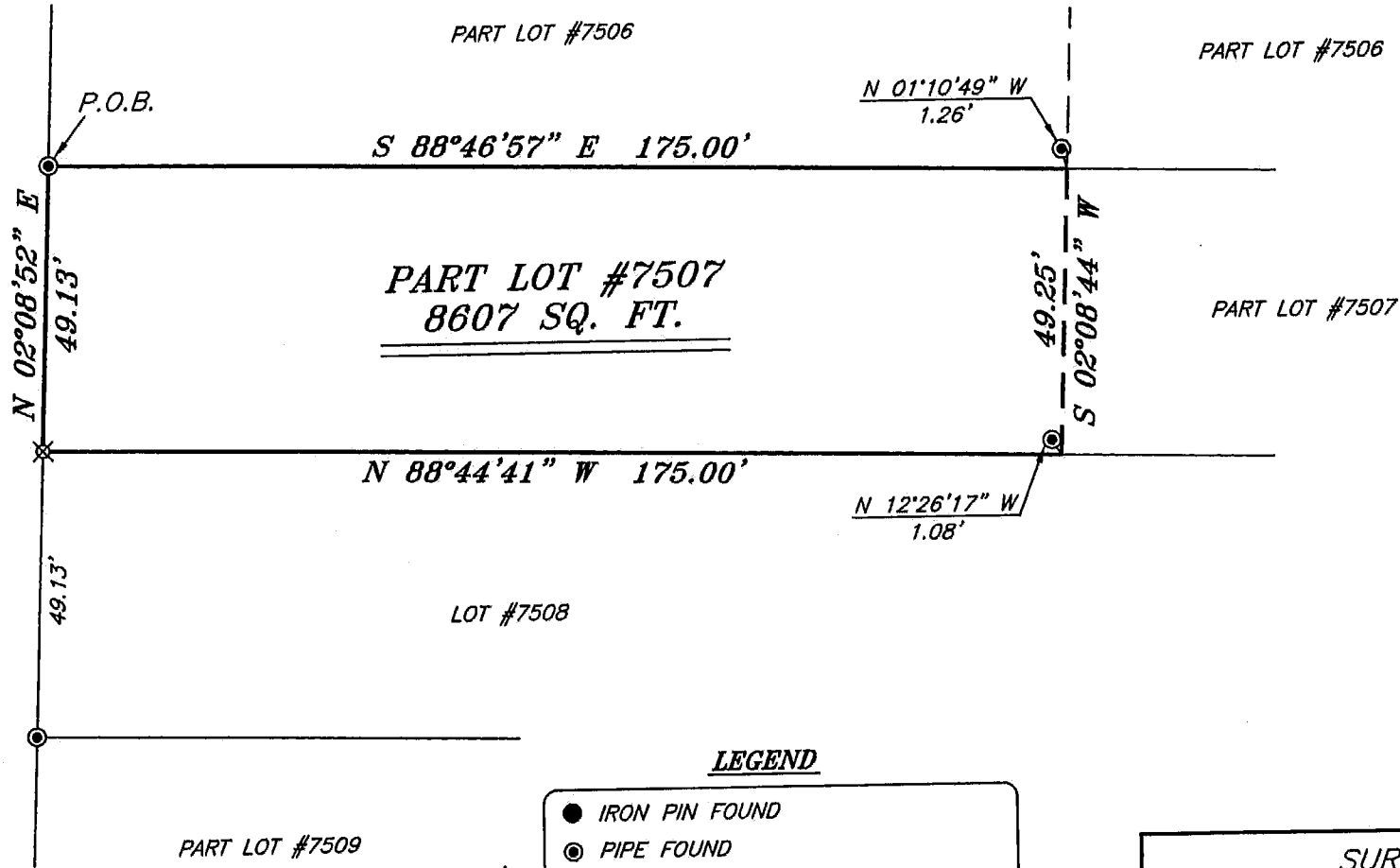


BEARINGS ARE BASED ON SURVEY Z-106  
ON FILE AT THE RICHLAND COUNTY TAX  
MAP OFFICE AND ARE INTENDED TO BE  
USED FOR ANGULAR DETERMINATION ONLY



LUTHER STREET 60' R/W



*Chad F. Craig*

SURVEY BY: CHAD F. CRAIG P.S. #8195  
for SEILER & CRAIG SURVEYING INC.  
270 PARK AVENUE WEST  
MANSFIELD, OHIO 44902  
(419) 525-3644  
EMAIL: SEILERANDCRAIG@SEILERANDCRAIG.COM

PART LOT #7509

NEW SURVEY  
OF EXISTING PARCEL  
RICHLAND COUNTY  
TAX MAP OFFICE

EAK 2-4-16

INITIAL DATE

II-23

**LEGEND**

- IRON PIN FOUND
- ⊙ PIPE FOUND
- ⊗ 3" SURVEY MARKER SET
- △ RAILROAD SPIKE SET
- ▲ RAILROAD SPIKE FOUND
- ⊗ 5/8" IRON PIN SET WITH CAP STAMPED "CRAIG 8195"

SURVEY PLAT FOR	
PROPERTY TRANSFER	
PART LOT #7507	
CITY OF MANSFIELD	
RICHLAND COUNTY, OHIO	
DATE: JANUARY 26, 2016	SCALE: 1"=30'
LUTHER_ST_495	

**SEILER & CRAIG SURVEYING, INC.**

Chad F. Craig, P.S.  
270 Park Avenue West  
Mansfield, Ohio 44902  
419-525-3644

Email: [seilerandcraig@seilerandcraig.com](mailto:seilerandcraig@seilerandcraig.com)  
[www.seilerandcraig.com](http://www.seilerandcraig.com)

**SURVEY DESCRIPTION**

PART LOT #7507  
CITY OF MANSFIELD  
RICHLAND COUNTY, OHIO

Situated in the City of Mansfield, County of Richland, State of Ohio and being known as part Lot #7507 of the consecutively numbered lots in said city, and being more particularly described as follows:

Beginning for the same at an iron pipe found and accepted as marking the northwest corner of Lot #7507; Thence, South 88 degrees 46 minutes 57 seconds East with the north line of said lot, 175.00 to a point referenced by an iron pipe found on a bearing of North 01 degree 10 minutes 49 seconds West and at a distance of 1.26 feet;

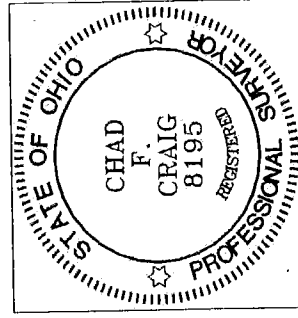
Thence, South 02 degrees 08 minutes 44 seconds West 49.25 feet to a point on the south line of said lot and referenced by an iron pipe found on a bearing of North 12 degrees 26 minutes 17 seconds West and at a distance of 1.08 feet;

Thence, North 88 degrees 44 minutes 41 seconds West with said south line, 175.00 feet to an iron pin set on the southeast corner thereof;

Thence, North 02 degrees 08 minutes 52 seconds East with the west line of said lot, 49.13 feet to the place of beginning, containing 8607 square feet according to survey by Chad F. Craig P.S. 8195 on January 26, 2016 but subject to all legal highways and easements of record.

Iron pins set are 5/8" rods with caps stamped "CRAIG 8195".

Bearings are based on Survey Z-106 on file at the Richland County Tax Map Office and are intended to be used for angular determination only.



NEW SURVEY  
OF EXISTING PARCEL  
RICHLAND COUNTY  
TAX MAP OFFICE

~~EAV~~ INITIAL 2-4-16 DATE

III-23

Chad F. Craig P.S. #8195  
Seiler and Craig Surveying, Inc.